

IGP-3 Series Internal Gear Pump

IGP-3 Series Internal Gear Pump

IGP-3 performance curves



Measuring working condition 1450
 Revolution speed n=1500r/min
 Viscosity v=46cSt
 Oil temperature t=40°C

IGP-3 (32)
 IGP-3 (40)
 IGP-3 (50)
 IGP-3 (64)

Technical parameter

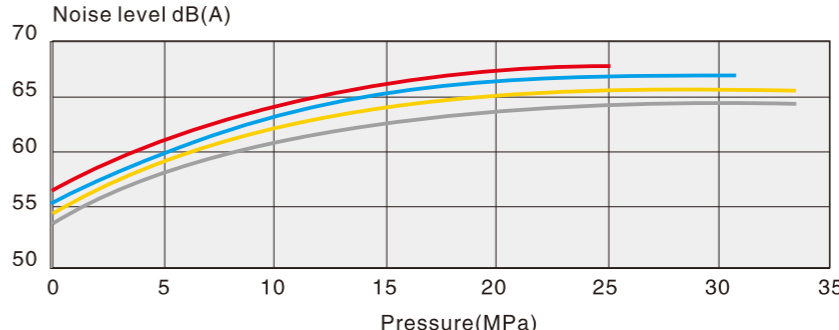
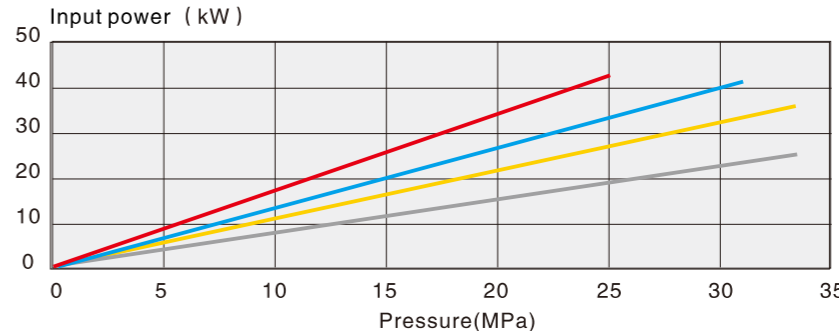
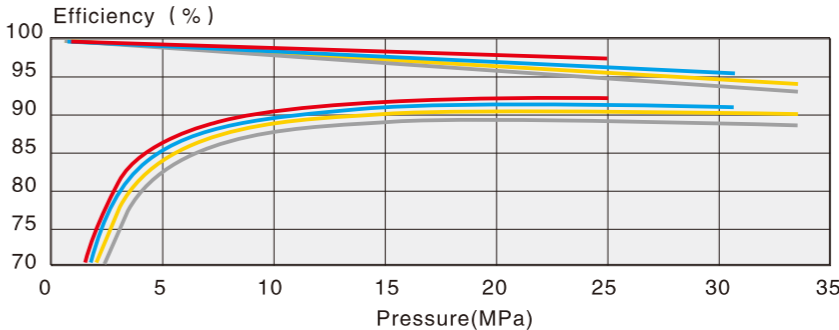
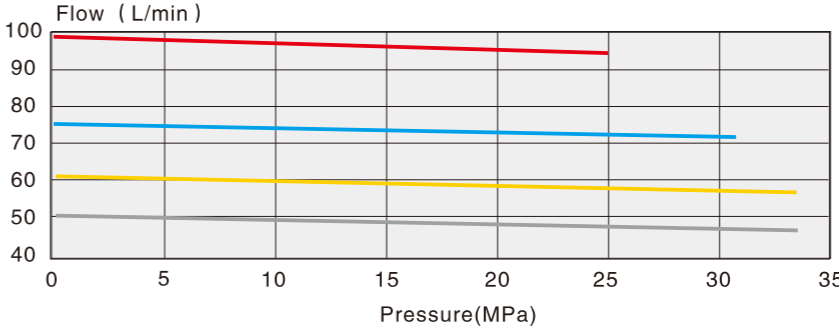
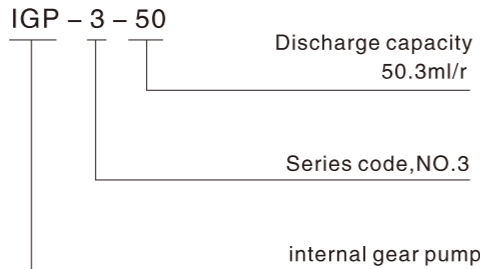
Series-type	Discharge capacity (ml/r)	Revolution speed (r/min)		Continuous working pressure (MPa)	η_{Max} Max surge press (MPa)
		min ³⁾	max		
IGP-3-32	33.1	400	3000	31.5	33
IGP-3-40	41.0	400	2800	31.5	33
IGP-3-50	50.3	400	2500	25	28
IGP-3-64	64.9	400	2200	25	28

This parameter is indicated on the condition that mineral oil viscosity is 20-40cst and pump suction oil pressure is 0.8bar(minimum)and 3bar(maximum).

The parameter shown in the table is listed according to the discharge capacity unit as cubic centimeter/r in order.

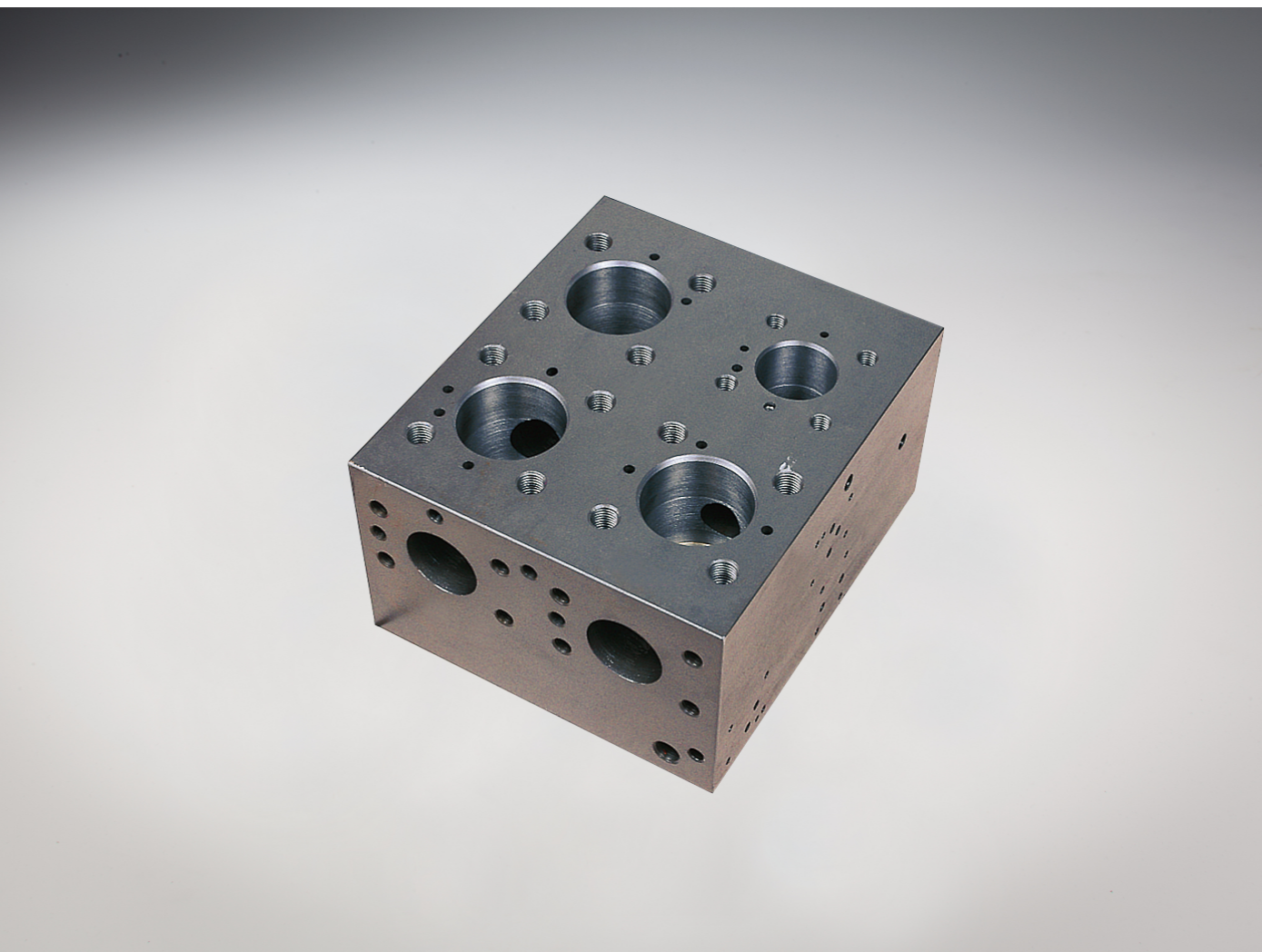
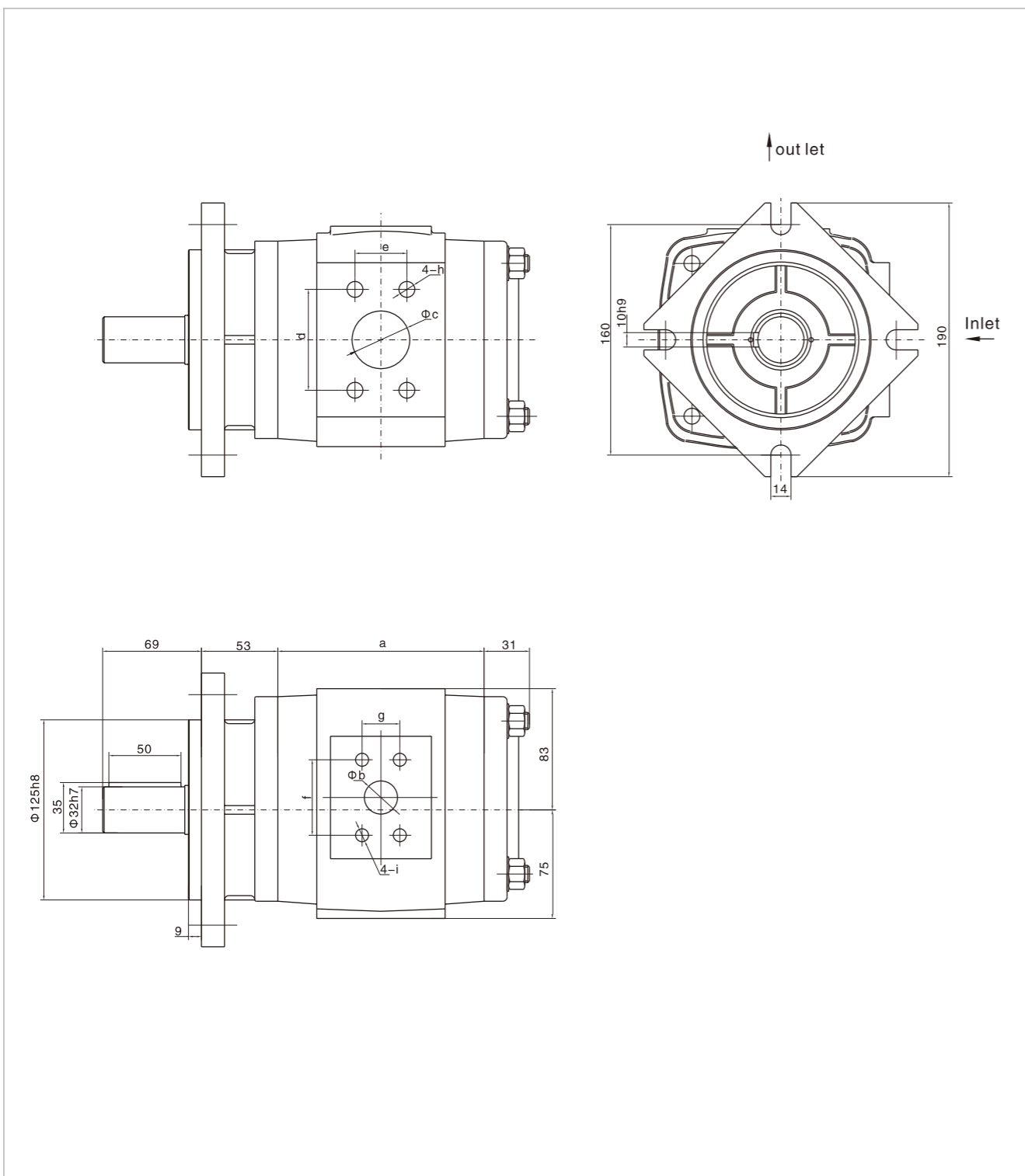
Notice: so-called allowed surge pressure is indicated that within one minute as working cycle, of which 15% is the allowed pressure peak. Because of manufacturing error, the actual discharge capacity of the pump may be lower than that of ideal valve about 1.5%. When revolution speed is lower than 400r/min or between 1500r/min and n Max, please contact us, so as to ensure surge pressure.

Model instruction



IGP-3 Series Internal Gear Pump

External dimensions



Manifolds

Series-type	a	ϕb	ϕc	d	e	f	g	h	i	kg
IGP-3-32	119	18	32	58.7	30.2	47.5	22	M10X15	M10X15	17.5
IGP-3-40	125	19	35	70	36	52.4	26.2	M12X20	M10X15	18.3
IGP-3-50	132	21	40	70	36	52.4	26.2	M12X20	M10X15	19.4
IGP-3-64	143	23	40	70	36	52.4	26.2	M12X20	M10X15	20.7