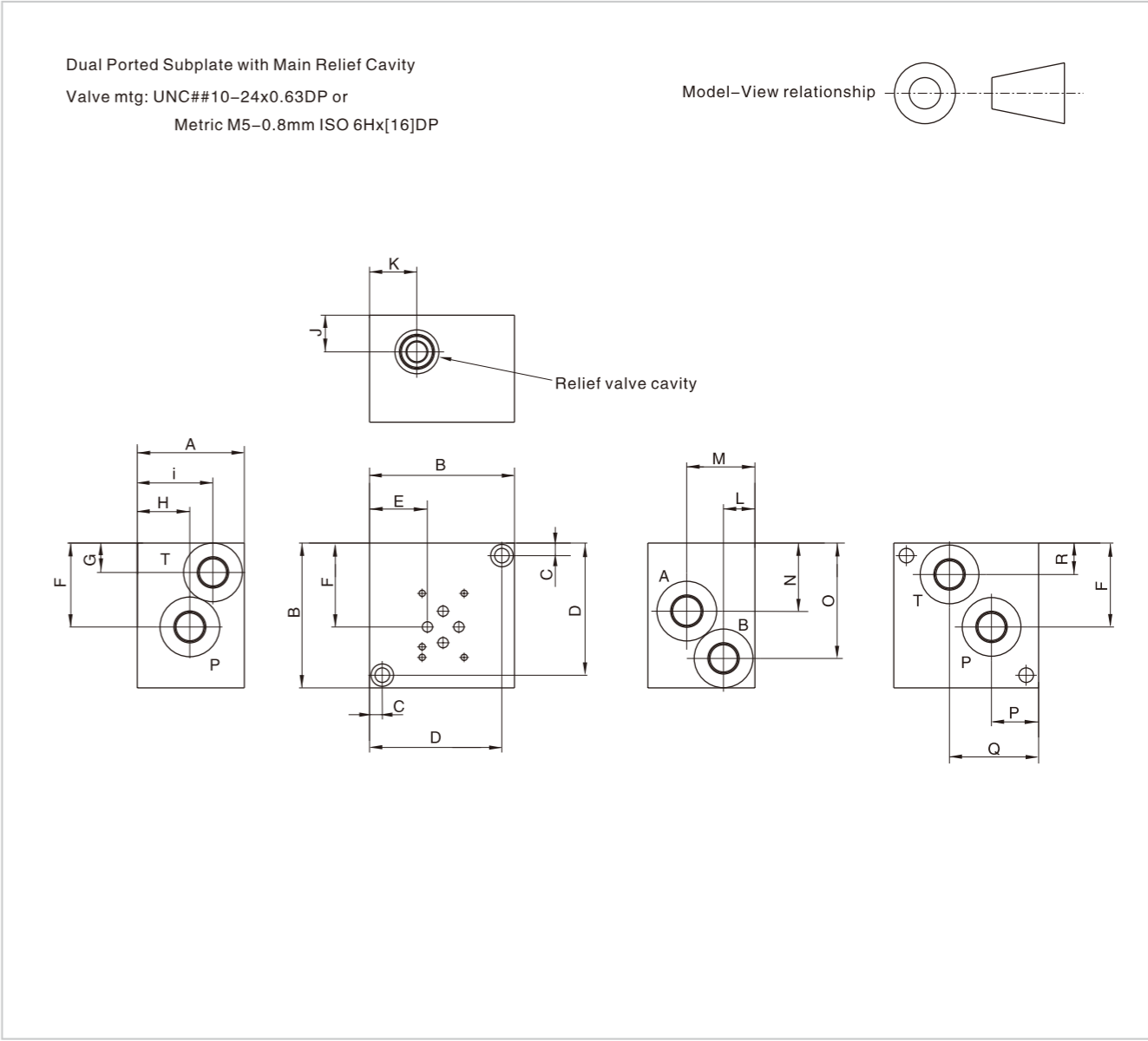
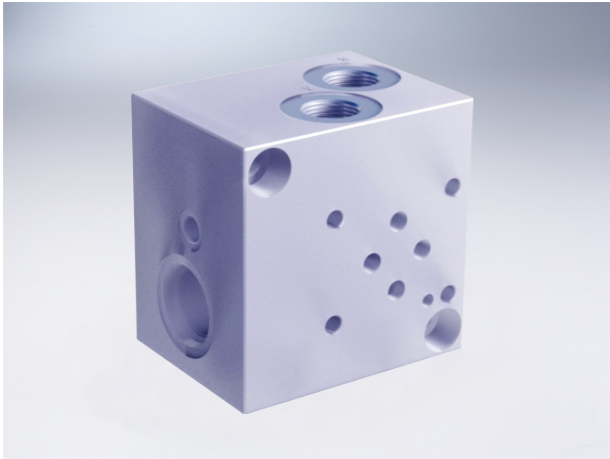


D03 Subplates With Relief Cavity

D03 Subplates With Relief Cavity

External dimensions



Ordering information

HY* D03 SP * * * / 10

A Aluminum 7A04 max. working pressure 20.7Mpa
 D Ductile Iron 45# max. working pressure 31.5Mpa

Serial number

Valve Pattern 03 NG 6

Port Threads					
6P	3/8"NPT(Z)	8P	1/2"NPT(Z)	12P	3/4"NPT(Z)
6S	SAE-6	8S	SAE-8	12S	SAE-12
6B	3/8"BSP(G)	8B	1/2"BSP(G)	12B	3/4"BSP(G)
6M	M14X1.5	8M	M18X1.5	12M	M27X2

Relief Cavity	
C	Common cavity: C-10-2 (P in nose)
S	Sun cavity: T-10A (P in nose)

Subplate

RV Main Relief P to T

Dimension	A	B	C	D	E	F	G	H	I
*D03SPRV*6*	2.25 [57.2]	3.00 [76.2]	0.31 [7.9]	2.69 [68.3]	0.97 [24.6]	2.00 [50.8]	0.69 [17.5]	1.66 [42.1]	1.66 [42.1]
*D03SPRV*8*	3.00 [76.2]	3.50 [88.9]	0.38 [9.5]	3.12 [79.4]	1.34 [34.1]	2.19 [55.6]	0.81 [20.6]	1.50 [38.1]	2.00 [50.8]
*D03SPRV*12*	3.00 [76.2]	4.00 [101.6]	0.38 [9.5]	3.63 [92.1]	1.59 [40.5]	2.38 [60.3]	0.84 [21.4]	1.50 [38.1]	2.13 [54.0]

Dimension	J	K	L	M	N	O	P	Q	R
*D03SPRV*6*	0.88 [22.4]	0.84 [21.3]	0.88 [22.4]	1.63 [41.3]	1.53 [38.9]	2.37 [60.2]	0.97 [24.6]	1.69 [42.9]	0.69 [17.5]
*D03SPRV*8*	1.00 [25.4]	1.09 [22.8]	0.84 [21.4]	1.91 [48.4]	1.72 [43.6]	2.53 [64.3]	1.09 [22.8]	2.25 [57.2]	0.81 [20.6]
*D03SPRV*12*	1.00 [25.4]	1.34 [34.1]	0.84 [21.4]	1.91 [48.4]	1.91 [48.4]	3.19 [81.0]	1.34 [34.1]	2.50 [63.5]	0.88 [22.2]