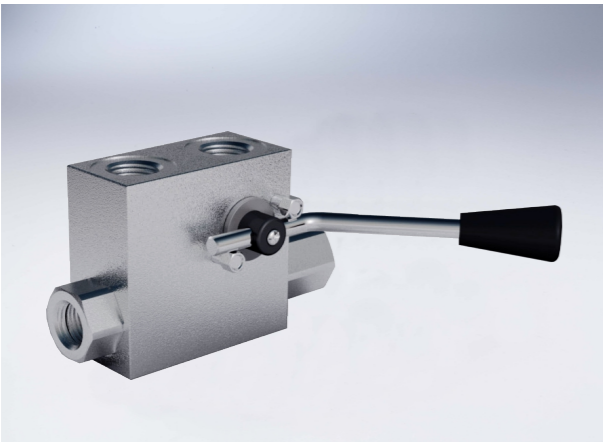


Single Pilot Operated Check Valves With Manual Shut-off

Technical specification

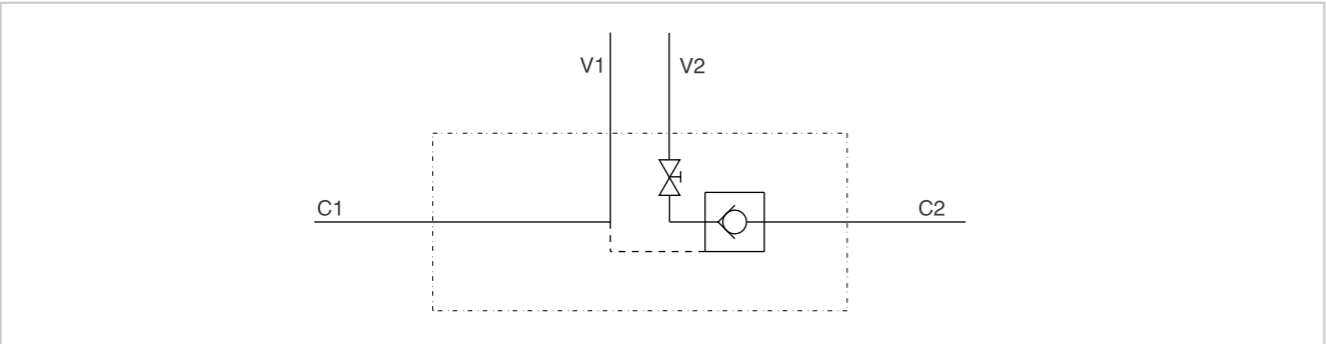


Specification	1/4" Lc/ RUBINETTO	3/8" Lc/ RUBINETTO	1/2" Lc/ RUBINETTO	1/4" Lc/ RUB.2 CEXC	3/8" Lc/ RUB.2 CEXC	1/2" Lc/ RUB.2 CC
Pilot ratio	1:5.5	1:5.5	1:5	1:5.5	1:5.5	1:5
Max flow (L/min)	20	30	50	20	30	50
Max pressure (Bar)	350					
Cracking Pressure (Bar)	4	3	3	4	4	3

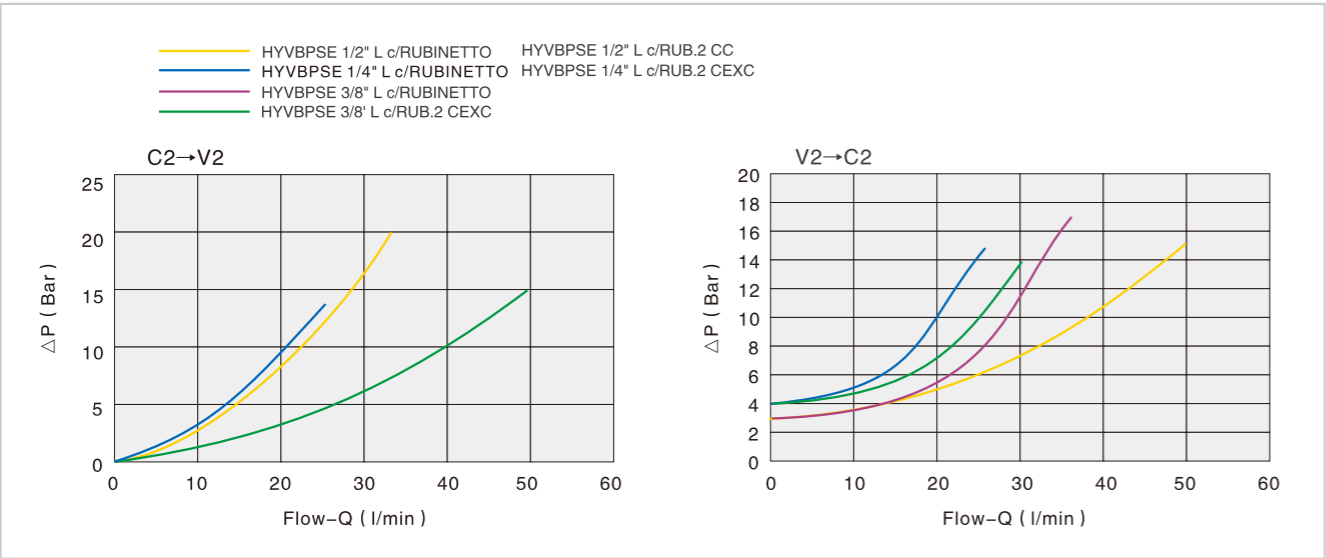
Use and operation:
 Pilot check valves are used to block the actuator in both directions. Flow is free in one direction and blocked in the reverse direction until pilot pressure is applied. These valves are very safe, that's why they are ideal to be assembled on crane hydraulic cylinders. The shut-off system enables to exclude any risk caused by possible manoeuvring errors.

Applications:
 Connect V1 and V2 to the pressure flow, C1 to the free flow side of the actuator and C2 to the actuator's side you want the flow to be blocked.

Code symbol

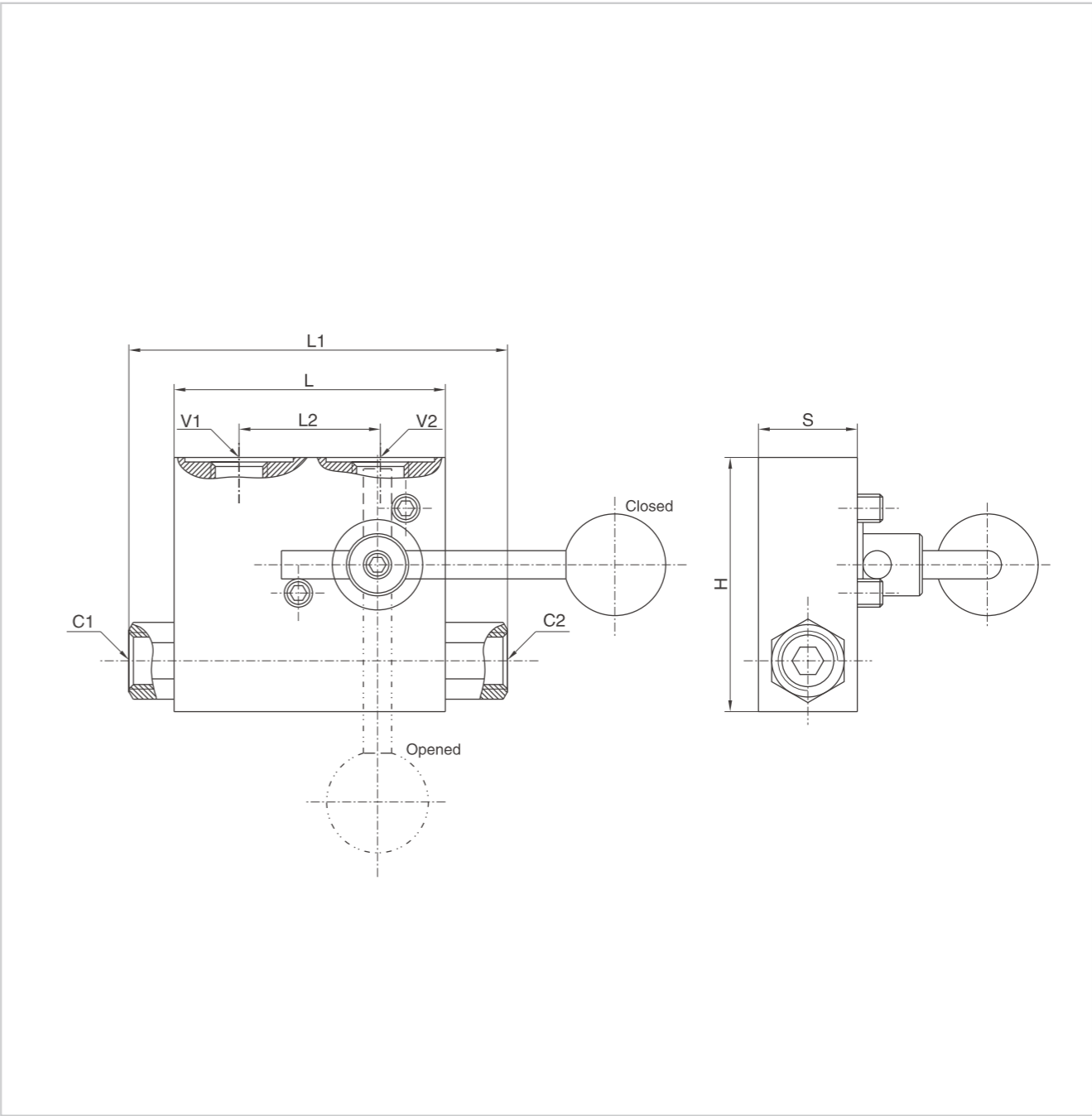


Pressure drops curve



Single Pilot Operated Check Valves With Manual Shut-off

External dimensions



Type	V1/V2/ C1/C2	L	L1	L2	H	S
HYVBPSE 1/4" L c/ RUBINETTO	G 1/4"	64	112	34	60	30
HYVBPSE 3/8" L c/ RUBINETTO	G 3/8"	64	118	36	60	30
HYVBPSE 1/2" L c/ RUBINETTO	G 1/2"	90	142	45	70	35
HYVBPSE 1/4" L c/RUB.2 CEXC	G 1/4" 12L	64	131	34	60	30
HYVBPSE 3/8" L c/RUB.2 CEXC	G 3/8" 12L	64	131	36	60	30
HYVBPSE 1/2" L c/RUB.2 CC	G 1/2" 15L	90	164	45	70	35