

Selector Valve

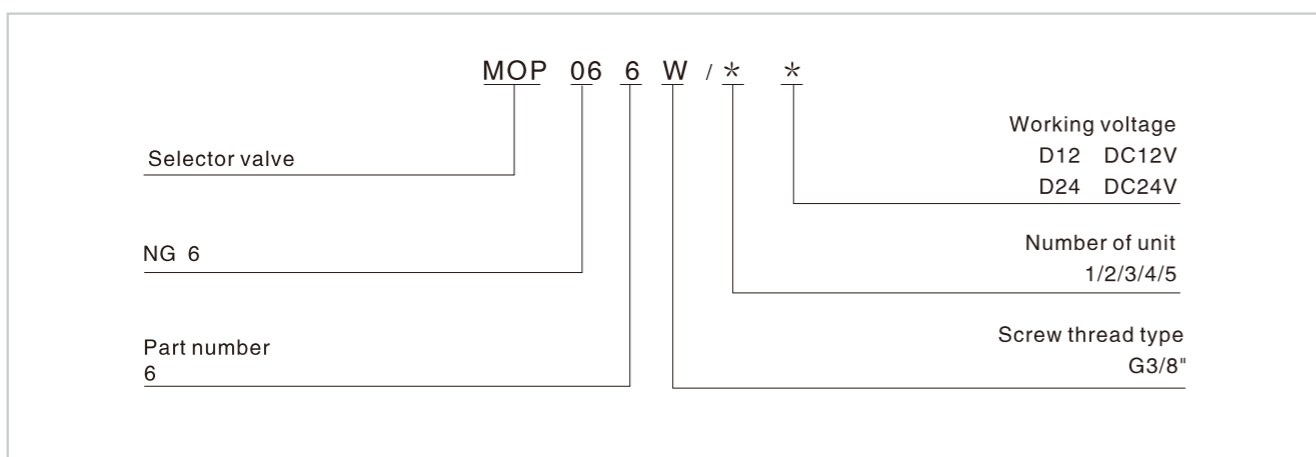
Technical specification



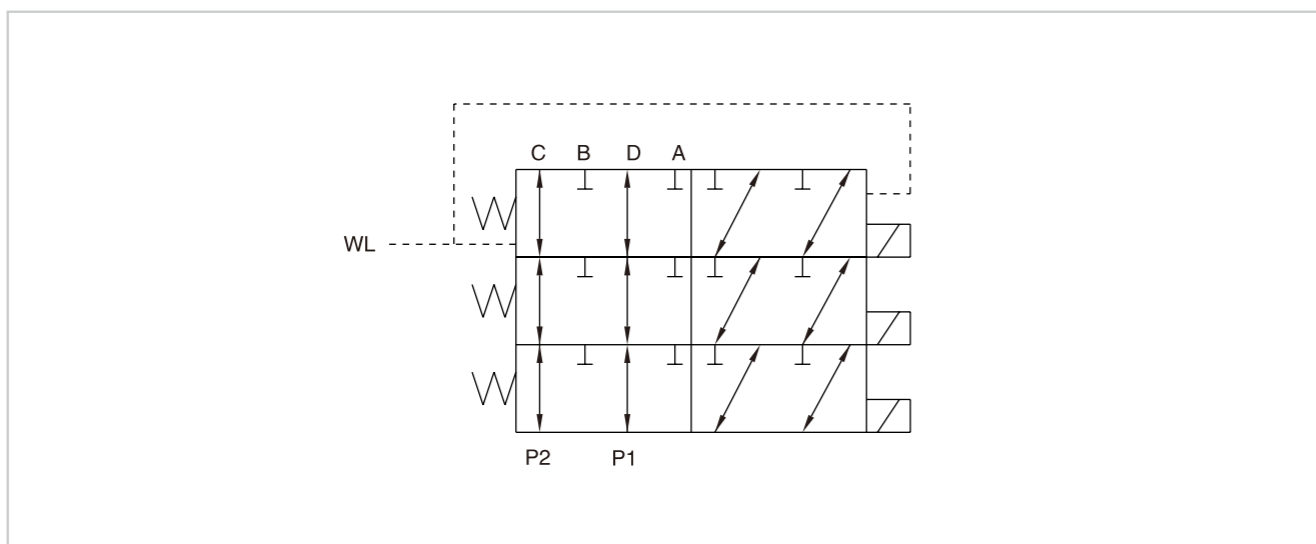
Specification		MOP06/D24
Working pressure (MPa)	Oil ports P1,P2,A,B,C,D	21
	Oil ports T	10
Max.flow (L/min)		50
Working fluid		Mineral oil;phosphate-ester
Fluid temp (°C)		-20~+80
Viscosity (mm ² /s)		-2.8~+500
Weight (kg)		3.1

Features:
E62 uses solenoid to push the spool and change the direction of fluid flow,it can control the switch of oil circuit in the hydraulic system

Model description



Code symbol



Selector Valve

External dimensions

