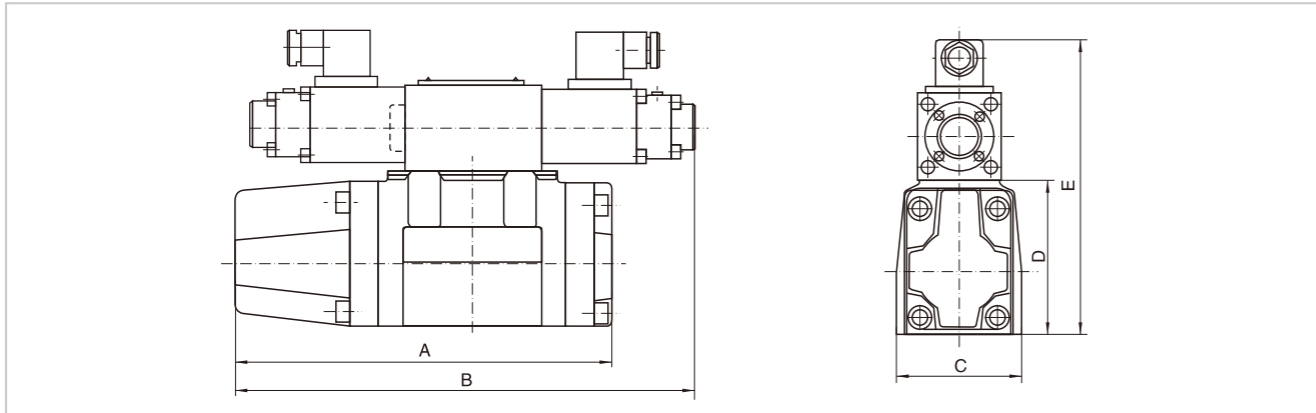


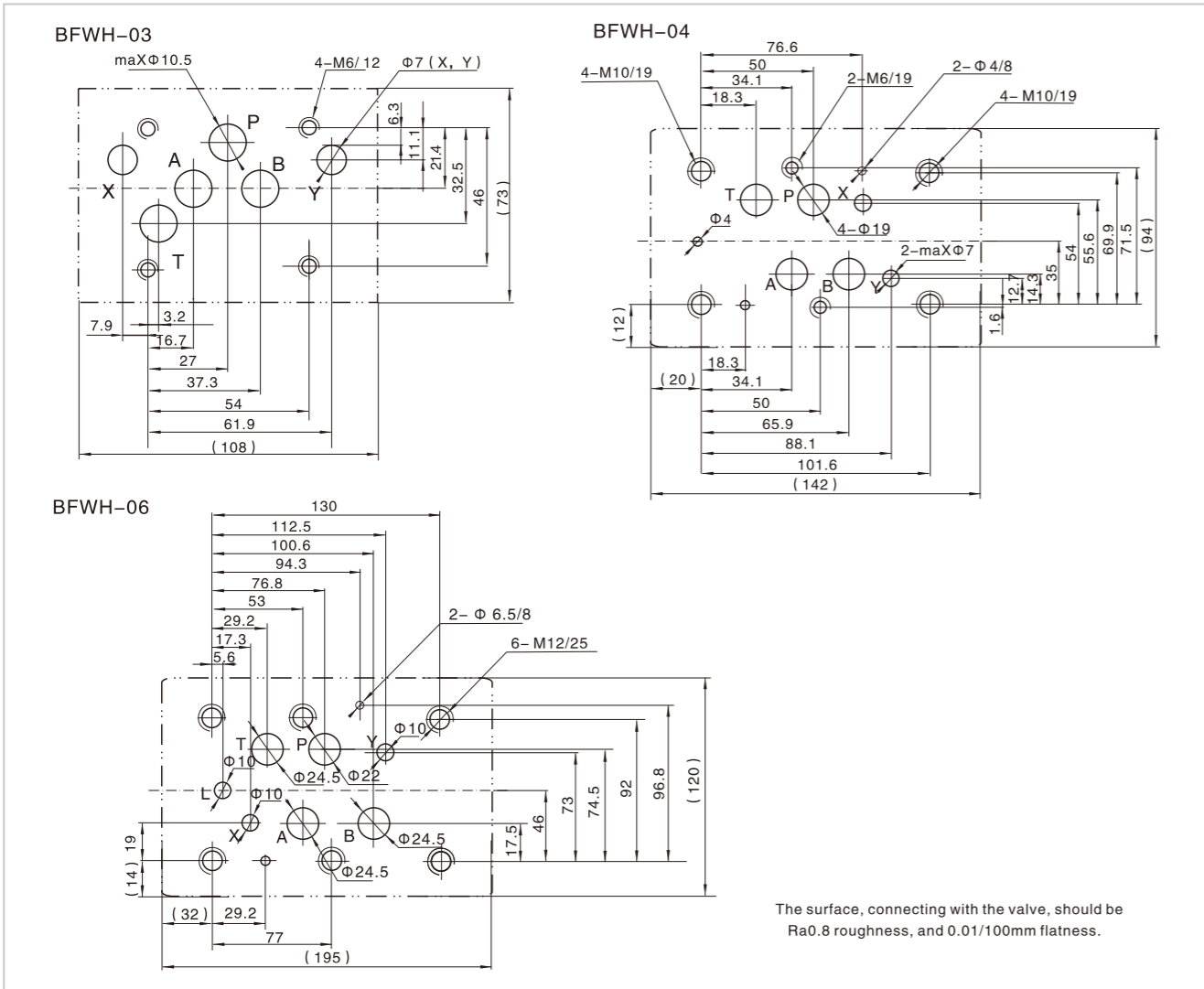
## Proportional Electro-hydraulic Directional Valve ( BFWH )

### External dimensions



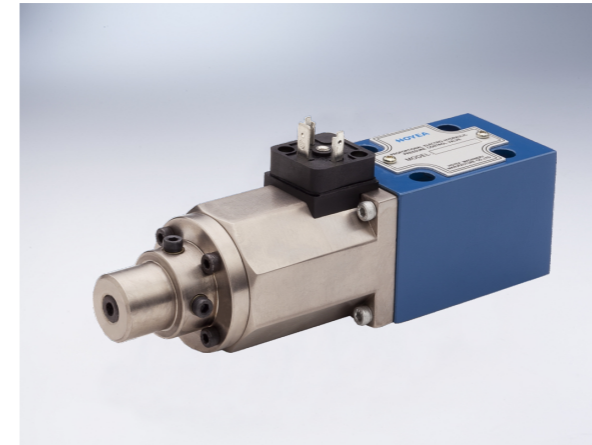
Specification	A	B	C	D	E
BFWH-03	216	250	70	86	171
BFWH-04	250	265	94	95	185
BFWH-06	280	290	120	117.5	202.5

### Plate size



## Proportional Directly Operated Relief Valve ( BYZ )

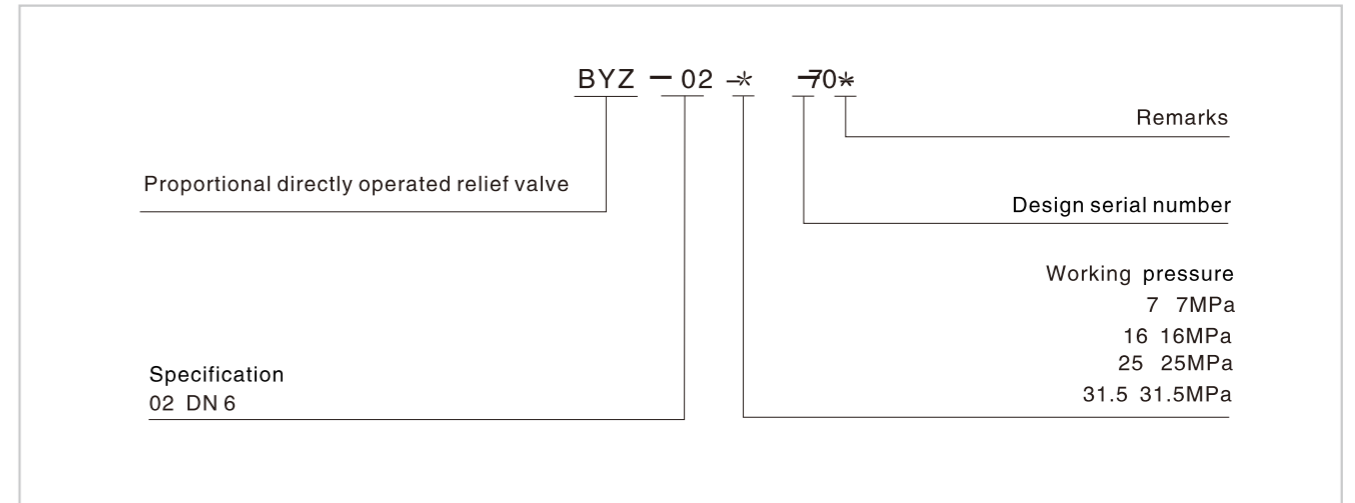
### Technical specification



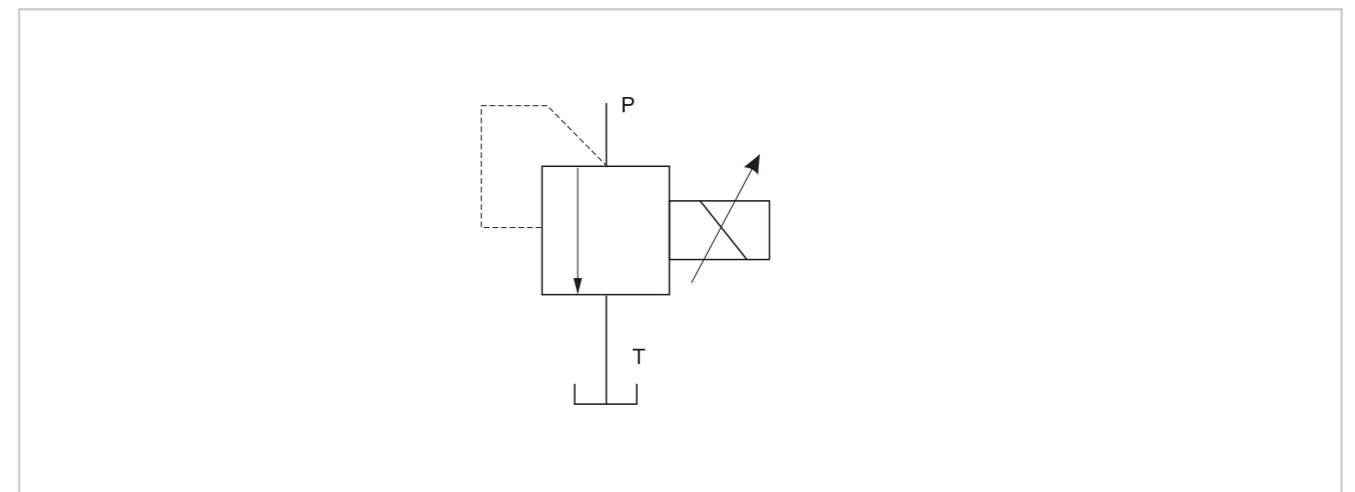
Maximum pressure (MPa)	31.5
Maximum flow (l/min)	2
Minimum flow (l/min)	0.7
Rated current (mA)	800
Coil resistance (Ω)	10~19.5
Hysteresis (%)	<±1.5
Repeatability (%)	±1
Cleanliness	Filter is recommended for the highest fluid pollution degree; the lowest specific filtration resistance according to ISO 4406 (C) 20/18/15.

The valve is a direct operated valve controlled by proportional solenoid, it is mainly used for small hydraulic system according to input current, and always is used to be taken as the pilot relief valve of a second pressure valve.

### Model instruction

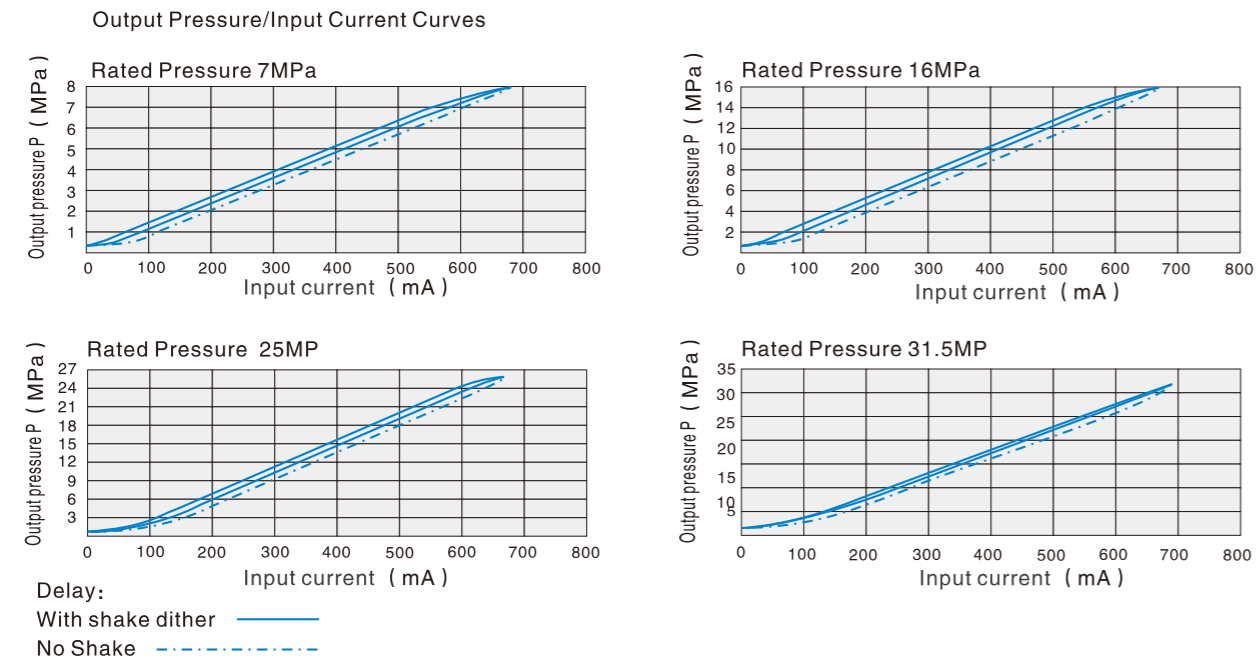


### Code symbol

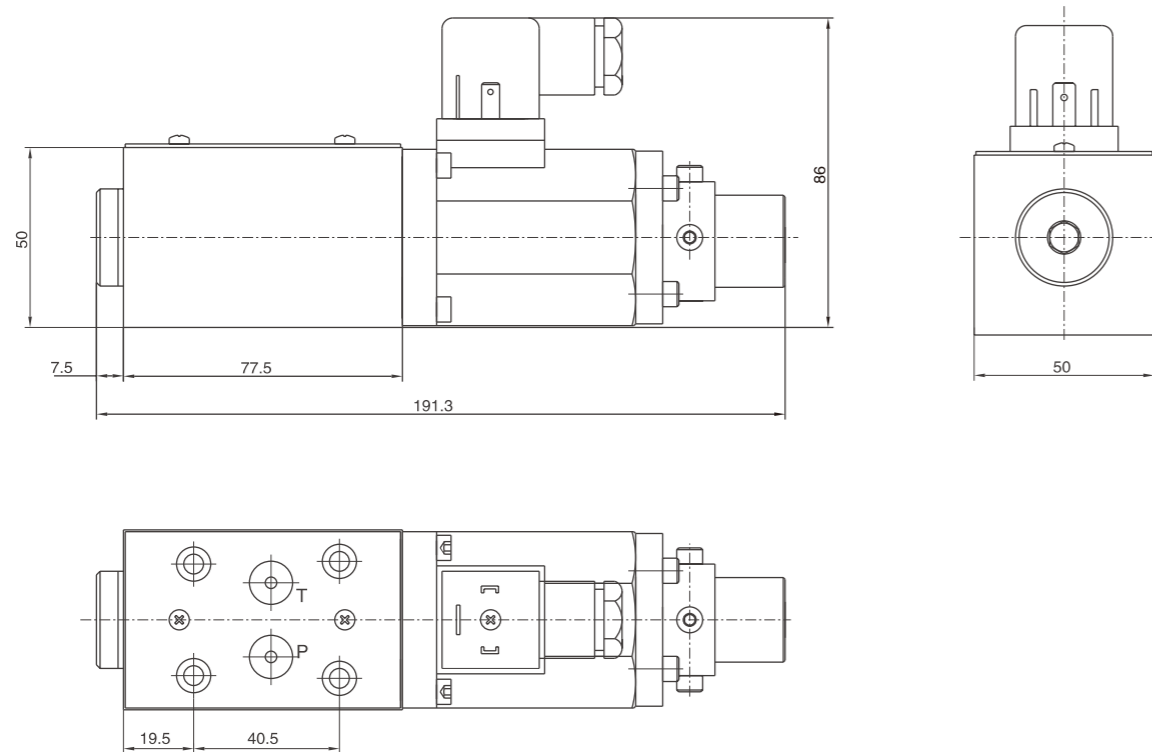


## Proportional directly operated Relief Valve ( BYZ )

### 02 Model Characteristic Curves (Measured at $v=36 \times 10^{-6} \text{m}^2/\text{S}$ $t=50^\circ\text{C}$ )

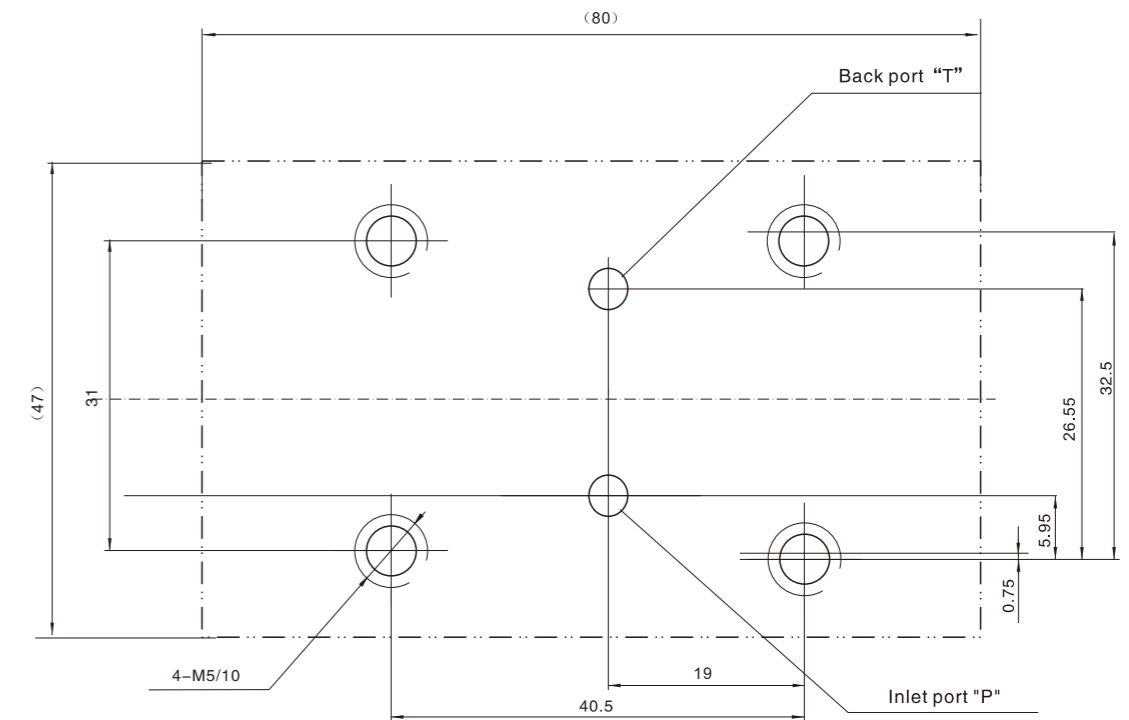


### 70 External dimensions



## Proportional Directly Operated Relief Valve ( BYZ )

### Plate size



The surface, connecting with the valve, should be Ra0.8 roughness, and 0.01/100mm flatness.