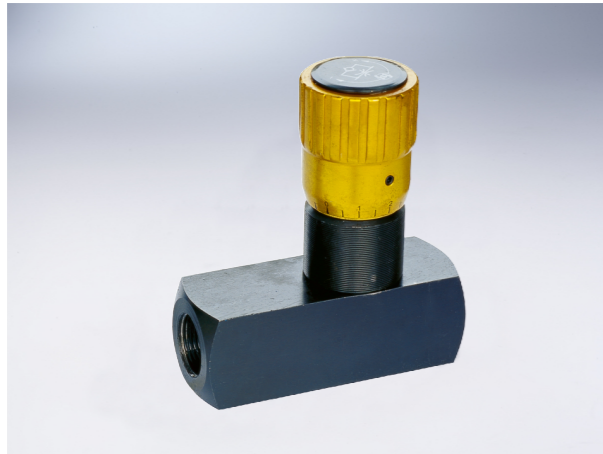


Check Restrictive Valve

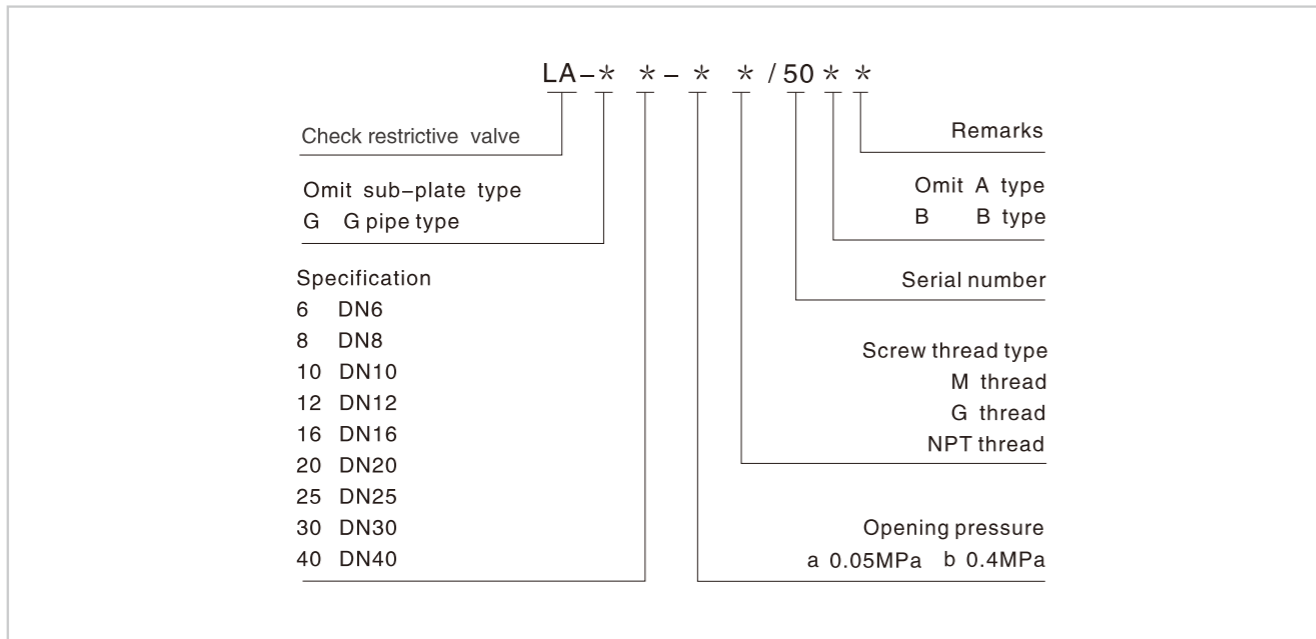
Technical specification



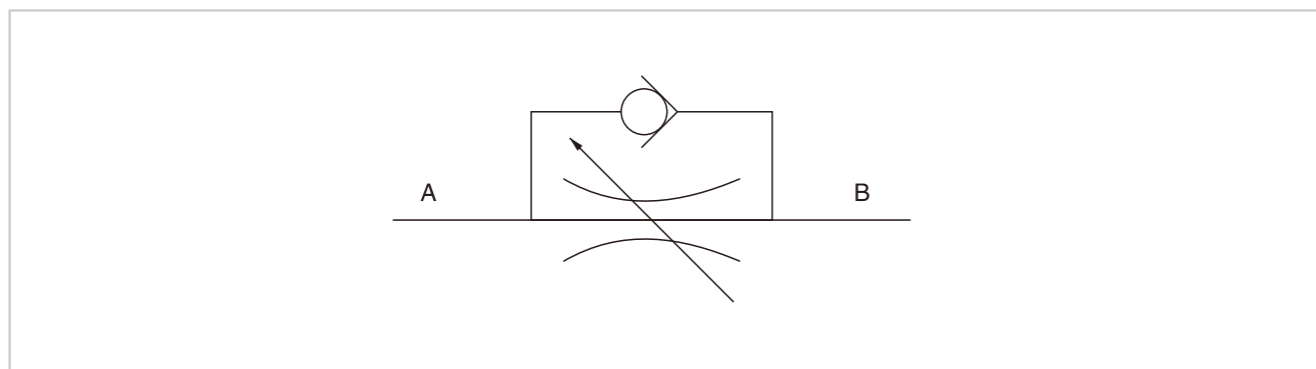
Specification	6	8	10	12	16	20	25	30	40
Max.pressure (MPa)	31.5								
Max.flow (L/min)	14	40	60	85	175	200	300	400	600
Hydraulic fluid	Mineral oil;phosphate-ester								
Fluid temp (°C)	-20~70								
Viscosity (mm ² /s)	2.8~380								
Opening pressure (MPa)	a: 0.05 b:0.4								
Cleanliness	The maximum allowable cleanliness of the oil should be according to 9th degree of Standard NAS1638.It is suggested that the minimum filter rating should be $\beta_{10} \geq 75$.								

1-way restrictive valve consists of needle valve and 1-way valve in parallel. It is used to adjust the flow in one way, and reverse back freely.

Model instruction

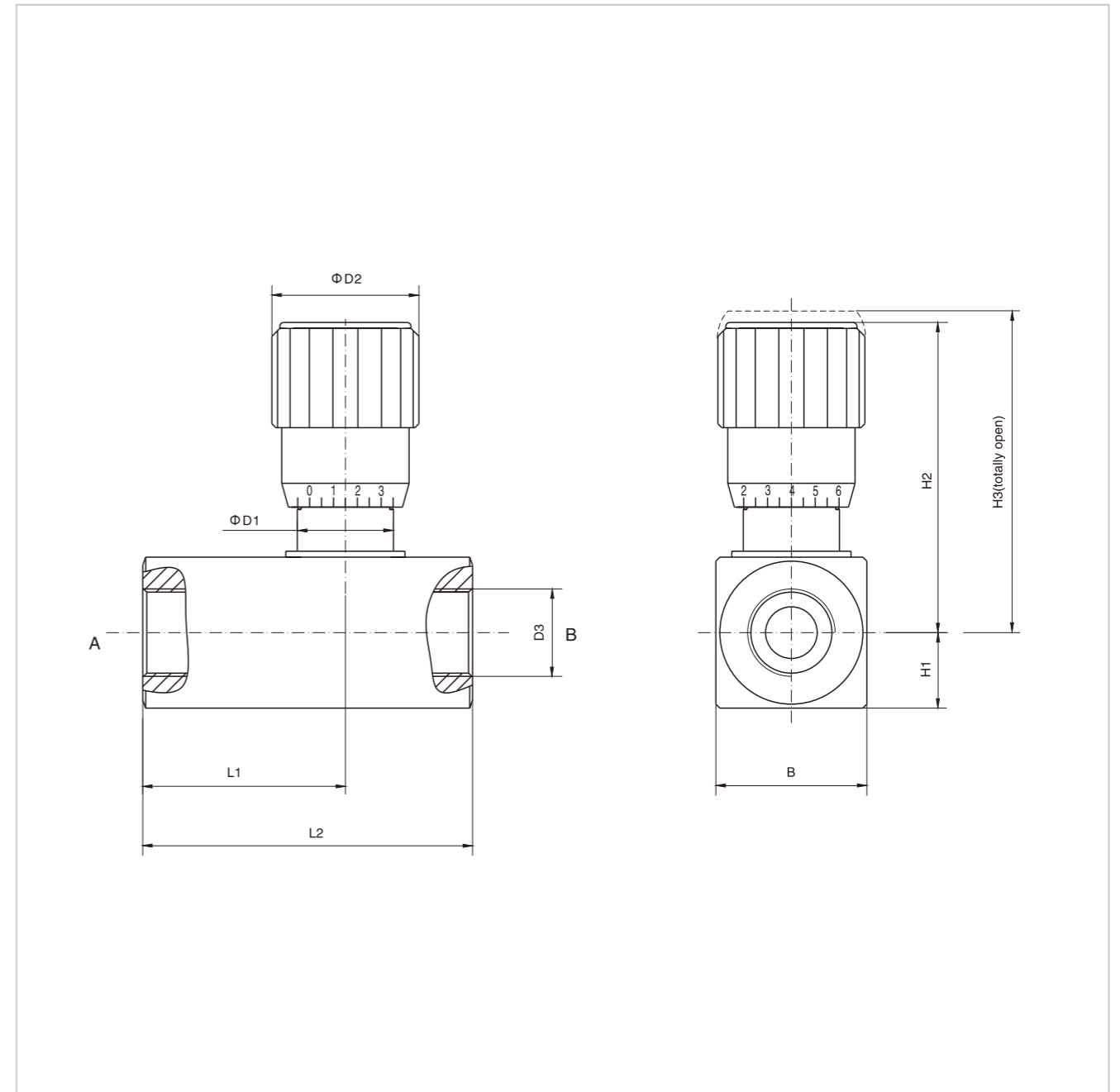


Code symbol



Check Restrictive Valve

External dimensions



Model	B	D1	D2	D3			H1	H2	H3	L1	L2
G6	28	19.3	30	M10X1	G1/8"	NPT1/8"	14	59.3	64.8	36	58
G8	28	19.3	30	M14X1.5	G1/4"	NPT1/4"	14	61.3	67.9	39	64
G10	28	19.3	30	M18X1.5	G3/8"	NPT3/8"	14	61.5	67.5	43	70
G12	38	24.2	37	M22X1.5	G1/2"	NPT1/2"	19	78.1	86.5	52	83
G16	38	24.2	37	M27X2	G3/4"	NPT3/4"	19	78.3	86.5	55.5	89
G20	48	35	48	M33X2	G1"	NPT1"	24	102.3	114.4	70.8	117
G25	60	50	48	M42X2	G1 1/4"	NPT1 1/4"	30	134.68	148.1	97	154
G30	70	70	80	M48X2	G1 1/2"	NPT1 1/2"	35	161.5	181.5	111	172
G40	90	71	80	M60X2	G2"	NPT2"	45	171.5	191.5	129	190