

# Restrictive Check Valve

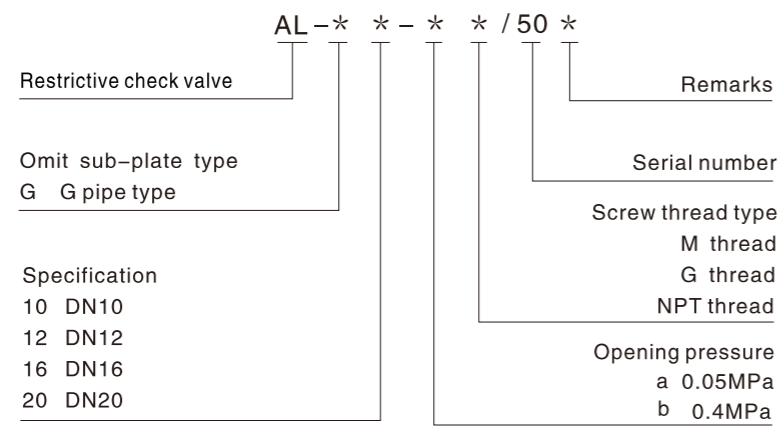
## Technical specification



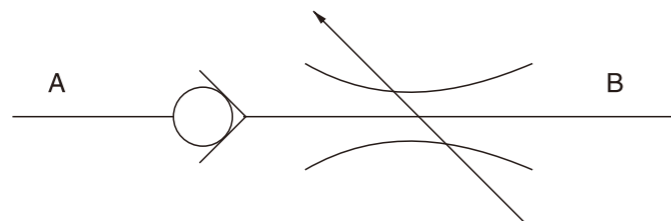
Specification	10	12	16	20
Max.pressure (MPa)	31.5			
Max.flow (L/min)	60	85	175	200
Hydraulic fluid	Mineral oil;phosphate-ester			
Fluid temp (°C)	-20~70			
Viscosity (mm <sup>2</sup> /s)	2.8~380			
Opening pressure (MPa)	a: 0.05 b:0.4			
Cleanliness	The maximum allowable cleanliness of the oil should be according to 9th degree of Standard NAS1638.It is suggested that the minimum filter rating should be β 10≥75.			

Restrictive check valve consists of restrictive valve and 1-way valve in series. It can control the flow and only allows the flow in one way. Flow will be shut off in the opposite direction.

## Model instruction

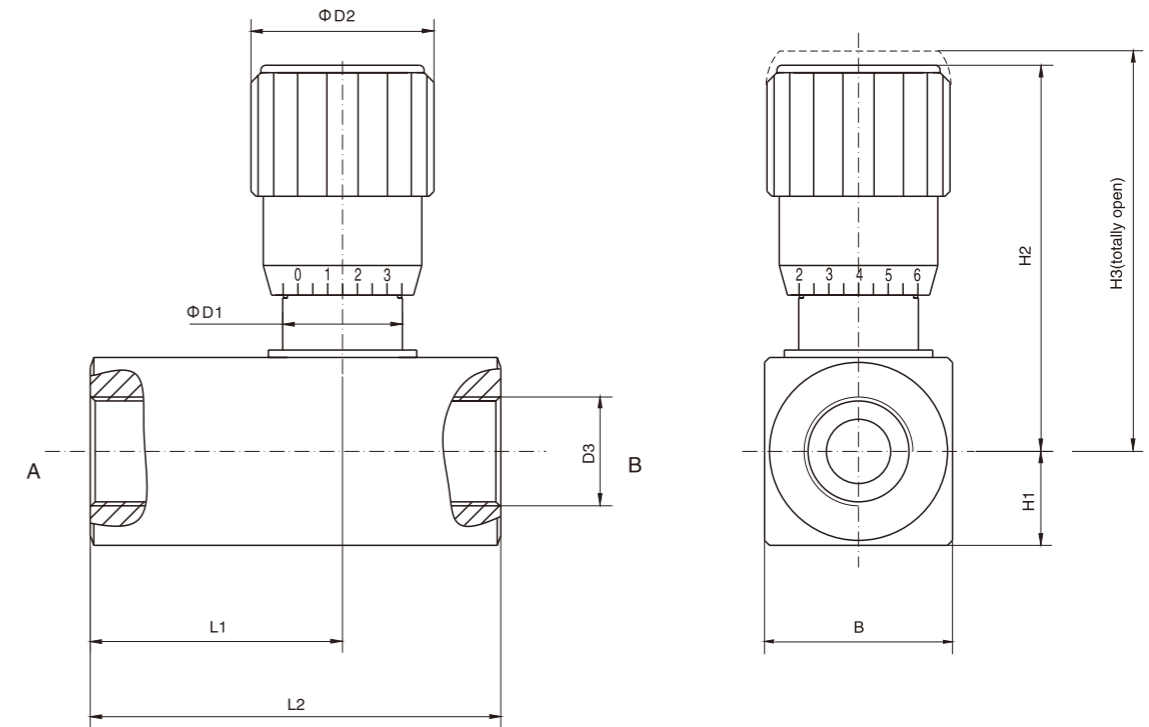


## Code symbol



# Restrictive Check Valve

## External dimensions



Model	B	D1	D2	D3			H1	H2	H3	L1	L2
G10	28	19.3	30	M18X1.5	G3/8"	NPT 3/8"	14	61.5	67.5	45.5	73
G12	38	24.2	37	M22X1.5	G1/2"	NPT 1/2"	19	78.1	86.5	54	86
G16	38	24.2	37	M27X2	G3/4"	NPT 3/4"	19	78.3	86.5	59	94
G20	48	35	48	M33X2	G1"	NPT 1"	24	102.3	114.4	74.8	123