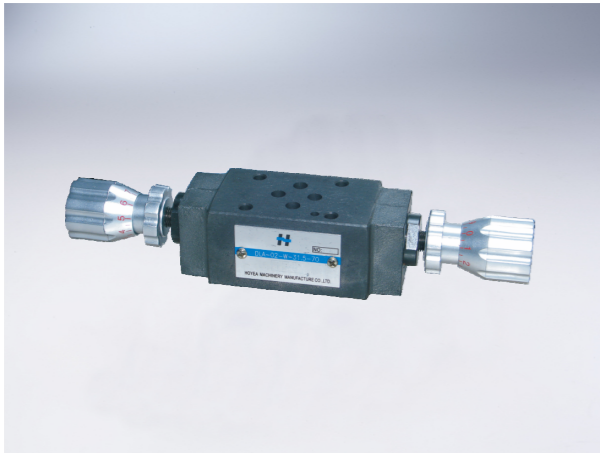


Modular Flow Control Valve

Technical specification

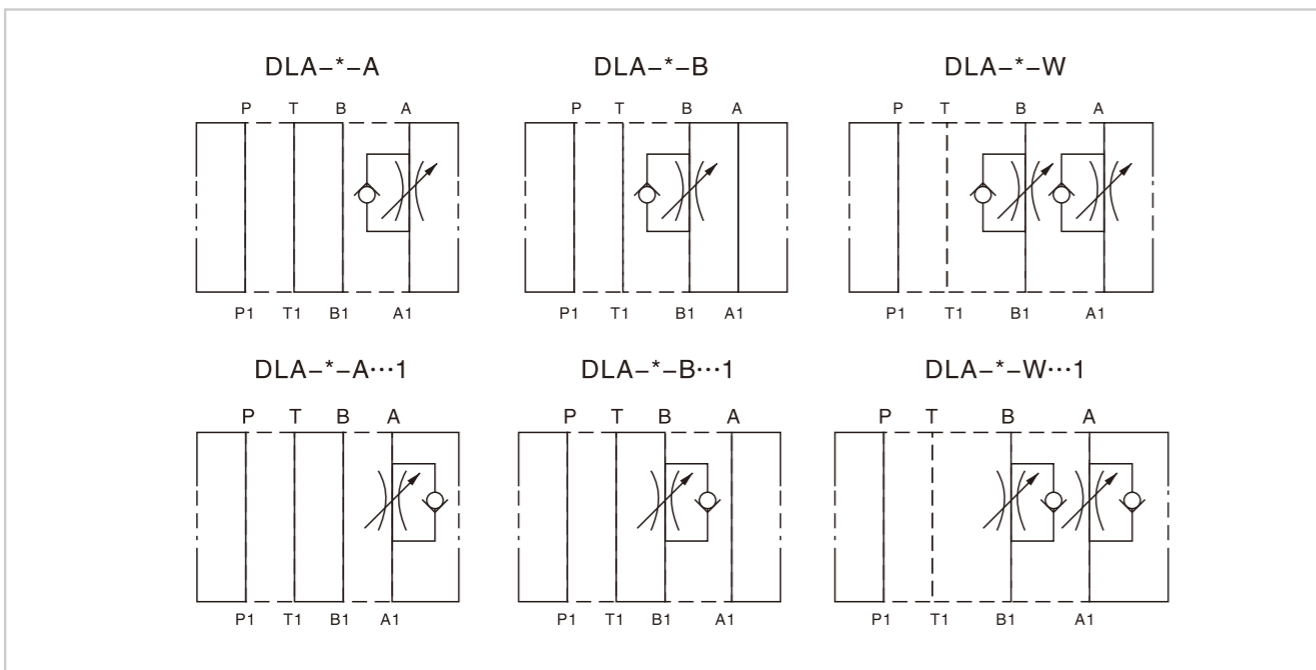


Specification	02	03
Max.pressure (MPa)	31.5	
Max.flow (L/min)	30	50
Hydraulic fluid	Mineral oil;phosphate-ester	
Fluid temp (°C)	-20~70	
Viscosity (mm ² /s)	2.8~380	
Opening pressure (MPa)	a: 0.05	
Cleanliness	The maximum allowable cleanliness of the oil should be according to 9th degree of Standard NAS1638.It is suggested that the minimum filter rating should be $\beta_{10} \geq 75$.	

Model instruction

Modular flow control valve	DLA-*	*	-*	*/	* 70	*	Remarks
Specification	02 DN6	03 DN10	A A Pipeline	B B Pipeline	W AB Pipeline	Opening pressure a 0.05MPa	Serial number
							Seal material
							Omit NBR Seals
							V FPM Seals
							Throttle direction
							Omit meter out
							1 meter in

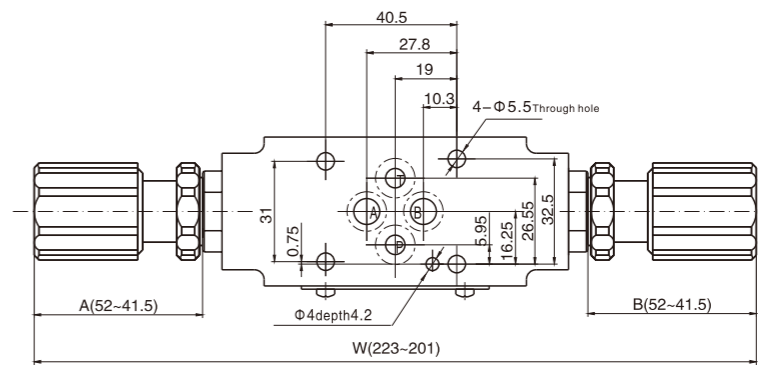
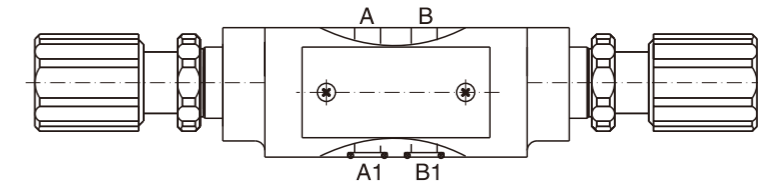
Code symbol



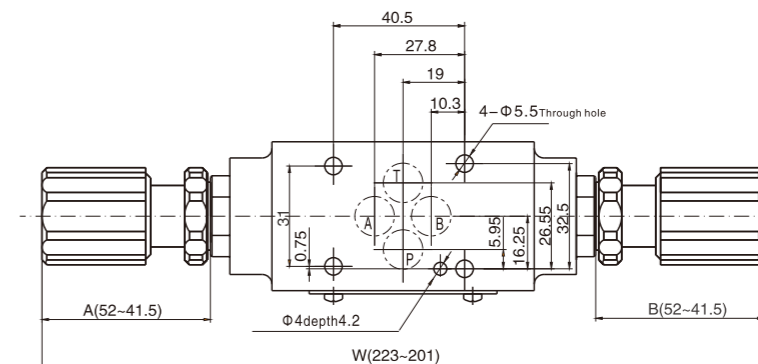
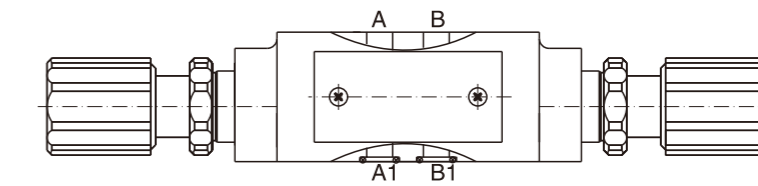
Modular Flow Control Valve

External dimensions

DLA-02- ...



DLA-02- ... 1/ ...

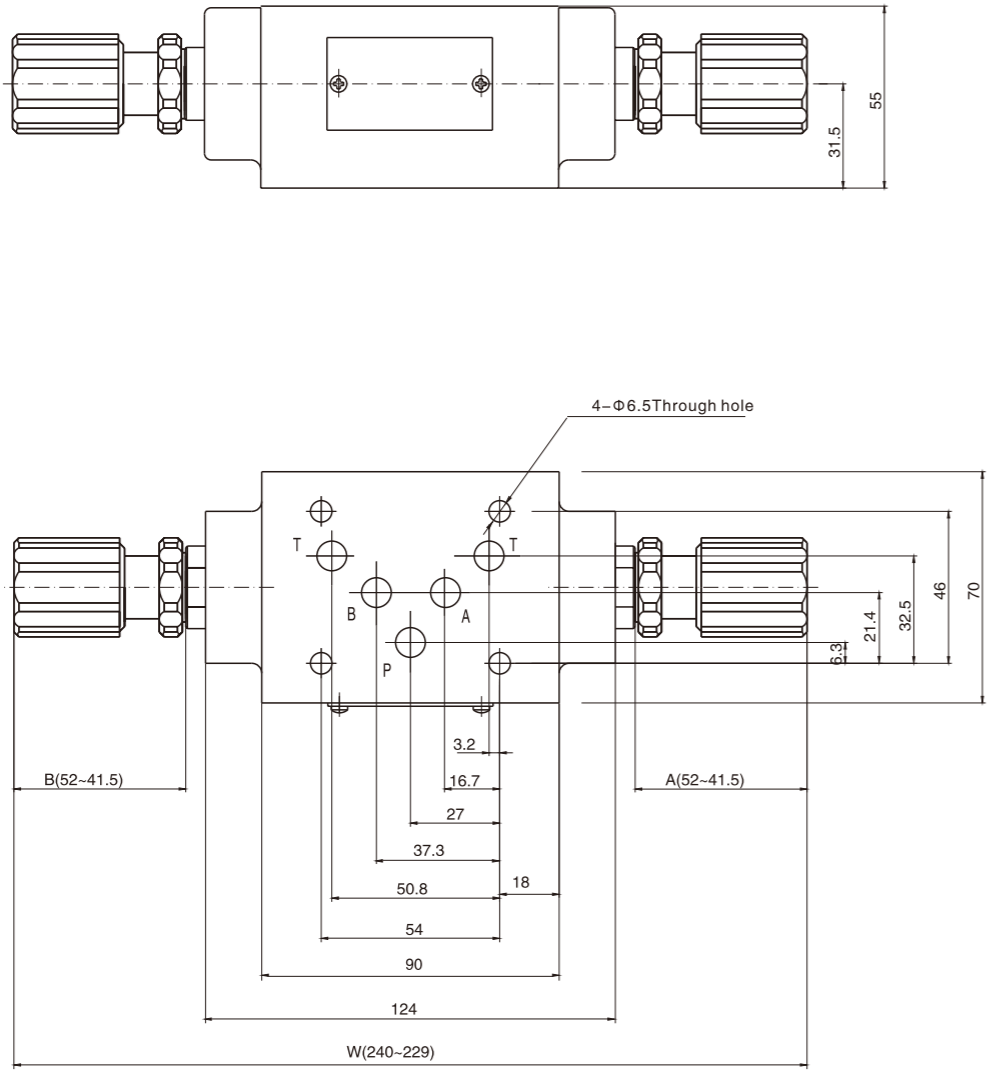


Notice: The surface, connecting with the valve, should be Ra0.8 roughness, and 0.01/100mm flatness.

Modular Flow Control Valve

External dimensions

DLA-03- ...

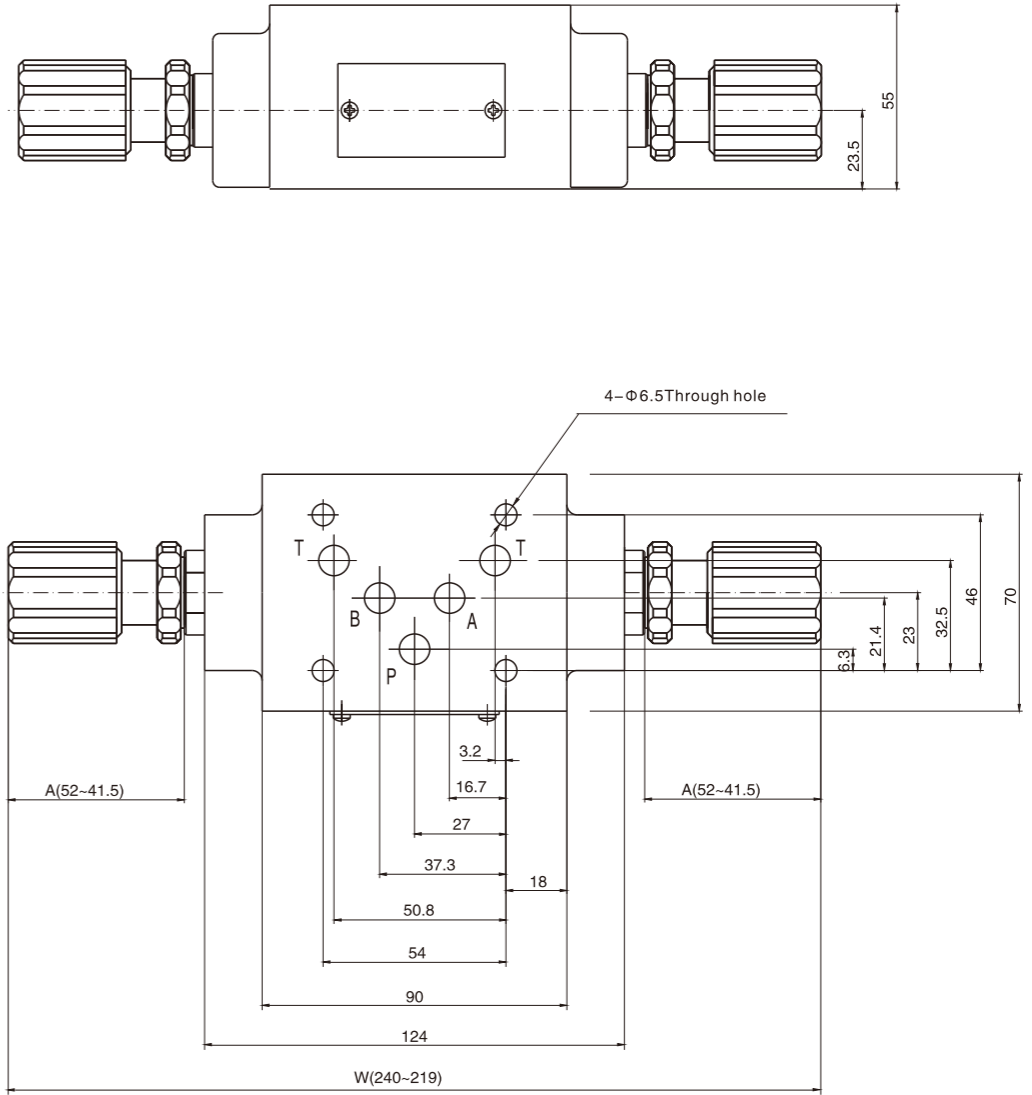


Notice: The surface, connecting with the valve, should be Ra0.8 roughness, and 0.01/100mm flatness.

Modular Flow Control Valve

External dimensions

DLA-03- ... 1/ ...



Notice: The surface, connecting with the valve, should be Ra0.8 roughness, and 0.01/100mm flatness.

C.5.3

C.5.4