

# Hydraulic-operated Check Valve

## Technical specification



Specification	03	06	10
Max. working pressure (Mpa)	31.5		
Control pressure (Mpa)	0.5~31.5		
Max. Flow (L/min)	100	350	550
Working fluid	Mineral oil; phosphate-ester		
Fluid temp. (°C)	-20~70		
Viscosity (mm <sup>2</sup> /s)	2.8~380		
Opening pressure (Mpa)	a:0.15	b:0.3	c:0.6 d:1.0
Cleanliness	The maximum allowable cleanliness of the oil should be according to 9th degree of Standard NAS1638. It is suggested that the minimum filter rating should be $\beta_{10} \geq 75$ .		

Hydraulic-operated check valve allows oil to flow in only one direction, and it can not allow the oil to flow in the opposite direction unless it uses the hydraulic control.

Hydraulic-operated check valve can be used as two way on-off valve, and also can be seen as a pressure retaining valve or a sustaining valve of the standing fluid cylinders.

## Model description

Hydraulic-operated check valve  
 A1Y Internal discharge type  
 A2Y External discharge type

Specification

Plate connecting type	Pipe connecting type	Screw thread connector
03 NS10	10 DN10	G1/2" or M22x1.5
06 NS20	15 DN15	G3/4" or M27x2
	20 DN20	G1" or M33x2
	25 DN25	G1 1/4" or M42x2
10 NS30	30 DN30	G1 1/2" or M48x2

Omit Plate connecting type  
 G Pipe connecting type-G Screw  
 G2 Pipe connecting type-M Screw

A with unloading function  
 B Without unloading function

AY - \* \* \* - \* / \* 50 \*

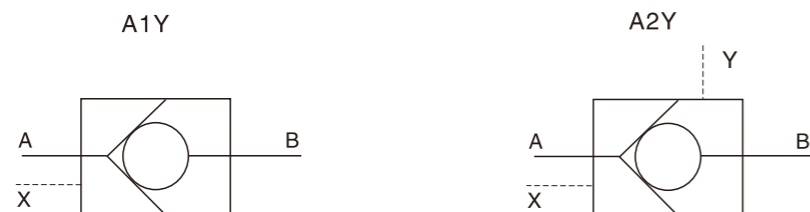
Remarks

Serial number

Seal material  
 Omit NBR Seals  
 V FPM Seals

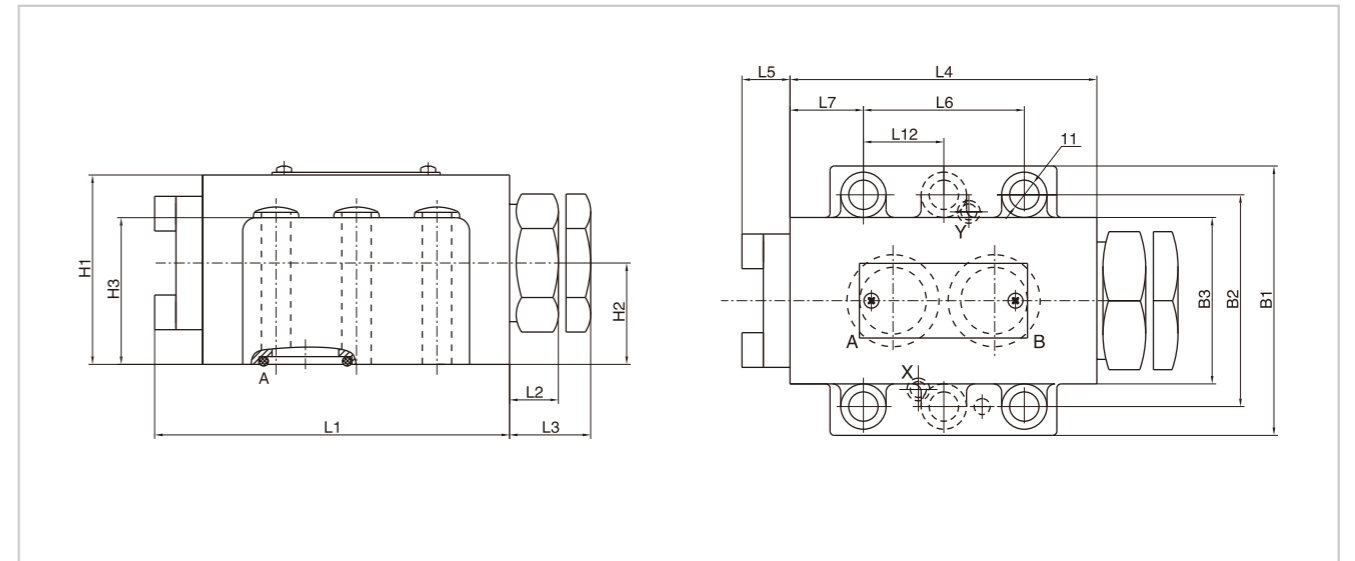
Opening pressure  
 a 0.15  
 b 0.3  
 c 0.6  
 d 1.0

## Code symbol



# Hydraulic-operated Check Valve

## External dimensions



## Size of subplate

Supplementary explanation

- When installing the product, considering horizontal position firstly.
- The medium used in the hydraulic system must be filtered, its accuracy is at least 20 μm.
- Screw should be according to the parameters in catalogue.
- The surface, connecting with the valve, should be Ra0.8 roughness, and 0.01/100mm flatness.

Model	Specification	L1	L2	L3	L4	L5	L6	L7	L8	L9	L10		L11	L12	L13	L14	L15
											A1Y	A2Y					
A1Y	03	102	14.3	15.5	89	13	42.9	18.5	7.2	35.8	-	21.5	21.5	-	31.8	23	6
	06	133	18.3	47.7	115	18	60.3	27.5	11.1	49.2	-	39.5	20.6	-	44.5	24	6
A2Y	10	156	35.6	46.1	134	22.1	84.2	39	16.7	67.5	-	42.1	24.6	42.1	62.7	25	6

Model	Specification	B1	B2	B3	B4	B5		H1	H2	H3	D1	D2	D3	D4
						A1Y	A2Y							
A1Y	03	84	66.7	44	58.8	-	7.9	51	29	36	M10	13	6	7
	06	101	79.4	62.4	73	-	6.4	71	38	55	M10	22	6	7
A2Y	10	117	96.8	77	92.8	-	3.8	85	42.5	70	M10	32	6	7