

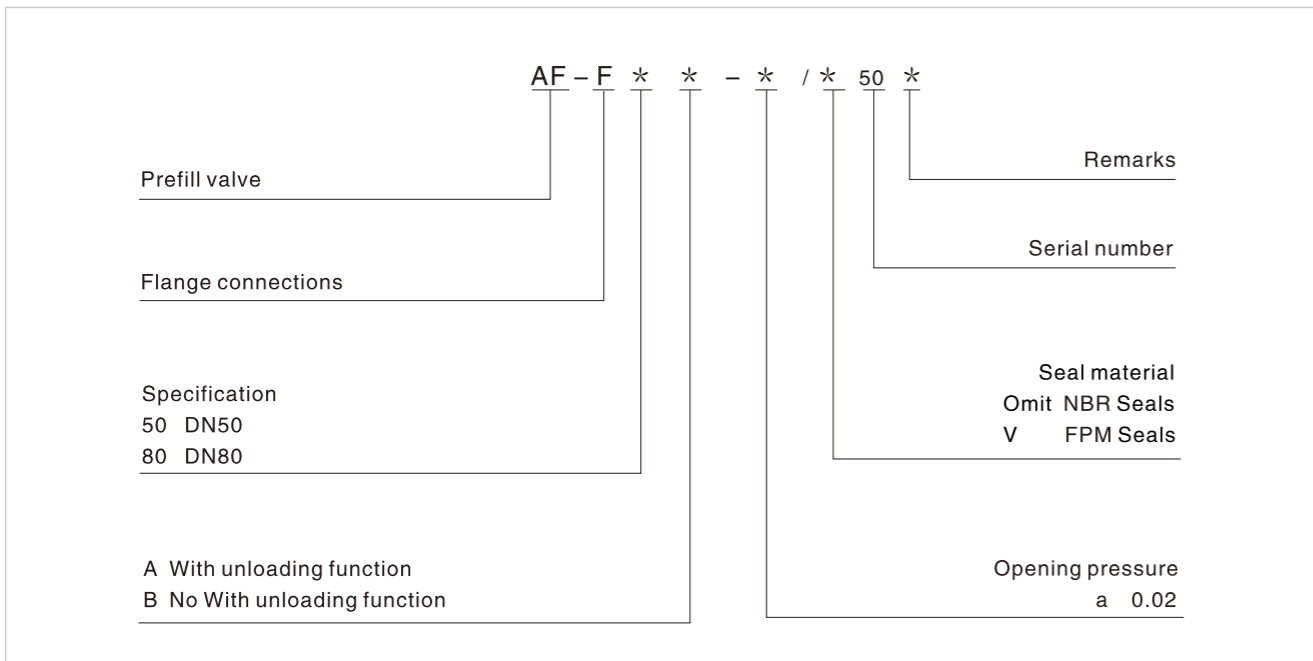
Prefill Valve

Technical specification

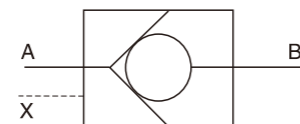


Specification		50	80
Max. working pressure (Mpa)	A	1.6	
	B	31.5	
	C	31.5	
	(L/min)	-	
Working fluid		Mineral oil; phosphate-ester	
	(°C)	-20~70	
Viscosity	(mm ² /s)	2.8~380	
	(MPa)	a:0.02	
Weight (kg)		14	32
Cleanliness	The maximum allowable cleanliness of the oil should be according to 9th degree of Standard NAS1638. It is suggested that the minimum filter rating should be β 10 ≥ 75.		

Model description

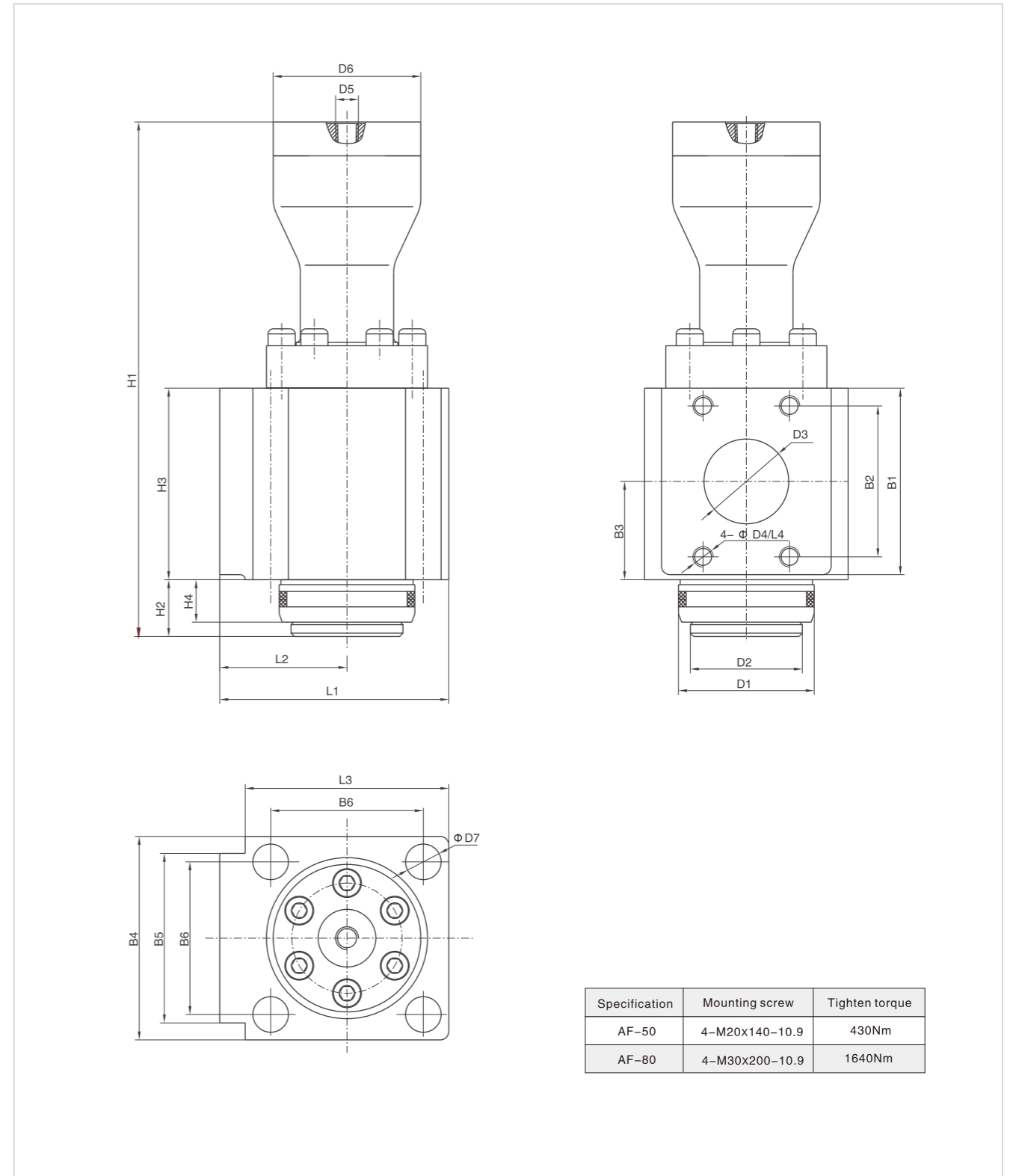


Code symbol



Prefill Valve

External dimensions



Specification	Mounting screw	Tighten torque
AF-50	4-M20x140-10.9	430Nm
AF-80	4-M30x200-10.9	1640Nm

Specification	L1	L2	L3	L4	B1	B2	B3	B4	B5	B6	H1	H2	H3	H4	D1	D2	D3	D4	D5	D6	D7
AF-50	135	75	120	16	110	89	58	120	100	90	303.5	33.5	113	25	80f7	66	50	M12	NPT / 4"	87	21
AF-80	192	102	180	20	157	106.5	77.5	180	115	130	357.5	40.5	160	30	115f7	97	76	M16	NPT / 4"	87	31