

Hydraulic-operated Directional Control Valve

Parameter

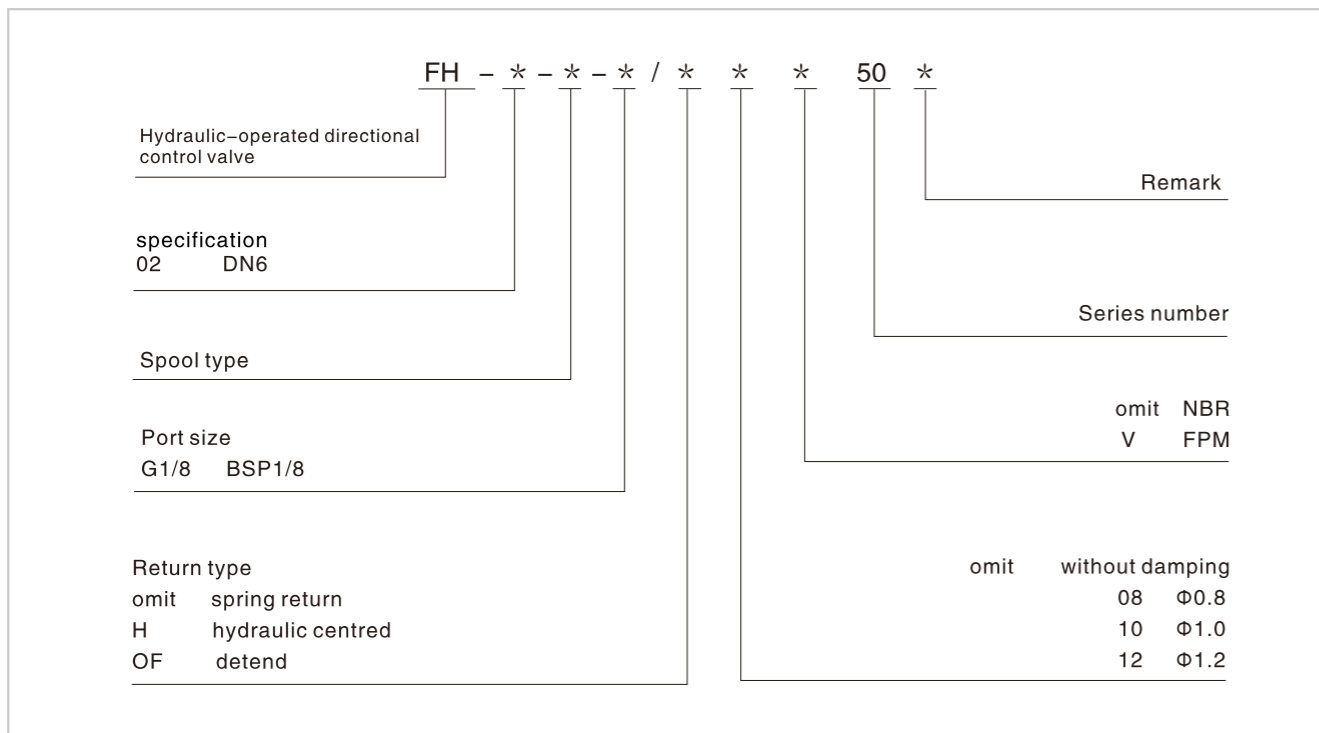


Model	02	
Working pressure (MPa)	Oil port P, A,B	31.5
	Oil port T	16
Max flow rate (L/min)	60	
Working fluid	Mineral oil; Phosphate oil	
Fluid temp (°C)	-20~70	
Cleanliness	NAS1638 Class 9, recommended filtration precision Min $\beta_{10} \geq 75_0$	

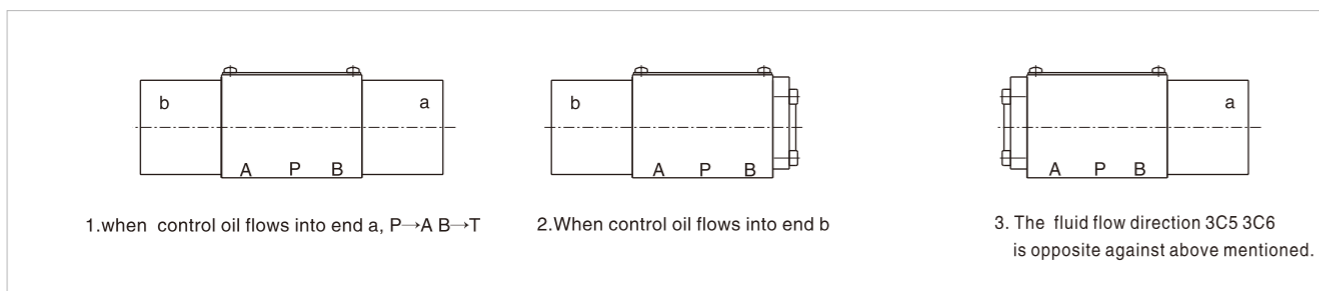
(Please consult us if your application is over above data)

The spool inside the valve FH-02 is driven by hydraulic control oil, so that to change the fluid direction.

Ordering code



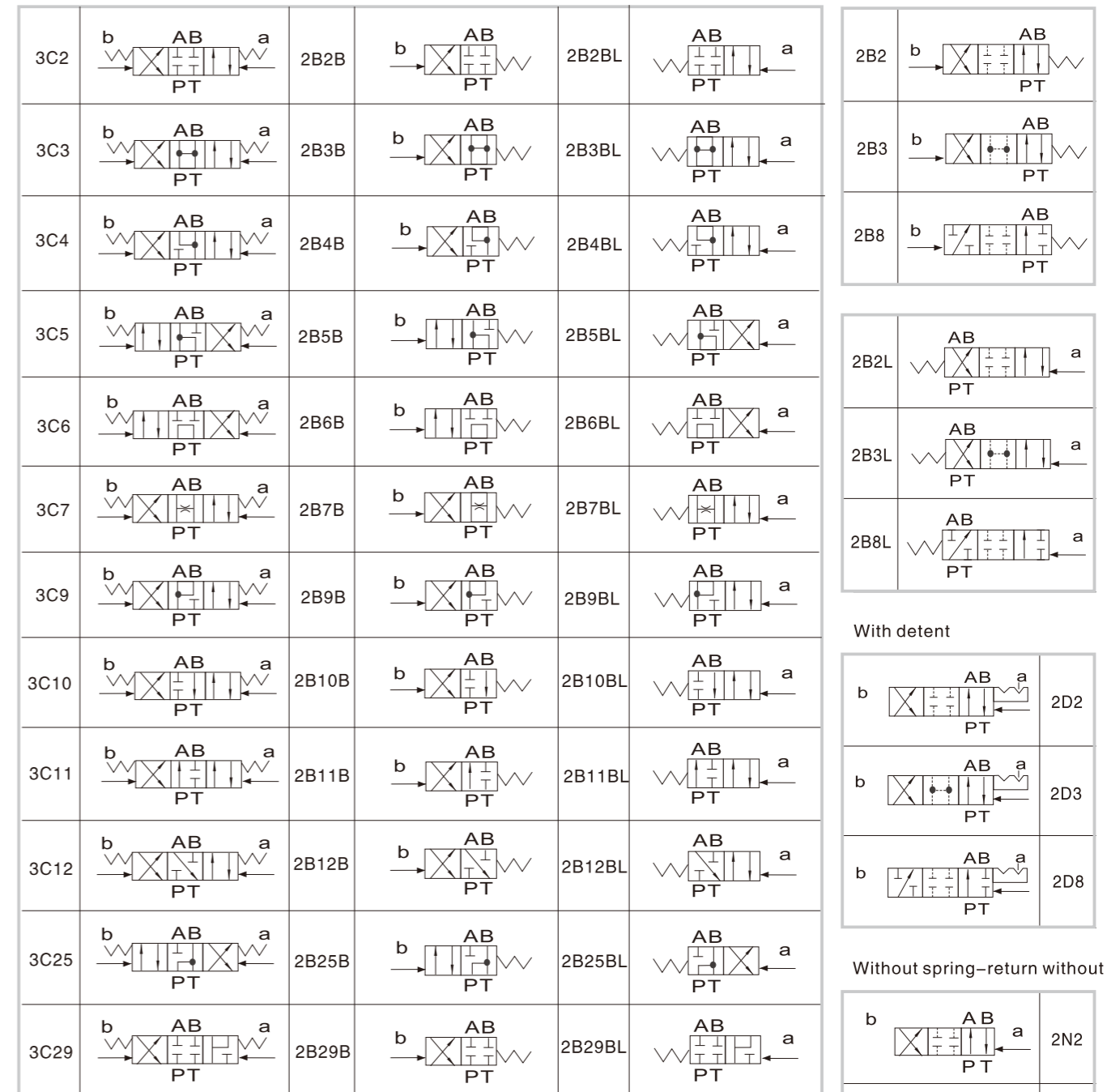
The name of control oil port



Hydraulic-operated Directional Control Valve

Spool type

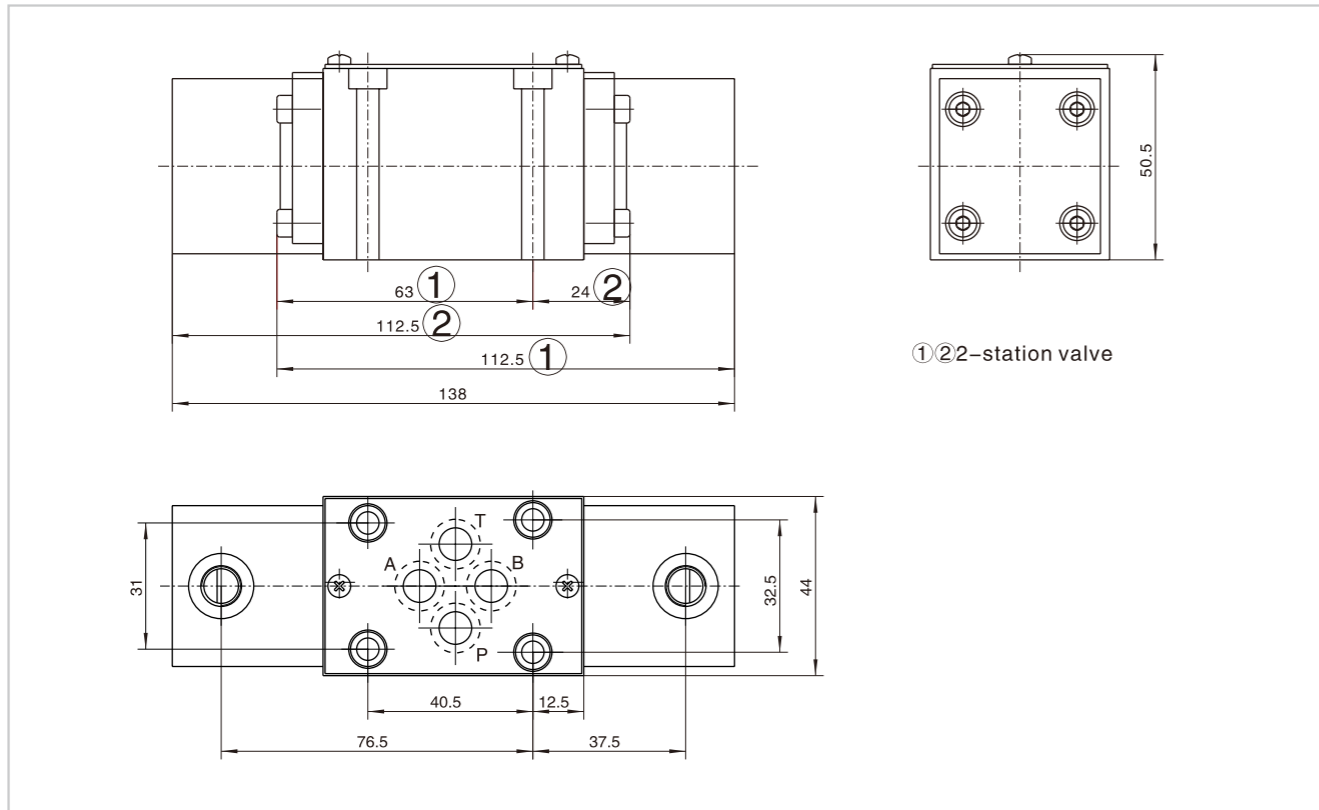
Spring-return



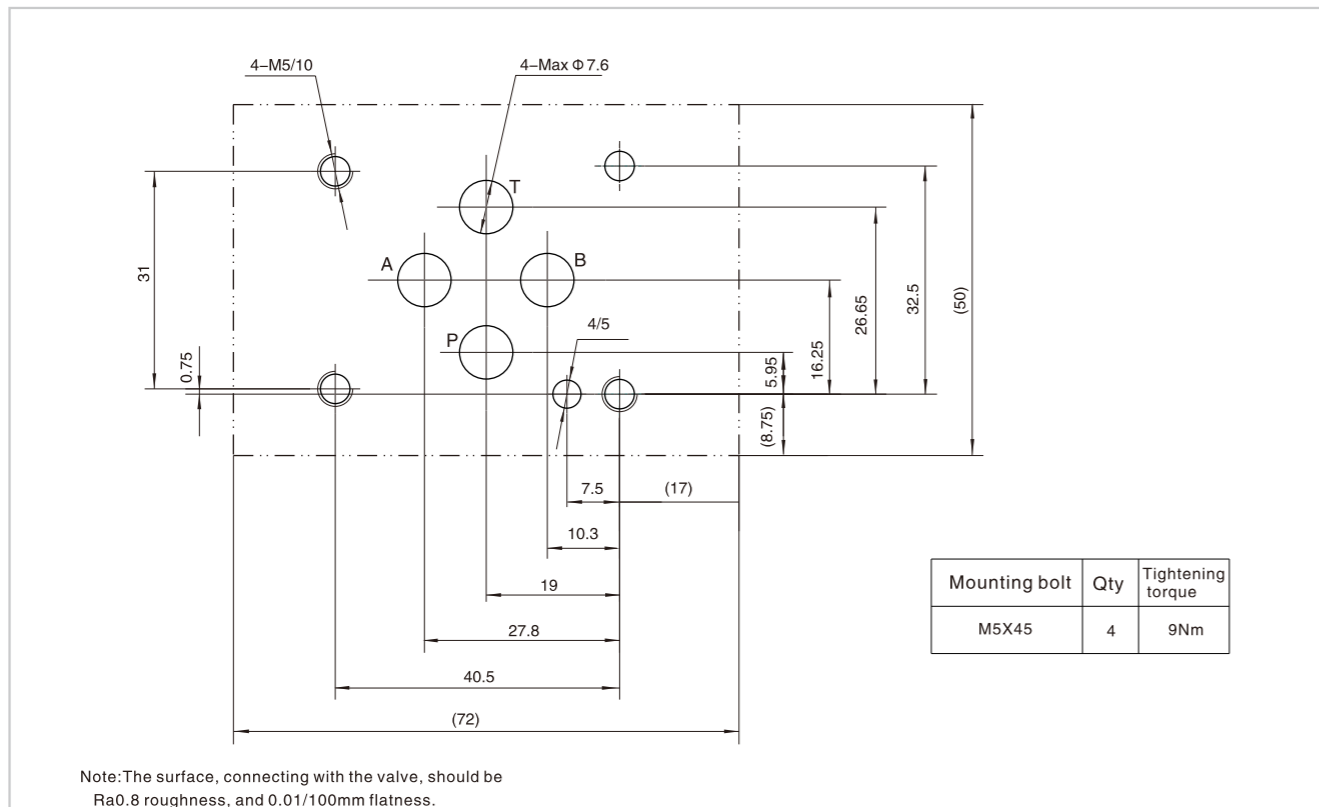
Note: *D* (without spring-return without detent), the valve shall be mounted in horizontal direction.

Hydraulic-operated Directional Control Valve

Dimension



Subplate size



Water-proof Electrical Operated Directional Control Valve

Technical specification



Specification		02
Working pressure (MPa)	Oil ports P, A, B	31.5
	Oil port T	10
Max. Flow (L/min)		80
Working fluid	Mineral oil; phosphate-ester	
Fluid temp. (°C)	-20~70	
Viscosity (mm ² /s)	2.8~380	
Working voltage (V)	DC 12 24	
Max. Switch frequency (T/h)	15000	
Insulation grade	Ip65	
Cleanliness	The maximum allowable cleanliness of the oil should be according to 9th degree of Standard NAS1638. It is suggested that the minimum filter rating should be β 10 ≥ 75.	

Water-proof electrical operated directional control valve uses solenoid to pull the spool and change the direction of the hydraulic oil.

Water-proof electrical operated directional control valve can directly control the start, stop and direction of a fluid flow. It also can be used as the pilot-operated valve, which could operate other valves.

Supplement: Water-proof electrical operated directional control valve is usually used at damp environment such as garbage trucks.

Model description

