

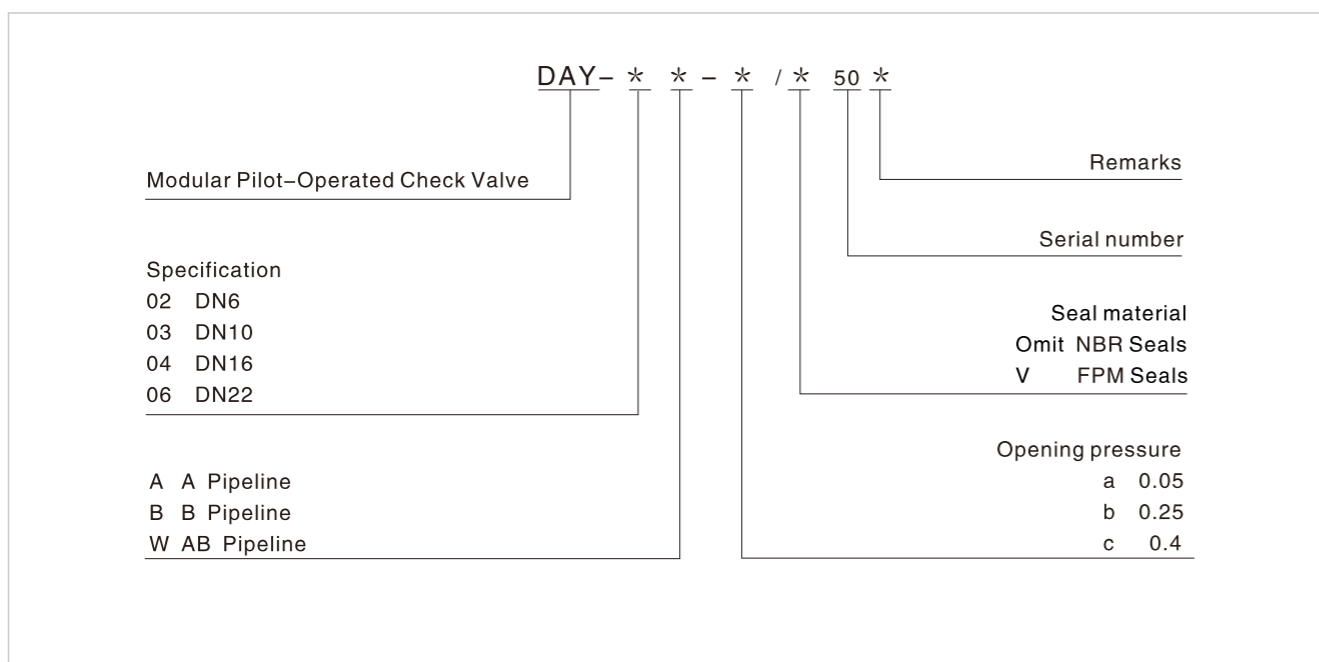
Modular Pilot-operated Check Valve

Technical specification

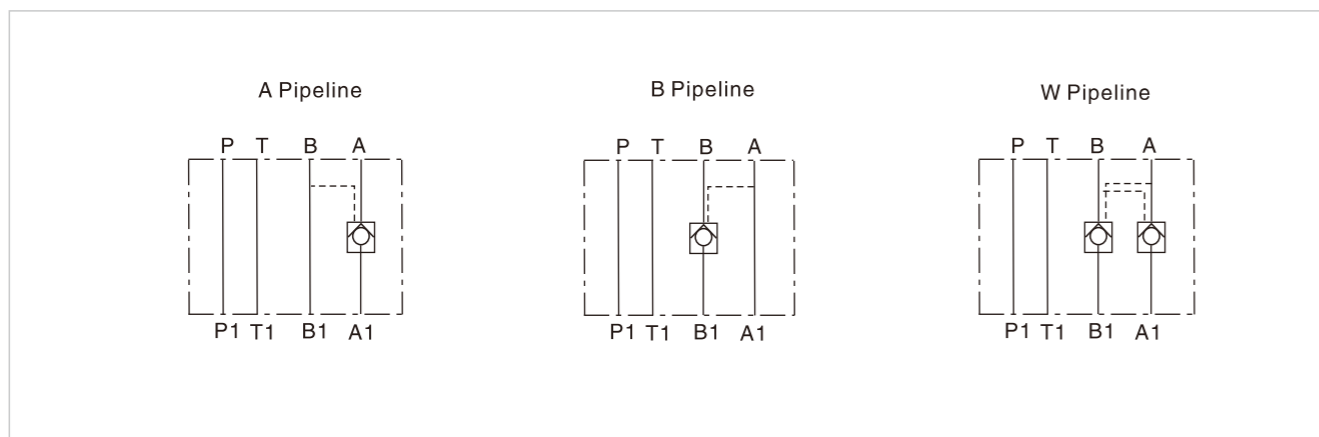


Specification	02	03	04	06
Max. working pressure (Mpa)	31.5			
Max. Flow (L/min)	60	100	200	360
Working fluid	Mineral oil;phosphate-ester			
Fluid temp. (°C)	-20~70			
Viscosity (mm ² /s)	2.8~500			
Opening pressure (MPa)	a0.05	b0.25	c0.4	
Cleanliness	The maximum allowable cleanliness of the oil should be according to 9th degree of Standard NAS1638.It is suggested that the minimum filter rating should be β 10≥75.			

Model description

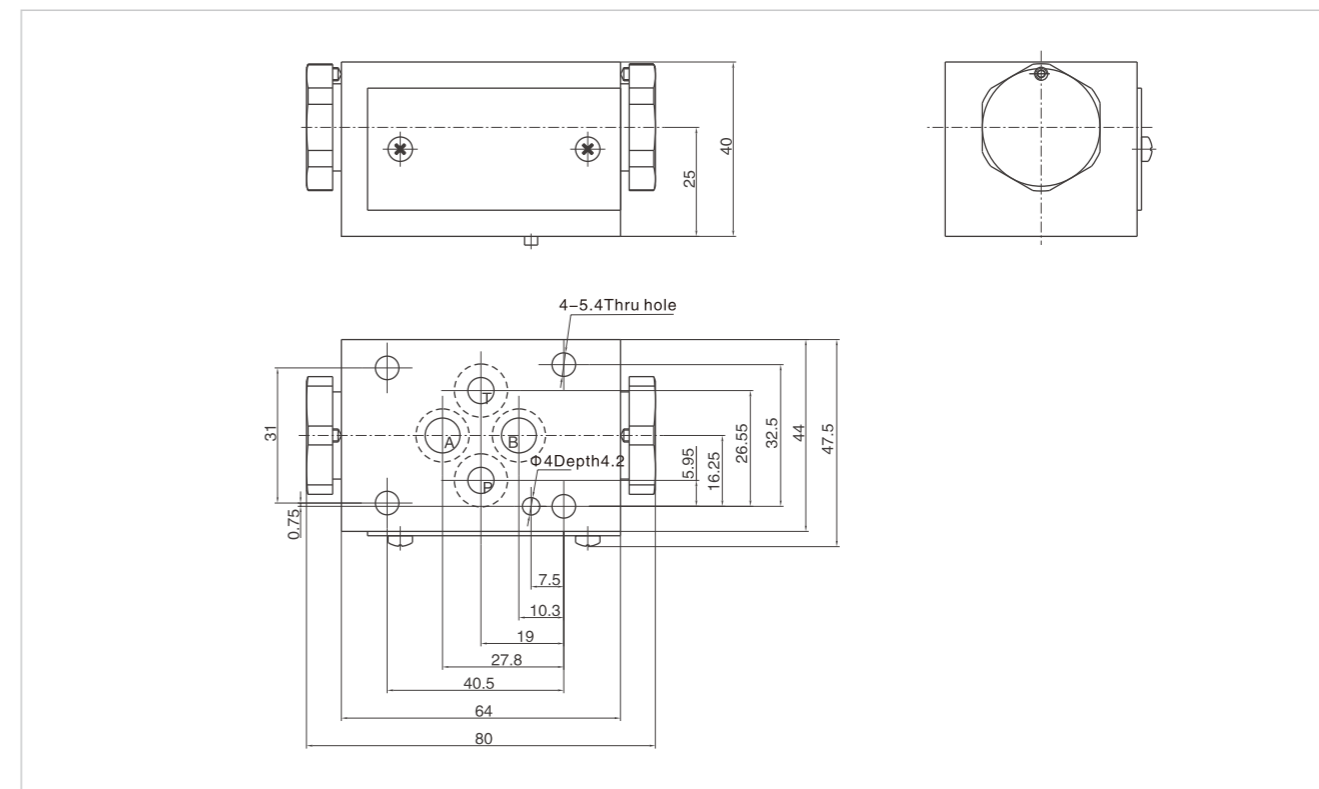


Code symbol

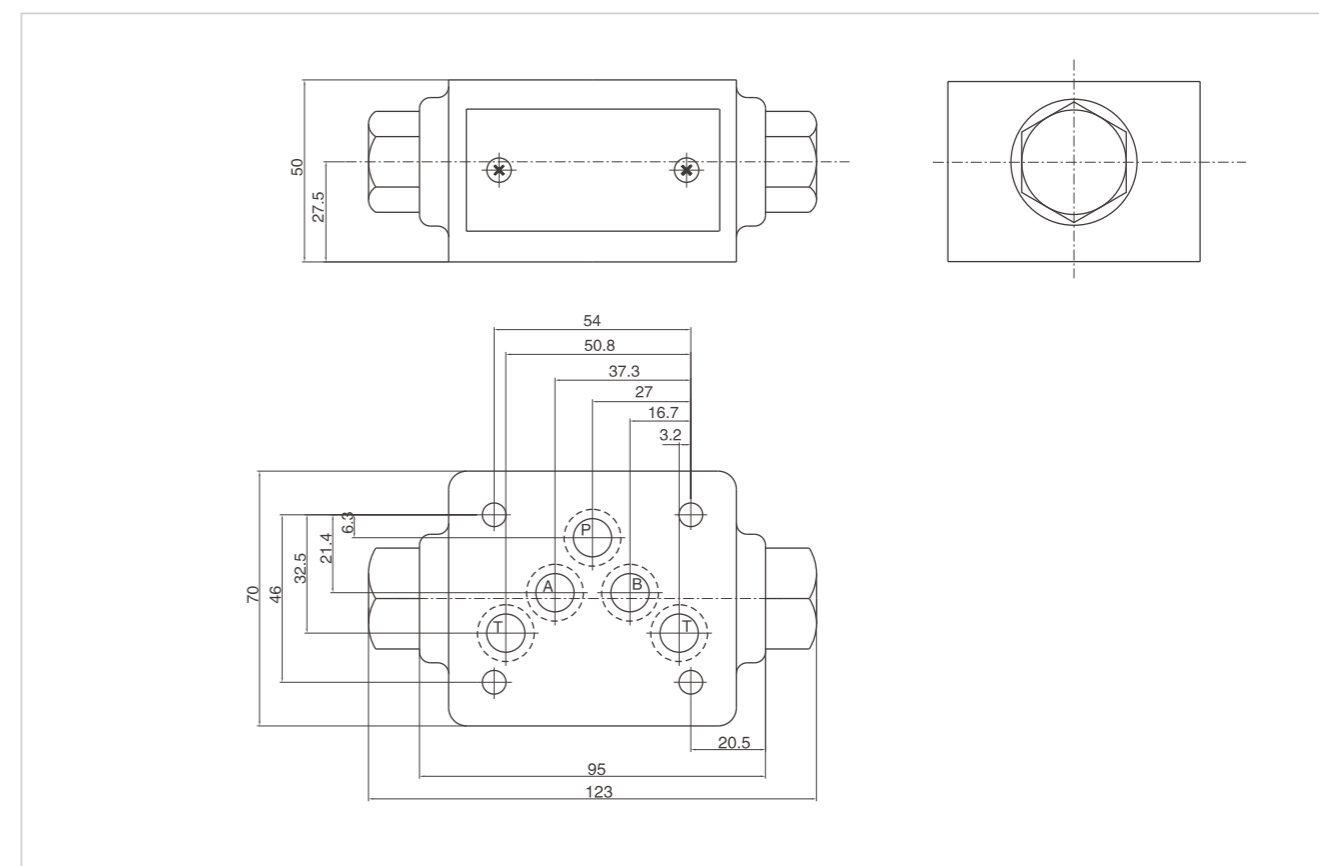


Modular Pilot-operated Check Valve

02 External dimensions

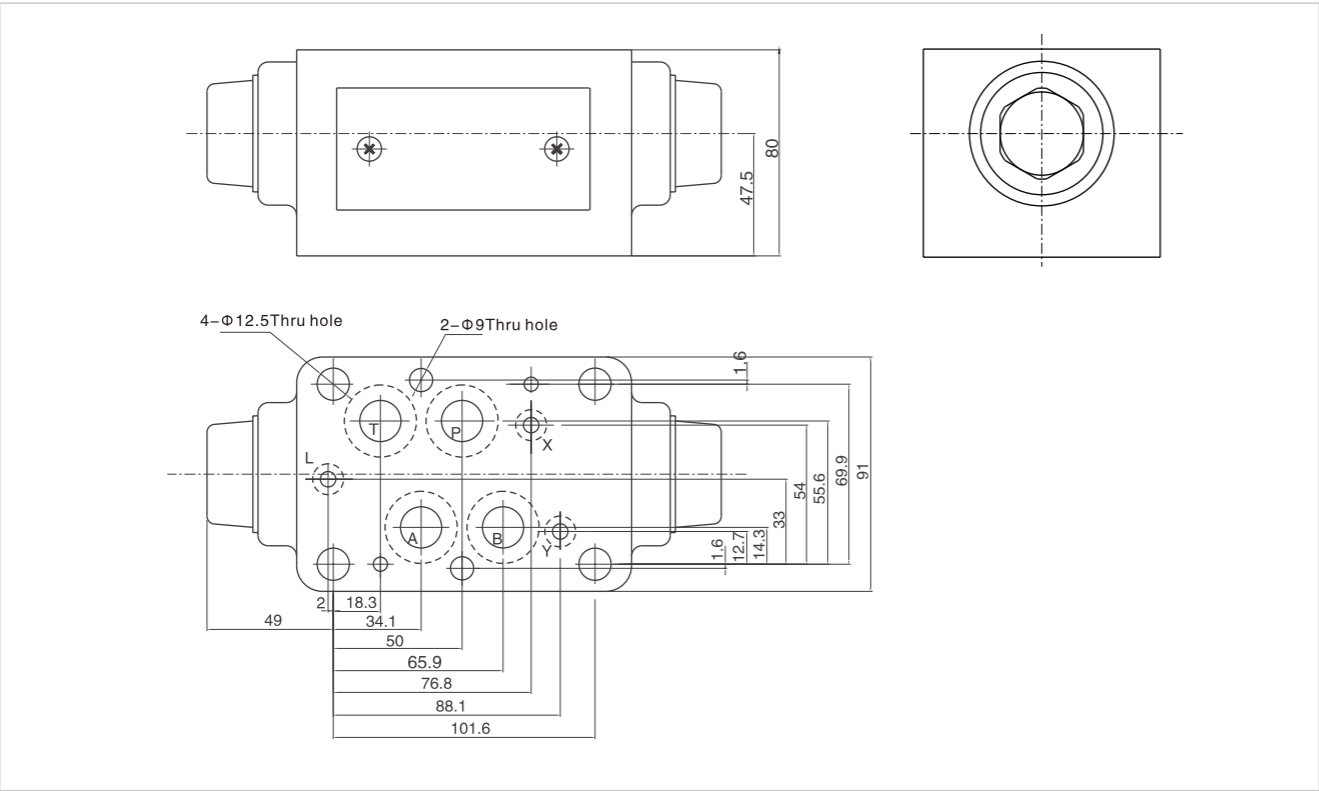


03 External dimensions



Modular Pilot-operated Check Valve

04 External dimensions



D.11.3

Solenoid Valve With Hand Control

Technical data

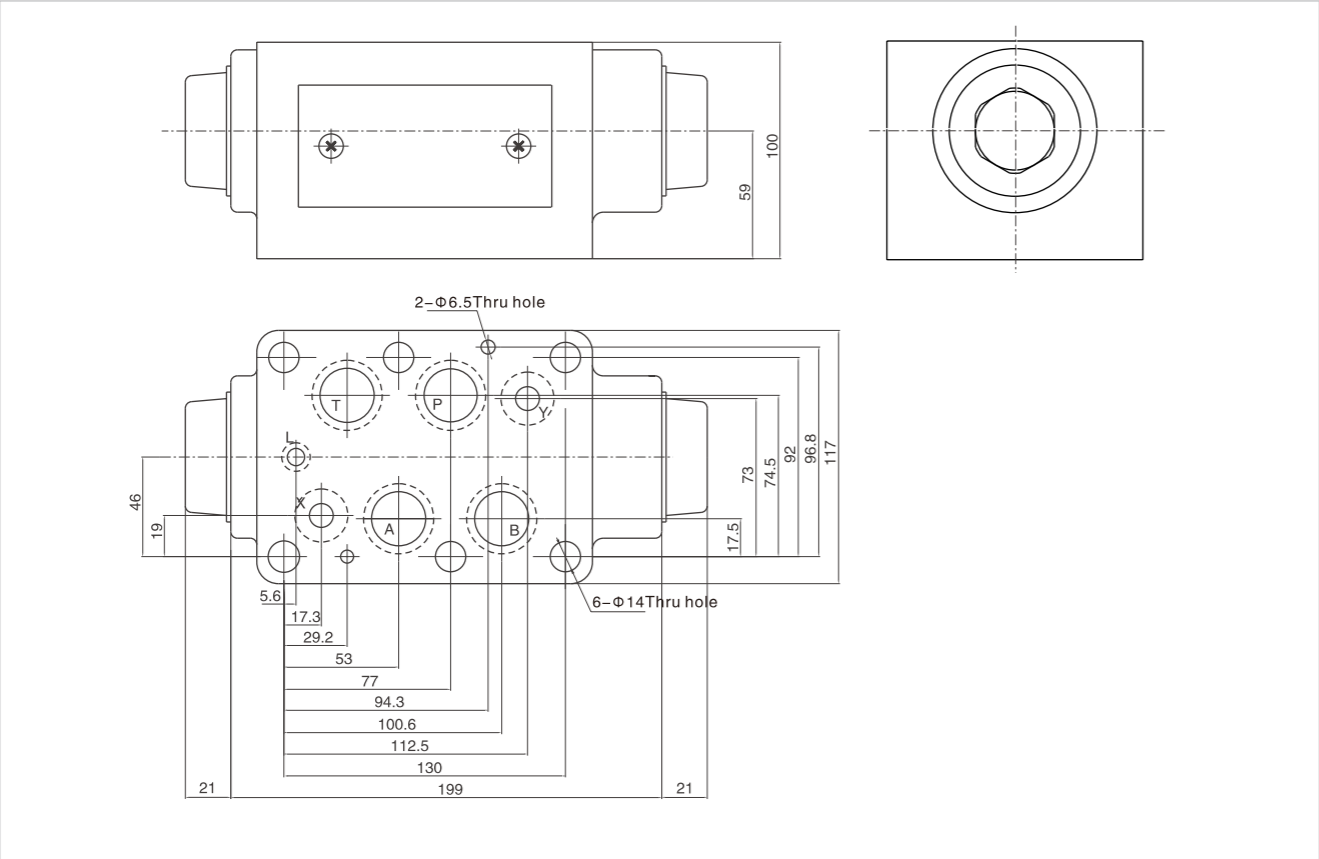


Model		02	03
Pressure range (MPa)	Oil port P, A, B	35	31.5
	Oil port T	10	
Max flow rate(L/min)		80	120
Installation	Any, recommended horizontal installation		
Working fluid	Mineral hydraulic oil; phosphate ester hydraulic oil		
Fluid temp (°C)	-20~70		
Fluid viscosity (mm ² /s)	2.8~100		
Working voltage (V)	DC	12	24
	AC	110/50Hz	220/50Hz
Protection grade	IP65		
Cleanliness	NAS1638 Class 9, recommended filtration precision Min β ₁₀ ≥ 75 ₀		

FWS can work as standard solenoid directional valve, also can control the spool movement with hand level on power-off condition.

D.12.1

06 External dimensions



Model description

