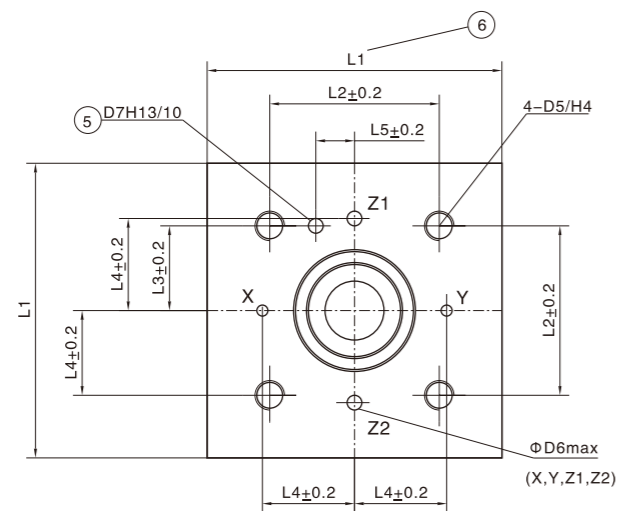
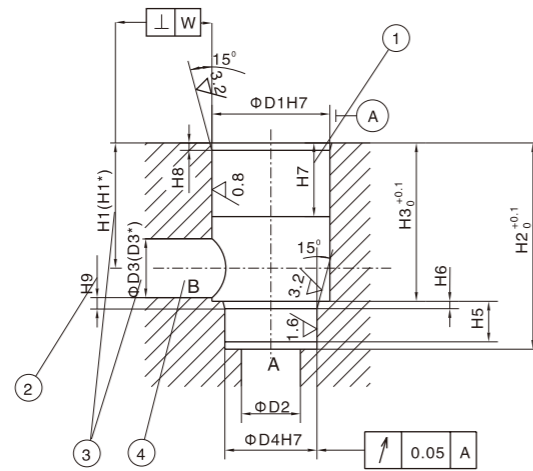


## 2-way Cartridge Valve (Direction Function)

### Dimension



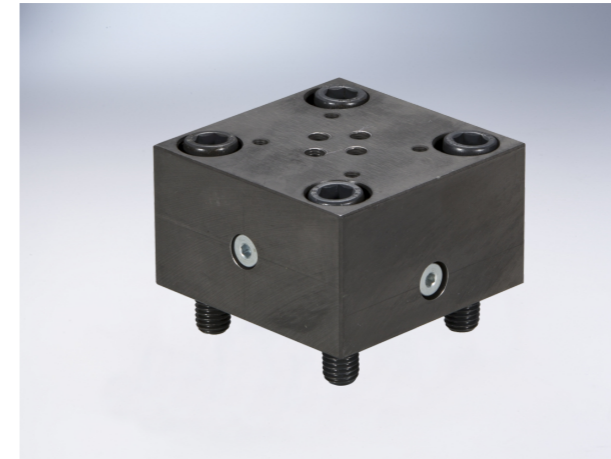
1. depth of fit
2. Reference size
3. Due to the use of a bore with  $\Phi D3^*$ , port B protrudes over the upper limit of the area intended in ISO 7368. This is, however, possible due to the sealing concept and reduces the pressure loss during flow through the valve. Thus, we recommend a bore with  $\Phi D3$ .
4. Port B can be positioned around the central axis of port A. However, it must be observed that the mounting bores and the control bores are not damaged.
5. Bore for locating pin
6. 80 mm only with control cover for directional valve set-up NG16 (axis X-Y bores)

规格	$\Phi D1H7$	$\Phi D2H7$	$\Phi D3H7$	( $\Phi D3^*$ )	$\Phi D4$	$\Phi D5$	$\Phi D6H7$	$\Phi D7$	H1	(H1*)	H2	H3
16	32	16	16	25	25	M8	4	4	34	29.5	56	43
25	45	25	25	32	34	M12	6	6	44	40.5	72	58
32	60	32	32	40	45	M16	8	6	52	48	85	70
40	75	40	40	50	55	M20	10	6	64	59	105	87
50	90	50	50	63	68	M20	10	8	72	65.5	122	100
63	120	63	63	80	90	M30	12	8	95	86.5	155	130

规格	H4	H5	H6	H7	H8	H9	L1	L2	L3	L4	L5	W
16	20	11	2	20	2	0.5	65/80	46	23	25	10.5	0.05
25	25	12	2.5	30	2.5	1	85	58	29	33	16	0.05
32	35	13	2.5	30	2.5	1.5	102	70	35	41	17	0.1
40	45	15	3	30	3	2.5	125	85	42.5	50	23	0.1
50	45	17	3	35	4	2.5	140	100	50	58	30	0.1
63	65	20	4	40	4	3	180	125	62.5	75	38	0.2

## Coverplate(Direction Function)

### Technical data



Size	16	25	32	40	50	63
Max working pressure (MPa)	31.5					
Working fluid (°C)	Mineral hydraulic oil; phosphate ester hydraulic oil					
Fluid temp (mm <sup>2</sup> /s)	-20~70					
Cleanliness	-2.8~500					
	NAS1638 Class 9, recommended filtration precision Min $\beta \geq 75$ .					

HYLFA is control the logic valve on/off. Different coverplates can realize diverse flow rates and direction of the hydraulic fluid.

### Model description

HYLFA - \* - \* - \* / 50 \*

Coverplate ( direction function )

Remark

Serial number

Seal material omit NBR V FPM

Specification  
16 DN16  
25 DN25  
32 DN32  
40 DN40  
50 DN50  
63 DN63

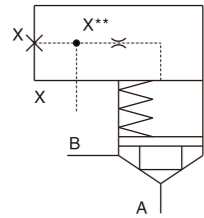
Model Refer to code details

Control Cover Type Hylfa

Model description

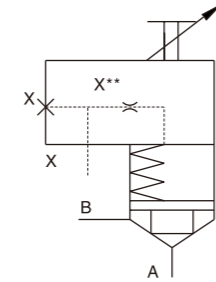
LFA...D.../F

Control cover with remote control port  
Size:16-63



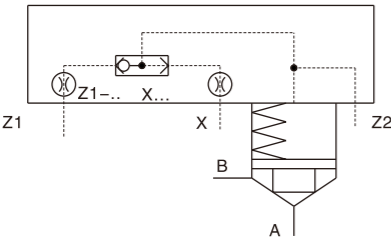
LFA...H2.../F

Control cover with stroke limitation and remote control port  
Size:16-63



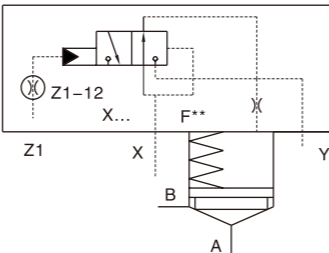
LFA...G.../...

Control cover with integrated shuttle valve  
Size:16-63



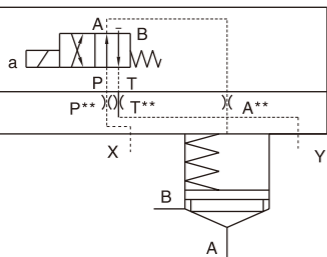
LFA...R.../...

Control cover with integrated pilot operated pilot control valve (directional seat valve)  
Size:16-63



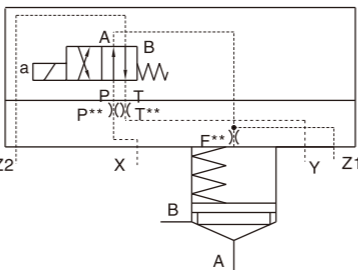
LFA...WEA.../...

Control cover for set-up of a directional valve  
Size:16-63



LFA...WEA8-60/...

Control cover for set-up of a directional valve; additional control port  
Size:16-63

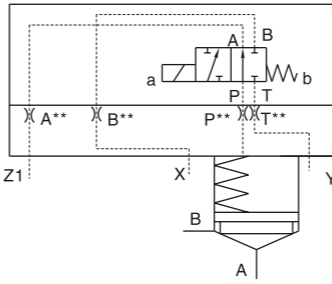


Control Cover Type Hylfa

Model description

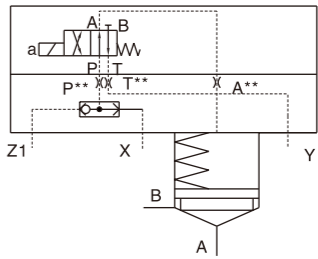
LFA...WEA9-60/...

Control cover for set-up of a directional spool valve as check valve circuit  
Size:16-63



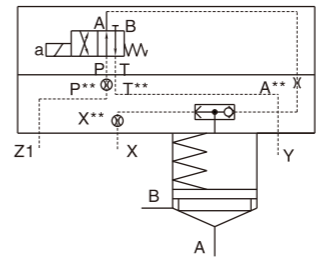
LFA...GWA.../...

Control cover for set-up of a directional spool valve or seat valve, with integrated shuttle valve  
Size:16-63



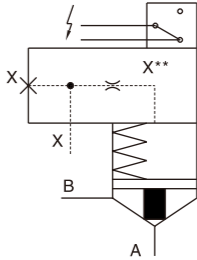
LFA...KWA.../...

Control cover with shuttle valve and for set-up of a directional valve (check valve circuit)  
Size:16-63



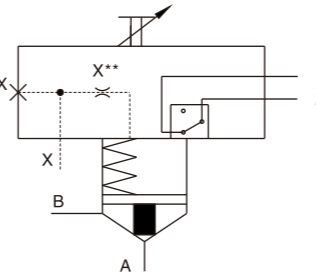
LFA...E60/...DQ.G24F

Control cover with electric close position monitoring, incl. installation kit  
Size:16-63



LFA...EH2-60/...DQ.G24F

Control cover with electric close position and stroke limitation monitoring, incl. installation kit  
Size:16-63



LFA...EWA60/...DQOG24

Control cover with electric monitoring of the close position, for mounting a directional spool valve  
Size:16-63

