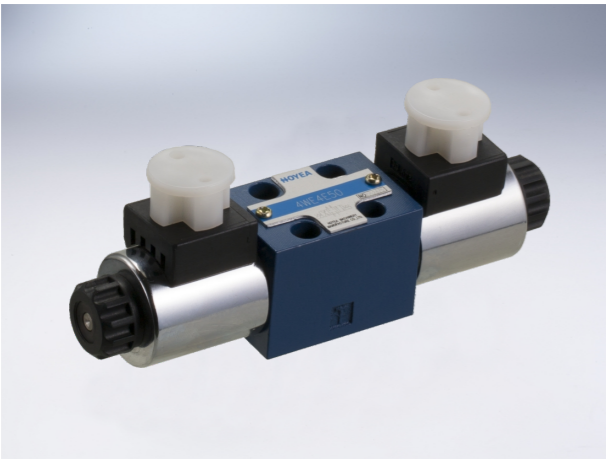


DN04 Solenoid Valve

Technical specification



Specification	04	
Max. working pressure (MPa)	Port P, A, B	25
	Port T	10
Max. Flow (L/min)	25	
Working fluid	Mineral oil; phosphate-ester	
Fluid temp. (°C)	-20~70	
Viscosity (mm ² /s)	2.8~100	
Working voltage (V)	DC 12	DC 24
Insulation grade	IP55	
Cleanliness	The maximum allowable cleanliness of the oil should be according to 9th degree of Standard NAS1638. It is suggested that the minimum filter rating should be $\beta_{10} \geq 75$.	

Solenoid valve is controlled by the solenoid to move the spool, so as to control the oil flow direction. It could be used in hydraulic system directly, control the oil on/off; also could be used as pilot valve, to control other valves.

Model description

4 4Port	4	HYWE4	-	*	-	*	*	*	/	*	*	50	*	Remarks
DN04 Solenoid valve	Serial number													
Spool type Details refer to symbol list	Seal material Omit NBR Seals V FPM Seals													
Voltage D12 DC12V D24 DC24V	Omit without damping 08 Φ 0.8 Damping 10 Φ 1.0 Damping 12 Φ 1.2 Damping													
Z5L Square connector with light Z6 Wire box type	Omit without hand emergency N9 with concealed hand emergency													

DN04 Solenoid Valve

Code symbol

Spring return

3C2		2B2B		2B2BL		2B2	
3C3		2B3B		2B3BL		2B3	
3C4		2B4B		2B4BL		2B4L	
3C6		2B6B		2B6BL		2B6L	

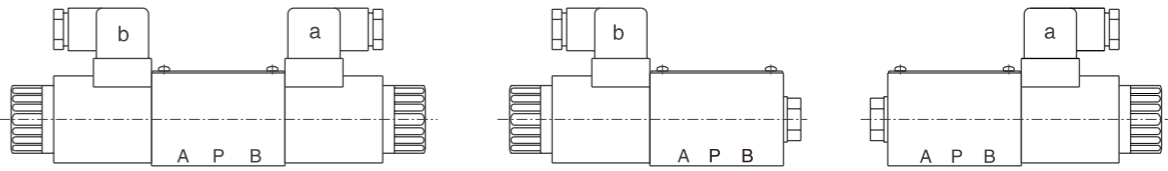
With detent

	2D2
	2D3

No spring return and no detent mechanical positioning

	2N2
	2N3

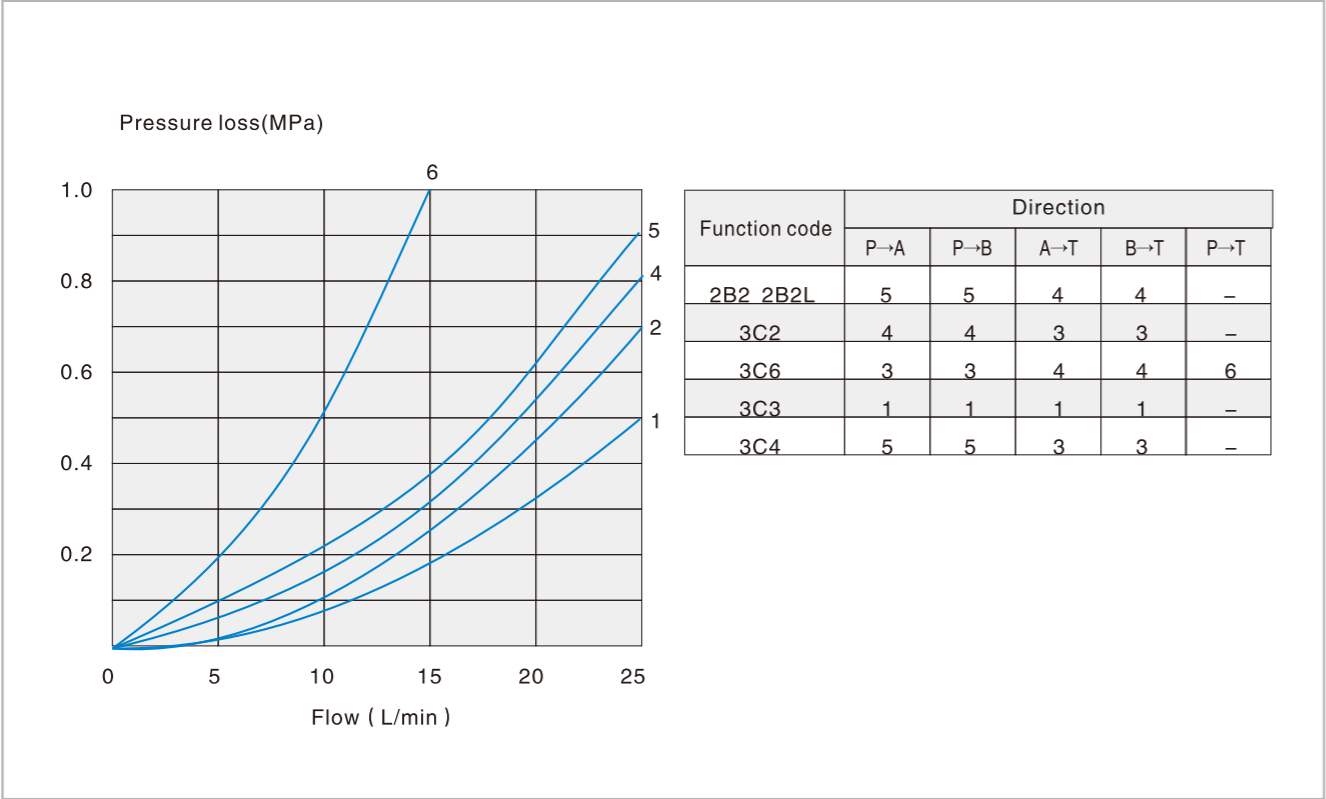
Name of solenoid



1. a When movement a, P→A B→T
2. b When movement b, P→B A→T
3. Oil flow in the opposite direction with the above-mentioned movement for 3C5、3C6symbol Valve.

DN04 Solenoid Valve

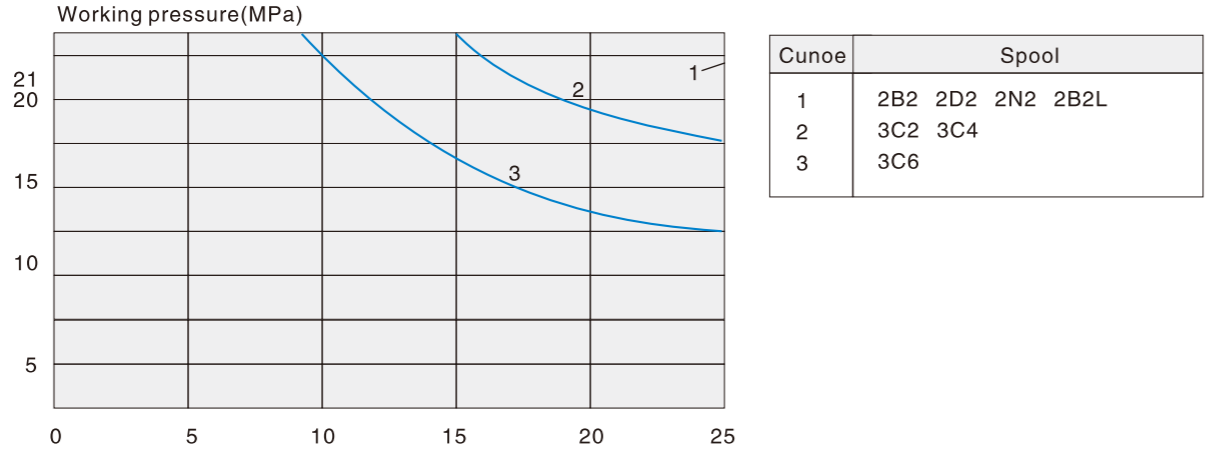
Specification Performance curve (Measured at $v=41\text{mm}^2/\text{s}$ and $t=50^\circ\text{C}$)



F.2.3

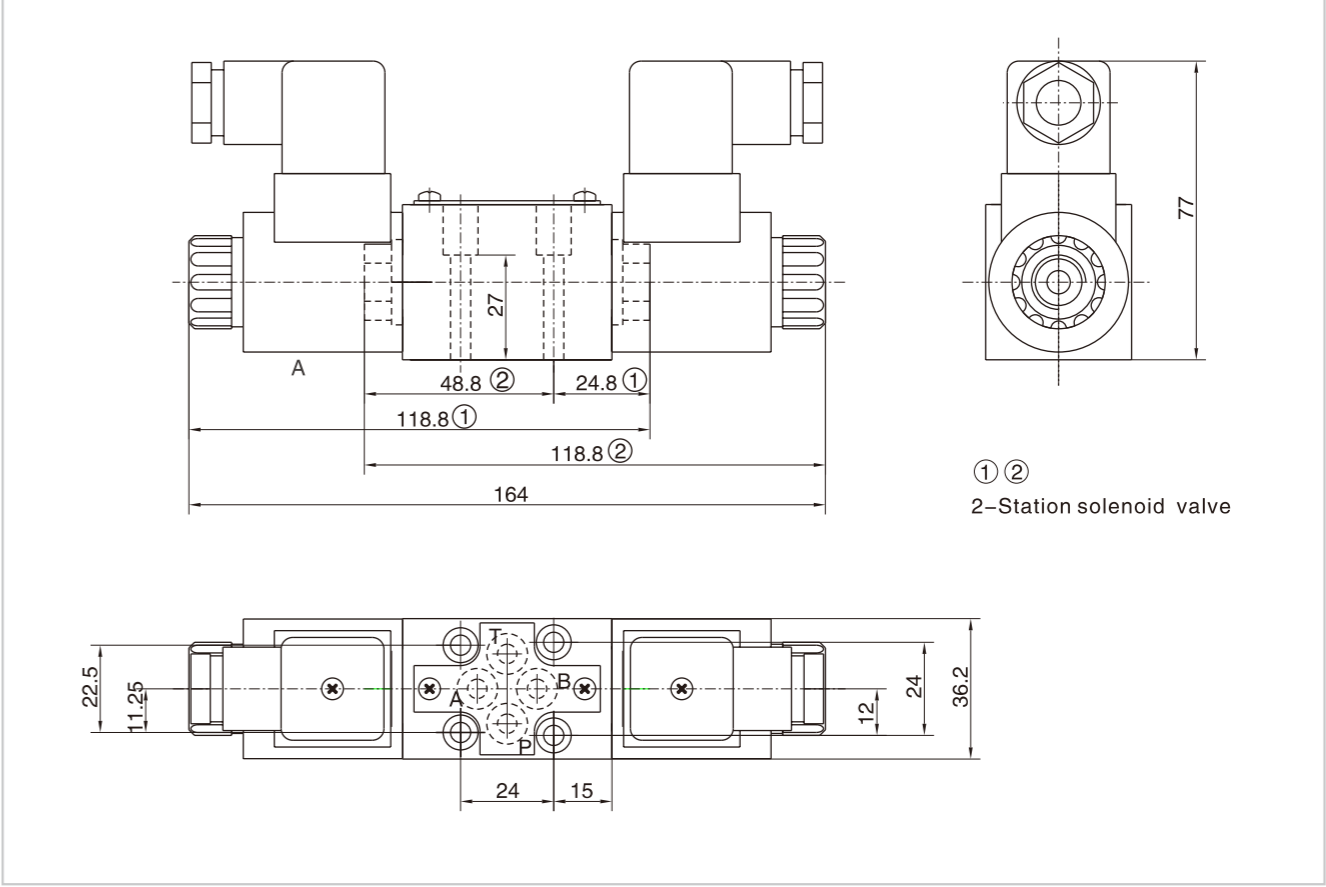
Specification Working limits

With regard to the four-way valve, the normal flow data as shown is get from the regular use of two directions of the flow (e.g.P to A,and simultaneous return flow from B to T). See tables. If only one flow direction is needed, for example: When a four port valve which is closed up port A or port B, used as a three-way valve, the Maximum flow may be very small in the serious condition. (The working limits for directional valves have determined by using solenoids at their operating temperature, 10% under voltage and with no pre-loading of the tank)



DN04 Solenoid Valve

External dimensions



F.2.4

Size of subplate

