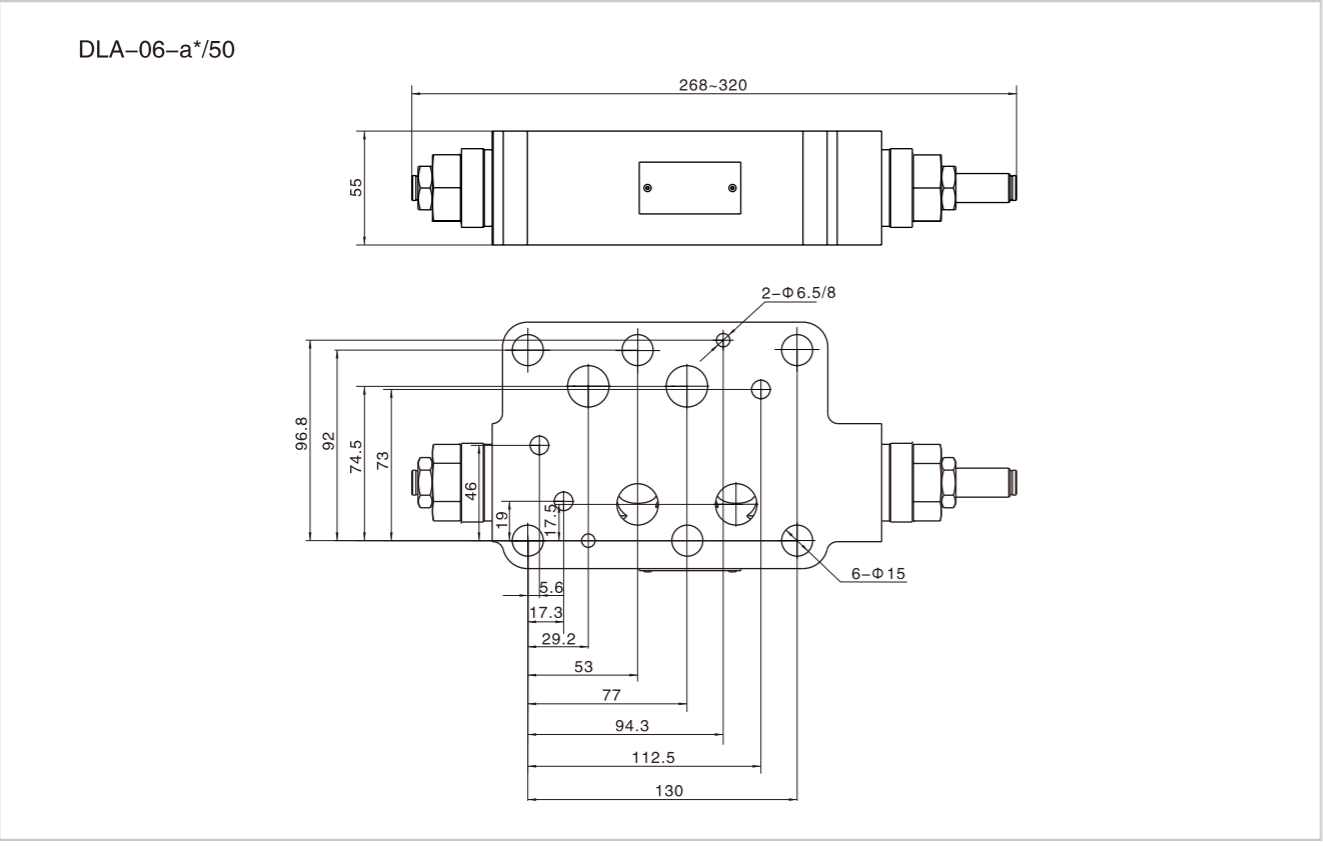
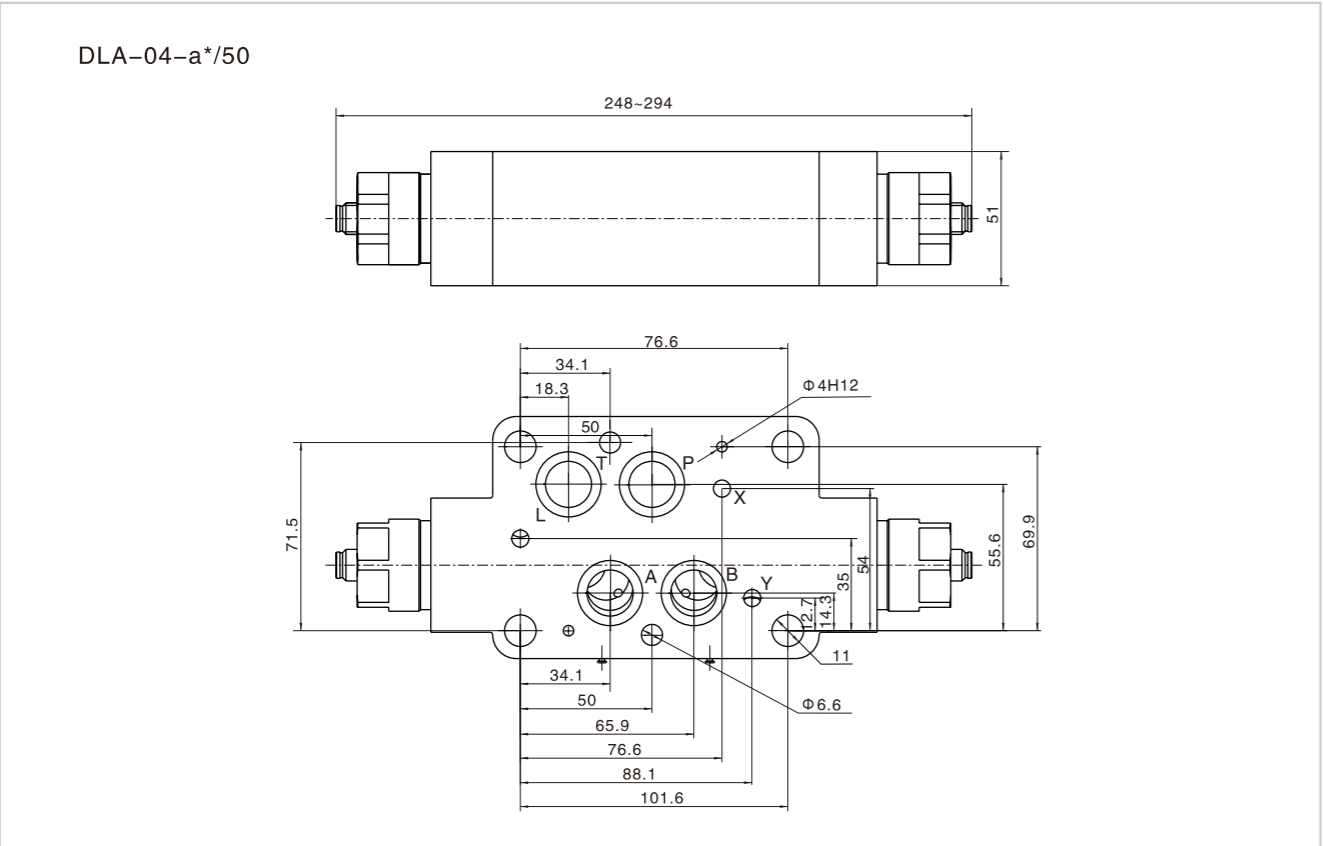


Modular Flow Control Valve

Dimension



Flow Control Valve

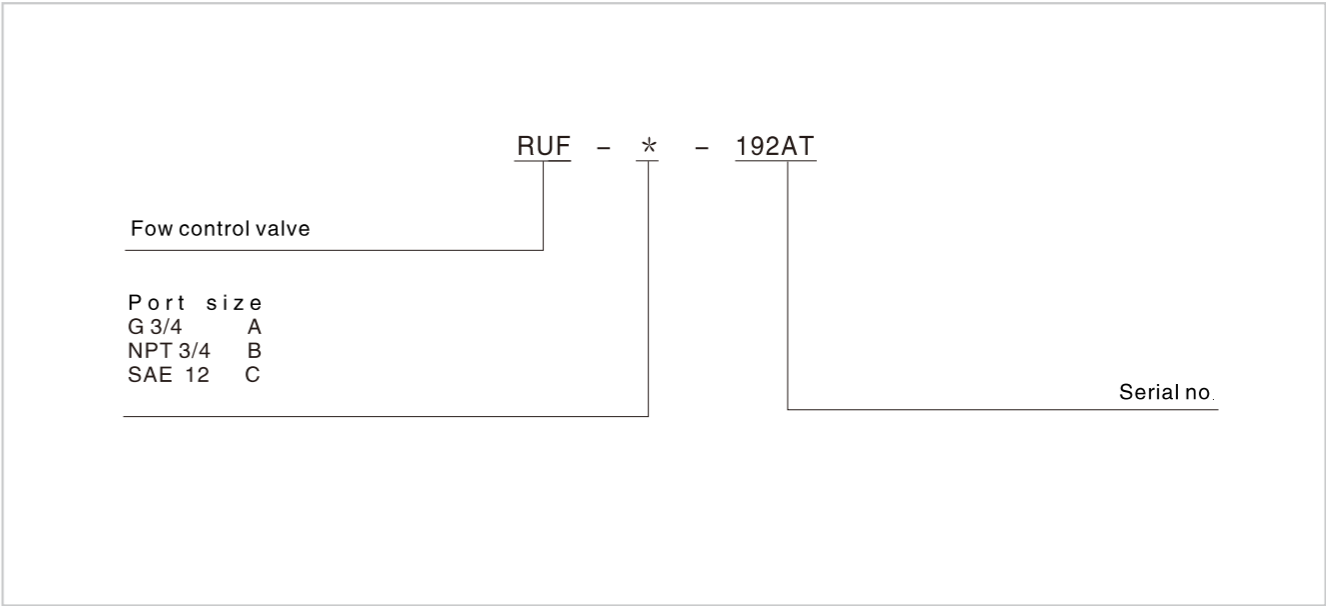
Technical data



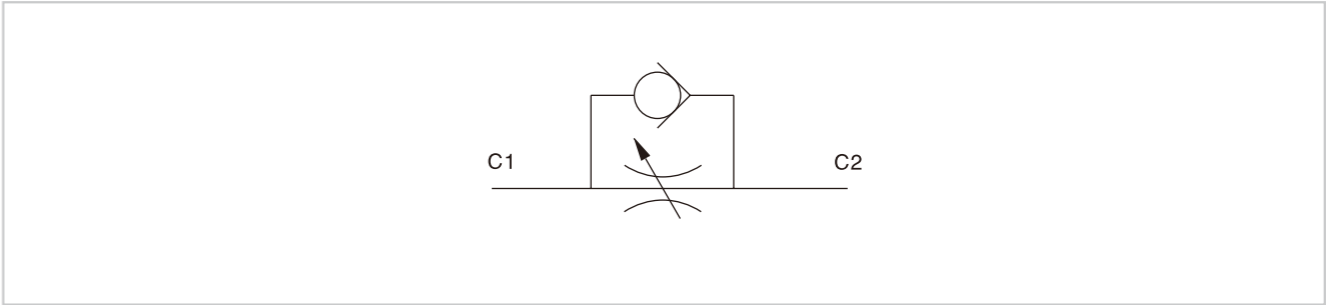
Model	RUF-X 192AT
Rated pressure (MPa)	31.5
Min opening pressure (MPa)	2
Max flow rate (L/min)	175
Installation	Any
Working fluid	Mineral oil, Phosphate
Storage temp (°C)	-20~80
Working temp (°C)	-10~60
Cleanliness	NAS1638 Class 9, recommended filtration precision Min $\beta_{10} \geq 75$.

Application:
pipeline type flow control valve is made of a restrictive valve and a check valve, used to adjust the flow rate.

Ordering code

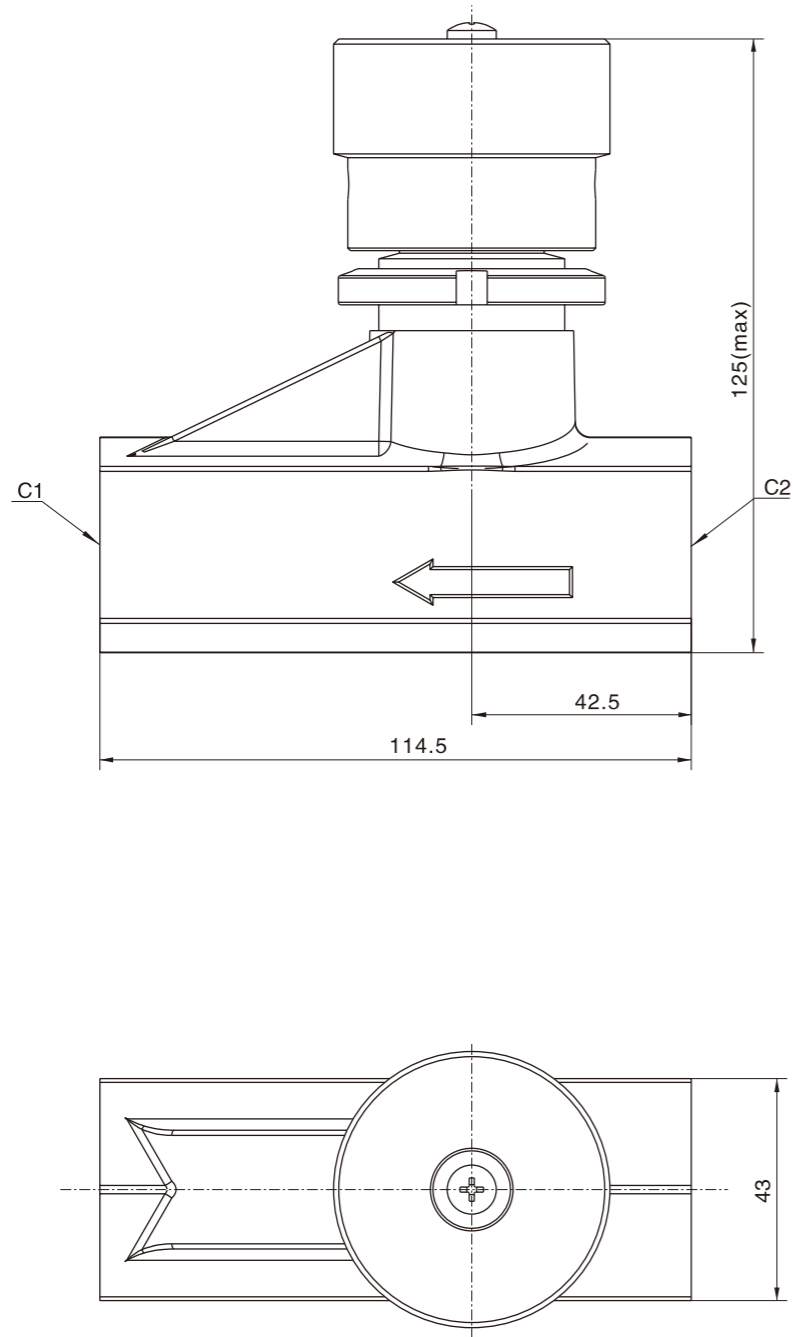


Hydraulic symbol



Fow Control Valve

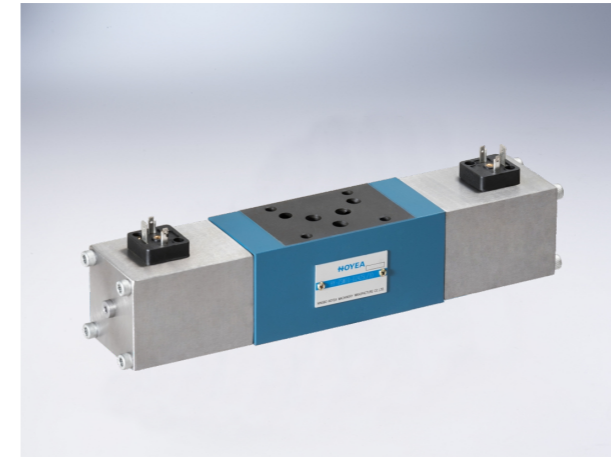
Dimension



2-position 2-way subplate/modular leak-free direct-operated solenoid valve



Technical parameter



Solenoid controls the spool open/closed, the fluid can bi-directionally flows or cut-off. Normally closed.

Technical parameter (Please consult factory if your application is out of below range)

Model	HY-AS6, HY-ZS6, 10	
Mounting	Free, recommended for horizontal installing	
Storage temperature (°C)	-20 ~ +60	
Working temperature (°C)	-20 ~ +50	
Weight (kg)	1.8(ASP6、AS6) 2.8(ZSW6) 7(ZSW10)	

Hydraulic parameter

Max working pressure (MPa)	35	
Specifications	NG6	NG10
Max flow rate (L/min)		
Working fluid	Mineral hydraulic oil, phosphate	
Fluid temp range (°C)	-20~+70	
Viscosity range (mm ² /s)	12~320	
Minimum fluid cleanliness	Maximum permissible degree of pressure fluid contamination to NAS 1638 to class 9 recommended filter $\beta_{10} \geq 75$.	

Hydraulic symbol

Voltage type	Direct current	
Adaptable voltage (V)	24	
Allowed residue (%)	< 5	
Float Voltage step-down (%)	± 10	
IP class	IP65	