

D07 Standard Flow Parallel Circuit Manifold



O.5.1

Ordering information

HY* D07 P * 4 * / * / 10

A Aluminum 7A04 max. working pressure 20.7Mpa
D Ductile Iron45# max. working pressure 31.5Mpa

Valve Pattern 07 NS 16

Parallel Circuit Standard Flow

No. of Stations
01-08

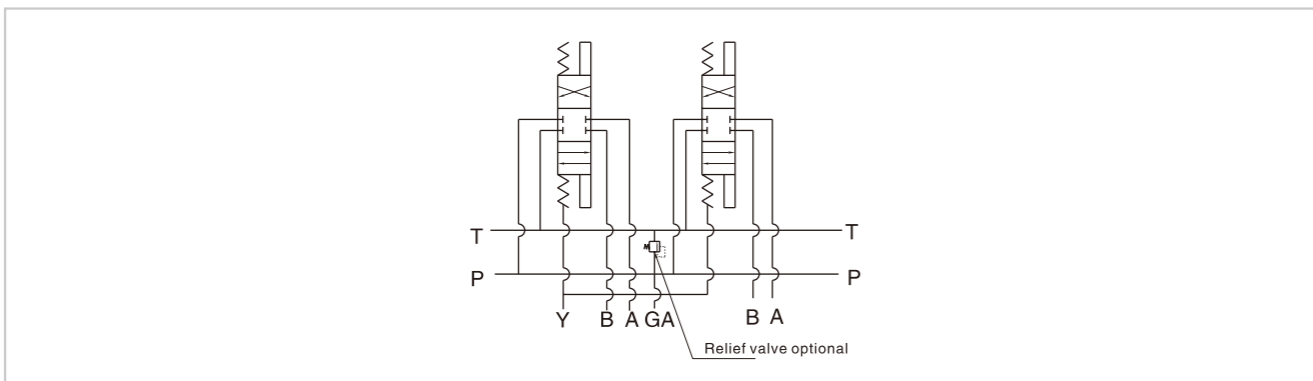
valve spacing
4 inch [101.6 mm]

Serial number

Omit	cavities not required
C	One Common cavity: C-10-2 (P in nose)
S	One Sun Cavity: T-3A (P in nose)

Port Threads	P, A, B	T	Y	GA
P NPT(Z)	0.75	1	0.38	0.25
S SAE	-12	-16	-6	-6
B BSP(G)	0.75	1	0.38	None
M M	M27x2	M33x2	M14x1.5	None

Code symbol



D07 Standard Flow Parallel Circuit Manifold

External dimensions

Model-View relationship

Relief valve cavity optional

Port code	Valve mtg	Manifold mtg
P,S	0.38-16 UNCx1.00[25]DP 0.25-20 UNCx0.75[19]DP	0.38-16 UNCx 0.75[19]DP
B,M	M10 ISO 6Hx1.00[25]DP M6 ISO 6Hx0.75[19]DP	M10 ISO 6Hx 0.75[19]DP

O.5.2

No. of stations	* 01	02	03	04	05	06	07	08
"A" length inch (mm)	4.00 [101.6]	8.00 [203.2]	12.00 [304.8]	16.00 [406.4]	20.00 [508.0]	24.00 [609.6]	28.00 [711.2]	32.00 [812.8]
apx. Weight alum (KG)	6 [3]	14 [6]	22 [10]	30 [14]	38 [17]	46 [21]	52 [24]	60 [27]
apx. Weight ferrous (KG)	24 [11]	46 [21]	69 [31]	90 [41]	114 [52]	135 [61]	158 [72]	180 [82]

* 1 Length of 01 station with relief cavity is 5.5 (139.7) . Gauge port not available on 01 station