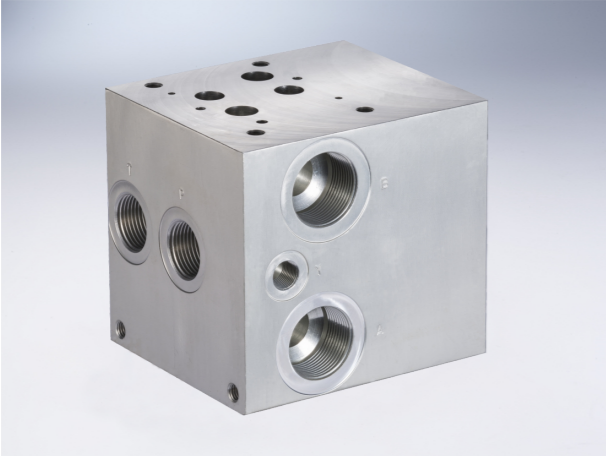


D08 Standard Flow Parallel Manifold

D08 Standard Flow Parallel Manifold

External dimensions



Ordering information

HY* D08 P * 5 * / * / 10

Serial number

A Aluminum 7A04 max. working pressure 20.7Mpa
D Ductile Iron 45# max. working pressure 31.5Mpa

Valve Pattern 08 NS 25

Parallel Circuit Standard Flow

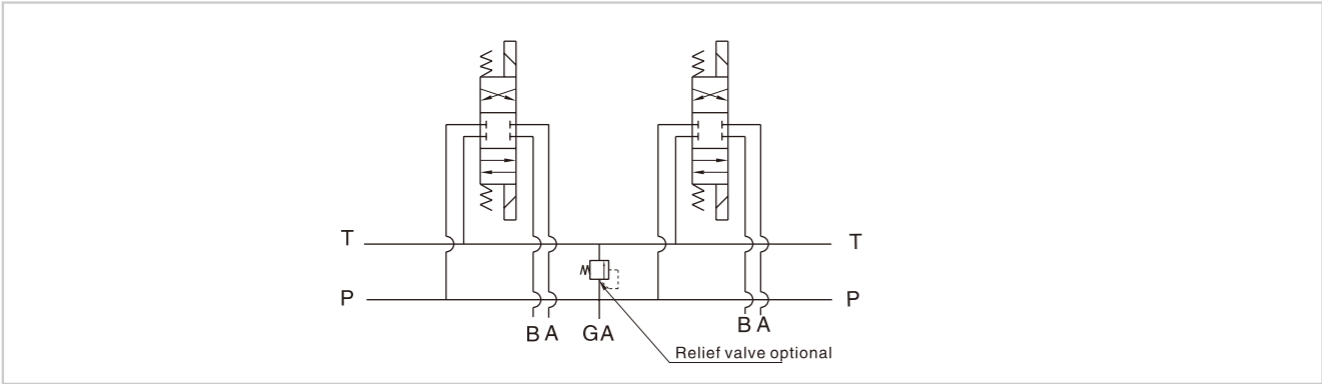
No. of Stations 01-07

Valve Spacing 5.25 inch [133.4 mm]

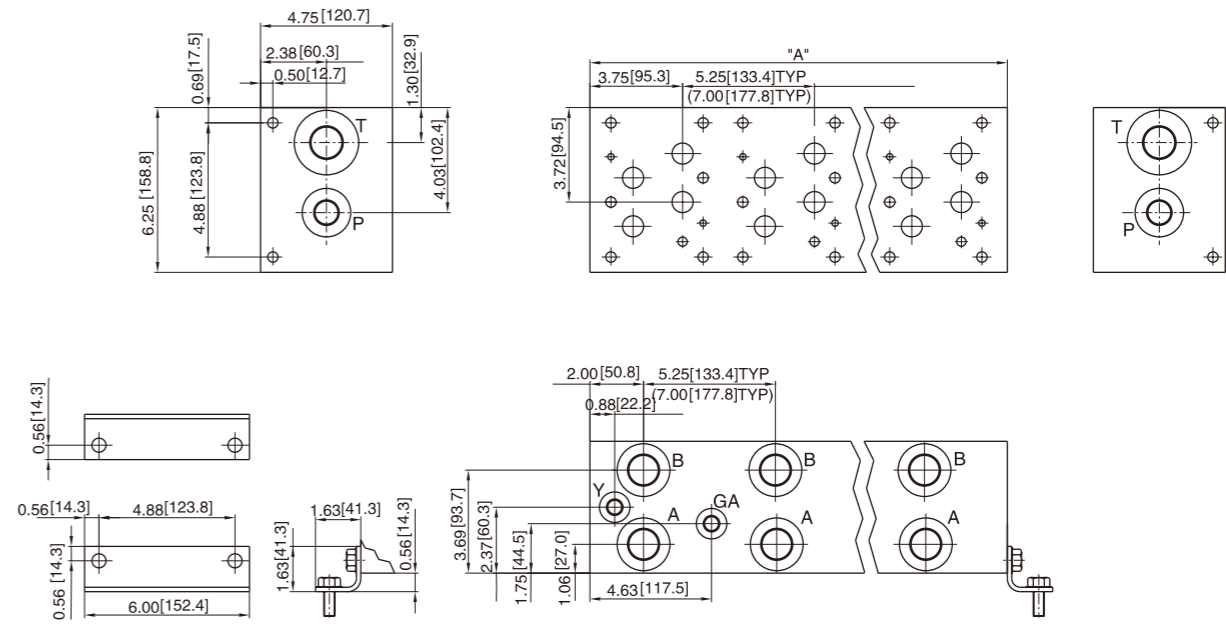
Omit	cavities not required
C	One Common cavity: C-10-2 (P in nose)
S	One Sun Cavity: T-3A (P in nose)

Port Threads	P, A, B	T	Y	GA
P NPT(Z)	1	1.25	0.38	0.25
S SAE	-16	-20	-8	-6
B BSP(G)	1	1.25	0.38	None
M M	M33x2	M42x2	M14x1.5	None

Code symbol



Relief valve cavity optional



Port code	Valve mtg	Manifold mtg
P,S	0.50-13 UNCx1.19[30]DP	0.50-13 UNCx 0.88[22.3]DP
B,M	M12 ISO 6Hx1.19[30]DP	M12 ISO 6Hx 0.88[22.3]DP

No. of stations	* 01	02	03	04	05	06	07
"A" length inch (mm)	5.25 [133.4]	10.50 [266.7]	15.75 [400.1]	21.00 [533.4]	26.25 [666.8]	31.50 [800.1]	36.75 [933.5]
apx. Weight alum (KG)	12 [5]	24 [11]	35 [16]	49 [22]	61 [28]	75 [34]	89 [40]
apx. Weight ferrous (KG)	45 [20]	90 [41]	136 [62]	181 [82]	226 [103]	271 [123]	356 [162]

* Gauge port not available on 01 station