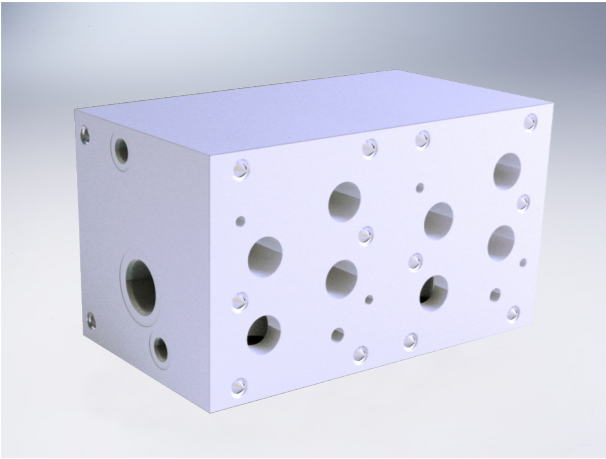


# D08 Series Circuit Manifold

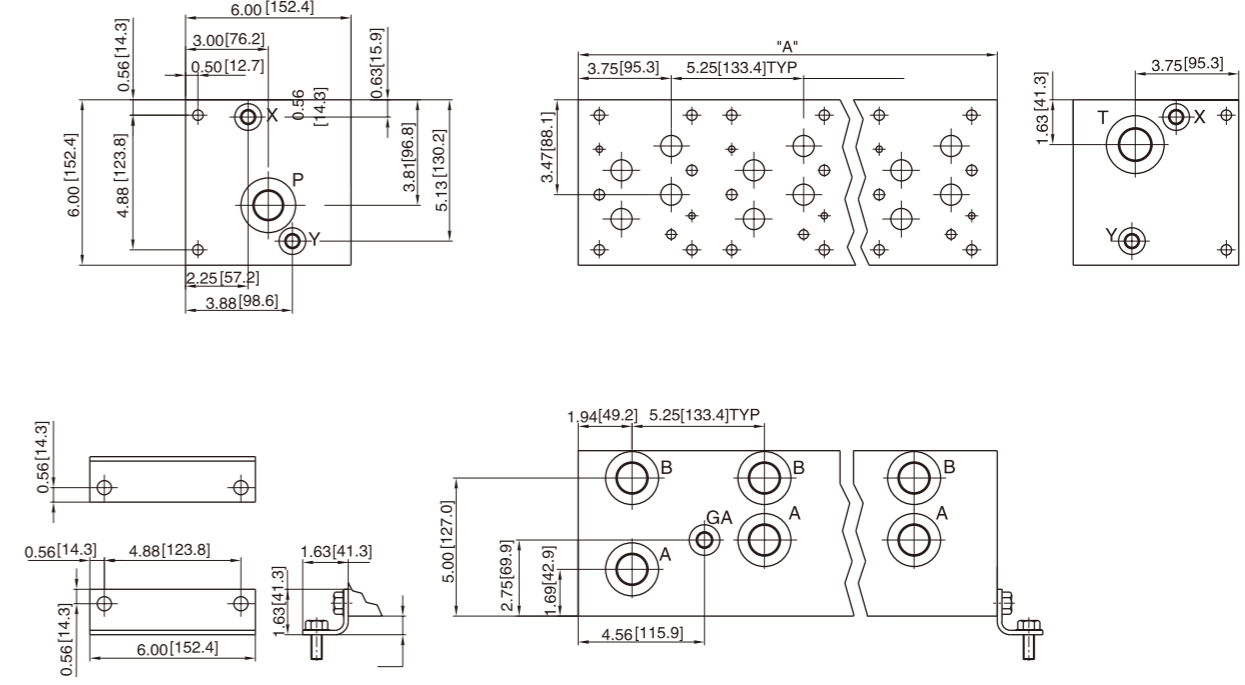
# D08 Series Circuit Manifold



## External dimensions



Relief valve cavity optional



Port code	Valve mounting thread	Manifold mounting thread
P, S	0.50-13 UNCx1.19[30]DP	0.50-13 UNCx 0.88[22.3]DP
B, M	M12 ISO 6Hx1.19[30]DP	M12 ISO 6Hx 0.88[22.3]DP

## Ordering information

HY\* D08 S \* \* \* / \* / 10

A Aluminum 7A04 max. working pressure 20.7Mpa  
D Ductile Iron 45# max. working pressure 31.5Mpa

Valve Pattern 08 NS 25

Parallel Circuit Standard Flow

No. of Stations  
02-03

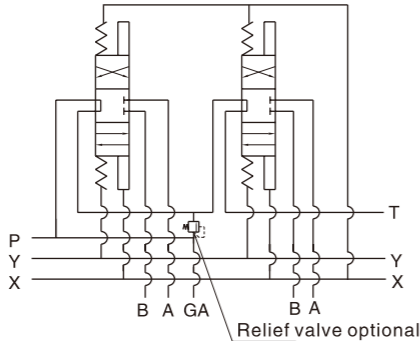
Valve Spacing  
4 inch [101.6 mm]

Serial number

Omit	cavities not required
C	One Common cavity: C-10-2 (P in nose)
S	One Sun Cavity: T-3A (P in nose)

Port Threads	P, A, B	T	Y	GA
P NPT(Z)	1	1.25	0.38	0.25
S SAE	-16	-20	-8	-6
B BSP(G)	1	1.25	0.38	None
M M	M33x2	M42x2	M14x1.5	None

## Code symbol



No. of stations	02	03
"A" length inch (mm)	10.50 [266.7]	15.75 [400.1]
apx. Weight alum (KG)	24 [11]	35 [16]
apx. Weight ferrous (KG)	90 [41]	136 [62]