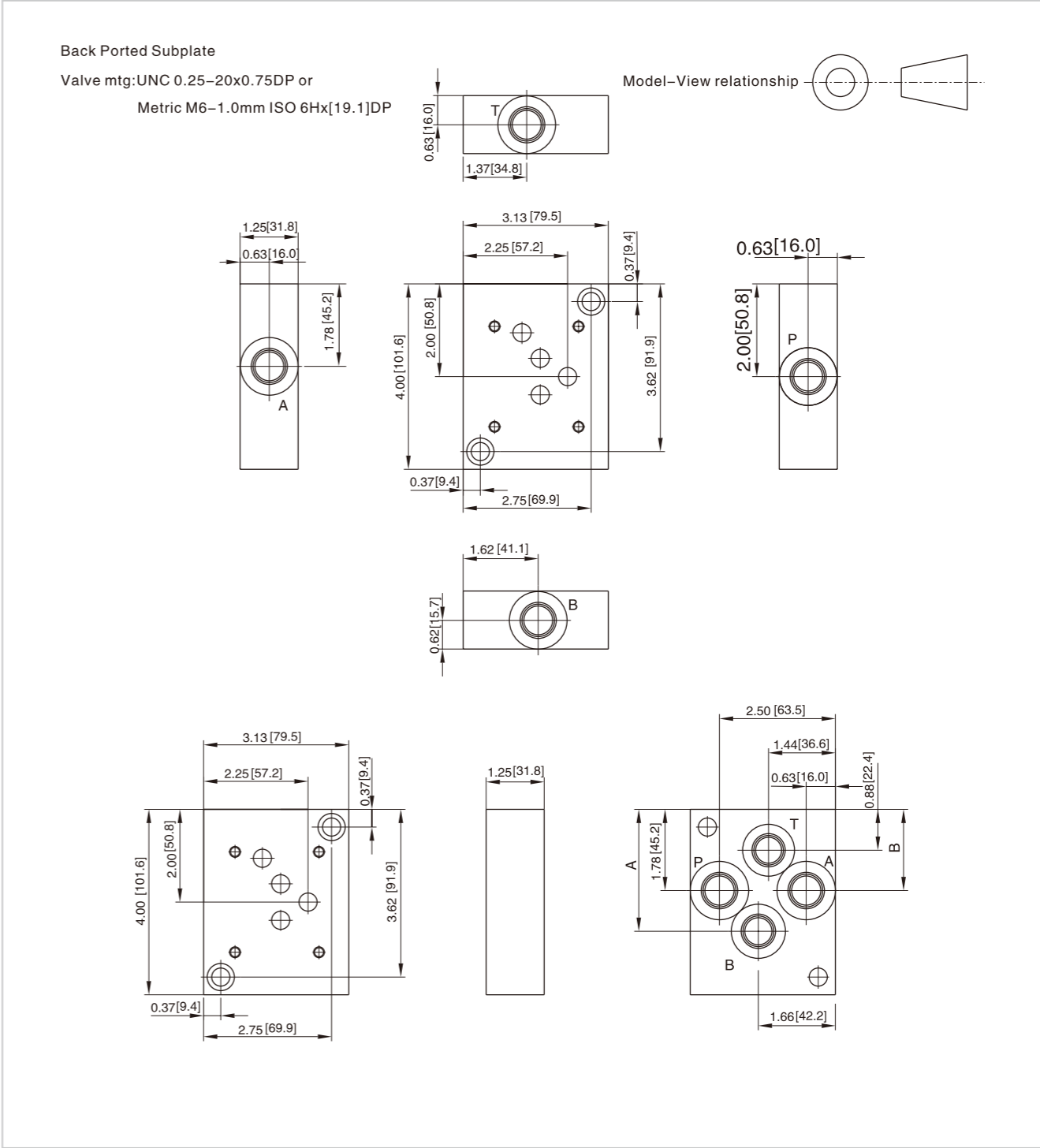
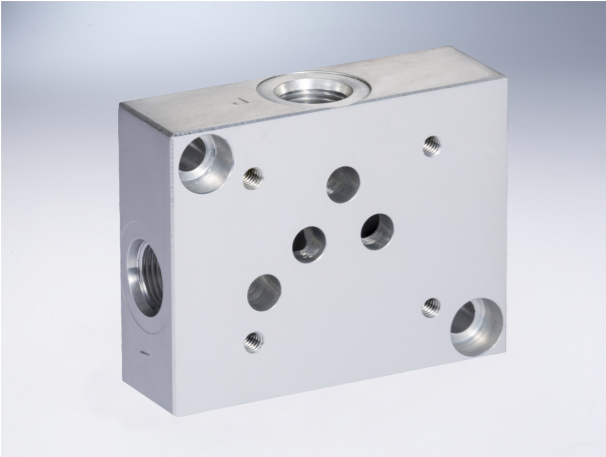


D05 Subplates

D05 Subplates

External dimensions



Ordering information

HY* D05 SP * * / 10

A Aluminum 7A04 max. working pressure 20.7Mpa
D Ductile Iron 45# max. working pressure 31.5Mpa

Serial number

Valve Pattern 05 NG 10

Subplate

Port Location
S Side ported
B Back Ported

Port Threads	
6P	3/8"NPT(Z)
8P	1/2"NPT(Z)
8S	SAE-8
8B	1/2"BSP(G)
8M	M18X1.5

Dimension	A	B
*D05SPB6P	2.63 [66.8]	1.75 [44.5]
*D05SPB8B	2.94 [74.6]	2.00 [50.8]
*D05SPB8[M,P,S,T]	2.63 [66.8]	1.75 [44.5]