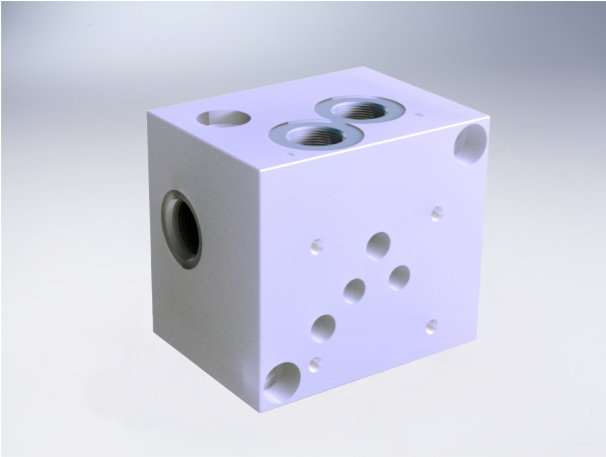


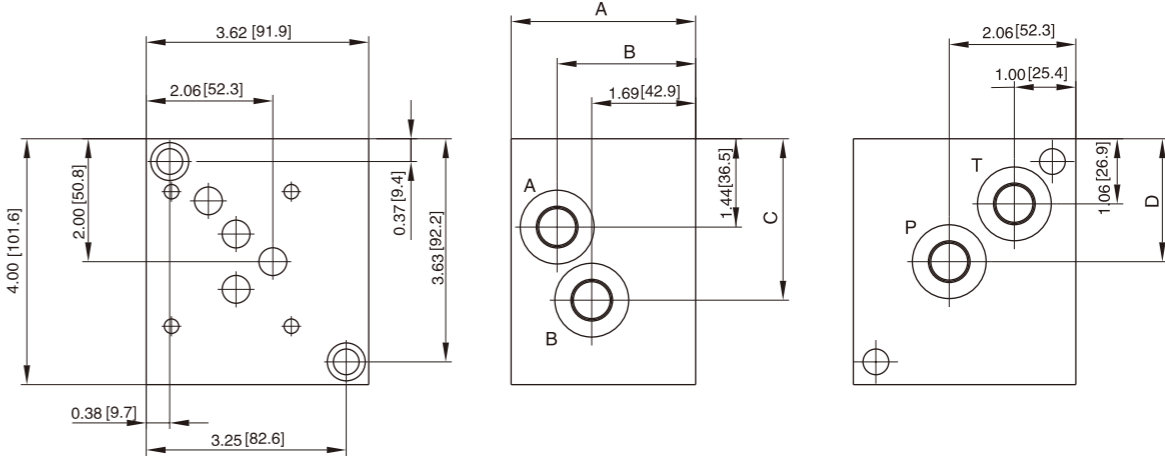
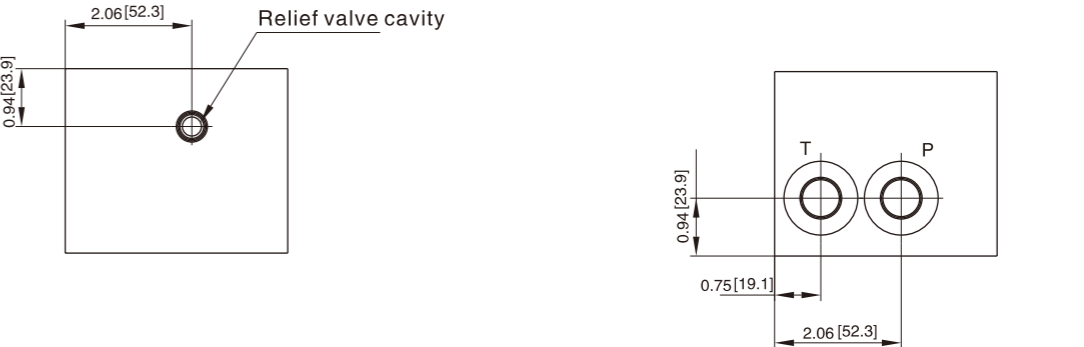
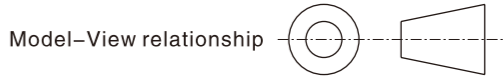
D05 Subplates With Relief Cavity

D05 Subplates With Relief Cavity

External dimensions



Dual Ported Subplate with Main Relief Cavity
 Valve mtg: UNC 0.25-20x0.75DP or
 Metric M6-1.0mm ISO 6Hx[19.1]DP



Ordering information

HY* D05 SP * * * / 10

A Aluminum 7A04 max. working pressure 20.7Mpa
 D Ductile Iron 45# max. working pressure 31.5Mpa

Valve Pattern 05 NG 10

Subplate

RV Main Relief P to T

Serial number

Port Threads	
8P	1/2"NPT(Z)
8S	SAE-8
8B	1/2"BSP(G)
8M	M18X1.5

Relief Cavity	
C	Common cavity: C-10-2 (P in nose)
S	Sun cavity: T-10A (P in nose)

Dimension	A	B	C	D
*D05SPRVC8B	3.00 [76.2]	2.25 [57.2]	2.63 [66.7]	2.00 [50.8]
*D05SPRVS8B	3.00 [76.2]	2.25 [57.2]	2.63 [66.7]	2.06 [52.4]
*D05SPRV*8[M,P,S,T]	2.50 [63.5]	1.69 [42.9]	2.56 [65.1]	2.00 [50.8]