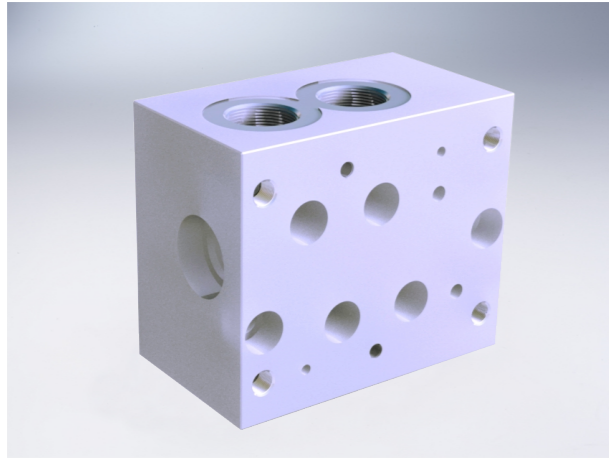


# D07 Subplates With Relief Cavity



## Ordering information

HY\* D07 SP \* \* \* / 10

A Aluminum 7A04 max. working pressure 20.7Mpa  
D Ductile Iron 45# max. working pressure 31.5Mpa

Serial number

Valve Pattern 07 NG 16

Subplate

RV Main Relief P to T

P,A,B,T Port Threads				X & Y port size
12P	3/4"NPT(Z)	16P	1"NPT(Z)	1/4"NPT(Z)
12S	SAE-12	16S	SAE-16	SAE-6
12B	3/4"BSP(G)	16B	1"BSP(G)	1/4"BSP(G)
12M	M27X2	16M	M33X2	M14X1.5

Relief Cavity	
C	C-10-2 w/12* ports C-16-2 w/16* ports
S	T-3A w/12* ports T-16A w/16* ports

# D07 Subplates With Relief Cavity

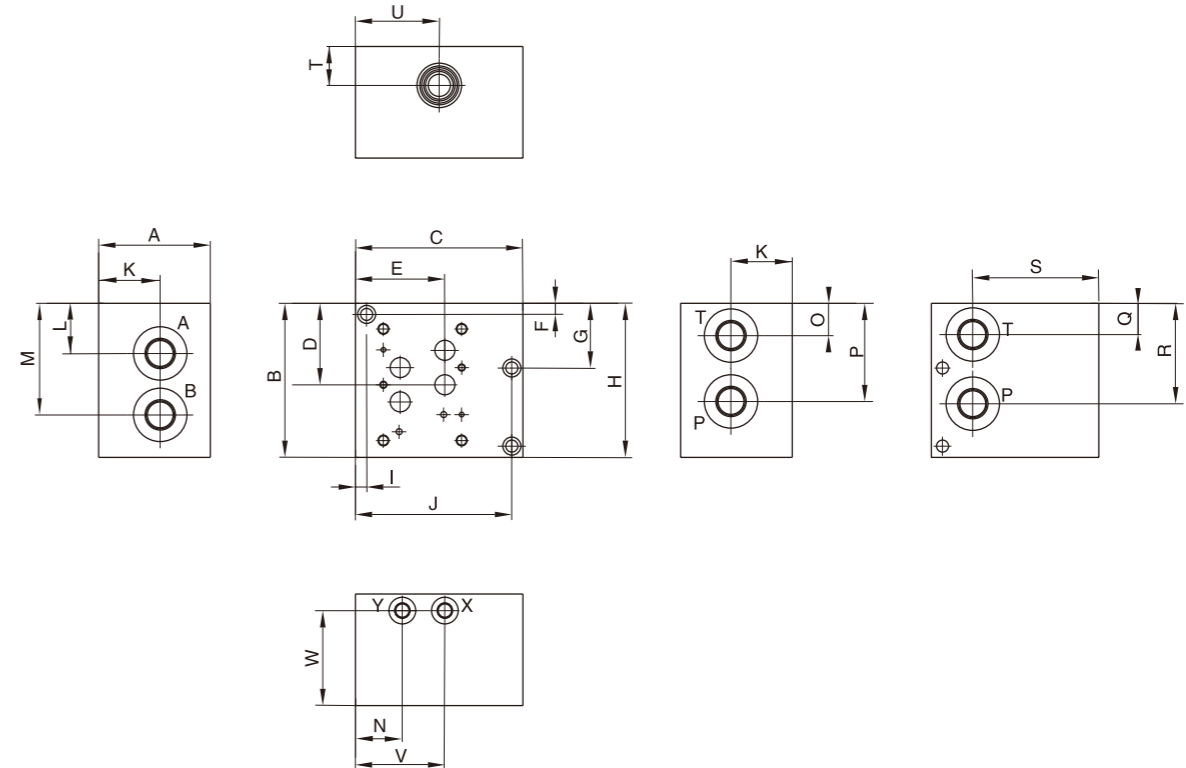
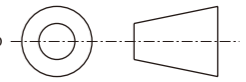
## External dimensions

Dual Ported Subplate with Main Relief Cavity

Valve mtg: UNC 0.25-20x0.50DP and 0.38-16x0.75DP or

Metric M6-1.0mm ISO 6Hx[12.7]DP and M10-1.5mm ISO 6Hx[19.1]DP

Model-View relationship



Dimension	A	B	C	D	E	F	G	H	I	J	K	L
*D07SPRVC12*	2.75 [69.9]	4.75 [120.7]	4.00 [101.6]	2.34 [59.4]	2.81 [71.4]	0.38 [9.5]	---	4.37 [111.0]	1.38 [35.1]	2.00 [50.8]	1.50 [38.1]	1.50 [38.1]
*D07SPRVS12*	2.50 [63.5]	4.75 [120.7]	4.00 [101.6]	2.34 [59.4]	2.81 [71.4]	0.38 [9.5]	---	4.37 [111.0]	1.38 [35.1]	2.00 [50.8]	1.25 [31.8]	1.50 [38.1]
*D07SPRVC16*	4.00 [101.6]	5.50 [139.7]	6.00 [152.4]	2.97 [75.4]	3.31 [84.2]	0.38 [9.5]	2.25 [57.2]	5.13 [130.2]	0.38 [9.5]	5.63 [142.9]	2.19 [55.6]	1.81 [46.0]
*D07SPRVS16*	4.00 [101.6]	5.50 [139.7]	6.00 [152.4]	2.97 [75.4]	3.31 [84.2]	0.38 [9.5]	2.25 [57.2]	5.13 [130.2]	0.38 [9.5]	5.63 [142.9]	2.19 [55.6]	1.81 [46.0]

Dimension	M	N	O	P	Q	R	S	T	U	V	W
*D07SPRVC12*	3.12 [79.2]	1.19 [30.2]	1.19 [30.2]	2.78 [70.6]	1.13 [28.6]	2.75 [69.9]	2.81 [71.4]	1.75 [44.5]	2.22 [56.4]	2.81 [71.4]	2.25 [57.2]
*D07SPRVS12*	3.12 [79.2]	1.19 [30.2]	1.19 [30.2]	2.78 [70.6]	1.13 [28.6]	2.75 [69.9]	2.81 [71.4]	1.25 [31.8]	2.31 [58.7]	2.81 [71.4]	2.00 [50.8]
*D07SPRVC16*	4.13 [104.8]	1.75 [44.5]	1.00 [25.4]	3.50 [88.9]	1.13 [28.6]	3.69 [93.7]	4.50 [114.3]	1.50 [38.1]	3.00 [76.2]	3.25 [82.6]	3.38 [85.7]
*D07SPRVS16*	4.13 [104.8]	1.75 [44.5]	1.13 [28.6]	3.50 [88.9]	1.13 [28.6]	3.69 [93.7]	4.50 [114.3]	1.50 [38.1]	3.00 [76.2]	3.25 [82.6]	3.38 [85.7]