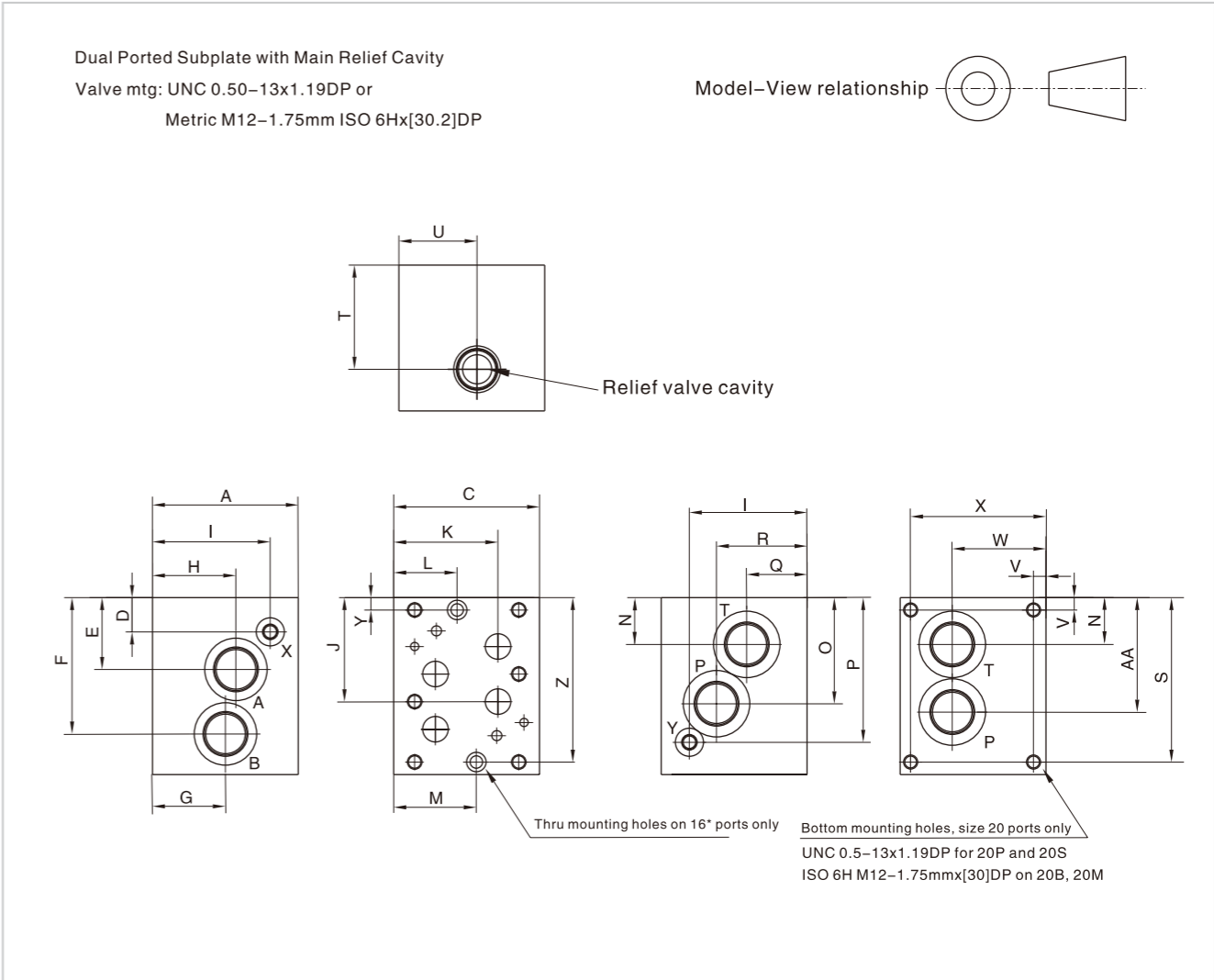
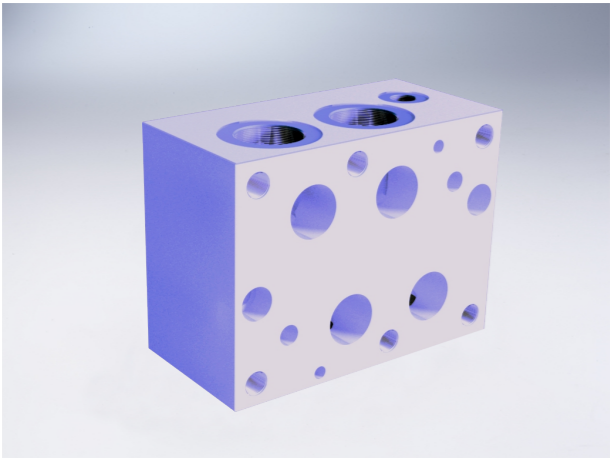


# D08 Subplates With Relief Cavity

# D08 Subplates With Relief Cavity

## External dimensions



## Model description

HY\* D08 SP \* \* \* / 10

A Aluminum 7A04 max. working pressure 20.7Mpa  
 D Ductile Iron 5# max. working pressure 31.5Mpa

Serial number

Valve Pattern 08 NS 25

	P,A,B,T Port Threads				X & Y port size
16P	1"NPT(Z)	20P	1-1/4"NPT(Z)	1/4"NPT(Z)	
16S	SAE-16	20S	SAE-20	SAE-6	
16B	1"BSP(G)	20B	1-1/4"BSP(G)	1/4"BSP(G)	
16M	M33X2	20M	M42X2	M14X1.5	

Subplate

Relief Cavity	
C	C-10-2 w/16* ports C-16-2 w/20* ports
S	T-3A w/16* ports T-16A w/20* ports

RV Main Relief P to T

Dimension	A	B	C	D	E	F	G	H	I	J	K	L	M	N
*D08SPRVC16*	3.00 [76.2]	6.00 [152.4]	4.50 [114.3]	0.91 [23.1]	2.41 [61.2]	4.53 [115.1]	1.87 [47.5]	1.87 [47.5]	1.25 [31.8]	3.47 [88.1]	3.38 [85.9]	1.68 [42.7]	2.56 [65.0]	1.47 [37.3]
*D08SPRVS16*	3.00 [76.2]	6.00 [152.4]	4.50 [114.3]	0.91 [23.1]	2.41 [61.2]	4.53 [115.1]	1.87 [47.5]	1.87 [47.5]	1.25 [31.8]	3.47 [88.1]	3.38 [85.9]	1.68 [42.7]	2.56 [65.0]	1.47 [37.3]
*D08SPRV20*	4.88 [124.0]	6.00 [152.4]	4.88 [124.0]	1.19 [30.2]	2.41 [61.2]	4.69 [119.1]	2.75 [69.9]	2.75 [69.9]	4.00 [101.6]	3.47 [88.1]	3.56 [90.4]	--	--	1.59 [40.4]
*D08SPRV*20M	4.88 [124.0]	6.00 [152.4]	4.88 [124.0]	1.19 [30.2]	2.41 [61.2]	4.69 [119.1]	2.00 [50.8]	2.75 [69.9]	4.00 [101.6]	3.47 [88.1]	3.56 [90.4]	--	--	1.59 [40.4]

Dimension	O	P	Q	R	S	T	U	V	W	X	Y	Z	AA
*D08SPRVC16*	3.59 [91.2]	5.09 [129.3]	1.87 [47.5]	1.87 [47.5]	--	1.25 [31.8]	2.47 [62.7]	--	3.50 [88.9]	--	0.44 [11.2]	5.56 [141.2]	3.59 [91.2]
*D08SPRVS16*	3.59 [91.2]	5.09 [129.3]	1.87 [47.5]	1.87 [47.5]	--	1.87 [47.5]	2.81 [71.4]	--	3.50 [88.9]	--	0.44 [11.2]	5.56 [141.2]	3.59 [91.2]
*D08SPRV20*	3.60 [91.4]	4.88 [124.0]	2.00 [50.8]	3.00 [76.2]	5.56 [141.2]	3.50 [88.9]	2.63 [66.7]	0.44 [11.2]	3.13 [79.5]	4.44 [112.8]	--	--	3.84 [97.6]
*D08SPRV*20M	4.00 [101.6]	4.88 [124.0]	2.00 [50.8]	2.38 [60.3]	5.56 [141.2]	3.50 [88.9]	2.63 [66.7]	0.44 [11.2]	3.13 [79.5]	4.44 [112.8]	--	--	4.00 [101.6]

O.16.1

O.16.2