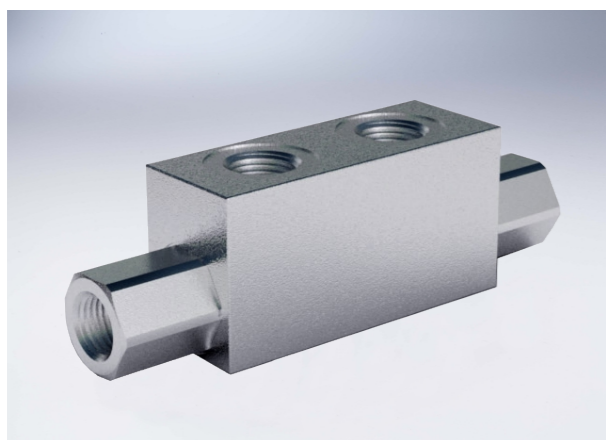


Double Pilot Operated Check Valves

Technical specification

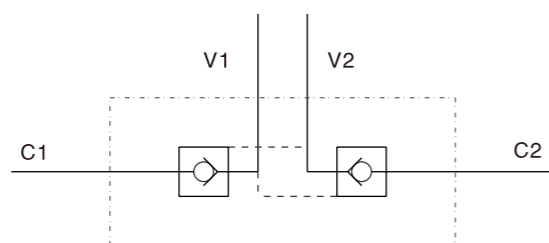


Specification	1/4"L	3/8"L	1/2"L	3/8"	18	1/2"	3/4"
Pilot ratio	1:5.5	1:5.5	1:5	1:5	1:5	1:4	1:4
Max flow (L/min)	20	35	50	45	45	70	100
Max pressure (Bar)	350						300
Cracking Pressure(Bar)	4	3	6	8	3.5	3.5	2

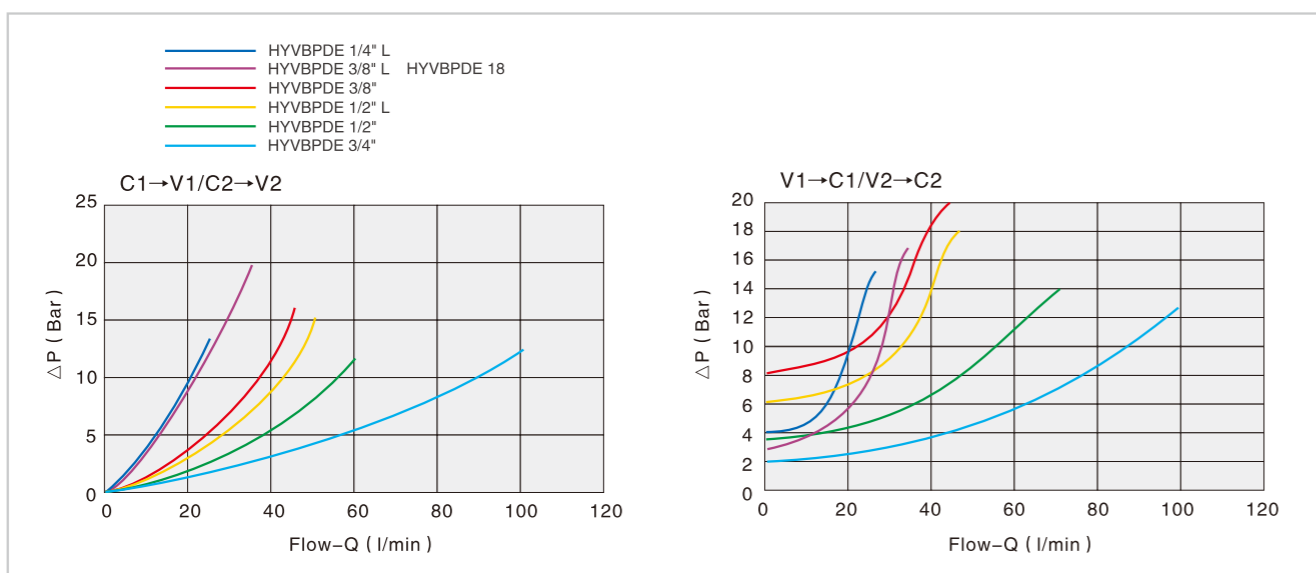
Use and operation:
Pilot check valves are used to block the cylinder in both directions. Flow is free in one direction and blocked in the reverse direction until pilot pressure is applied.

Applications:
Connect V1 and V2 to the pressure flow and C1 and C2 to the actuator.

Code symbol

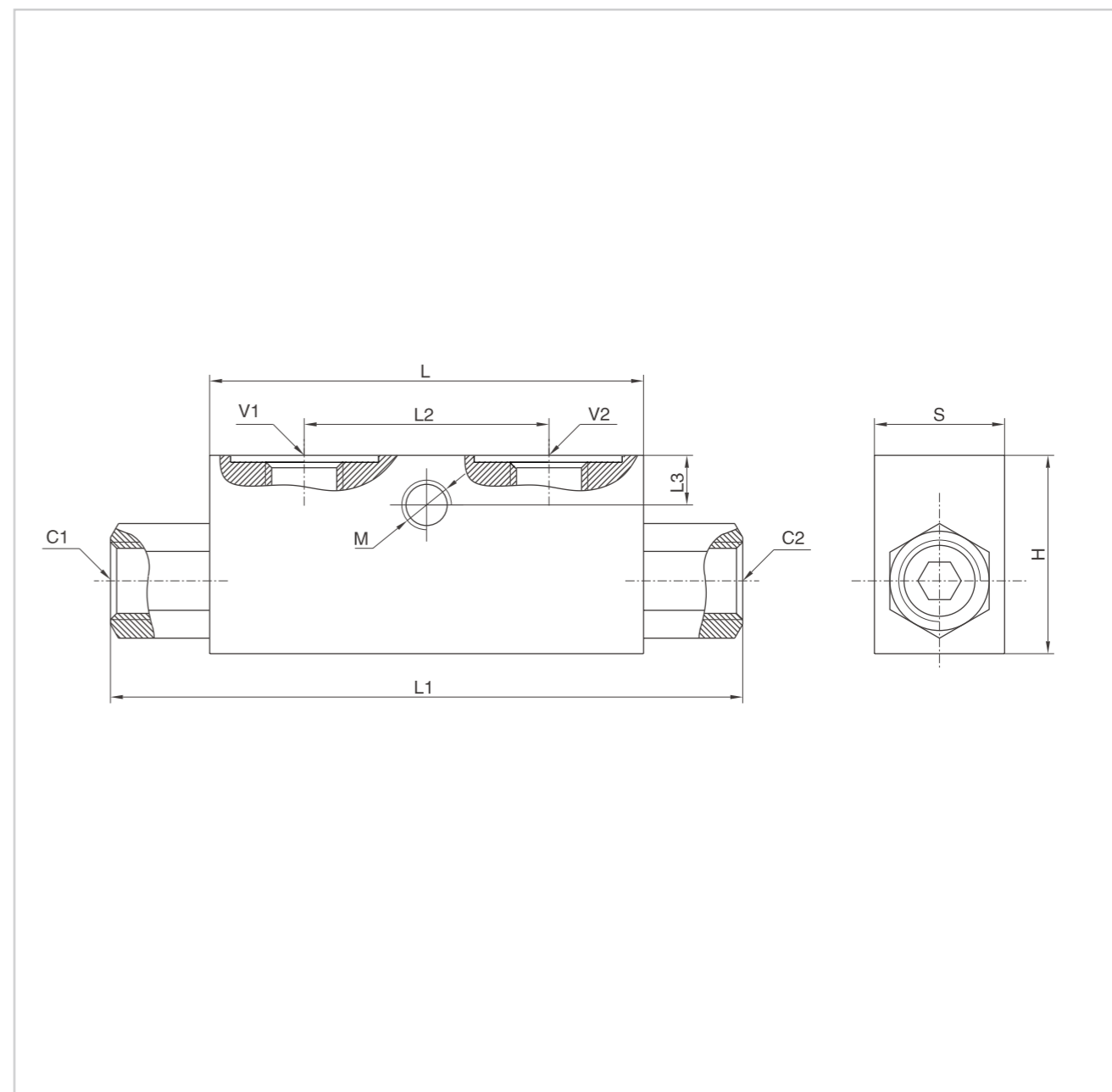


Pressure drops curve



Double Pilot Operated Check Valves

External dimensions



Type	V1/V2/C1/C2	L	L1	L2	L3	M	H	S
HYVBPDE 1/4" L	G 1/4"	68	118	38	7	M8	40	30
HYVBPDE 3/8" L	G 3/8"	68	118	38	7	M8	40	30
HYVBPDE 1/2" L	G 1/2"	80	143	40	14.8	M8	50	30
HYVBPDE 3/8"	G 3/8"	90	156	45	8	M8	45	35
HYVBPDE 18	M18x1.5	90	156	45	8	M8	45	35
HYVBPDE 1/2"	G 1/2"	80	144	40	18	M8	60	35
HYVBPDE 3/4"	G 3/4"	100	192	46	8	M8	60	40