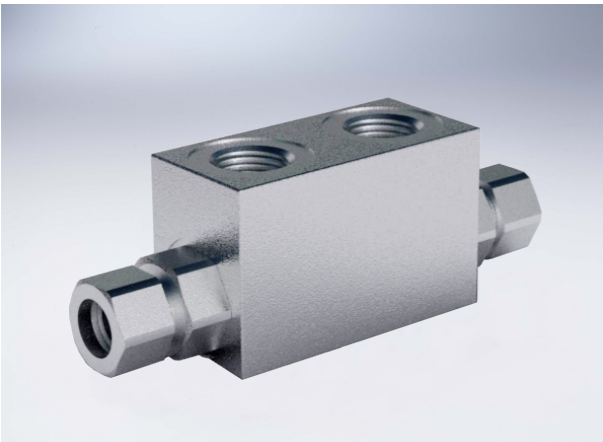


Double Pilot Operated Check Valves For 12 mm Pipe Mounting (Din 2353)

Technical specification

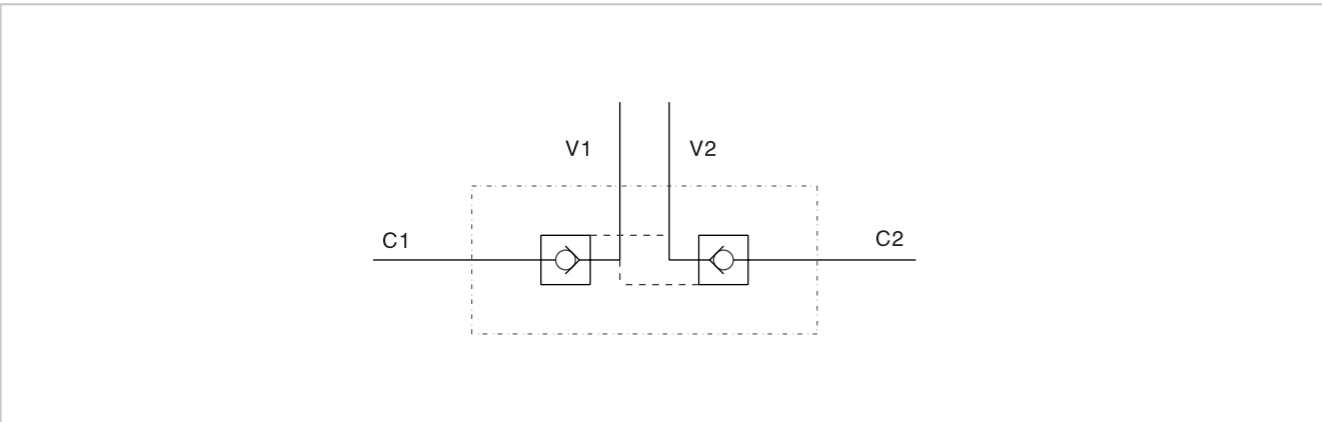


Specification	1/4" L 2 CEXC	3/8" L 2 CEXC	1/4" L 2 CEXC-10L
Pilot ratio	1:5.5		
Max flow (L/min)	20	30	20
Max pressure (Bar)	350		
Cracking Pressure (Bar)	4	4	5.5

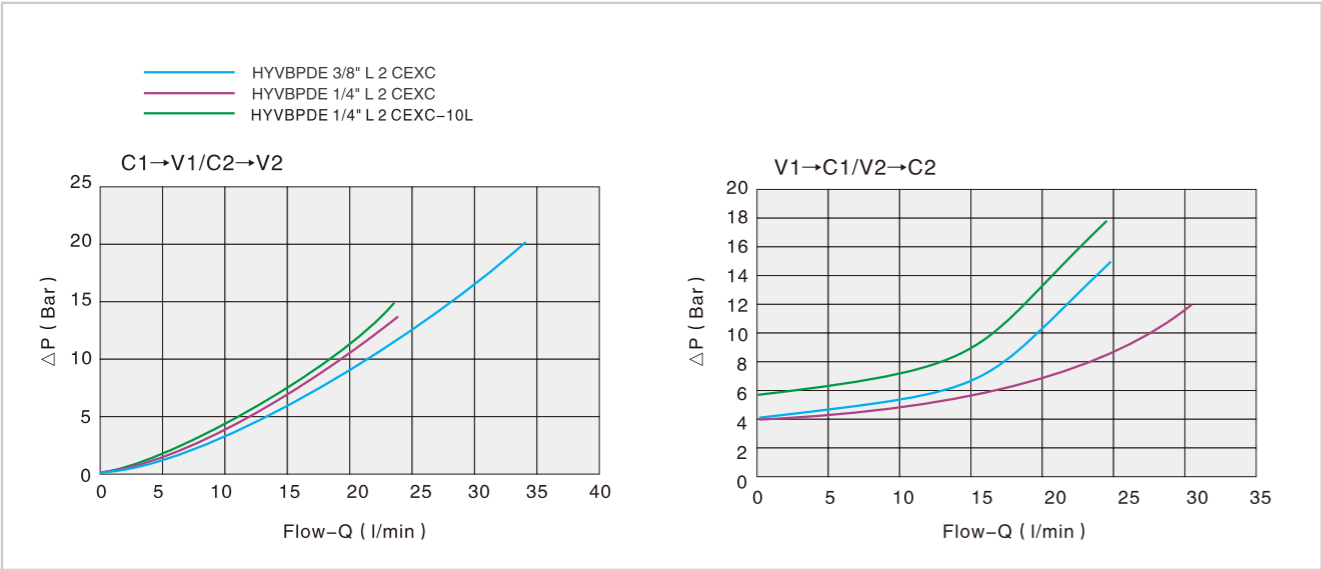
Use and operation
Pilot check valves are used to block the actuator in both directions. Flow is free in one direction and blocked in the reverse direction until pilot pressure is applied. They are easily assembled on a cylinder. We supply on request fittings kit for mounting on cylinders with a specific centre distance.

Applications
Connect V1 and V2 to the pressure flow and C1 and C2 to the actuator with the pipe.

Code symbol

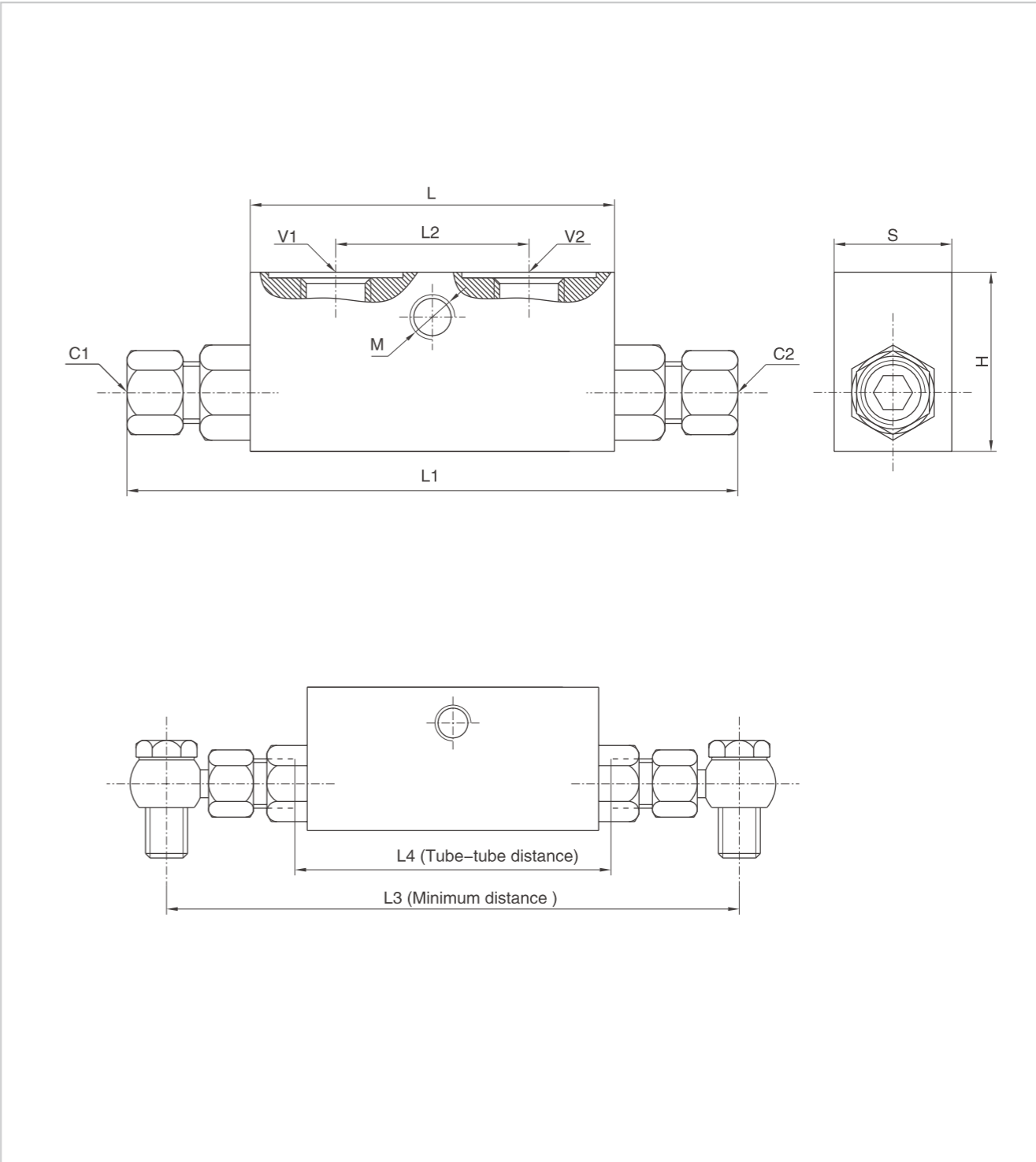


Pressure drops curve



Double Pilot Operated Check Valves For 12 mm Pipe Mounting (Din 2353)

External dimensions



Type	V1/V2	C1/C2	L	L1	L2	L3	L4	M	H	S
HYVBPDE 1/4" L 2 CEXC	G 1/4"	12L	64	134	36	160	84	M8	40	30
HYVBPDE 3/8" L 2 CEXC	G 3/8"	12L	64	134	36	166	84	M8	40	30
HYVBPDE 1/4" L 2 CEXC-10L	G 1/4"	10L	64	131	36	160	84	M8	40	30