

Double Pilot Operated Check Valves For 12 mm Banjo Mounting (Din 2353)

Technical specification

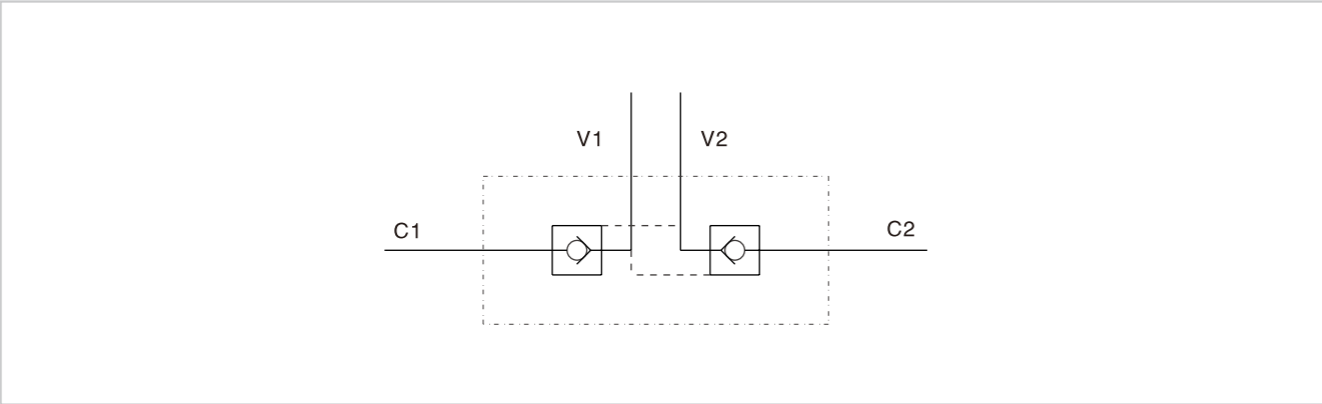


Specification	3/8" L 2 CC	1/2" L 2 CC
Pilot ratio	1:5.5	1:5
Max flow (L/min)	35	50
Max pressure (Bar)	350	
Cracking Pressure (Bar)	3	

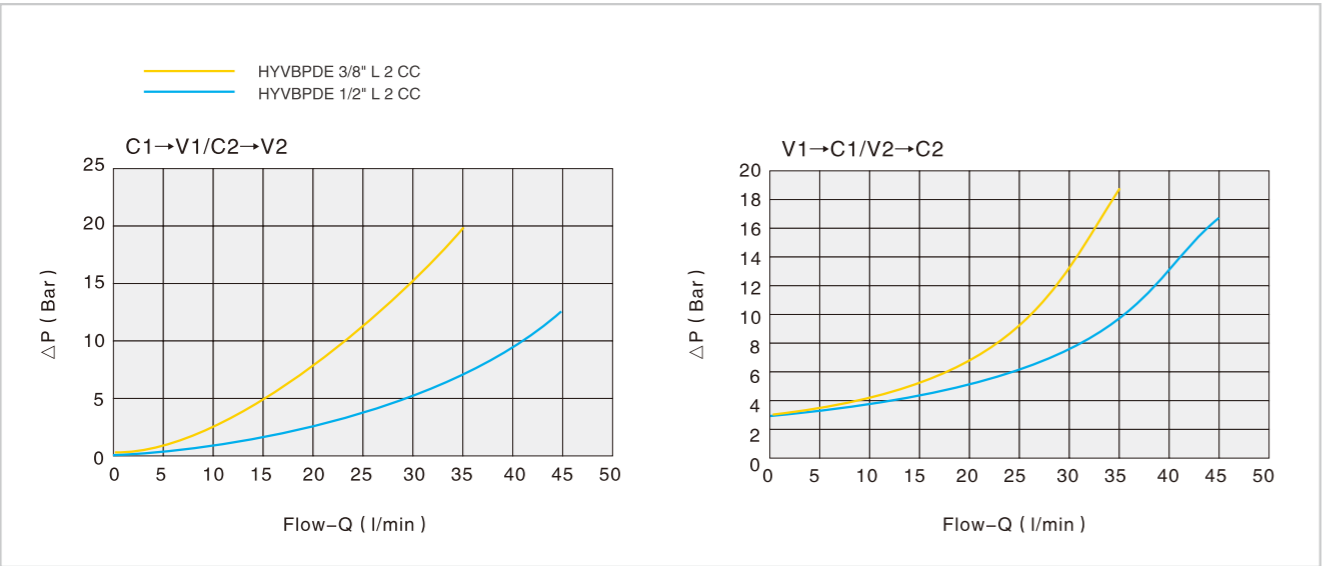
Use and operation
Pilot check valves are used to block the actuator in both directions. Flow is free in one direction and blocked in the reverse direction until pilot pressure is applied. They are easily assembled on a cylinder. We supply on request fittings kit for mounting on cylinders with a specific centre distance.

Applications
Connect V1 and V2 to the pressure flow and C1 and C2 to the actuator with a banjo.

Code symbol

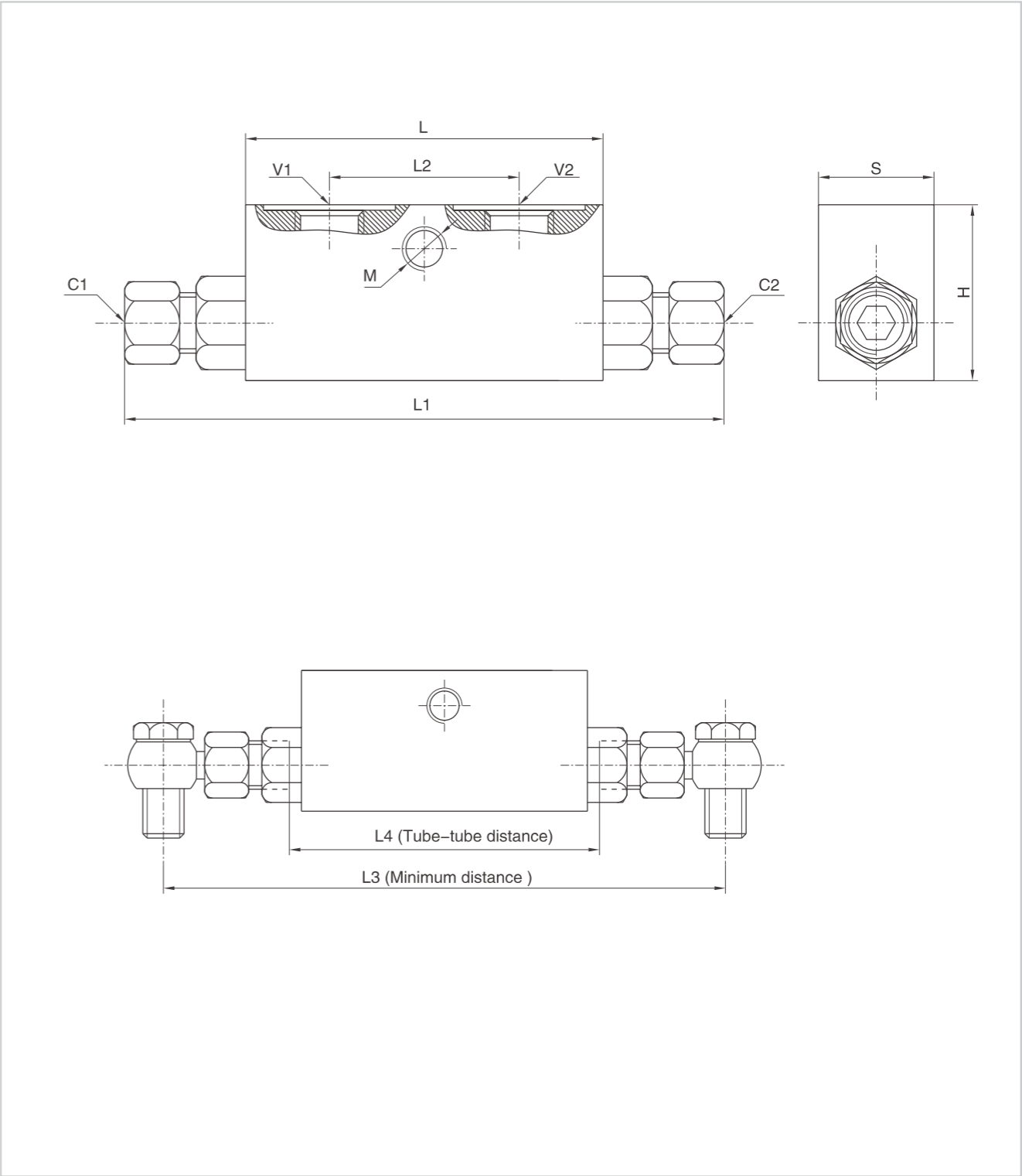


Pressure drops curve



Double Pilot Operated Check Valves For 12 mm Banjo Mounting (Din 2353)

External dimensions



Type	V1/V2	C1/C2	L	L1	L2	L3	L4	M	H	S
HYVBPDE 3/8" L 2 CC	G 3/8"	12L	80	150	38	180	96	M8	40	30
HYVBPDE 1/2" L 2 CC	G 1/2"	15L	90	164	45	196	106	M8	45	35