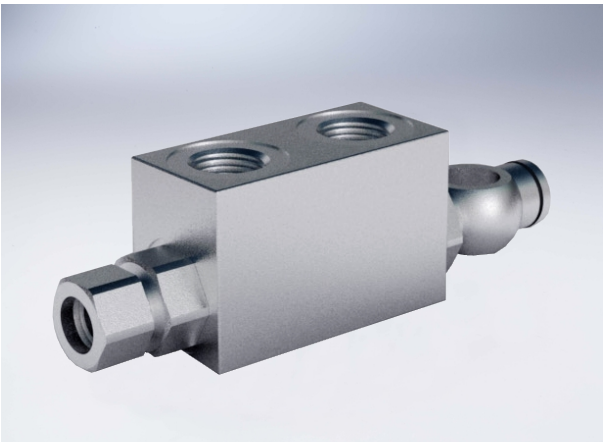


Double Pilot Operated Check Valve With Adjustable Banjo Union

Technical specification

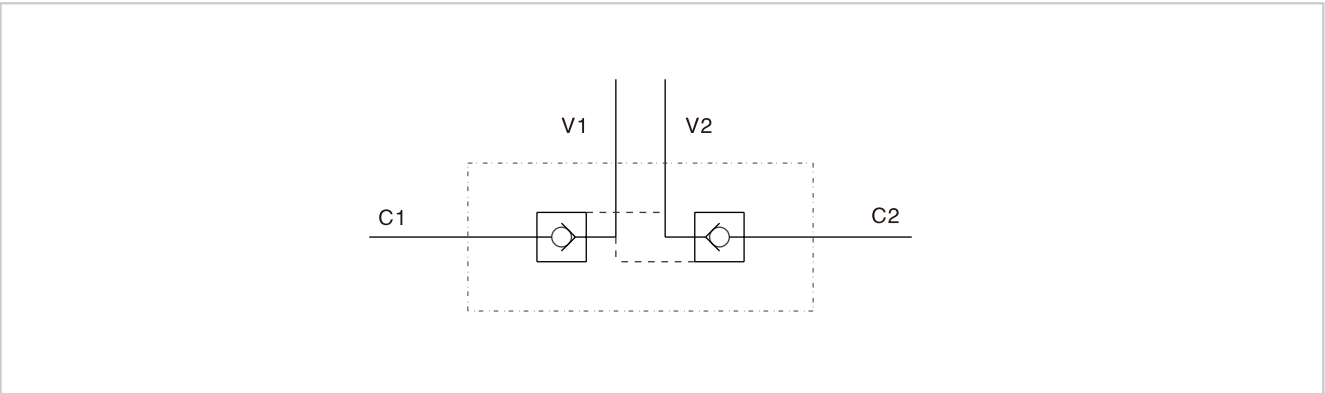


Specification	3/8" L SC
Pilot ratio	1:5.5
Max flow (L/min)	30
Max pressure (Bar)	350
Cracking Pressure (Bar)	4

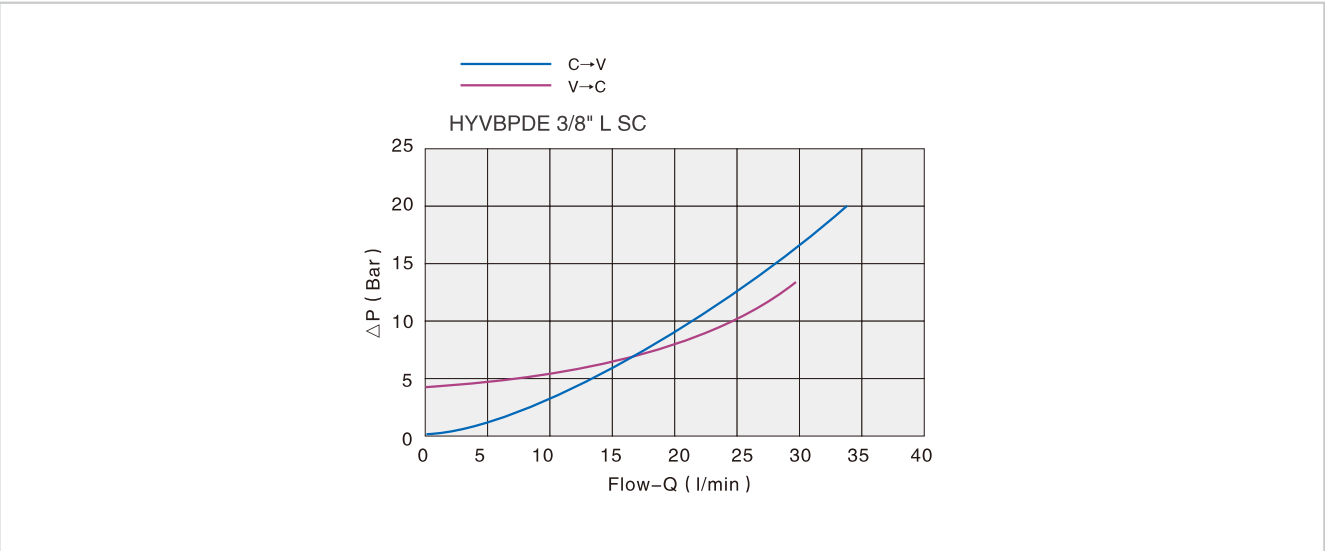
Use and operation:
 Pilot check valves are used to block the cylinder in both directions. Flow is free in one direction and blocked in the reverse direction until pilot pressure is applied. This valve is ideal for very short distance centre cylinders. The check cartridge serves also as fixing banjo, allowing after nut releasing a 90° regulation.

Applications:
 Connect V1 and V2 to the pressure flow, connect C1 directly to the cylinder through the 3/8" screw and C2 to the cylinder through the banjo.

Code symbol

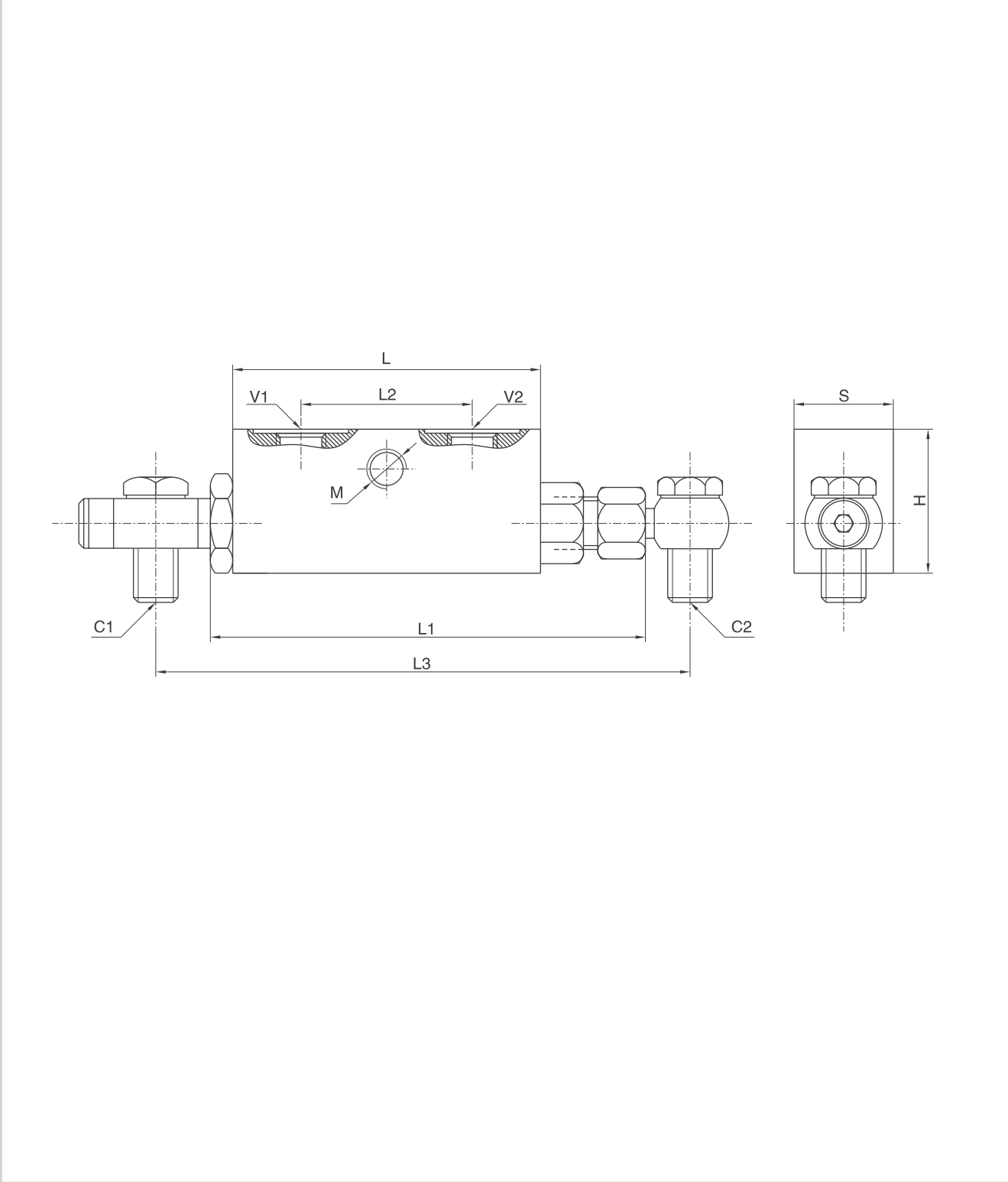


Pressure drops curve



Double Pilot Operated Check Valve With Adjustable Banjo Union

External dimensions



Type	V1/V2	C1/C2	L	L1	L2	L3	M	H	S
HYVBPDE 3/8" L SC	G 3/8"	12L	64	106	36	136	M8	40	30