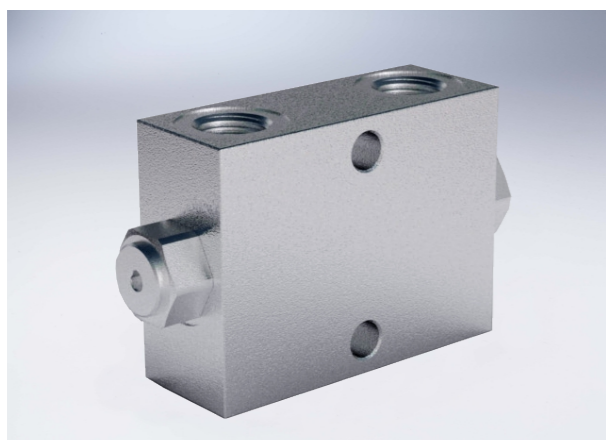


Double Pilot Operated Check Valves – type A

Technical specification

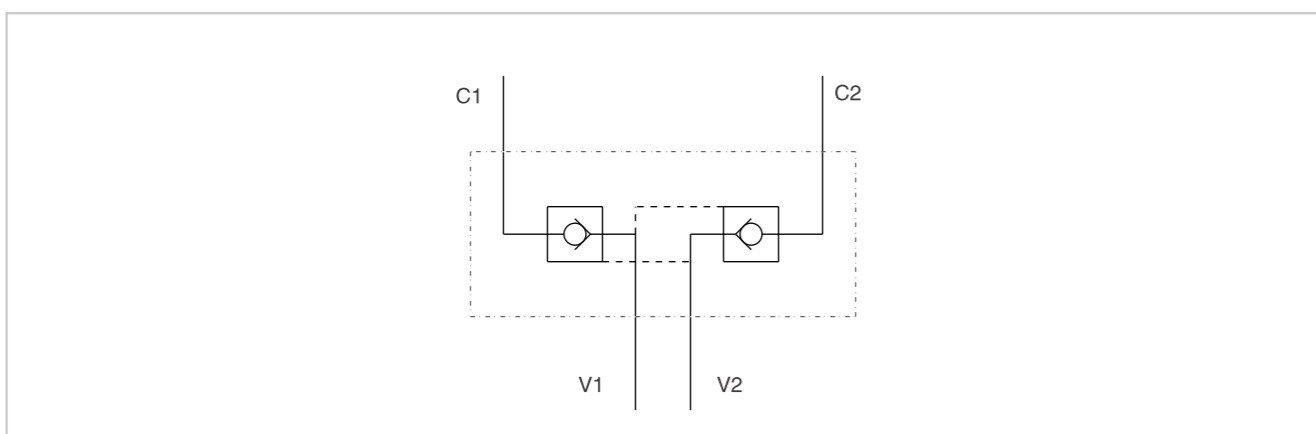


Specification	1/4" A	3/8" A	1/2" A
Pilot ratio	1:5.5	1:5.5	1:4.5
Max flow (L/min)	20	30	55
Max pressure (Bar)	350		
Cracking Pressure (Bar)	4.5	4.5	3

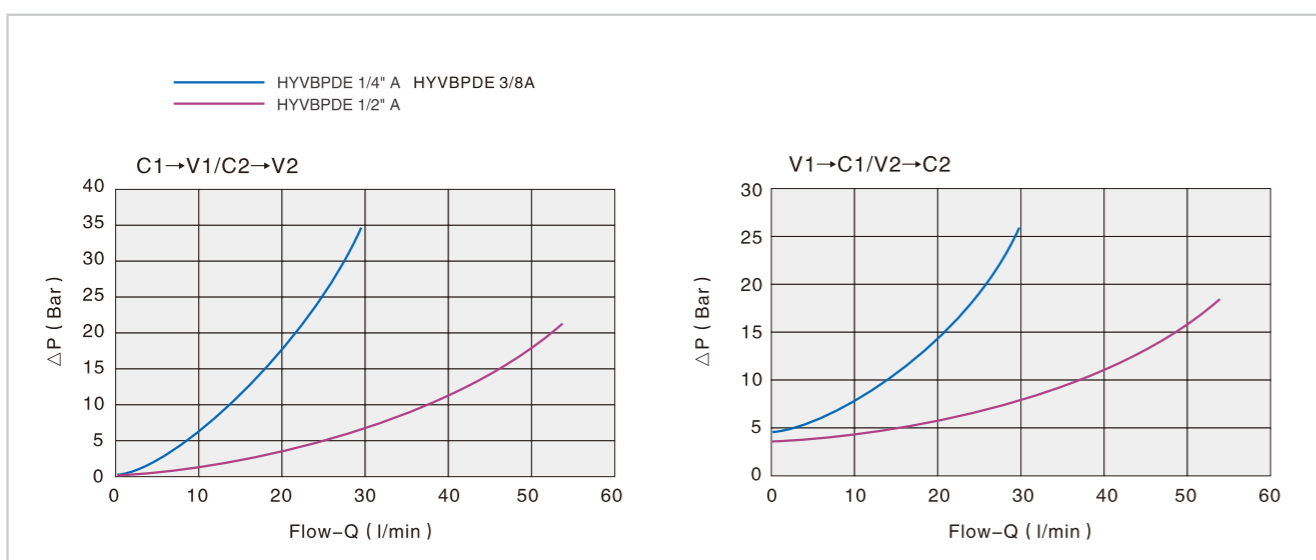
Use and operation:
Pilot check valves are used to block the cylinder in both directions. Flow is free in one direction and blocked in the reverse direction until pilot pressure is applied.

Applications:
Connect V1 and V2 to the pressure flow and C1 and C2 to the actuator.

Code symbol

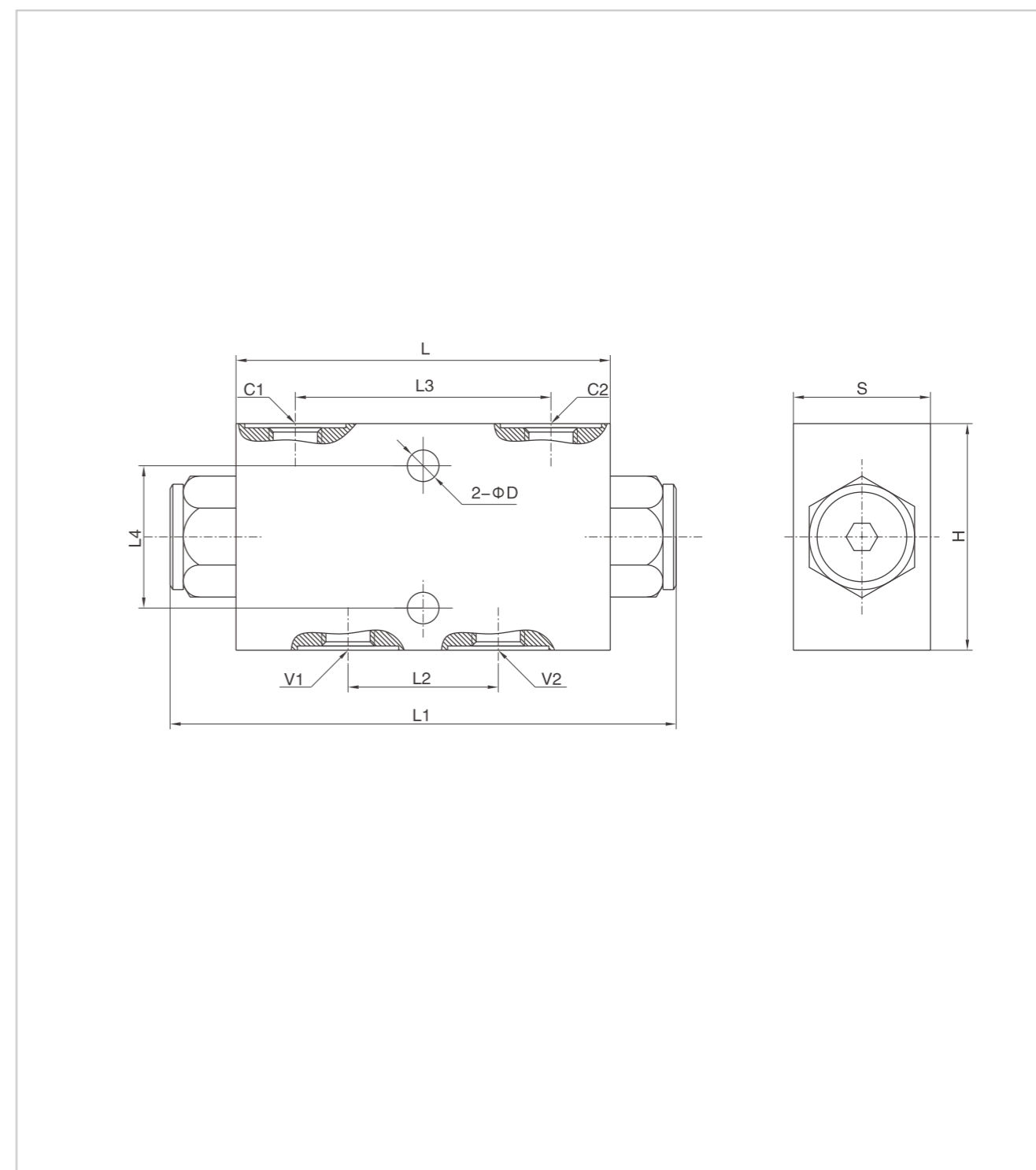


Pressure drops curve



Double Pilot Operated Check Valves – type A

External dimensions



Type	V1/V2/C1/C2	L	L1	L2	L3	L4	D	H	S
HYVBPDE 1/4" A	G 1/4"	80	116.8	30	52	44	7	60	30
HYVBPDE 3/8" A	G 3/8"	80	116.8	30	52	44	7	60	30
HYVBPDE 1/2" A	G 1/2"	110	139	34.2	68	40	8.5	70	35