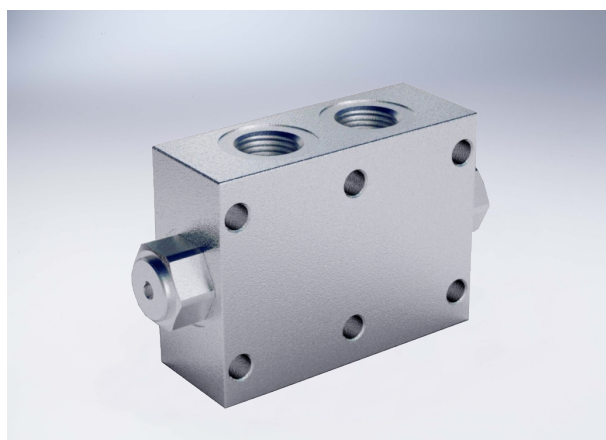


Double Pilot Operated Check Valves Flangeable

Technical specification

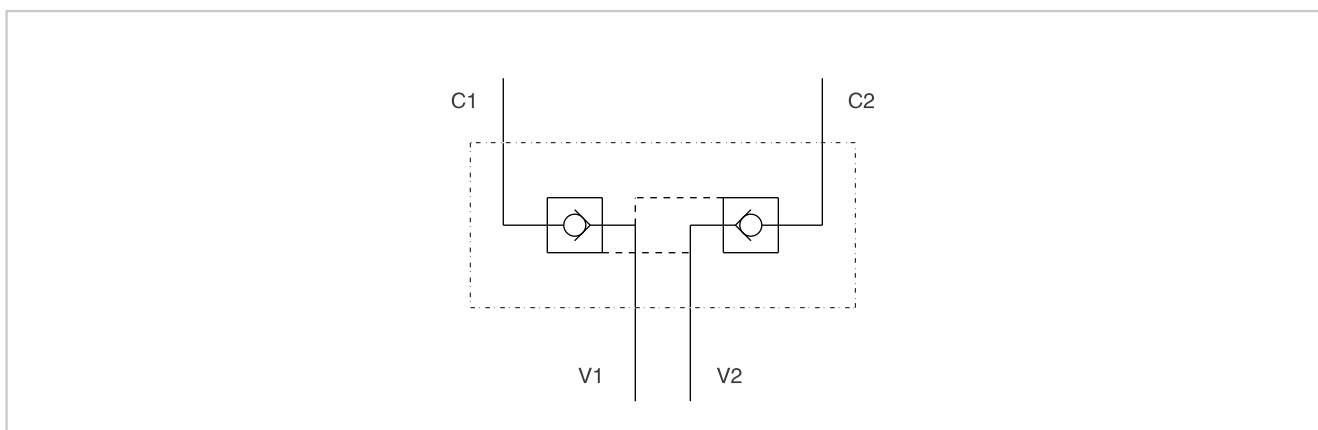


Specification	HYVBPDE 3/8" FL	HYVBPDE 1/2" FL
Pilot ratio	1:5.5	1:4.5
Max flow (L/min)	30	55
Max pressure (Bar)	350	
Cracking Pressure (Bar)	4.5	3

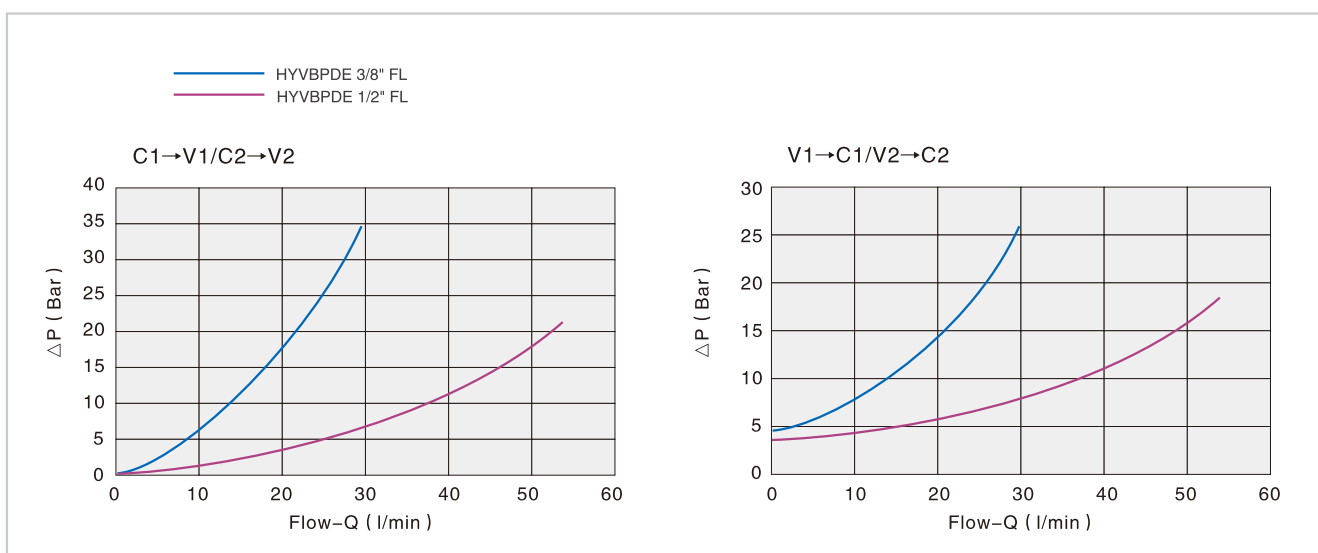
Use and operation:
Pilot check valves are used to block the cylinder in both directions. Flow is free in one direction and blocked in the reverse direction until pilot pressure is applied. Face mounting enables assembly directly on the cylinder.

Applications:
Connect V1 and V2 to the pressure flow and C1 and C2 to the actuator through the flange.

Code symbol



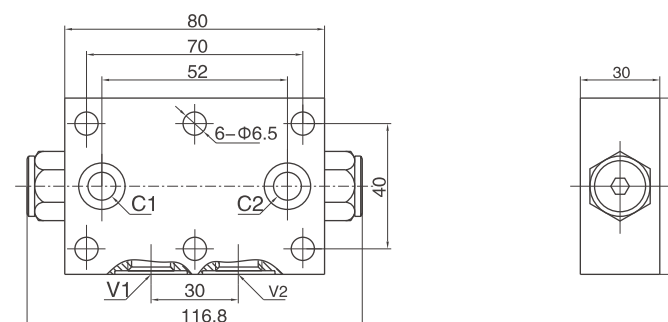
Pressure drops curve



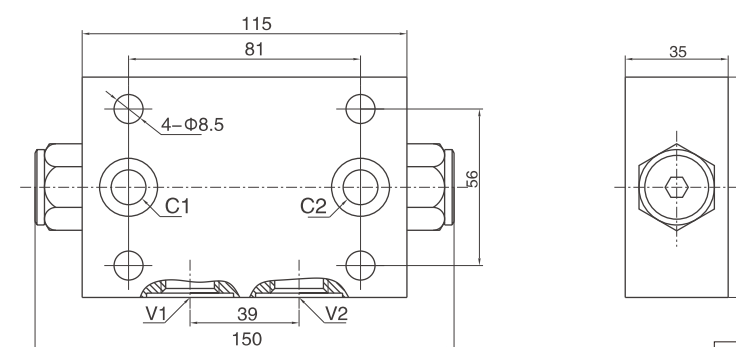
Double Pilot Operated Check Valves Flangeable

External dimensions

HYVBPDE 3/8" FL



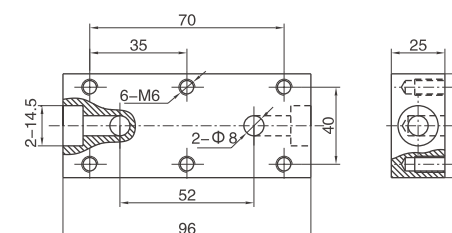
HYVBPDE 1/2" FL



Specification	V1/V2	C1/C2
HYVBPDE 3/8" FL	G 3/8"	Φ6.5
HYVBPDE 1/2" FL	G 1/2"	Φ8.5

Valve's flanges

TYPE B5000 (3/8")



TYPE B5500 (1/2")

