

Double Pilot Operated Check Valves To Weld

Technical specification



Specification	70	80	90
Pilot ratio	1:5.5		
Max flow (L/min)	25		
Max pressure (Bar)	350		
Cracking Pressure (Bar)	3		

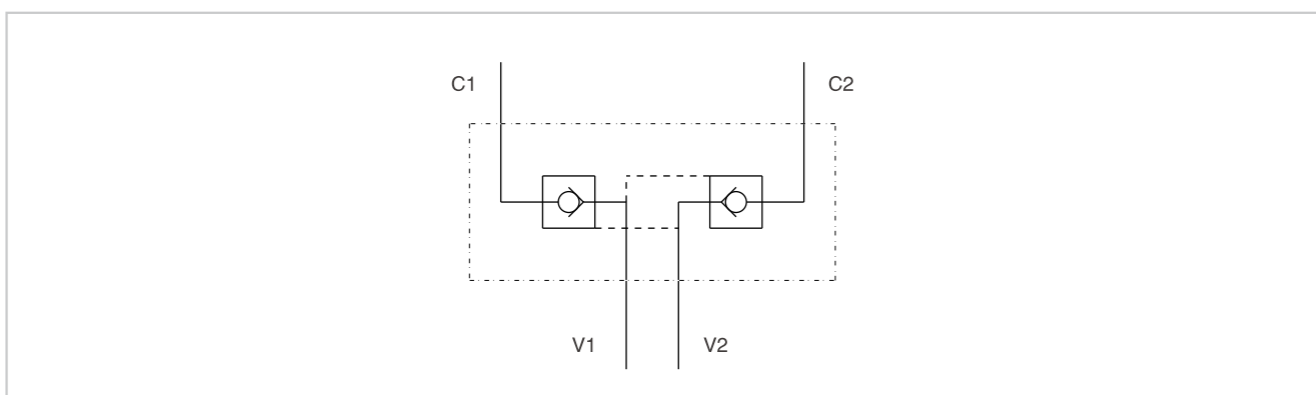
Use and operation:

Having the check cartridge inside, the function of this valve is nearly the same of the pilot check valves. Directly weld on the cylinder. Q70 available in the single operated type. The feature of this valve is the high pressure drop, so as to reduce speed and to limit vibrations.

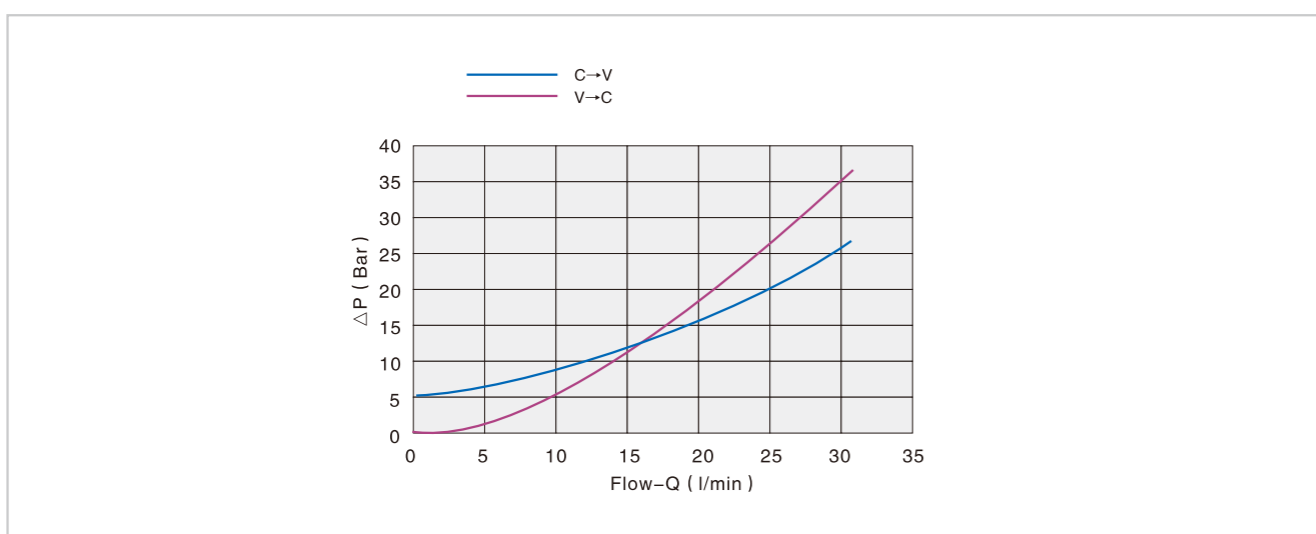
Applications:

Connect V1 and V2 to the pressure flow and C1 and C2 to the actuator. The check cartridge and the pilot piston have to be mounted after installation of the valve. therefore they are supplied separately.

Code symbol

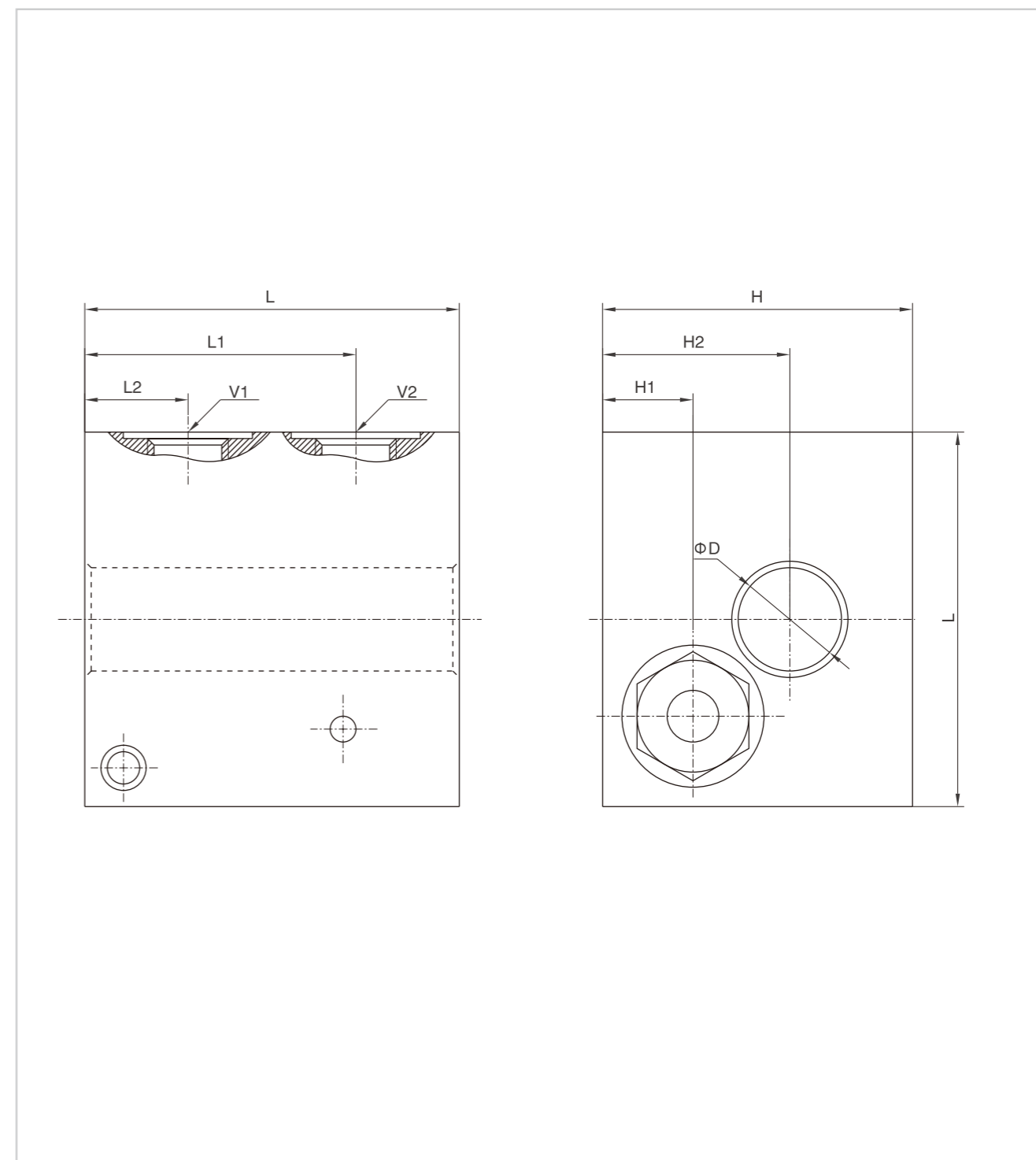


Pressure drops curve



Double Pilot Operated Check Valves To Weld

External dimensions



Type	V1/V2	L	L1	L2	D	H	H1	H2
HYVBAS 70	G 3/8"	70	54	26	25.5	65	17	41
HYVBAS 80	G 3/8"	80	54	26	25.5	65	19	41
HYVBAS 90	G 3/8"	90	59	31	25.5	65	19	41