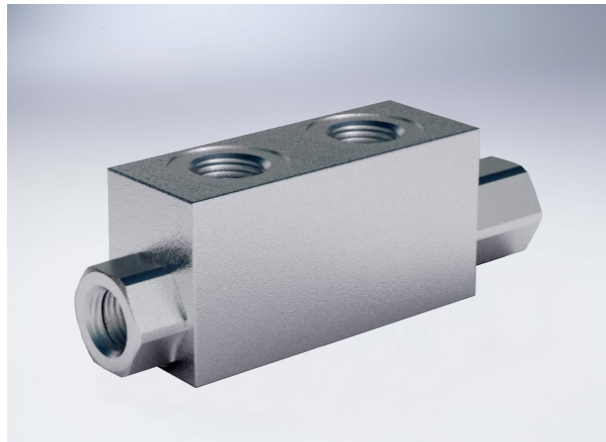


Single Pilot Operated Check Valves

Technical specification

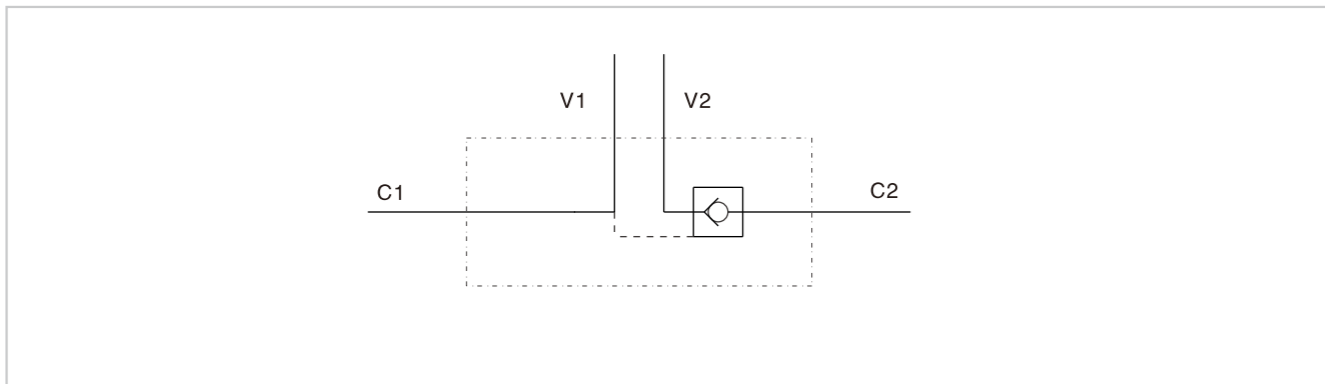


Specification	1/4" L 4 VIE	3/8" L 4 VIE	1/2" L 4 VIE	3/8" 4 VIE	1/2" 4 VIE	3/4" 4 VIE
Pilot ratio	1:5.5	1:5.5	1:5	1:5	1:4	1:4
Max flow (L/min)	20	35	50	45	70	100
Max pressure (Bar)	350					
Cracking Pressure (Bar)	4	3	6	8	3.5	2

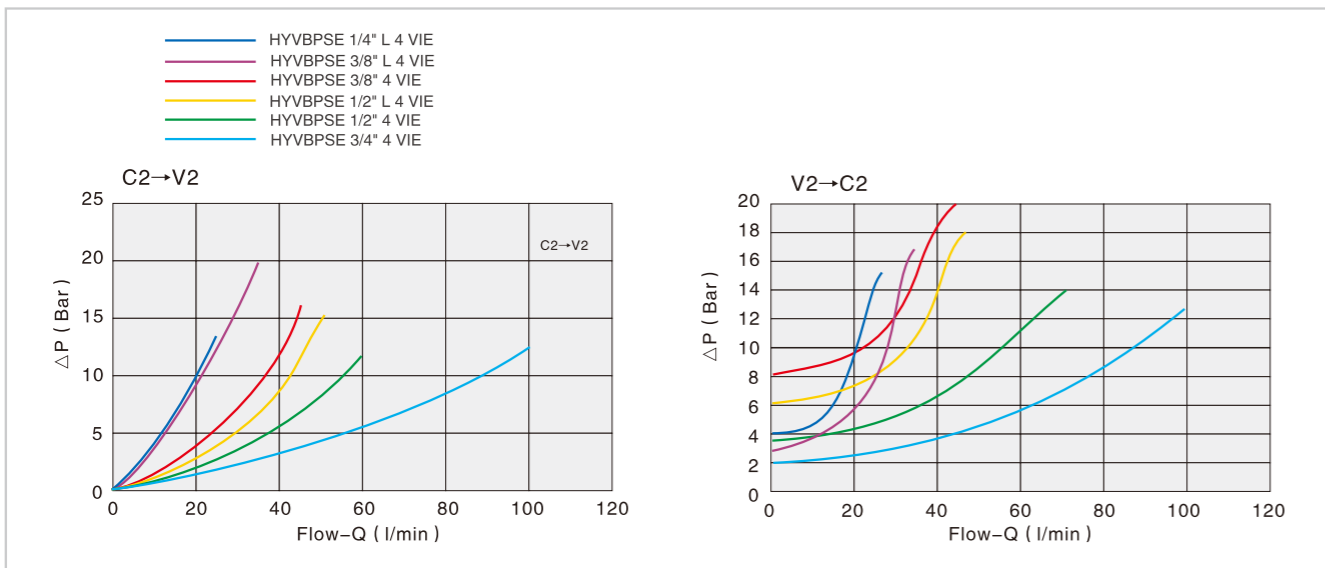
Use and operation:
 These valves are used to block the cylinder in one direction. The flow is free in one direction and blocked in the reverse direction until pilot pressure is applied.

Applications:
 Connect V1 and V2 to the pressure flow, C1 to the free flow side of the actuator and C2 to the actuator's side you want the flow to be blocked.

Code symbol

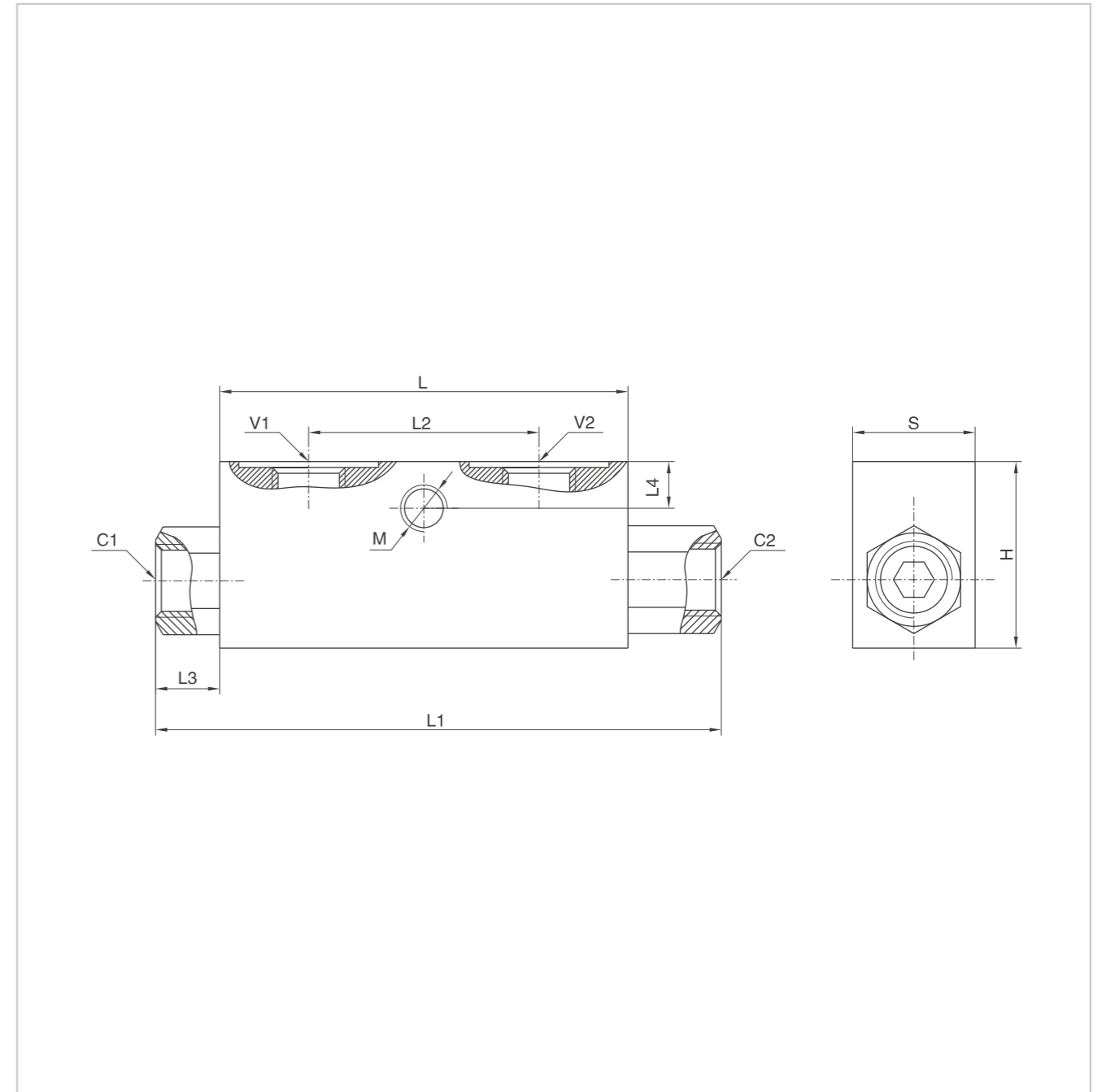


Pressure drops curve



Single Pilot Operated Check Valves

External dimensions



Type	V1/V2/C1/C2	L	L1	L2	L3	L4	M	H	S
HYVBPSE 1/4" L 4 VIE	G 1/4"	64	106.5	36	18.5	8	M8	40	30
HYVBPSE 3/8" L 4 VIE	G 3/8"	80	120	38	16	8	M8	40	30
HYVBPSE 1/2" L 4 VIE	G 1/2"	90	133	45	17	8	M8	45	35
HYVBPSE 3/8" 4 VIE	G 3/8"	90	148	45	25	8	M8	45	35
HYVBPSE 1/2" 4 VIE	G 1/2"	80	134	40	23	18	M8	60	35
HYVBPSE 3/4" 4 VIE	G 3/4"	100	182	48	36	8	M8	60	40