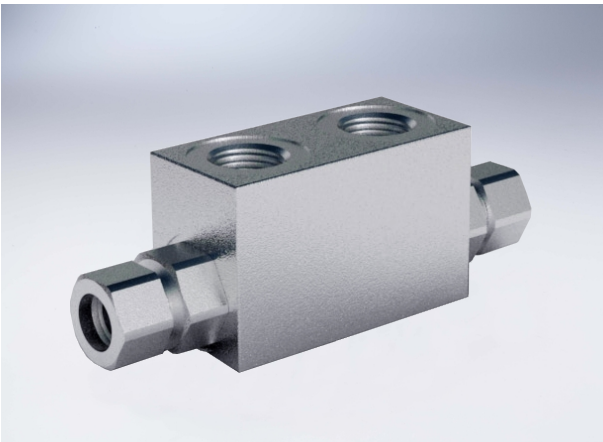


Single Pilot Operated Check Valves For 12 mm Pipe Mounting (Din 2353)

Technical specification

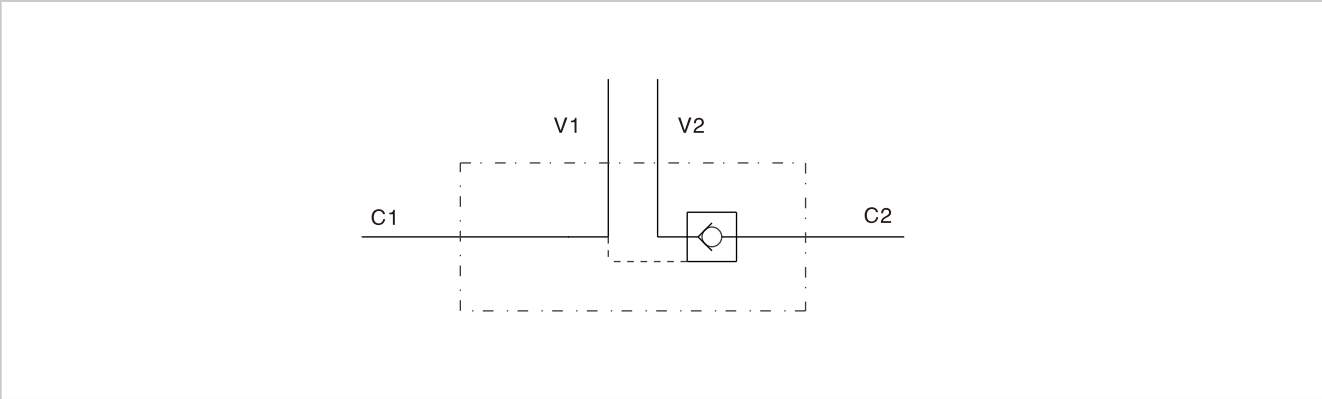


Specification	1/4" L 2 CEXC	3/8" L 2 CEXC	1/2" L 2 CC
Pilot ratio	1:5.5	1:5.5	1:5
Max flow (L/min)	20	30	50
Max pressure (Bar)	350		
Cracking Pressure (Bar)	4	4	3

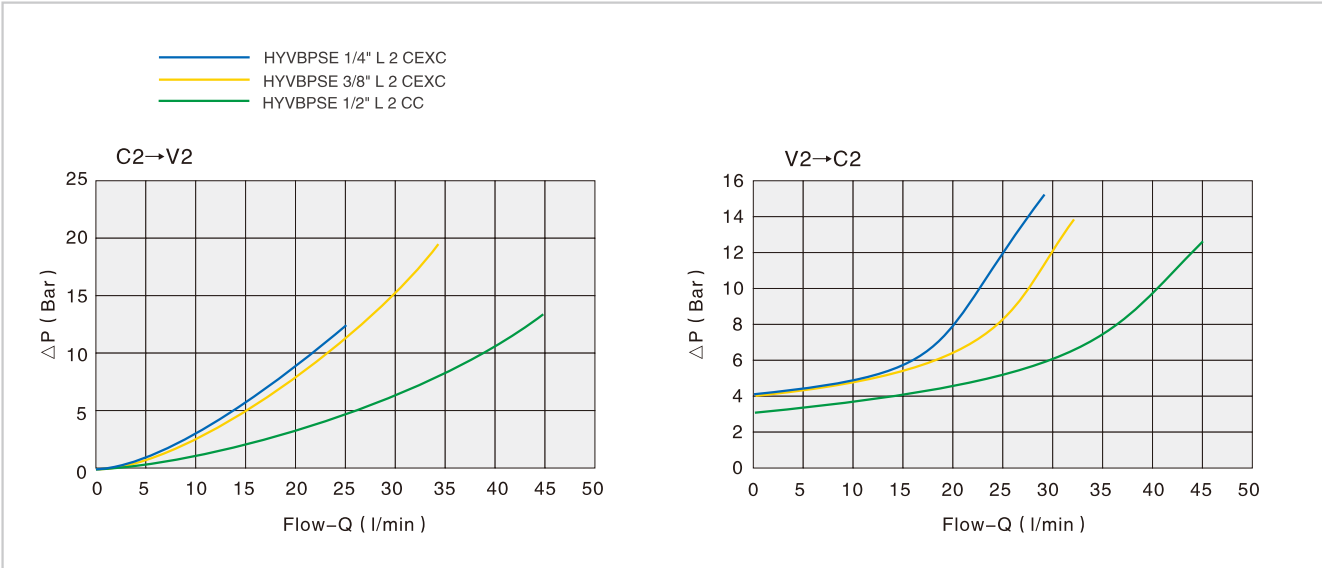
Use and operation:
These valves are used to block the cylinder in one direction. The flow is free in one direction and blocked in the reverse direction until pilot pressure is applied. They are easily assembled on cylinders. Specific distance-centre mounting fittings kit on request.

Applications:
Connect V1 and V2 to the pressure flow, C1 to the free flow side of the actuator and C2 to the actuator's side you want the flow to be blocked.

Code symbol

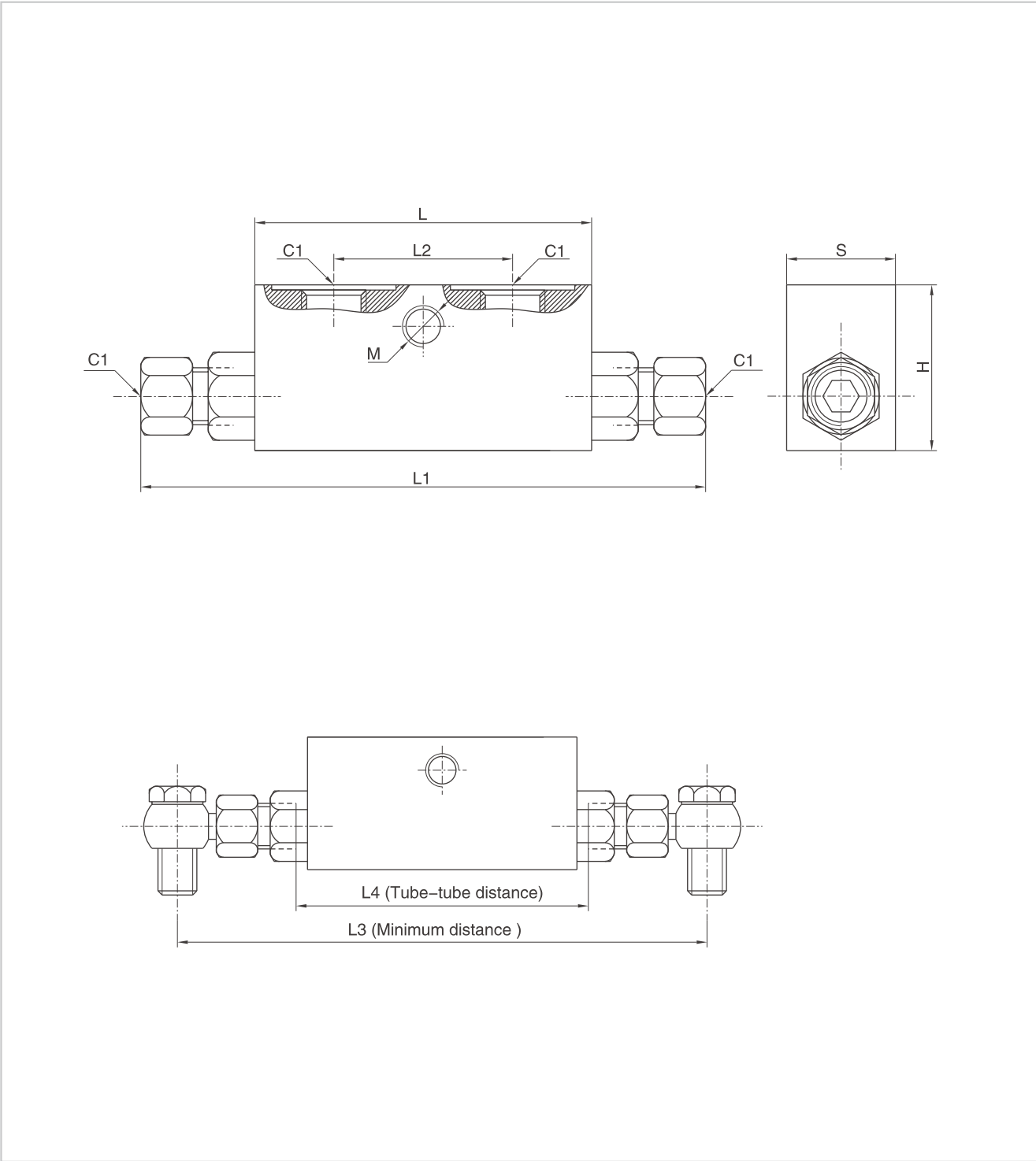


Pressure drops curve



Single Pilot Operated Check Valves For 12 mm Pipe Mounting (Din 2353)

External dimensions



Type	V1/V2	C1/C2	L	L1	L2	L3	L4	M	H	S
HYVBPSE 1/4" L 2 CEXC	G 1/4"	12L	64	134	36	160	84	M8	40	30
HYVBPSE 3/8" L 2 CEXC	G 3/8"	12L	64	134	36	166	84	M8	40	30
HYVBPSE 1/2" L 2 CC	G 1/2"	15L	90	164	45	196	106	M8	45	35