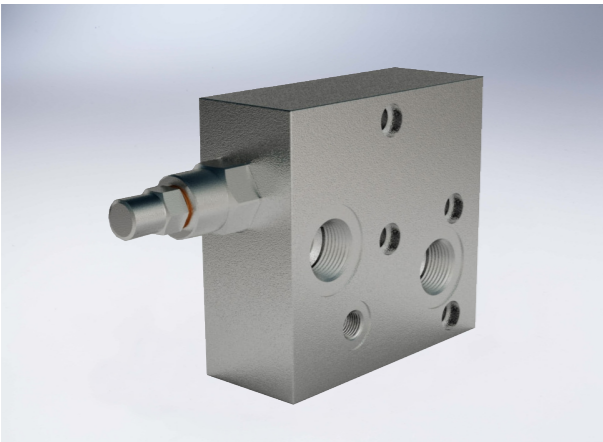


Overcentre Valves Flangeable On Danfoss Motors Omp/Omr

Technical specification

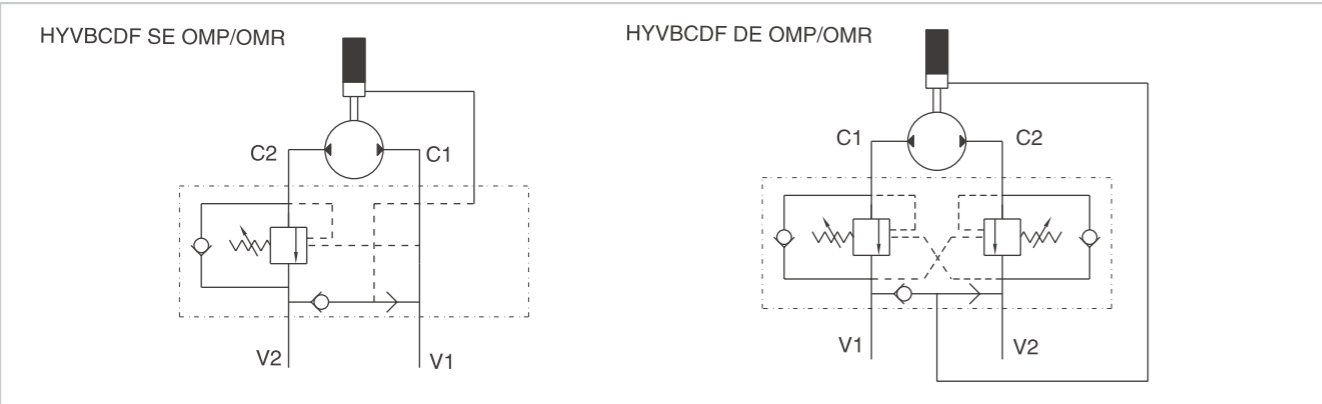


Specification	1/2" SE OMP-OMR	1/2" DE OMP-OMR
Pilot ratio	1:4.5	
Max flow (L/min)	40	60
Max pressure (Bar)	350	

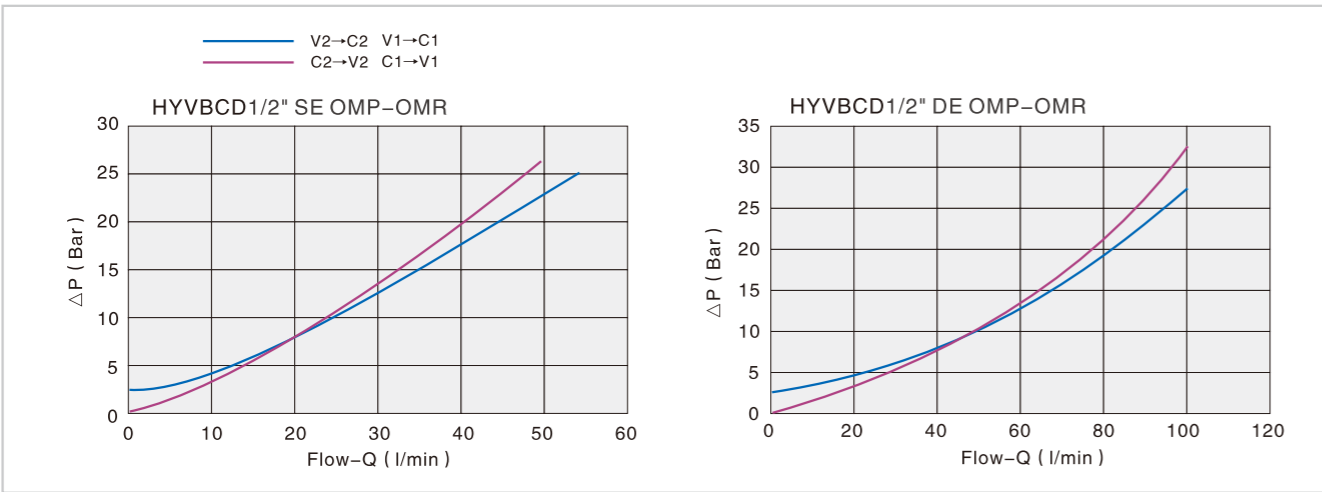
Use and operation:
 These valves are used to control actuator's movement and block in both directions in order to enable the following functions:
 - under control descent of a load: load's weight doesn't carry it away, as the valve prevents any cavitations of the actuator;
 - limited maximum pressure in case of shocks created by loads, overloads or sudden manoeuvrings (load control with opened centre distributor).
 Direct flange is ideal for Danfoss engine type OMP-OMR and provides a maximum safety, very low pressure drops and solid installation.

Applications:
 Single pilot: connect V1 and V2 to the pressure flow, C1 to the free flowside of the actuator and flange C2 to the motor's side you want the flow to be blocked.
 Double pilot: connect V1 and V2 to the pressure flow and flange C1 and C2 directly to the motor.

Code symbol



Pressure drops curve



Overcentre Valves Flangeable On Danfoss Motors Omp/Omr

External dimensions

