

Differential Type Relief Valves

Technical specification



Specification	1/4 "	1"	
Max.flow (L/min)	120	180	
SPRINGS	Setting range (Bar)	20-200	40-400 Standard
	Pressure increase (Bar/turn)Q=4L/min	40	80
	Standard setting (Bar)	160	180

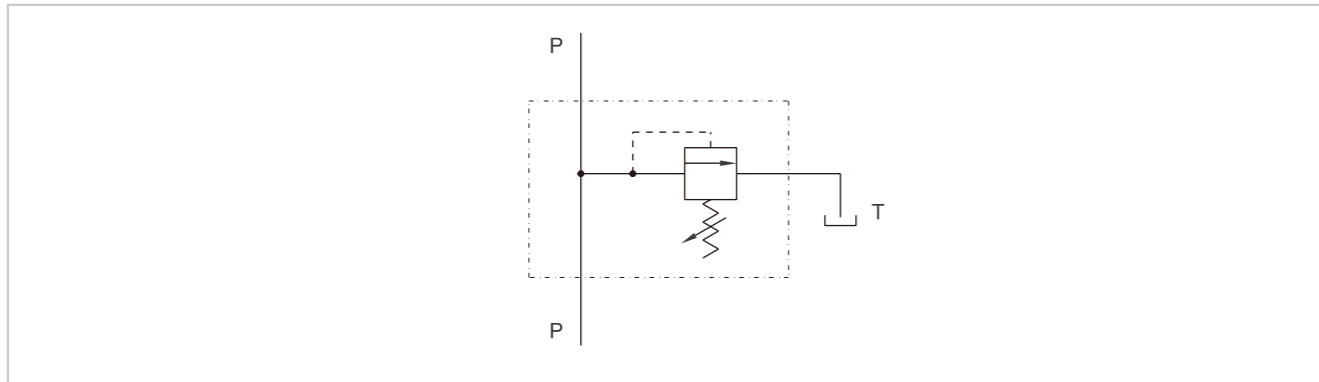
Use and operation:

The relief valve provides overload protection in a fast and accurate way: when it reaches pressure setting, the valve opens allowing pressure relief in order not to exceed this setting. The differential valve opening is slower than the standard one, but the setting is more stable when the flow changes.

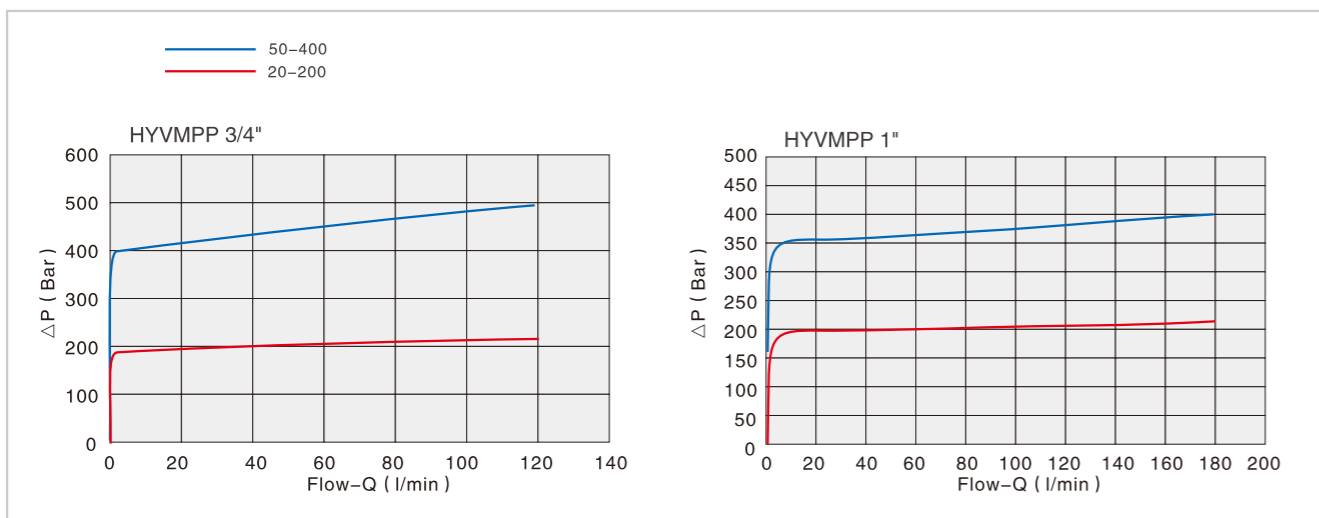
Applications:

Connect circuit port with pressure to P and tank port to T. The 1" size is supplied with double exit T (1 exit can be capped according with mounting needs).

Code symbol



Pressure drops curve



Differential Type Relief Valves

External dimensions

