

Dual Cross Relief Valve Flangeable On Danfoss Motors Oms Omp/Omr – omt

Technical specification



Specification	1/2" OMS	1/2" OMS/OMR	3/4" OMT
Max.flow (L/min)	50	60	100

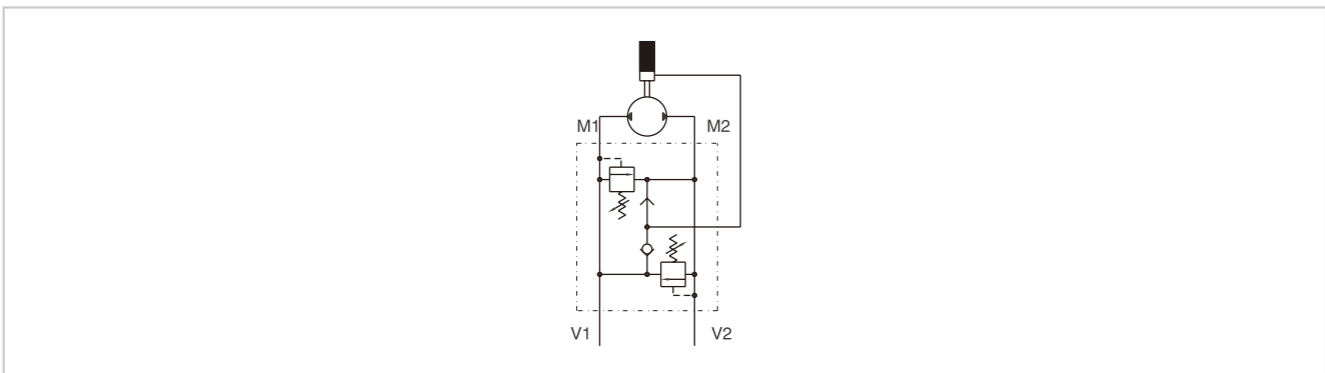
SPRINGS	Setting range(Bar)	10-50	20-100	10-180 Standard	50-250	80-300
	Pressure increase (Bar/turn)Q=4L/min	7	12	30	45	50
	Standard setting (Bar)	30	75	90	130	150

★ For Setting less than 70Bar Q=12L/min

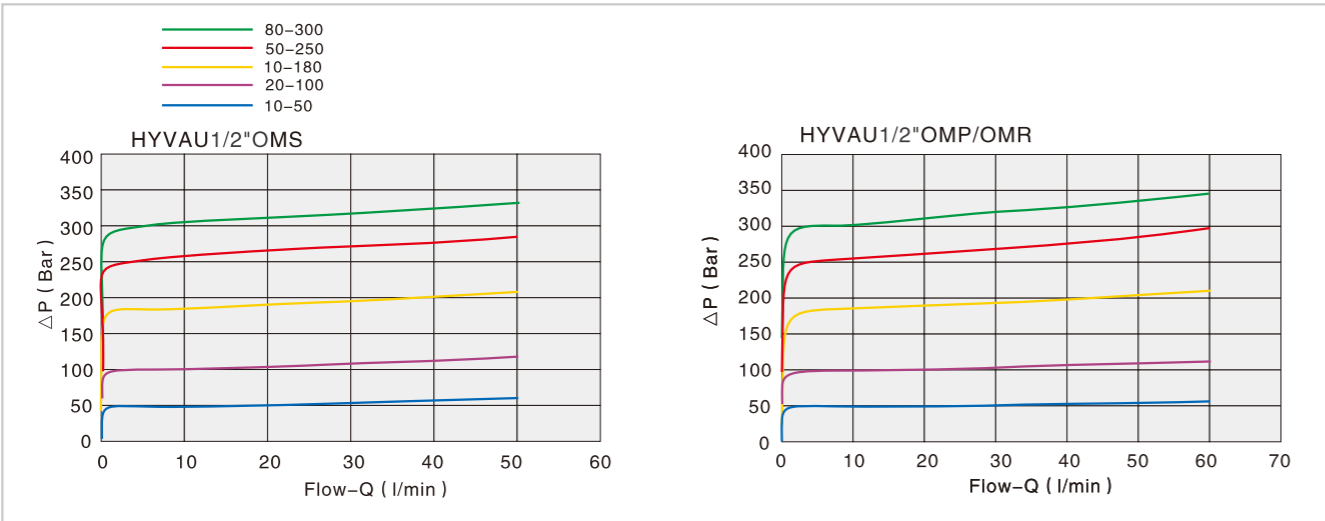
Use and operation:
 Made up by 2 relief valves with crossed tank, this valve is used to block pressure to a certain setting in the 2 ports of an actuator/ hydraulic motor. It's ideal to provide protection against sudden shock pressures and to adjust different pressures in the 2 ports of an hydraulic circuit as well. Direct flange is ideal for Danfoss motors type OMS, OMP-OMR and OMT and provides a maximum safety, very low pressure drops and solid installation.

Applications:
 Flange M1 and M2 directly to the motor and connect ports V1 and V2 to pressure flow.

Code symbol

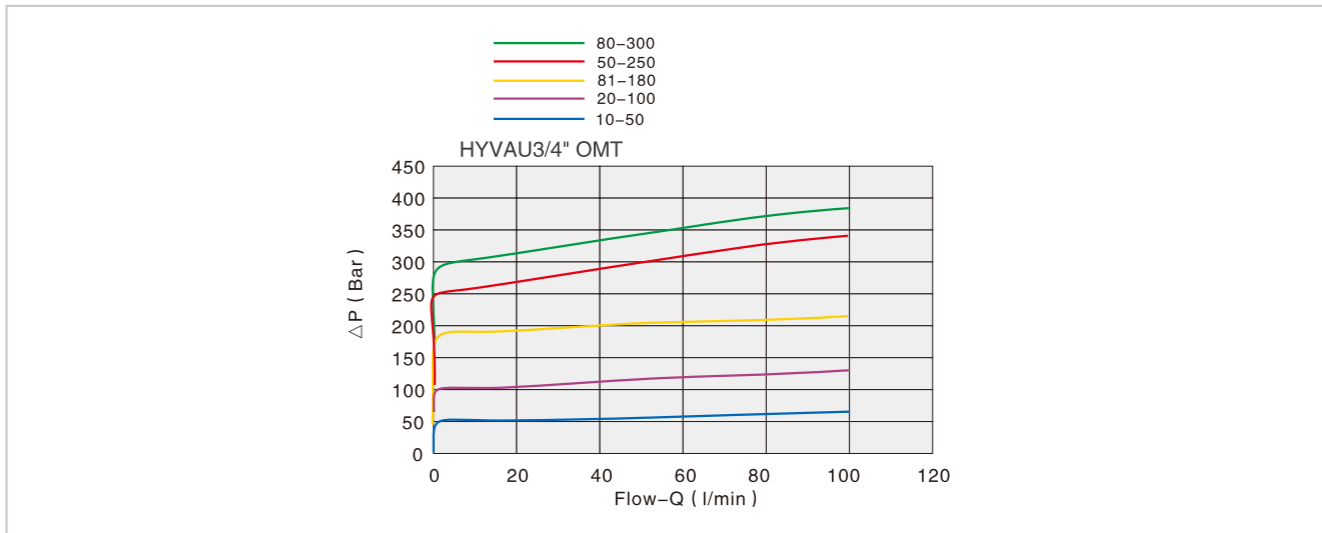


Pressure drops curve



Dual Cross Relief Valve Flangeable On Danfoss Motors Oms Omp/Omr – omt

Pressure drops curve



External dimensions

