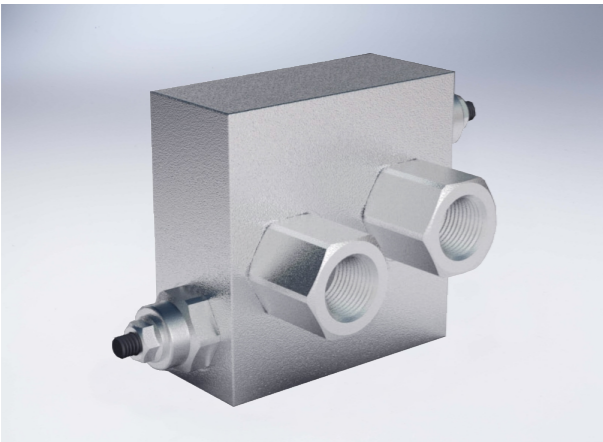


Dual Cross Relief Valve Flangeable On Samhydraulik Motors Ag-ar

Technical specification



Specification	1/2" AG-AR				
Max.flow (L/min)	60				

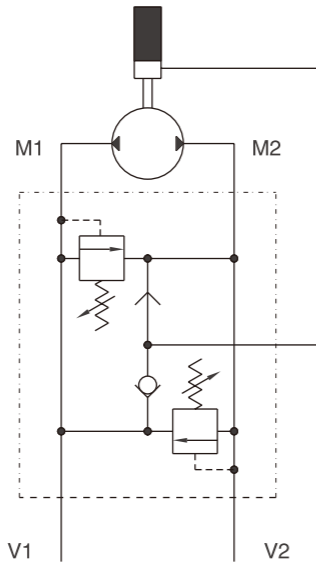
SPRINGS	Setting range(Bar)	10-50	20-100	10-180 Standard	50-250	80-300
	Pressure increase (Bar/turn)Q=4L/min	7	12	30	45	50
	Standard setting (Bar)	30	75	90	130	150

★ For Setting less than 70Bar Q=12L/min

Use and operation:
 Made up by 2 relief valves with crossed tank, this valve is used to block pressure to a certain setting in the 2 ports of an actuator/ hydraulic motor. It's ideal to provide protection against sudden shock pressures and to adjust different pressures in the 2 ports of an hydraulic circuit as well. Direct flange is ideal for Samhydraulik motors type AG-AR and provides a maximum safety, very low pressure drops and solid installation.

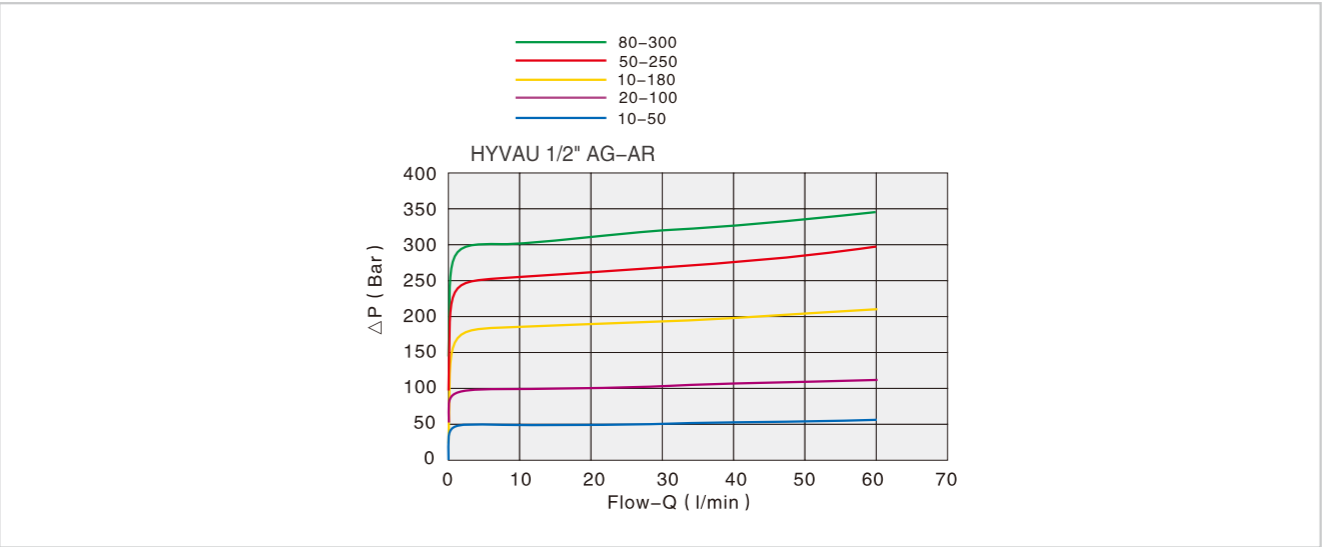
Applications:
 Flange M1 and M2 directly to the motor and connect ports V1 and V2 to pressure flow.

Code symbol

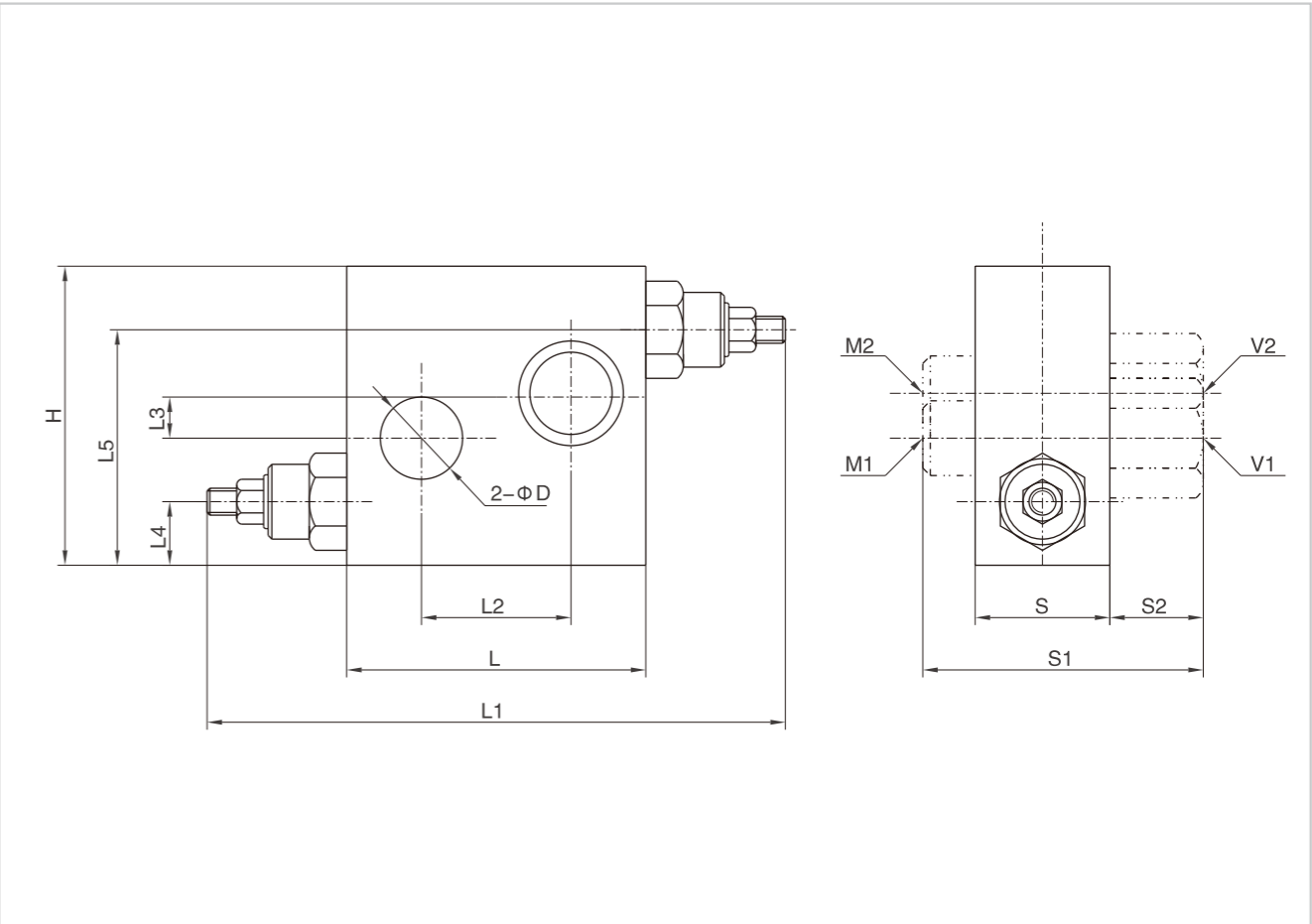


Dual Cross Relief Valve Flangeable On Samhydraulik Motors Ag-ar

Pressure drops curve



External dimensions



Type	V1/V2	L	L1	L2	L3	L4	L5	D	H	S	S1	S2
HYVAU 1/2" AG-AR	G 1/2"	80	140	40	8	16.75	63.25	21.5	80	35	72	25