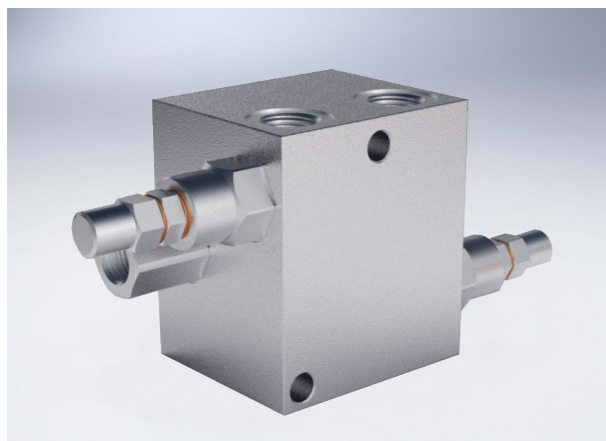


## Dual Cross Relief Valve With Pilot Check Valve

### Technical specification



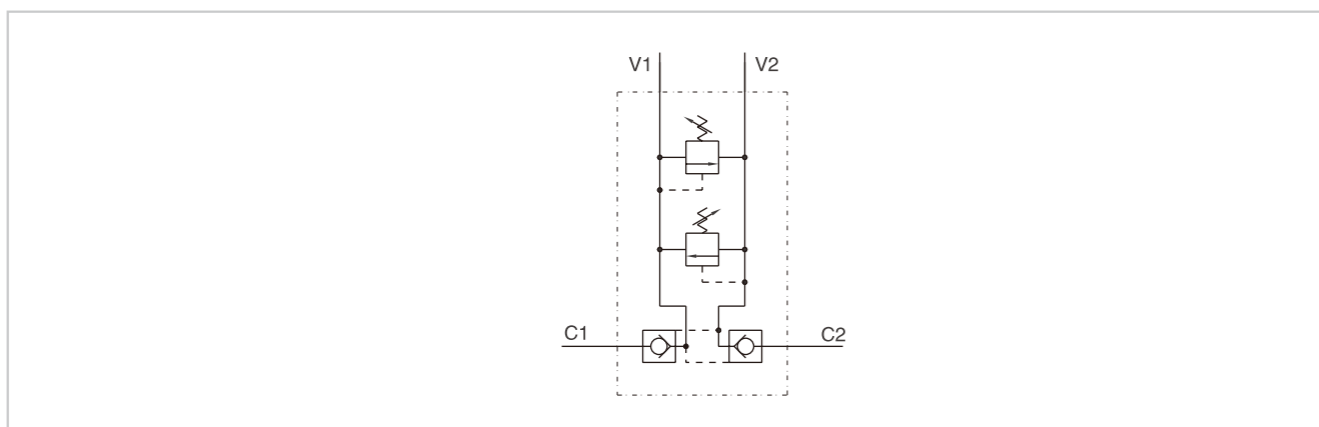
Specification		3/8"
Max.flow (L/min )		35

SPRINGS	Setting range(Bar)	10-180
	Pressure increase (Bar/turn)Q=4L/min	30
	Standard setting (Bar)	90

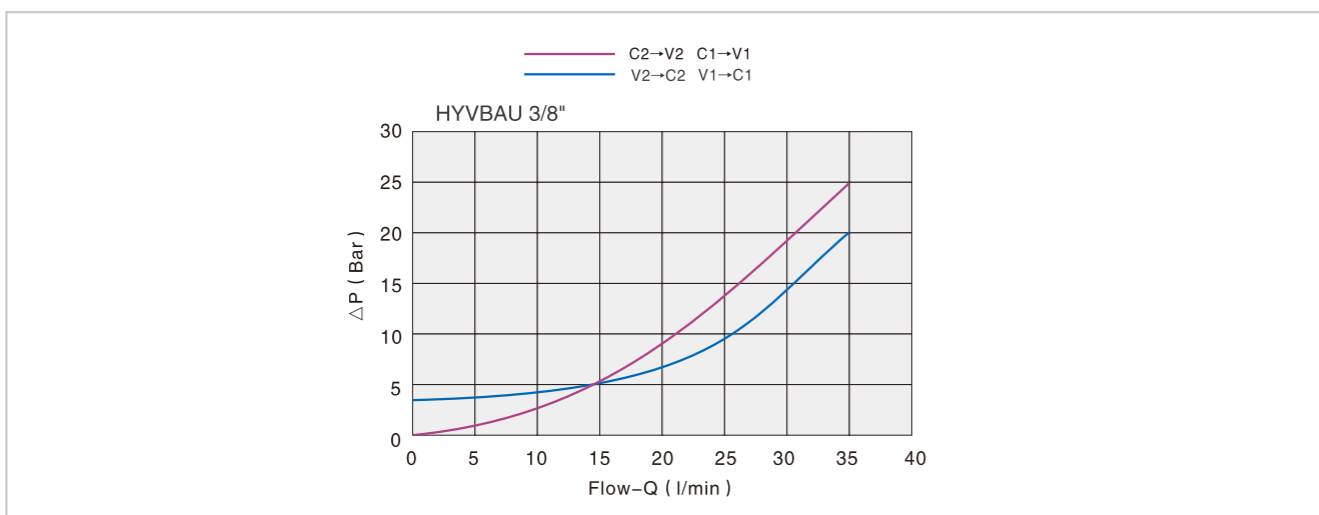
**Use and operation:**  
 Made up by 1 double pilot check valve together with one double cross relief valve, this valve enables to block the actuator in one position and to limit inlet pressure to the actuator.

**Applications:**  
 Connect V1 and V2 to the pressure flow and C1 and C2 to the actuator.

### Code symbol

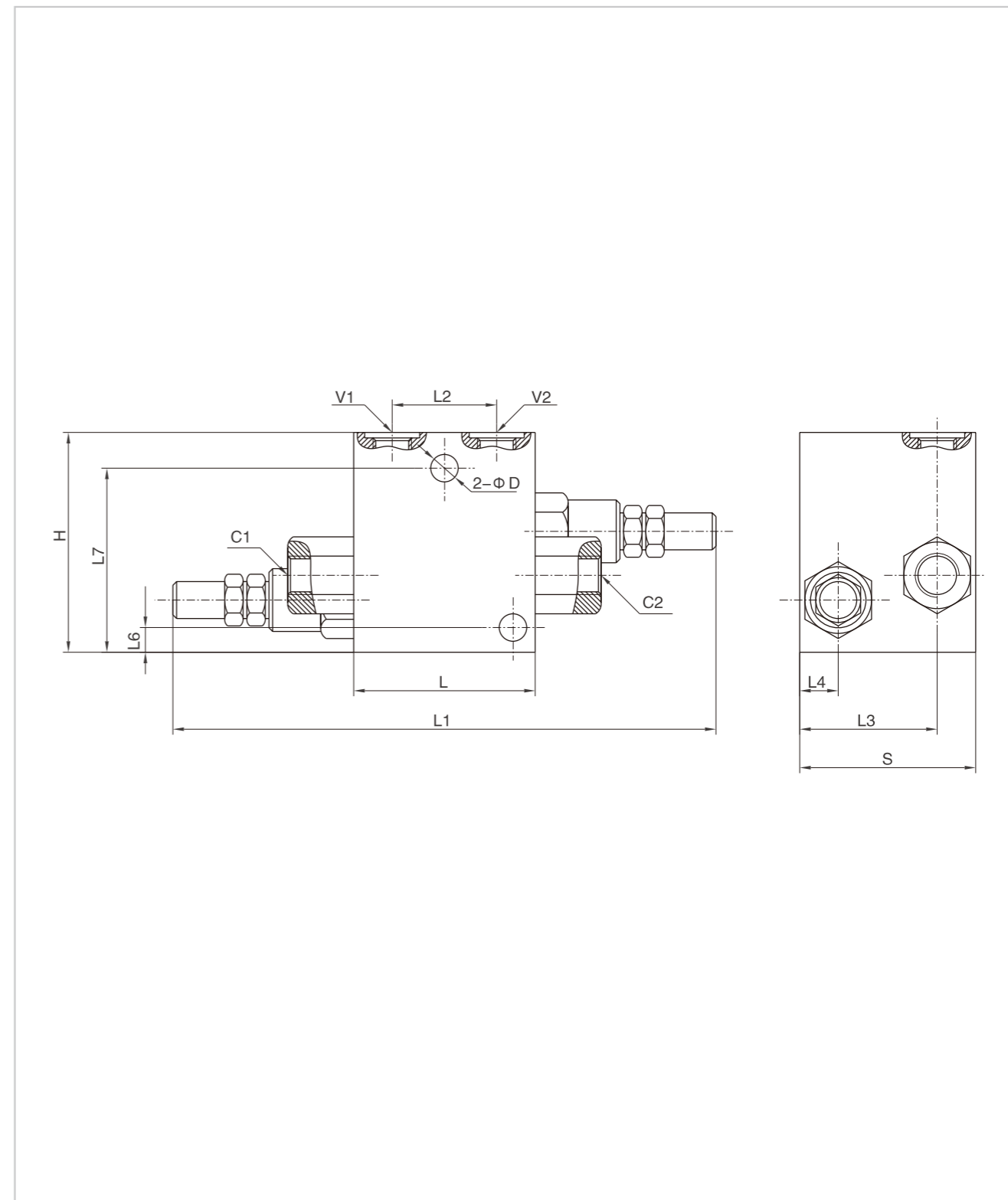


### Pressure drops curve



## Dual Cross Relief Valve With Pilot Check Valve

### External dimensions



Type	V1/V2/C1/C2	L	L1	L2	L3	L4	L5	L6	L7	D	H	S
HYVBAU 3/8"	G 3/8"	70	194	39	45	15	7	6.5	71.5	8.5	80	60