

Sequence Valves

Technical specification



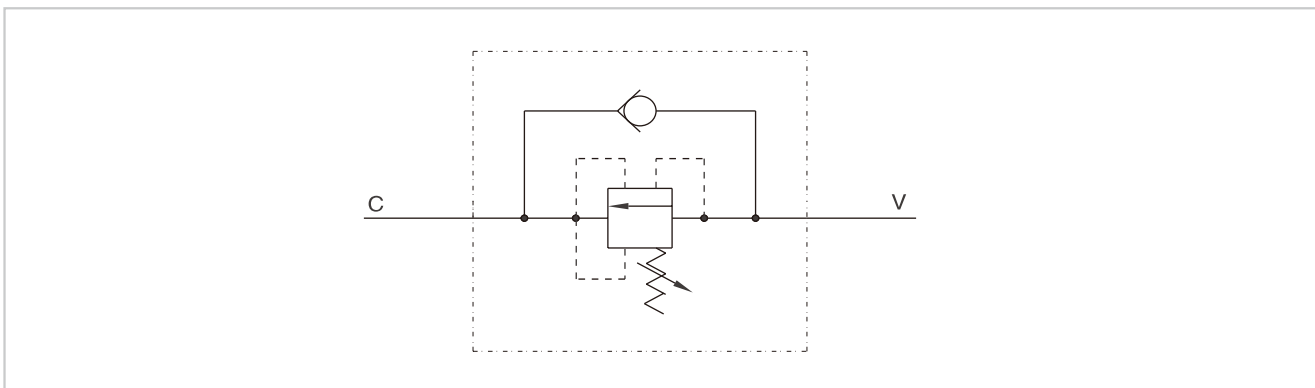
Specification	3/8"	3/8"
Max.flow (L/min)	35	35

SPRINGS	Setting range(Bar)	10-50	20-100	10-180 Standard	50-250	80-300
	Pressure increase (Bar/turn)Q=4L/min	7	12	30	45	50
	Standard setting(Bar)	30	75	90	130	150

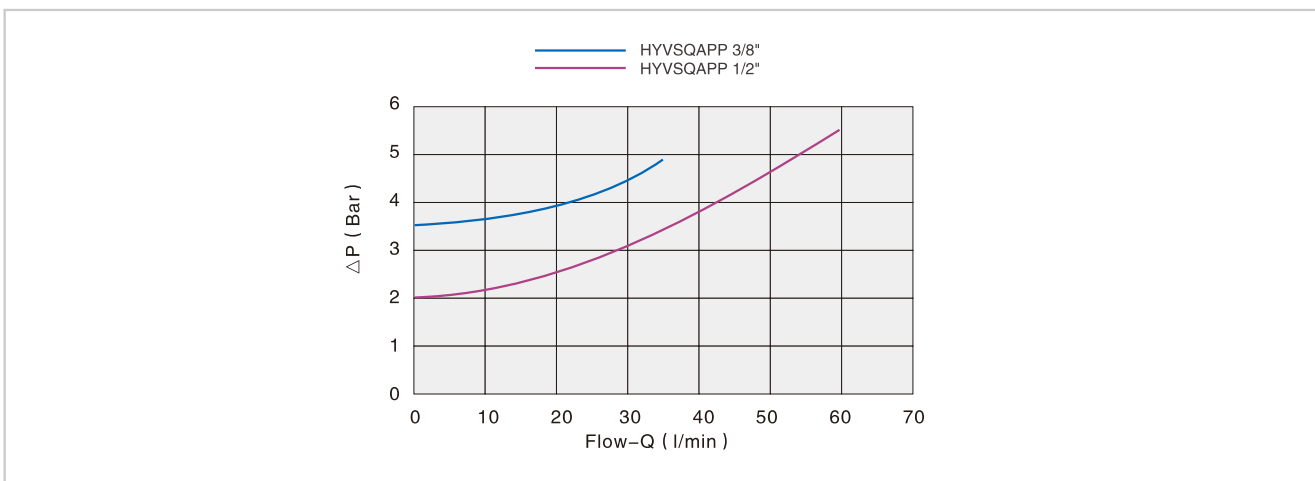
Use and operation:
Sequence valve is used to feed 2 cylinders in sequence: it provides flow to the secondary circuit when a primary circuit function has been completed reaching the pressure setting. Return flow is free. Being insensitive to back pressures, it allows to use the circuit pressure to control both the actuators.

Applications:
For use with 2 actuators, follow the mounting instructions indicated in the scheme.
For different uses, mount the valve keeping into consideration that, when the valve reaches the setting pressure, the flow goes from V towards C, whilst flow is free from C to V.

Code symbol

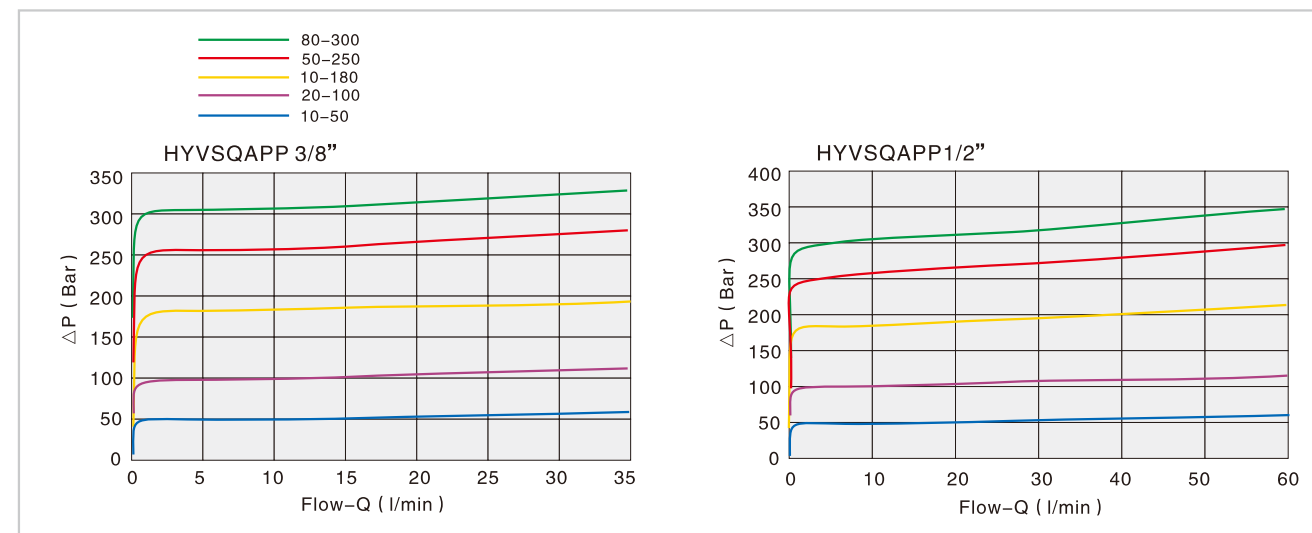


Pressure drops curve

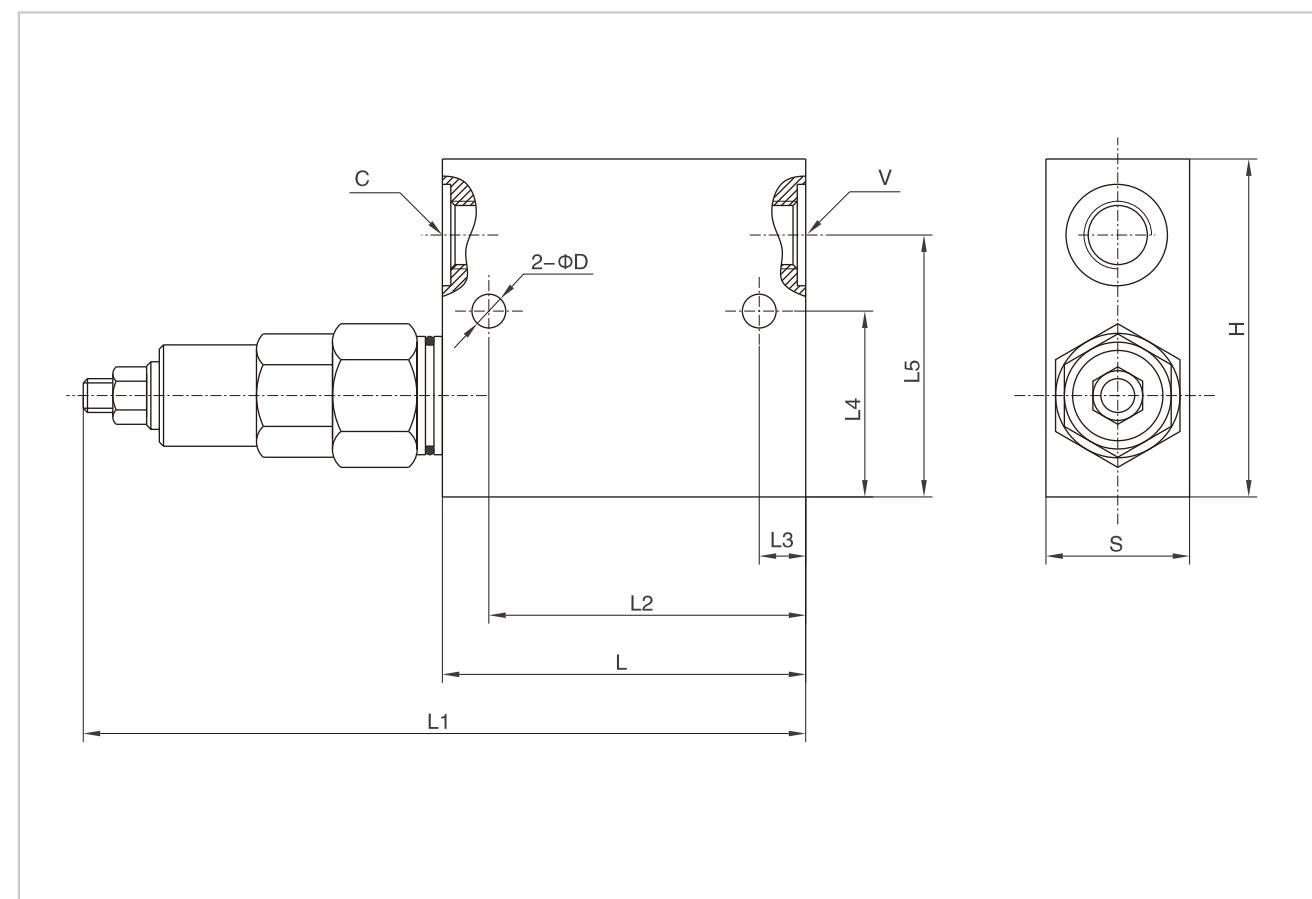


Sequence Valves

Pressure drops curve



External dimensions



Type	V/C	L	L1	L2	L3	L4	L5	D	H	S
HYVSQAPP 3/8"	G 3/8"	74	149	55	12	39	56	8.5	70	30
HYVSQAPP 1/2"	G 1/2"	80	155	55	18	37	55	8.5	70	30