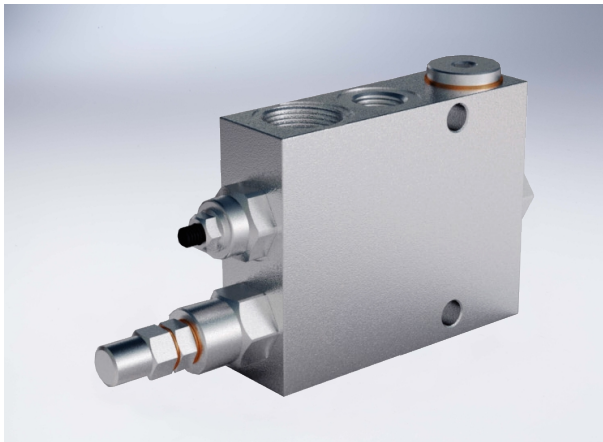


## Two Pump "Hi-low" Unloading Valves

### Technical specification



Specification		3/8"	1/2"	3/4"
Max flow ( L/min )	AP	15	25	30
	BP	30	45	80
	T	40	65	100
Max pressure (Bar)		350		
Standard	AP	20-80		
Springs	BP	50-350		

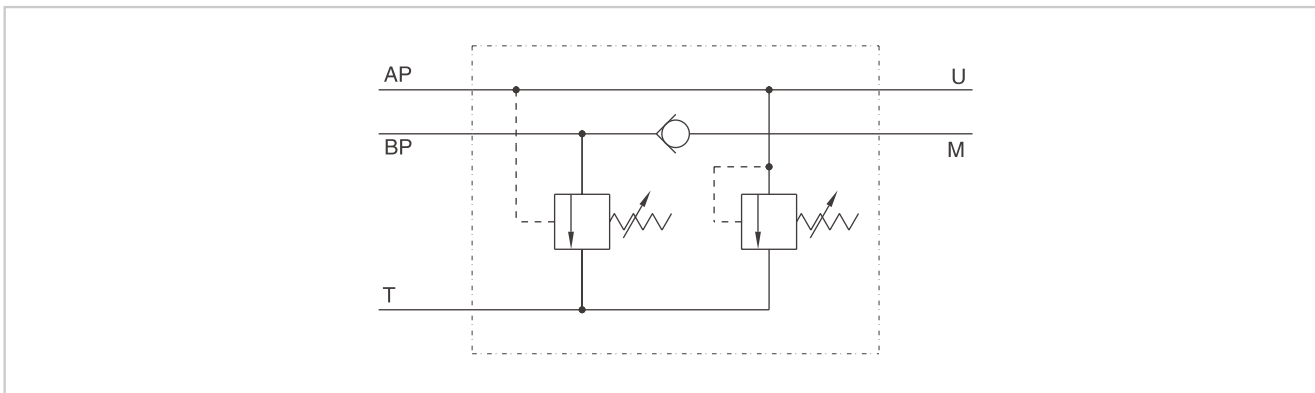
#### Use and operation:

This valve is used in a 2 parallel-working pumps circuit in order to release the excess of the higher flow pump to the tank when this gets the required pressure setting. Since this moment and on the actuator works with the lower flow pumps at higher pressure, consuming less energy.

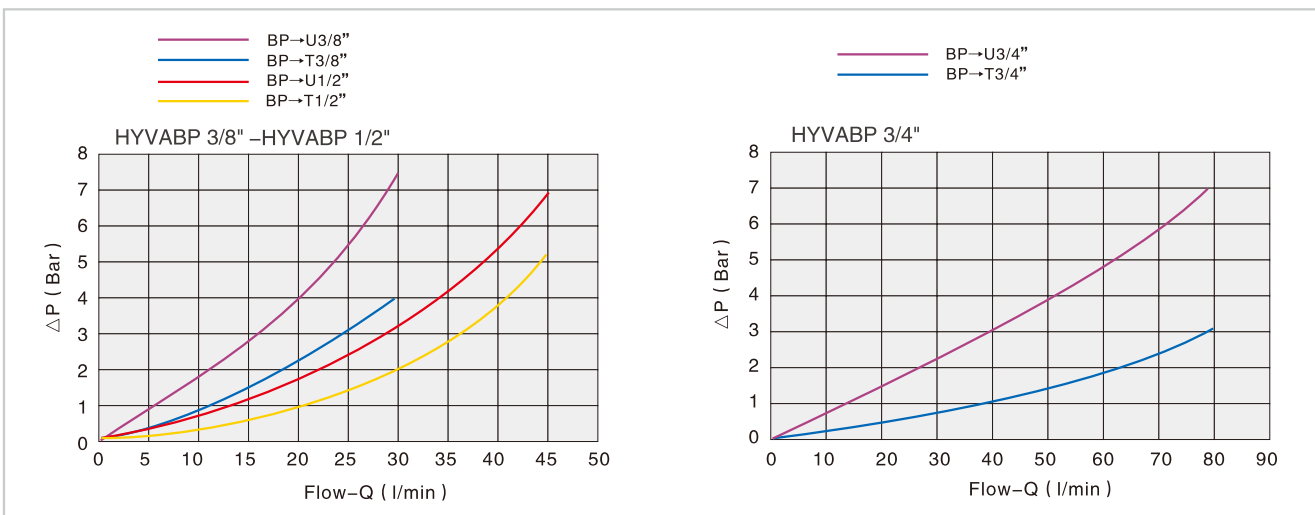
#### Applications:

Connect BP to the higher flow pump, AP to the lower flow pump, T to the tank, M to the eventual manometer and U as for necessity.

### Code symbol

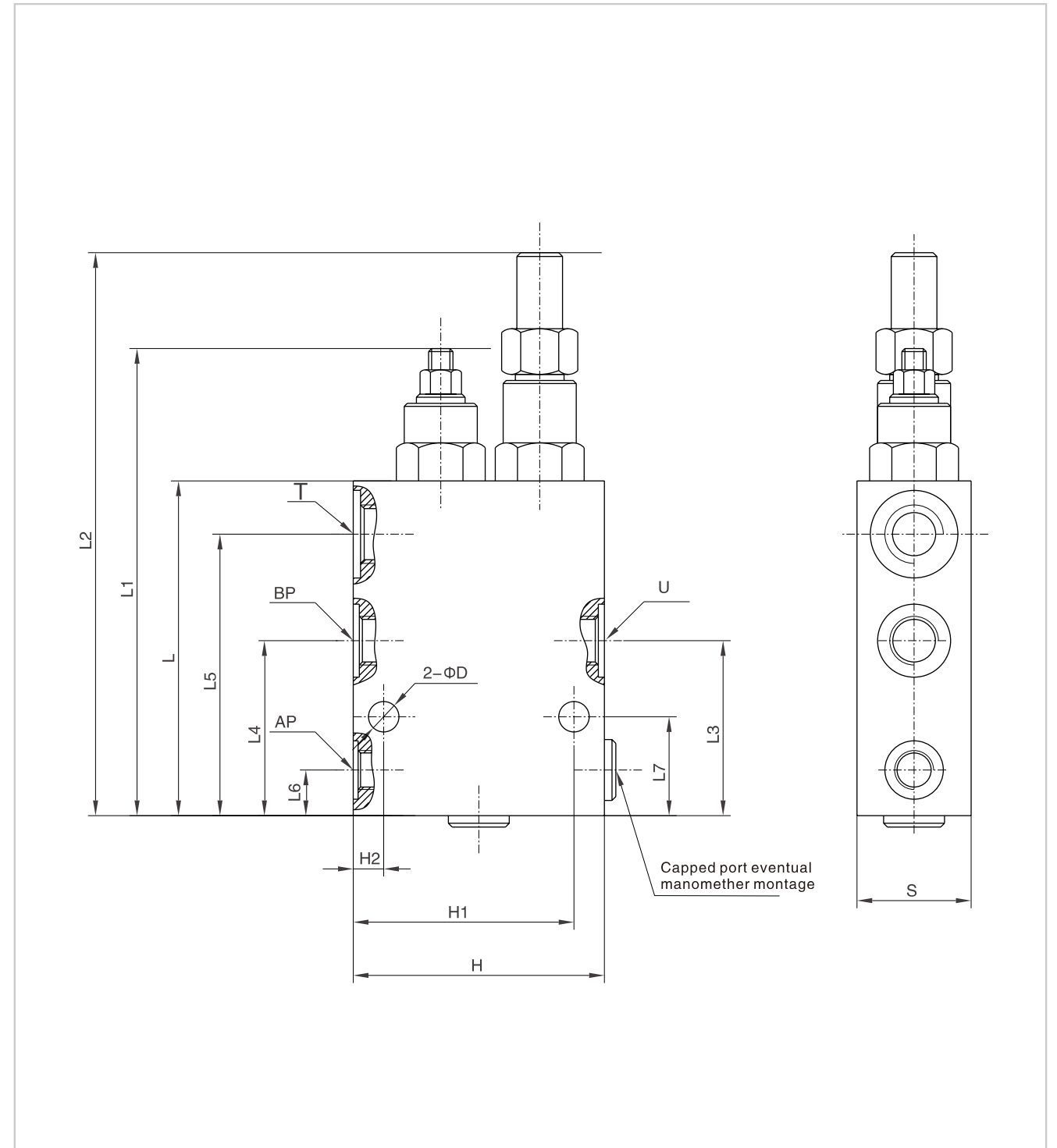


### Pressure drops curve



## Two Pump "Hi-low" Unloading Valves

### External dimensions



Type	AP	BP	U	T	L	L1	L2	L3	L4	L5	L6	L7	D	H	H1	H2	S
HYVABP 3/8"	G 1/4"	G 3/8"	G 3/8"	G 1/2"	100	142	155	50	30	20	13	31	8.5	80	73.5	8.5	30
HYVABP 1/2"	G 3/8"	G 1/2"	G 1/2"	G 3/4"	105	147	160	51	51	87	15	32.5	8.5	90	82	17	35
HYVABP 3/4"	G 1/2"	G 3/4"	G 3/4"	G 1"	140	187	212	87.5	42.5	20	20	5	8.5	100	92	27	40