

# Two Pump "Hi-low" Unloading Valves Flangeable (Base Ng6-Ng10 and Ng16)

## Technical specification

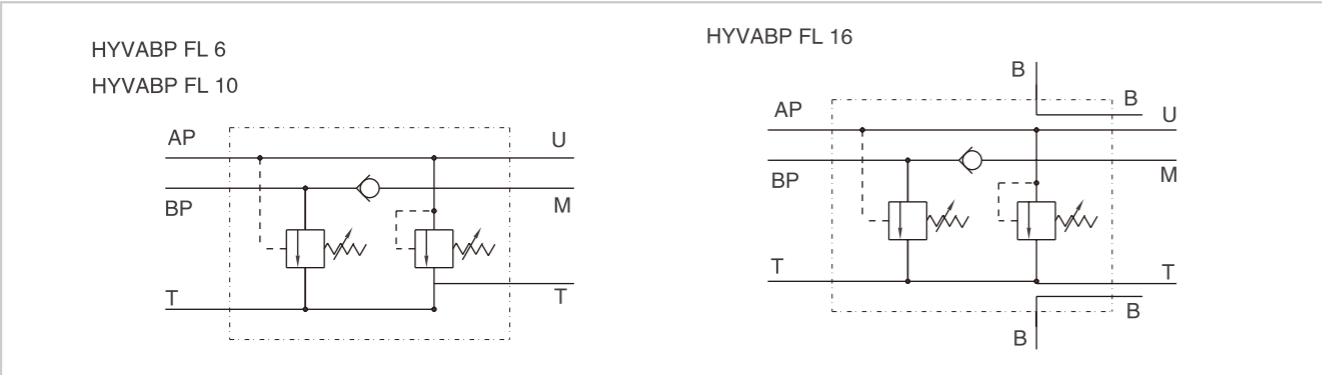


Specification		FL 6	FL 10	FL 16
Max flow ( L/min )	AP	15	25	35
	BP	30	45	80
	T	40	65	100
Max pressure (Bar)		350		
Standard	AP	20-80		
Springs	BP	50-350		

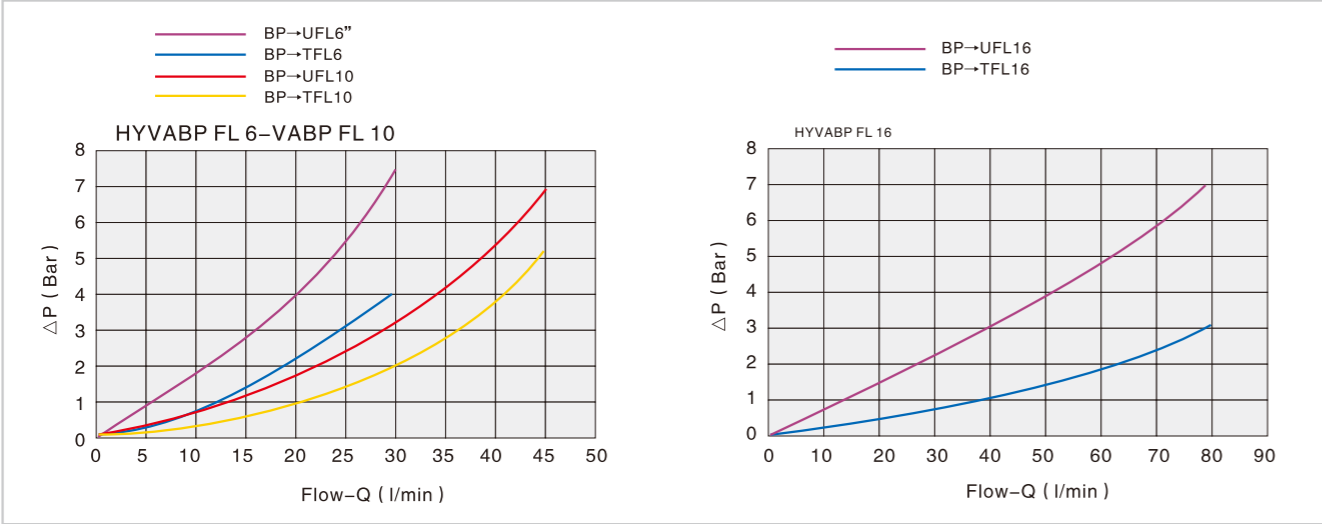
**Use and operation:**  
This valve is used in a 2 parallel-working pumps circuit in order to release the excess of the higher flow pump to the tank when this gets the required pressure setting. Since this moment and on the actuator works with the lower flow pumps at higher pressure, consuming less energy. It's ideal for direct flange -mounting on solenoid valves.

**Applications:**  
Fix the valve to the pressure flow by connecting BP to the higher flow pump, AP to the lower flow pump, T to the tank and M to the eventual manometer. Flange the solenoid valve to the VABP and connect ports A and B to the actuator.

## Code symbol

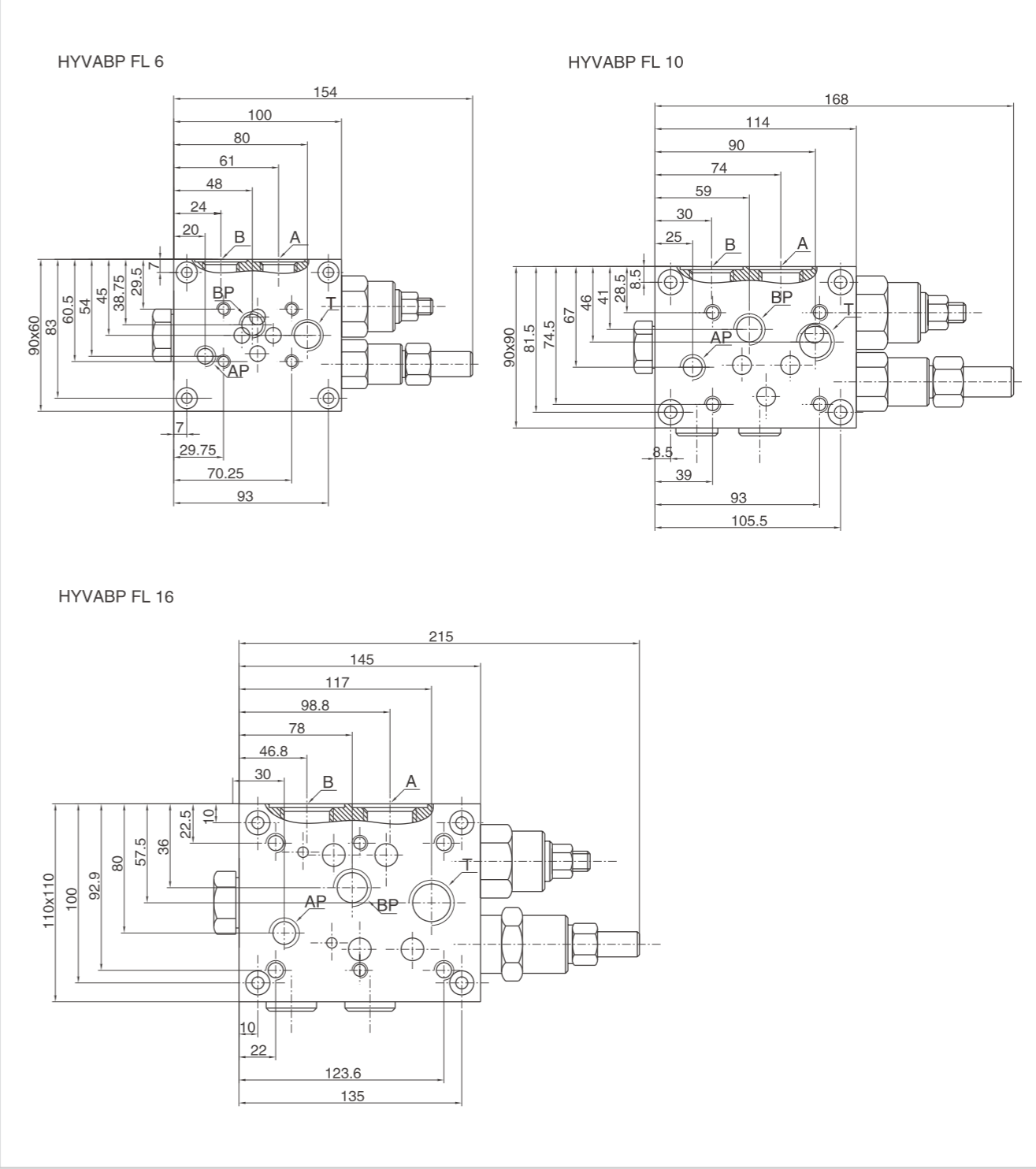


## Pressure drops curve



# Two Pump "Hi-low" Unloading Valves Flangeable (Base Ng6-Ng10 and Ng16)

## External dimensions



Type	A	B	T	AP	BP
HYVABP FL 6	G 1/2"	G 1/2"	G 1/2"	G 1/4"	G 3/8"
HYVABP FL 10	G 3/4"	G 3/4"	G 3/4"	G 3/8"	G 1/2"
HYVABP FL 16	G 1"	G 1"	G 1"	G 1/2"	G 3/4"