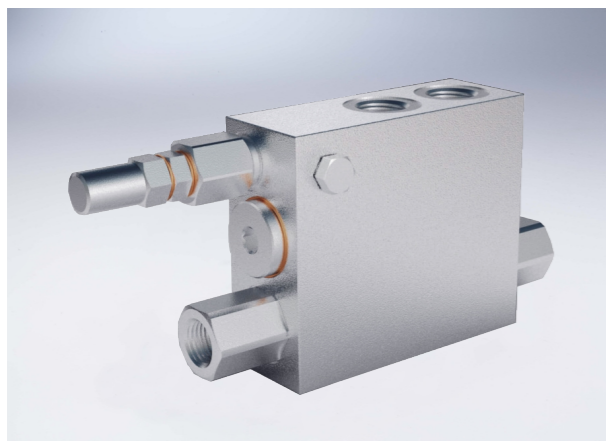


Single Acting Plough Overturning Valves

Technical specification



Specification	40/50 SE	60/80 SE
Max adjustable pressure (Bar)	200	
Max pressure (Bar)	400	

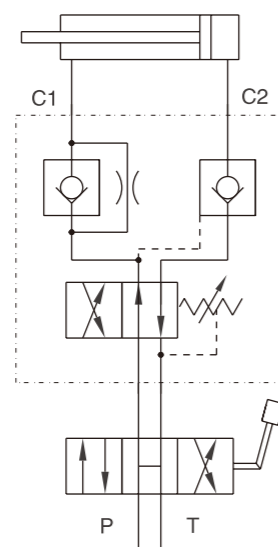
Use and operation:

This valve has been realised for use on cylinders for reversible plough to obtain the automatic oil backflow and therefore the reversal of the motion of the hydraulic cylinder that makes the plough rotating. It is provided with a single pilot check valve which guarantees safety just on the block side, whilst on the stem side it must be leaned on the plough mechanical locks. Assembly on balanced and light plough with internal diameters 40/50 millimetres and 60/80 millimetres is recommended.

Applications:

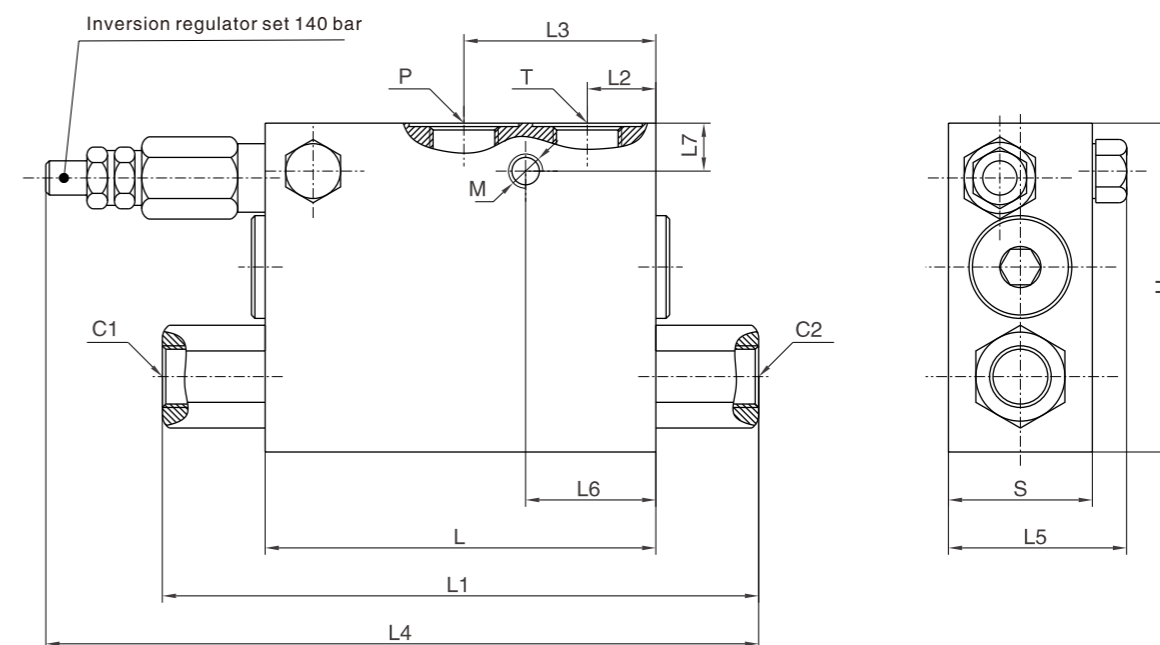
Connect C1 to the cylinder's stem, C2 to the block, P and T to the machine inlet. Thanks to its shape, it can be in-line assembled on a hydraulic cylinder or directly fixed on the plough through the threaded hole made on the body.

Code symbol



Single Acting Plough Overturning Valves

External dimensions



Type	C1/C2/P/T	L	L1	L2	L3	L4	L5	L6	L7	M	H	S
HYVRA 40/50 SE	G 3/8"	94	142	16.5	46.5	177	42	31.5	12.5	M8	80	35
HYVRA 60/80 SE	G 1/2"	94	142	16.5	46.5	177	42	31.5	12.5	M8	80	35