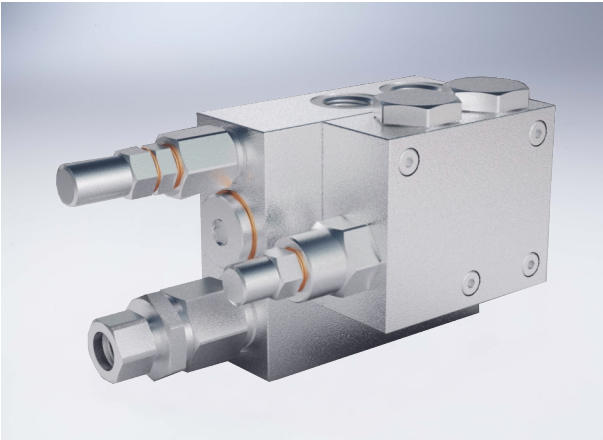


# Double Acting Plough Overturning Valves With Relief Valve

## Technical specification

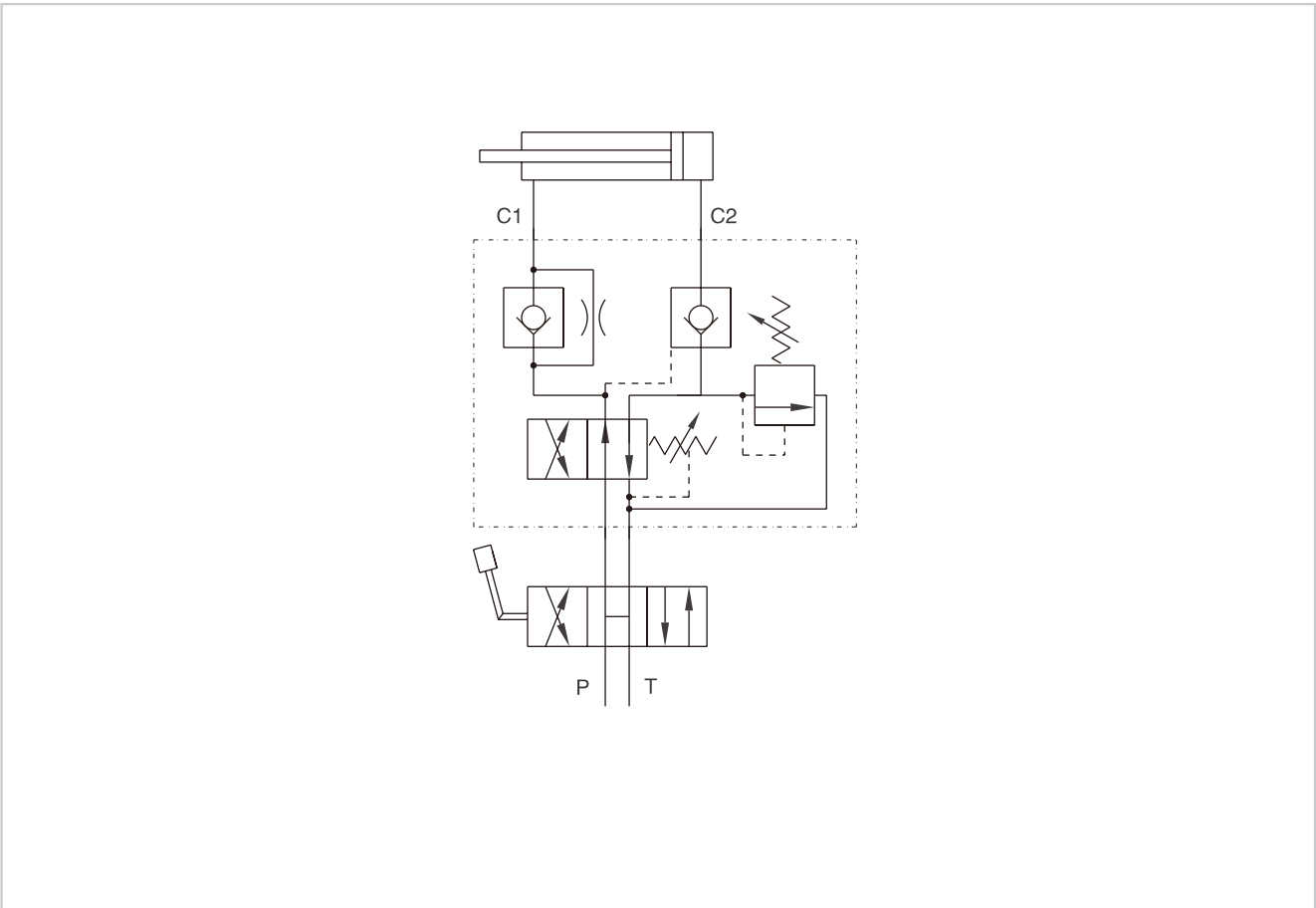


Specification	60/80 DE+VMP	80/100 DE+VMP	110/110 DE+VMP	110/130 DE+VMP
Max adjustable pressure (Bar)	250			
Max pressure (Bar)	400			

**Use and operation:**  
 This valve has been realised for use on cylinders for reversible plough to obtain the automatic oil backflow and therefore the motion reversal of the hydraulic cylinder that makes the plough rotating. It is provided with a double pilot check valve and with a relief valve that enables to reduce the thrust pressure (block side) in order not to damage the mechanical locks and the plough's head. The motion reversal of the piston is made through a differential type relief valve exactly in the dead point of the plough, generating more power and speed. It's ideal for assembly on heavy and unbalanced plough with the following internal diameters: 40/50, 60/80, 80/100, 100/110, 110/130 mm.

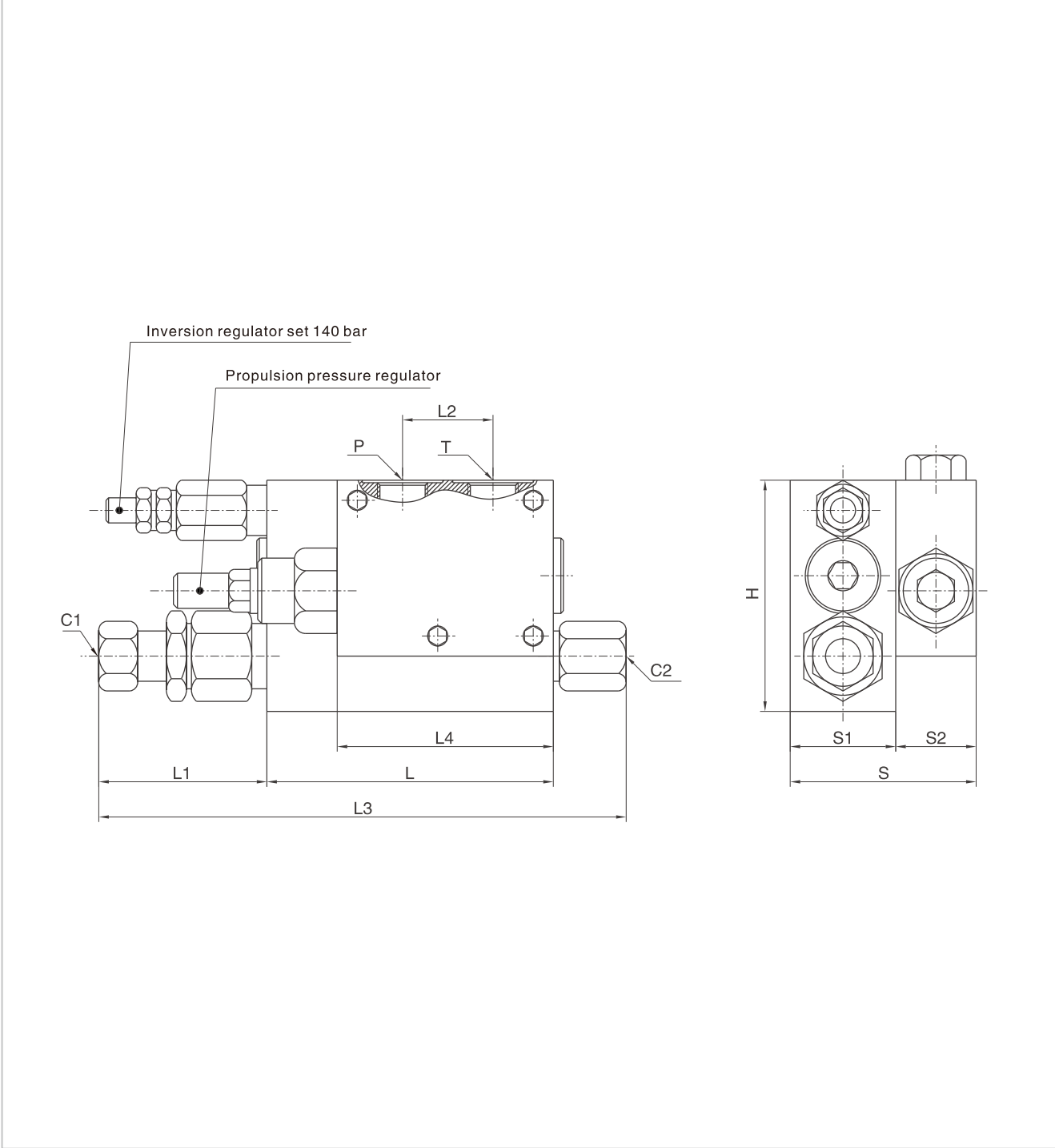
**Applications:**  
 Connect C1 to the cylinder's stem, C2 to the block, P and T to the machine inlet. Thanks to its shape, it can be in-line assembled on a hydraulic cylinder or directly fixed on the plough through the threaded hole made on the body.

## Code symbol



# Double Acting Plough Overturning Valves With Relief Valve

## External dimensions



Type	C2/P/T	C1	L	L1	L2	L3	L4	H	S	S1	S2
HYVRAP 60/80 DE+VMP	G 3/8"	Φ12	94	58	30	176	72	80	65	35	30
HYVRA 80/100 DE+VMP	G 3/8"	Φ12	94	58	30	176	72	80	65	35	30
HYVRAP 100/110 DE+VMP	G 3/8"	Φ12	94	58	30	176	72	80	65	35	30
HYVRA 110/130 DE+VMP	G 3/8"	Φ12	94	58	30	176	72	80	65	35	30