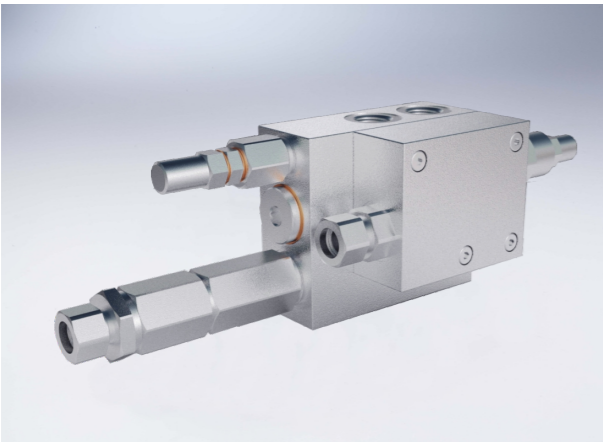


# Double Acting Plough Outside Drills Overturning Valves For Cylinder With Memory And Without Memory

## Technical specification

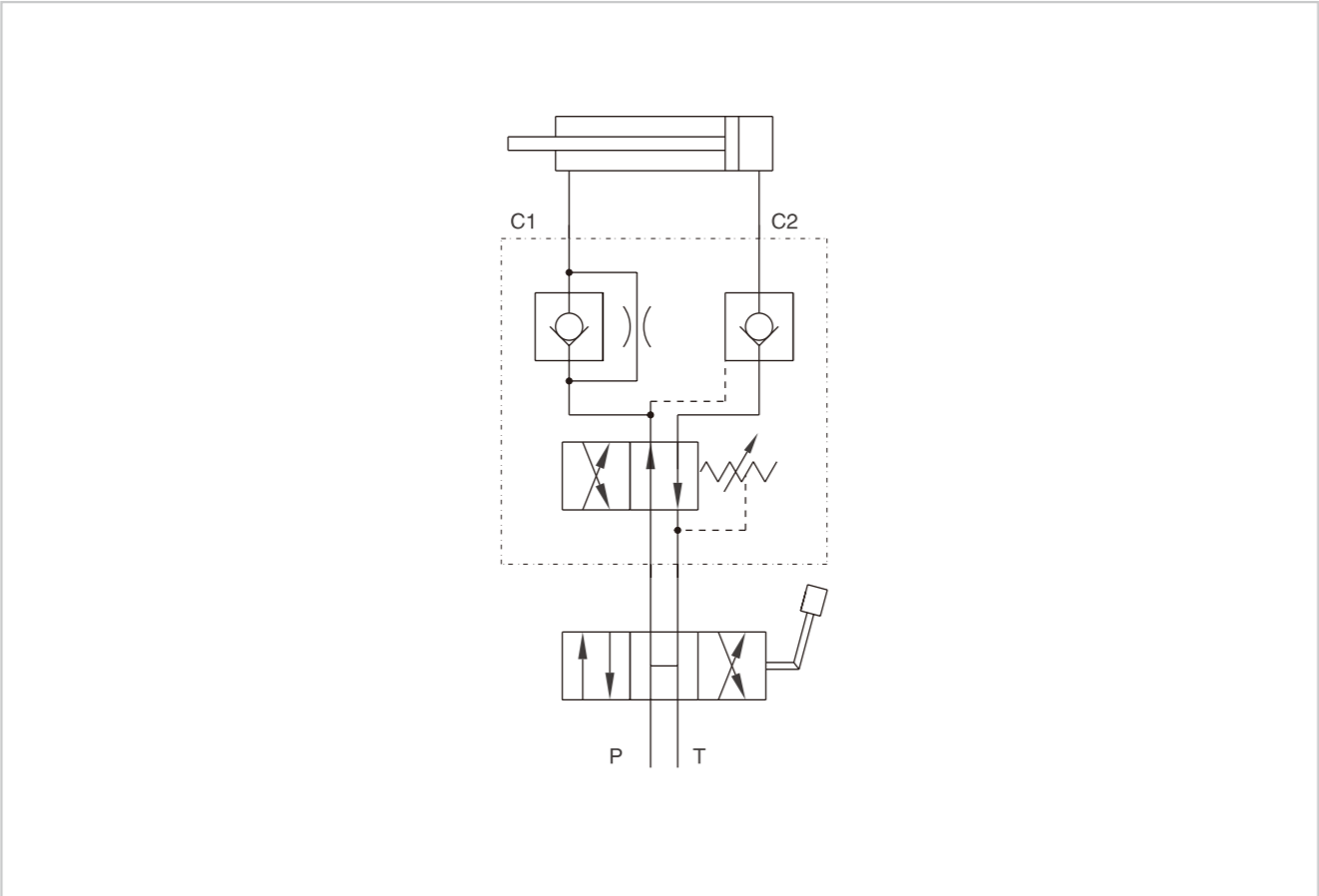


Specification	110/130 FSCM	110/130 FSSM
Max adjustable pressure (Bar)	250	
Max pressure (Bar)	400	

**Use and operation:**  
 Valves for actuators with memory (V0325): realised for use on cylinders with memory for outside drills reversible ploughs, it's provided with a dual cross relief valve which provides protection against tear's shocks when the plough exceeds the dead point.  
 Valves for actuators without memory (V0326): realised for use on cylinders without memory for outside drills reversible ploughs, it is provided with a dual cross relief valve and with a relief valve: this enables to reduce the thrust pressure (block side) in order not to damage the mechanical locks and the plough's head. Both systems are provided with a fixed compensated flow control valve which allows to keep a constant speed whether the plough works inside the drills or outside.

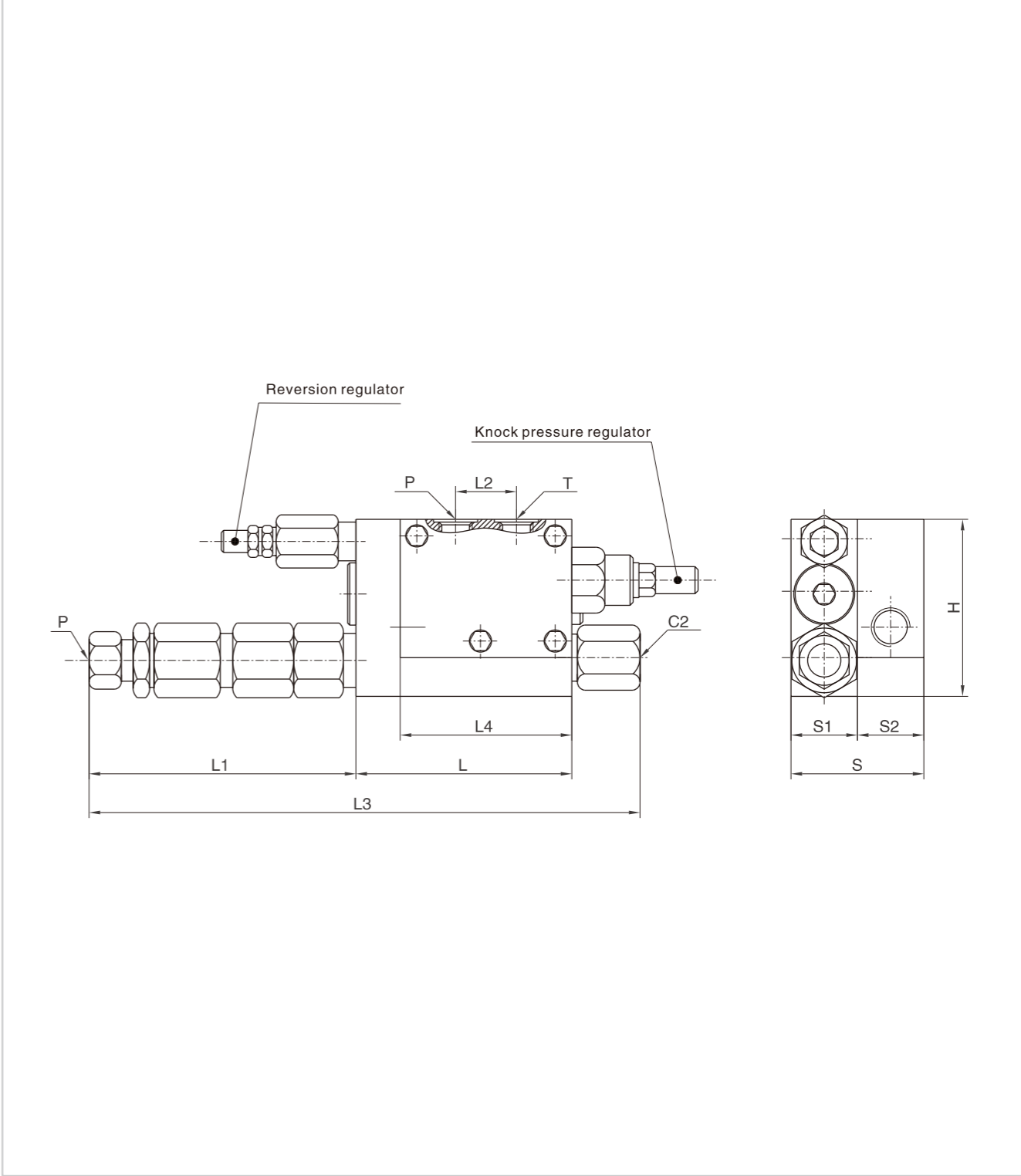
**Applications:**  
 Connect C1 and the dual cross relief valve to the cylinder from the stem side through the double holed screw ( supplied with the valves) and double banjos, connect C2 to the cylinder from the block's side, P and T to the machine inlet

## Code symbol



# Double Acting Plough Outside Drills Overturning Valves For Cylinder With Memory And Without Memory

## External dimensions



Type	C2/P/T	C1	L	L1	L2	L3	H	S	S1
HYVRAP 110/130 FSCM	G 3/8"	Φ12	94	123	30	241	80	65	35
HYVRAP 110/130 FSSM	G 3/8"	Φ12	94	123	30	241	80	65	35