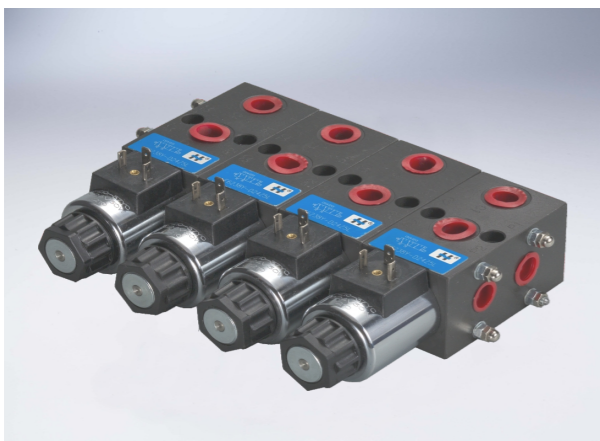


Selector Valve

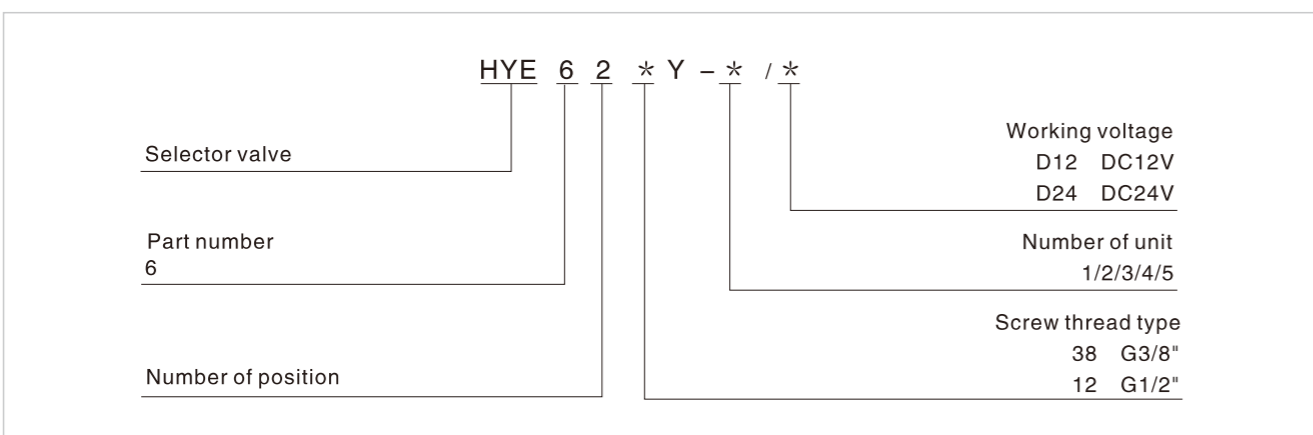
Technical specification



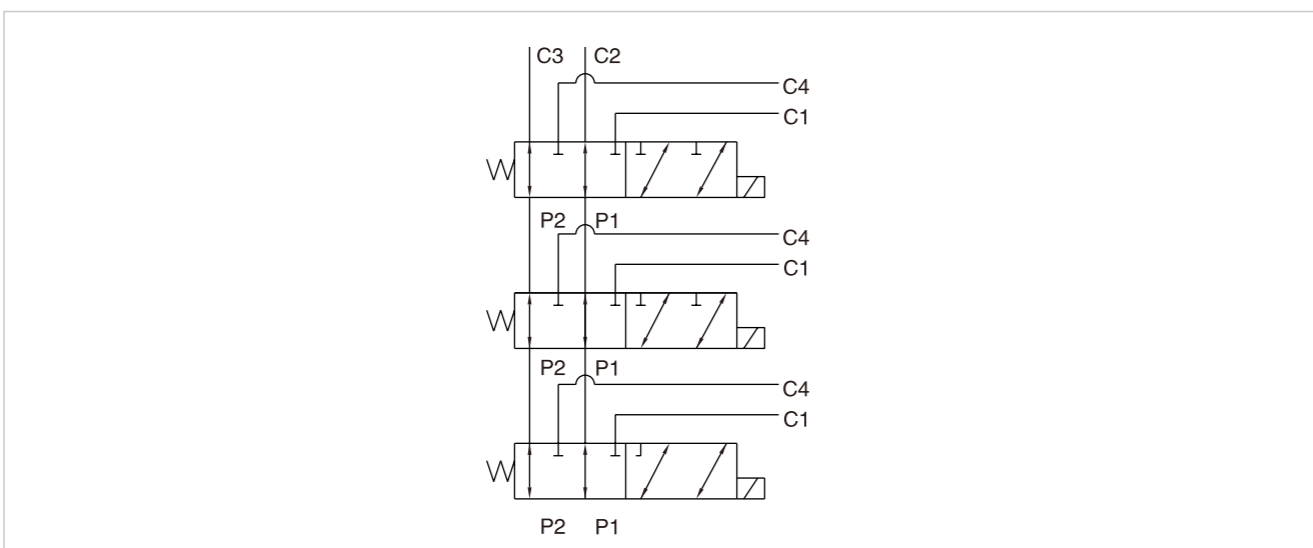
Specification	E6238Y	E6212Y
Working pressure (MPa)	21	
Max. flow (L/min)	40	60
Working fluid	Mineral oil; phosphate-ester	
Fluid temp (°C)	-20~+80	
Viscosity (mm ² /s)	-2.8~+500	
Weight (kg)	4	5

Features:
E62 uses solenoid to push the spool and change the direction of fluid flow, it can control the switch of oil circuit in the hydraulic system

Model description

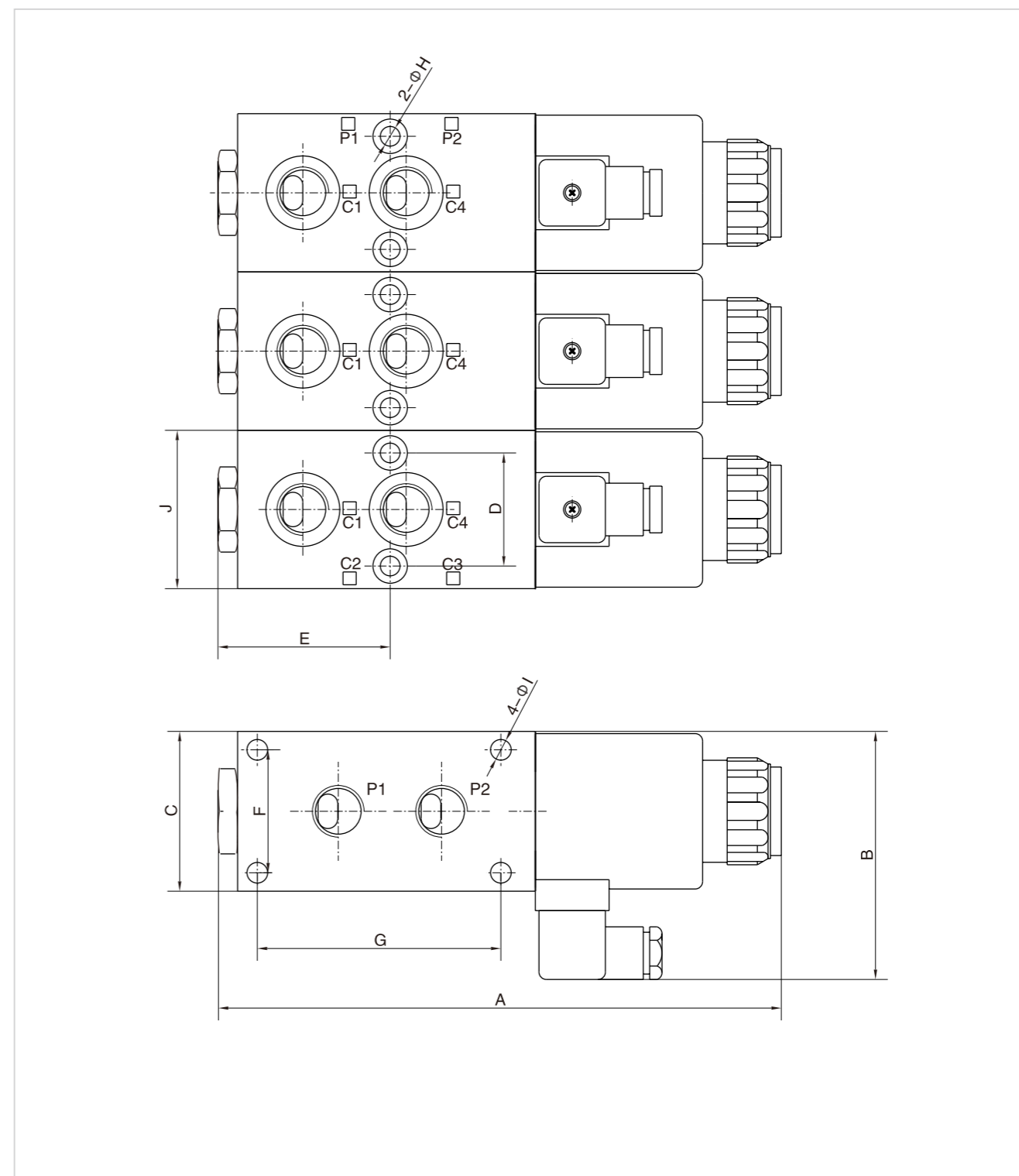


Code symbol



Selector Valve

External dimensions



Type	A	B	C	D	E	F	G	H	I	J
HYE6238Y	175.2	84	52	36	57.5	38	42	6.4	6	52
HYE6212Y	229	100.6	65	46	70	50	99	8	8.4	65