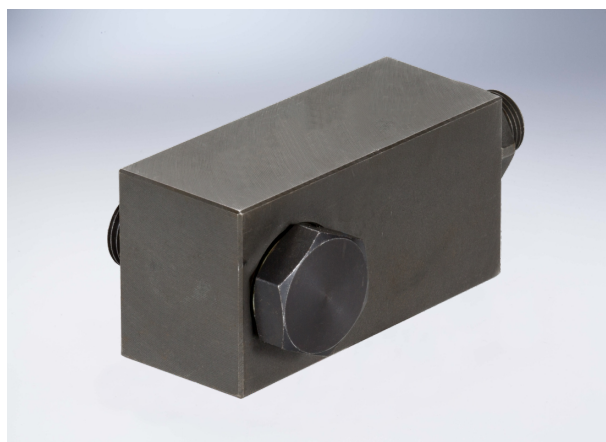


Hyvyzf Hydro-operated Directional Valve

Technical specification

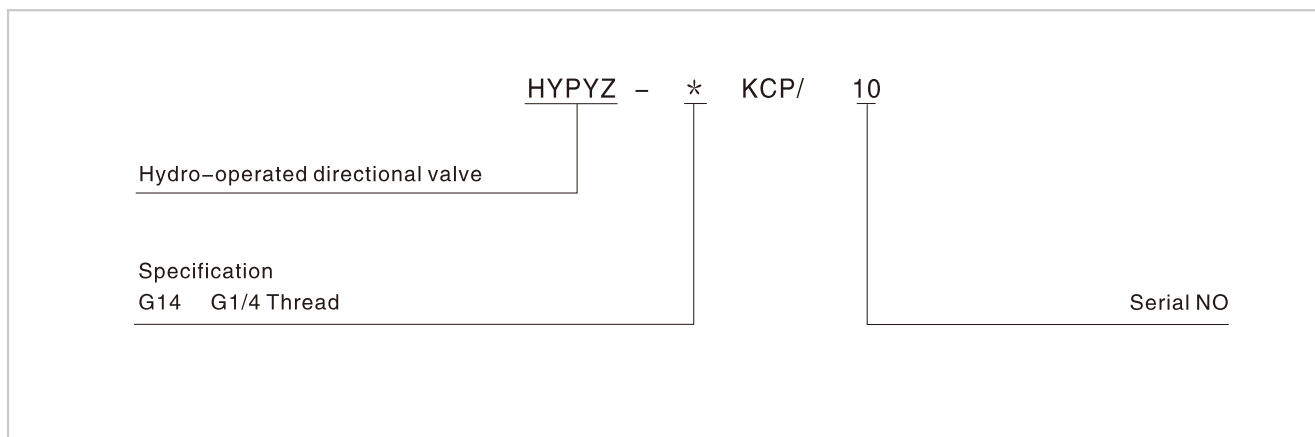


| | |
|------------------------------------|---|
| Model | HYVYF-G14KCP |
| Max Pressure (Mpa) | 315 |
| Max Flow (L/min) | 20 |
| Working fluid | Mineral oil, phosphate hydraulic oil |
| Fluid viscosity mm ² /s | 20~380 |
| Storage temp (°C) | -20~80 |
| Working temp (°C) | -10~60 |
| Cleanliness | The max allowed cleanliness of the oil shall be as per Standard NAS1638, grade IX, recommendable filtering precision Min β ₁₀ ≥75. |

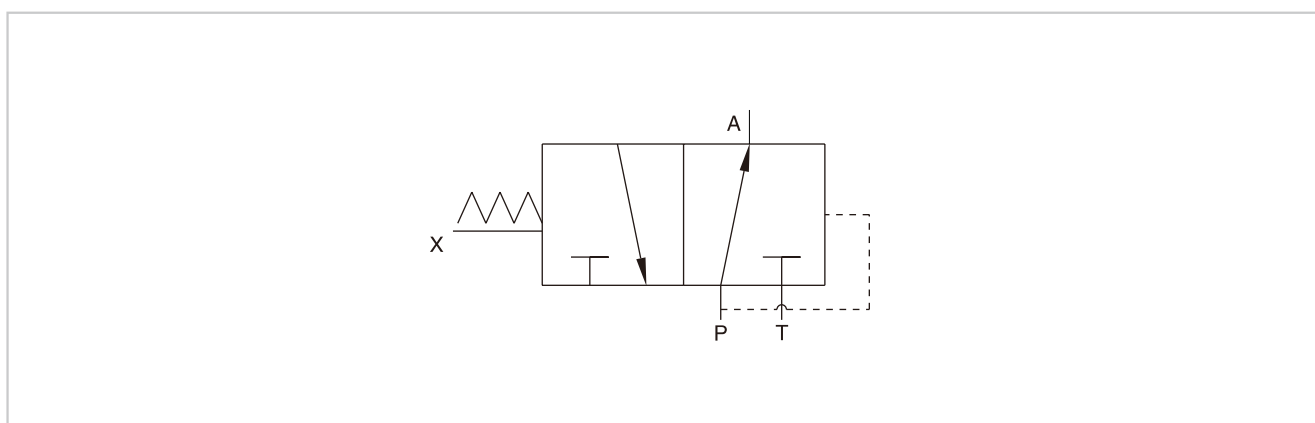
(Please consult with us if your working condition is out of the technical parameter given above.)

Usage: it's used for pressure unloading.
Connect X to oil-return circuit, increase the system pressure, P to A. Connect X to pressure circuit, A to T.

Model description



Code symbol



Hyvyzf Hydro-operated Directional Valve

External dimensions

