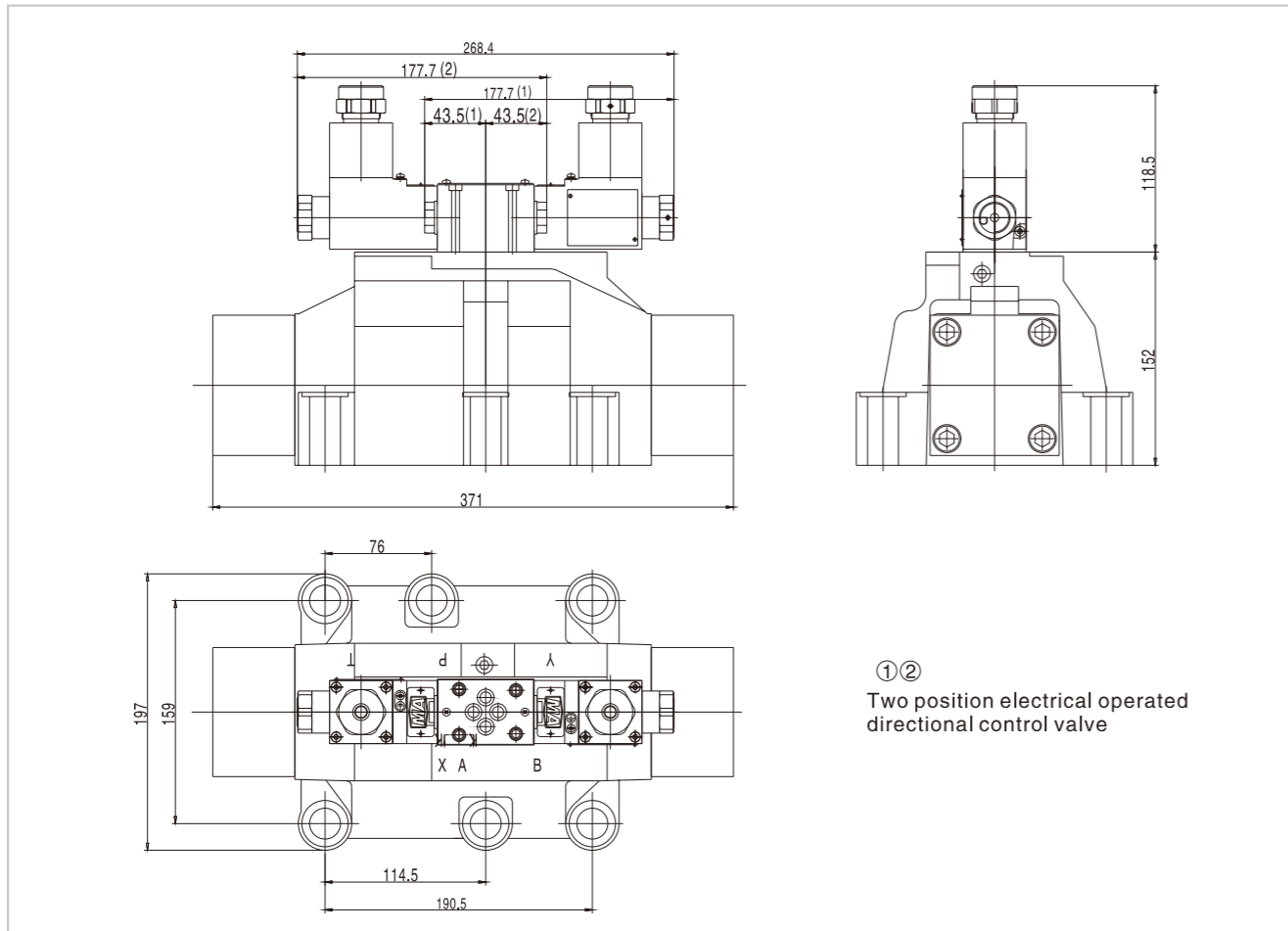
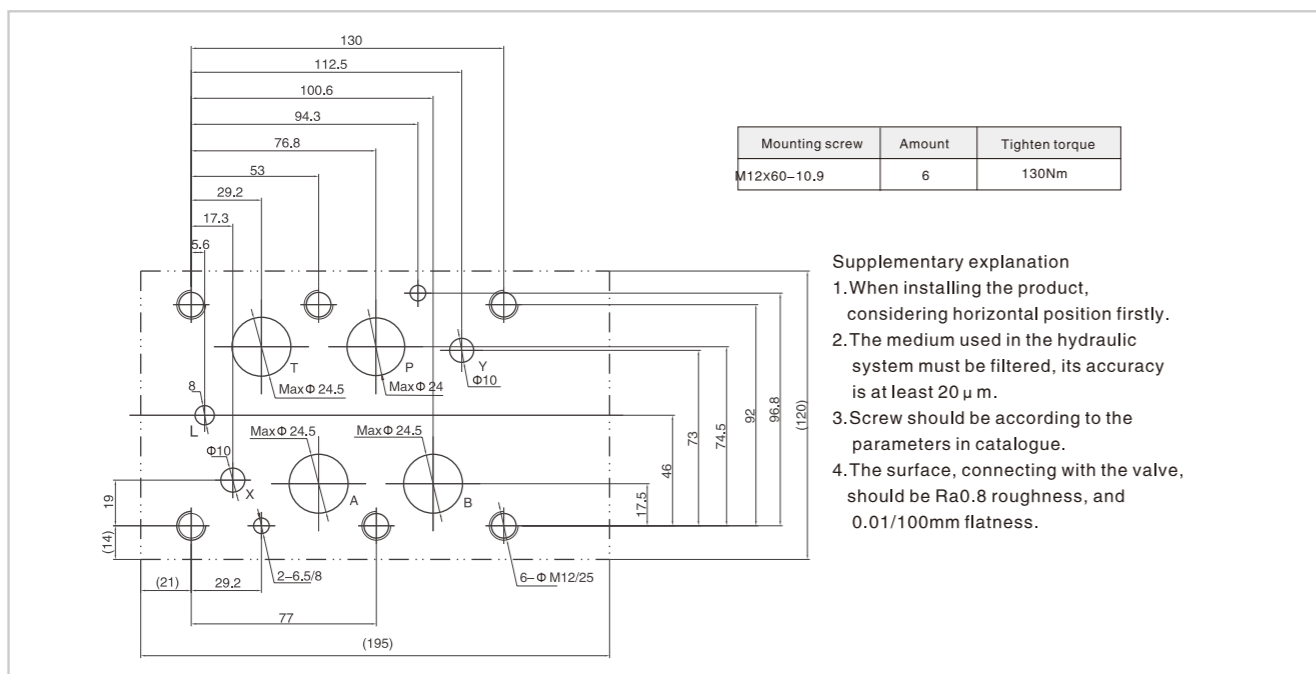


# Explosion Isolation Electro-hydraulic Directional Control Valve

## 10 External dimensions



## 10 Subplate size



# Explosion Isolation Solenoid Relief Valve

## Technical specification



- Working voltage is relative to the explosion-proof type, details please refer to "Product introduction".
- For voltage AC, rectifier is integrated with the solenoid, no need for external rectifying.

Specification	03	06	10		
Max. working pressure (MPa)	Oil ports A, X	35			
	Oil port B	Extrl disch	10		
		intl disch	25		
	Oil port Y	10			
Max. Flow (L/min)	250	500	650		
Working fluid	Mineral oil;phosphate-ester				
Fluid temp. (°C)	-20~70				
Viscosity (mm <sup>2</sup> /s)	15~380				
Working pressure (MPa)	5	10	20	31.5	35
	10	20	31.5	35	
Working voltage <sup>1)</sup> (V)	DC	24			
	AC <sup>2)</sup>	127/50Hz	220/50Hz		
Insulation grade	IP55				
Cleanliness	The maximum allowable cleanliness of the oil should be according to 9th degree of Standard NAS1638. It is suggested that the minimum filter rating should be β 10 ≥ 75.				

## Model instruction

Explosion isolation solenoid relief valve

Omit pilot operated valve  
 C Pilot operated without main cartridge(not marked diameter)  
 C Pilot operated with main cartridge(marked diameter)

Plate connecting type	Pipe connecting type	Screw thread connector
03 DN10	10 DN10	G1/2" or M22x1.5
	15 DN15	G3/4" or M27x2
06 DN20	20 DN20	G1" or M33x2
	25 DN25	G1 1/4" or M42x2
10 DN30	30 DN30	G1 1/2" or M48x2

Omit plate connecting type  
 G Pipe connecting thread-G screw  
 G2 Pipe connecting thread-M screw

Working pressure  
 5 to 5MPa  
 10 to 10MPa  
 20 to 20MPa  
 31.5 to 31.5MPa  
 35 to 35MPa

A N.C. Normally closed  
 B N.O. Normally open

1 Handle  
 2 Setting screw with outside hexagon and boot cap  
 3 Handle with lock

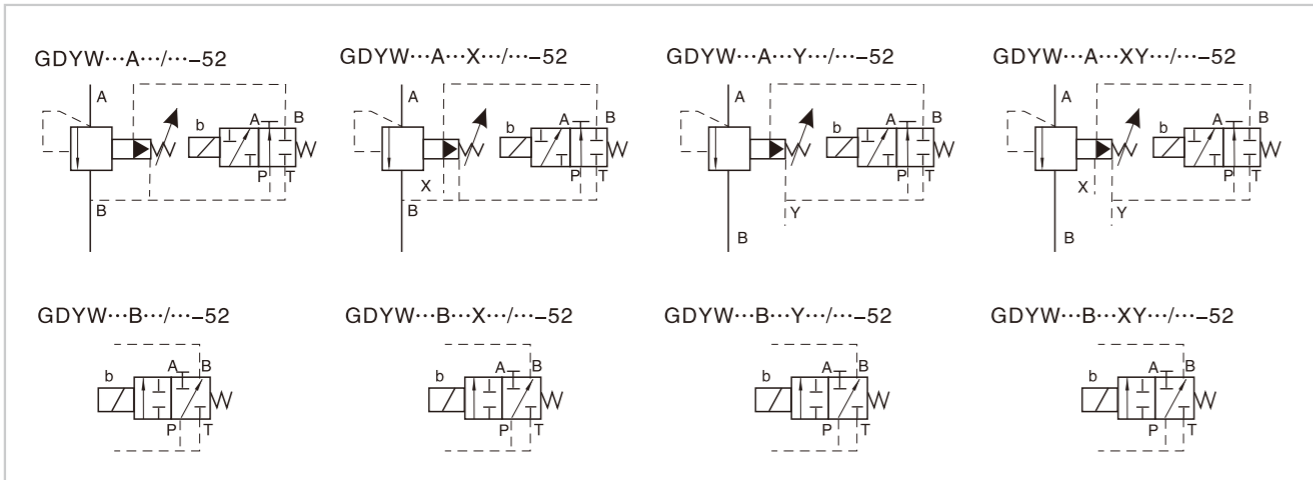
3)damping mounted in chamber B  
 4)Refer to the curves for the U type characteristics

GDYW \*-\* \*-\* \*-\* \* / \* \* \* / \* \* \* 52 \*

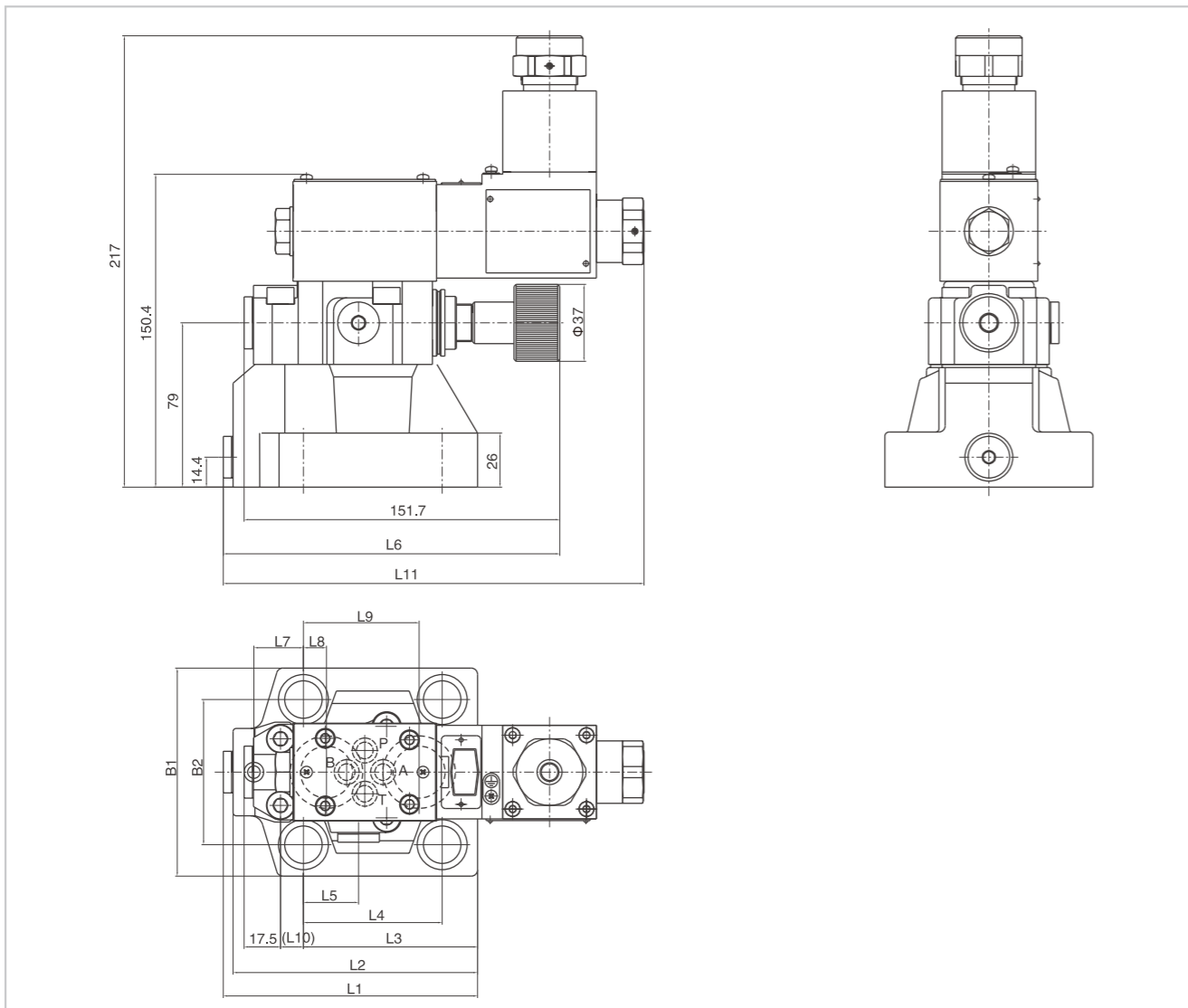
Remarks  
 Serial number  
 Seal material  
 Omit NBR Seals  
 V FPM Seals  
 Pilot operated drainage port thread  
 Omit<sup>1)</sup> G1/4"  
 2 M14X1.5  
 Omit No damping  
 08 Φ0.8 Damping  
 10 Φ1.0 Damping  
 12 Φ1.2 Damping  
 Omit without emergency push rod  
 N9 With emergency push rod  
 Ex d I Mb  
 Ex d II C T6 Gb  
 E Ex d IIIC T80°C Db IP65  
 Working voltage  
 D24 DC24V  
 B127 (AC127V Rectified)  
 B220 (AC220V Rectified)  
 Omit<sup>1)</sup> standard type  
 U The minimum setting pressure is lower type  
 Omit intl cntrl intl disch  
 XY Extrl cntrl extl disch  
 X Extrl cntrl intl disch  
 Y Intl cntrl extl disch

# Explosion-isolation Solenoid Relief Valve

## Code symbol

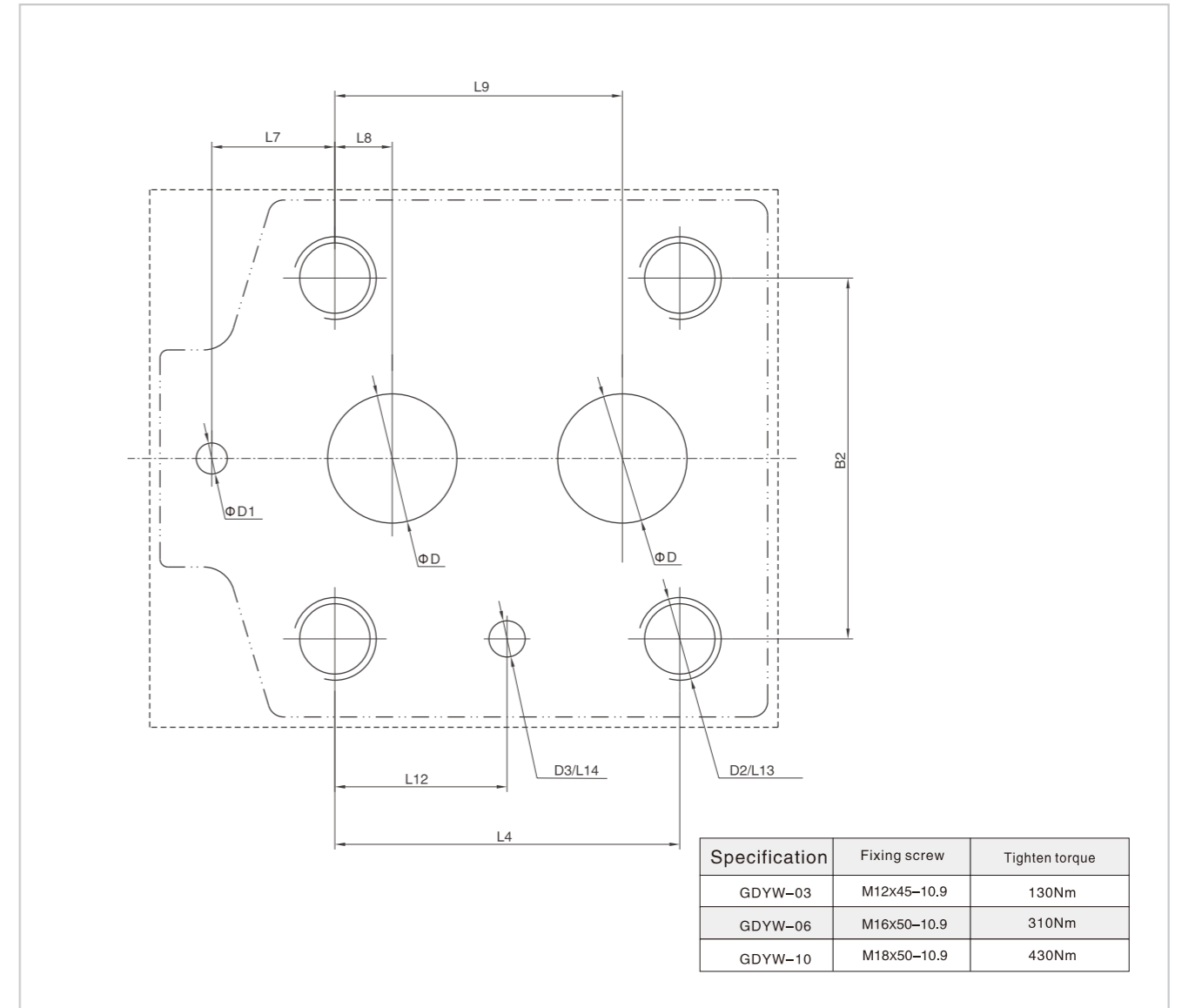


## External dimensions



# Explosion Isolation Solenoid Relief Valve

## Subplate size



Specification	B1	B2	L1	L2	L3	L4	L5	L6	L7	L8
GDYW-03	80	54	98.5	91.5	67	54	23.5	149.3	0	22.1
GDYW-06	100	69.8	122.2	117.5	83.7	66.7	26.5	161.8	23.8	11.1
GDYW-10	115	82.6	154.5	149.5	106.9	88.9	28.1	172.5	31.8	12.7

Specification	L9	L10	L11	L12	L13	L14	D	D1	D2	D3
GDYW-03	47.5	14	207	22.1	20	6	12	6	M12	7
GDYW-06	55.6	11	219.5	33.3	25	6	25	6	M16	7
GDYW-10	76.2	9.4	230.2	44.4	30	6	32	6	M18	7

1. When installing the product, consider horizontal position firstly.
2. The medium used in the hydraulic system must be filtered. its accuracy at least should be 20 μm.
3. Screw should be according to the parameters of catalogue.
4. The surface, connecting with the valve, should be Ra0.8 roughness, and 0.01/100mm flatness.