

Explosion Isolation Proportional Directly Operated Pressure-relief Valve

Technical specification

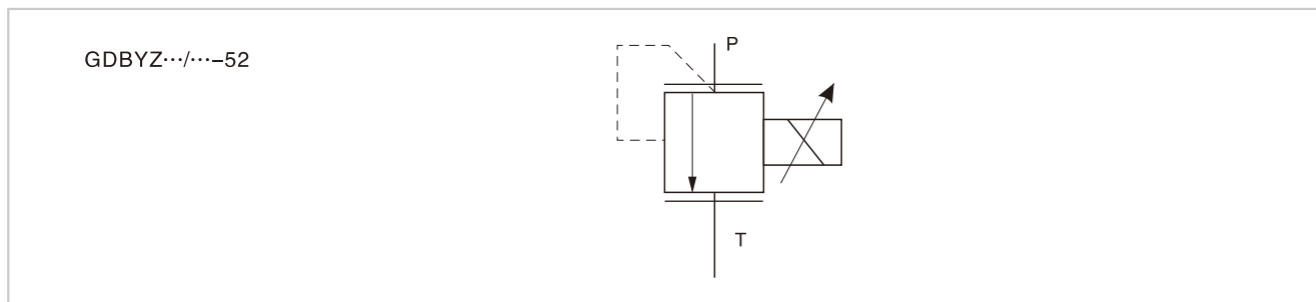


Specification		02
Max. working pressure (MPa)	Oil port P	25
	Oil port T	0 Mpa return to oil tank
Working pressure(MPa)		7 16 25
Max. Flow (L/min)		2
Working fluid		Mineral oil;phosphate-ester
Fluid temp. (°C)		-20~70
Viscosity (mm ² /s)		15~380
Hysteresis (%)		< 2
Repeatability (%)		< 2
Linearity (%)		< 3.5
Working voltage (V)		DC24
Rated current (mA)		750
Coil resistance (Ω)		19.5
Insulation grade		IP55
Cleanliness	The maximum allowable cleanliness of the oil should be according to 9th degree of Standard NAS1638.It is suggested that the minimum filter rating should be β 10≥75.	

Model instruction

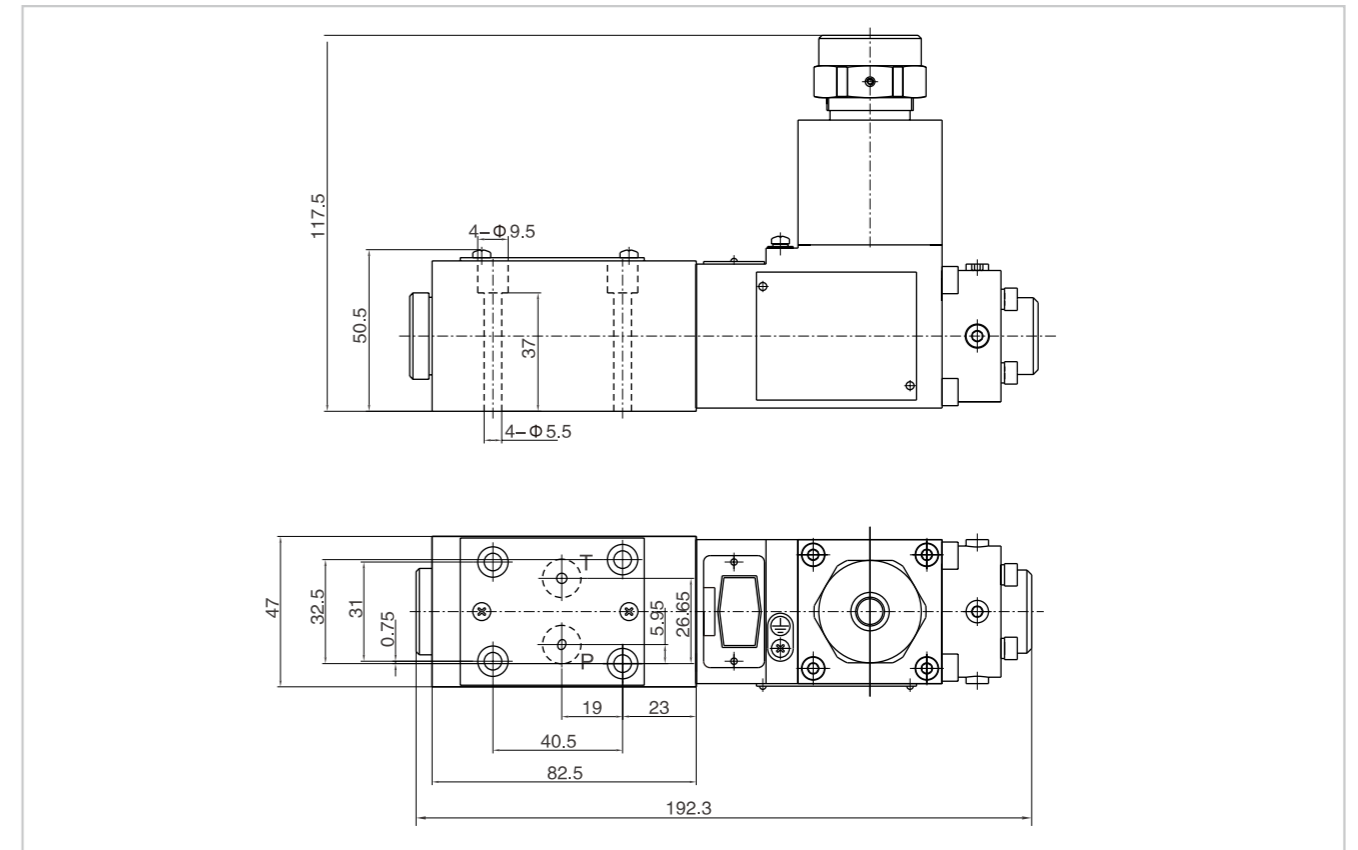
GDBYZ - 02 - * * * / * - 52 *		
Explosion isolation proportional directly operated pressure-relief valve		Remarks
Specification 02 DN06		Serial number
Working pressure 5 to 5MPa 10 to 10MPa 20 to 20MPa 31.5 to 31.5MPa		Seal material Omit NBR Seals V FPM Seals
		Ex d I Mb Ex d II C T6 Gb E Ex d IIIC T80°C Db IP65
		Working voltage D24 DC24V

Code symbol

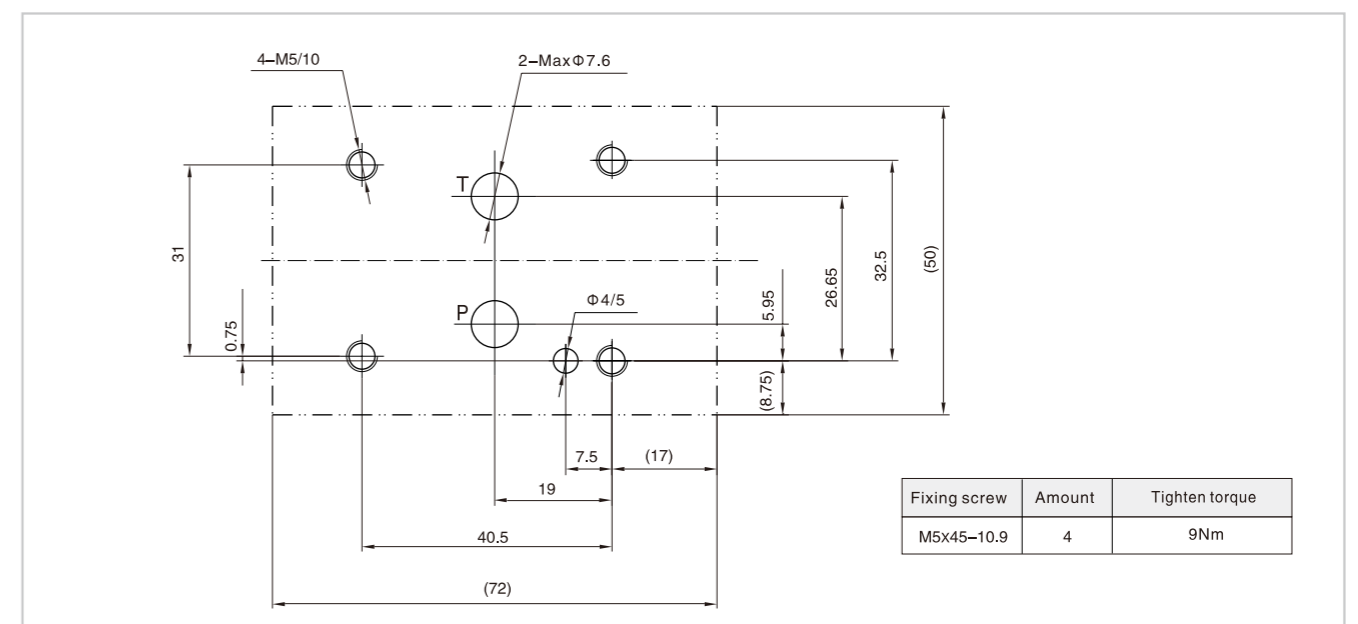


Explosion Isolation Proportional Directly Operated Pressure-relief Valve

02 External dimensions



02 Subplate size



1. When installing the product, consider horizontal position firstly.
2. The medium used in the hydraulic system must be filtered, its accuracy at least should be 20 μm.
3. Screw should be according to the parameters of catalogue.
4. The surface, connecting with the valve, should be Ra0.8 roughness, and 0.01/100mm flatness.