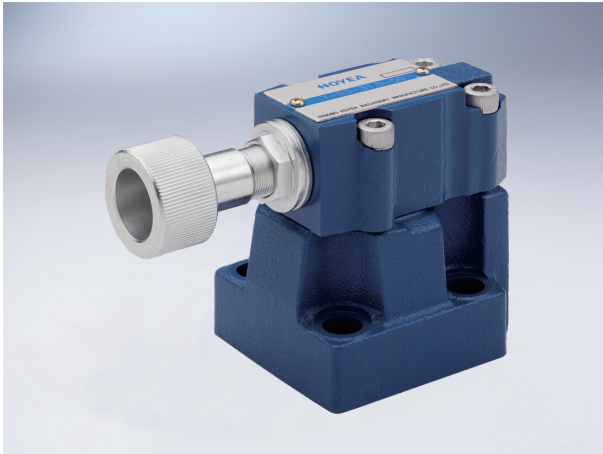


# Sequence Valve

## Technical specification



Specification	03	06	10	
Max. working pressure (MPa)	31.5			
Max. Flow (L/min)	250	500	600	
Working fluid	Mineral oil; phosphate-ester			
Fluid temp. (°C)	-20~70			
Viscosity (mm <sup>2</sup> /s)	12~380			
Working press (MPa)	5	10	20	31.5
Cleanliness	The maximum allowable cleanliness of the oil should be according to 9th degree of Standard NAS1638. It is suggested that the minimum filter rating should be $\beta 10 \geq 75$ .			

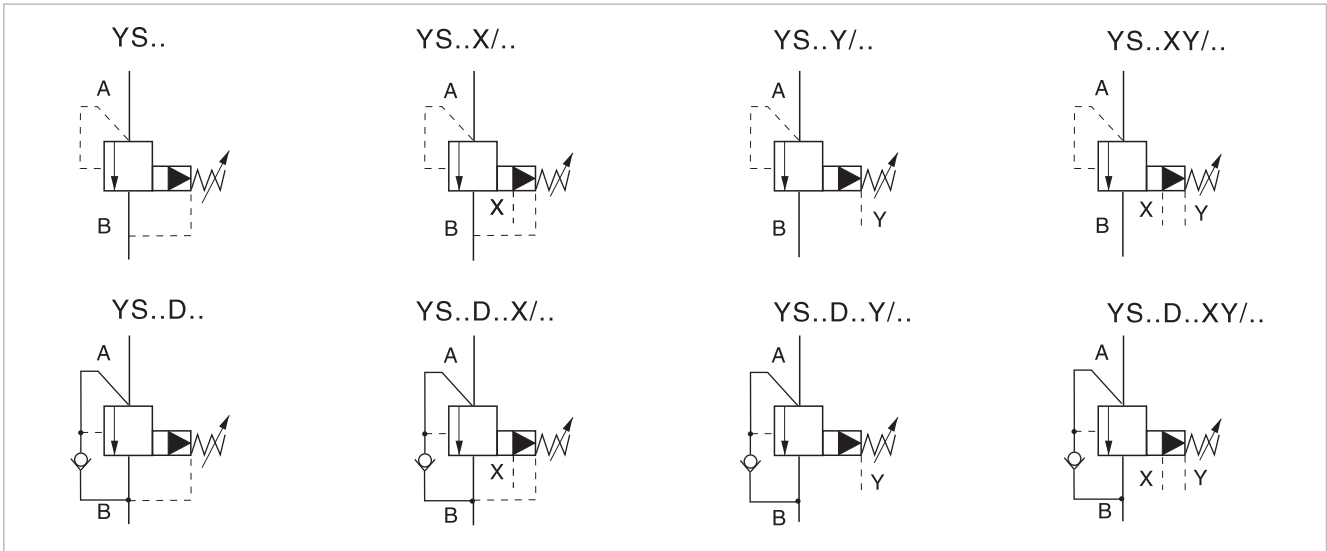
YS pilot-operated sequence valve is used to control action sequence of actuators in hydraulic systems so as to achieve automatic control. By changing the control mode, it can serve as back pressure valve, unload valve, bypass valve and sequence valve. In addition, an internal supply internal discharge or an external supply internal discharge sequence valve can also be used as a balance valve if it includes a check valve.

## Model description

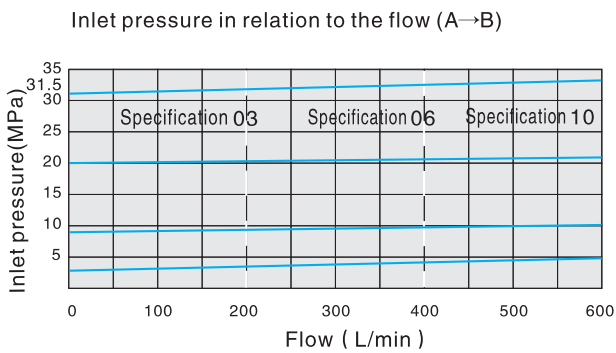
YS * - * - * * - * * / * * 5X *	
Sequence valve	Remarks
Pilot operated valve Omit Pilot operated without main cartridge (not marked diameter) C Pilot operated with main cartridge (marked diameter)	Serial number
Specification 03 DN10 06 DN20 10 DN30	Seal material Omit NBR Seals V FPM Seals
Working press 5 to 5MPa 10 to 10MPa 20 to 20MPa 31.5 to 31.5MPa 35 to 35MPa	Pilot operated drainage port thread Omit G1/4" M M14X1.5
Omit Without check valve D With check valve	Omit Intl cntrl intl disch X Extl cntrl intl disch Y Intl cntrl extl disch XY Extl cntrl extl disch
	1 Rotary knob 2 Sleeve with hexagon and protective cap

## Sequence Valve

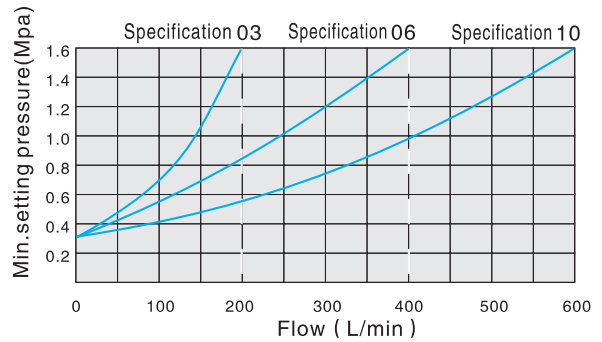
### Code symbol



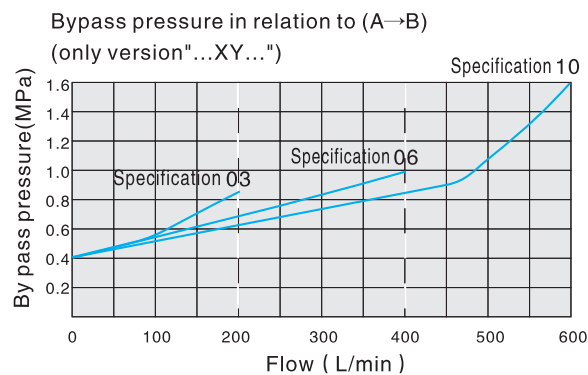
### Performance curve (Measured at: Test under $v=41\text{mm}^2/\text{s}$ and $t=50^\circ\text{C}$ )



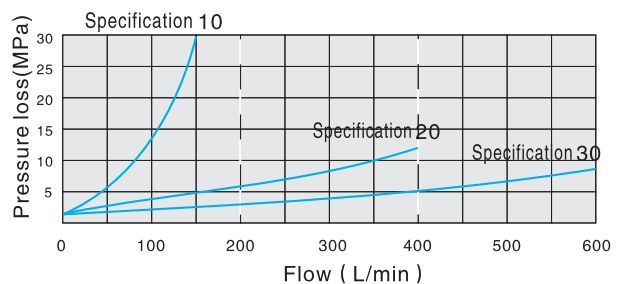
Minimum settable pressure in relation to the flow (A→B) (=bypass pressure version "...X...")



The characteristic curves are valid for the complete flow range



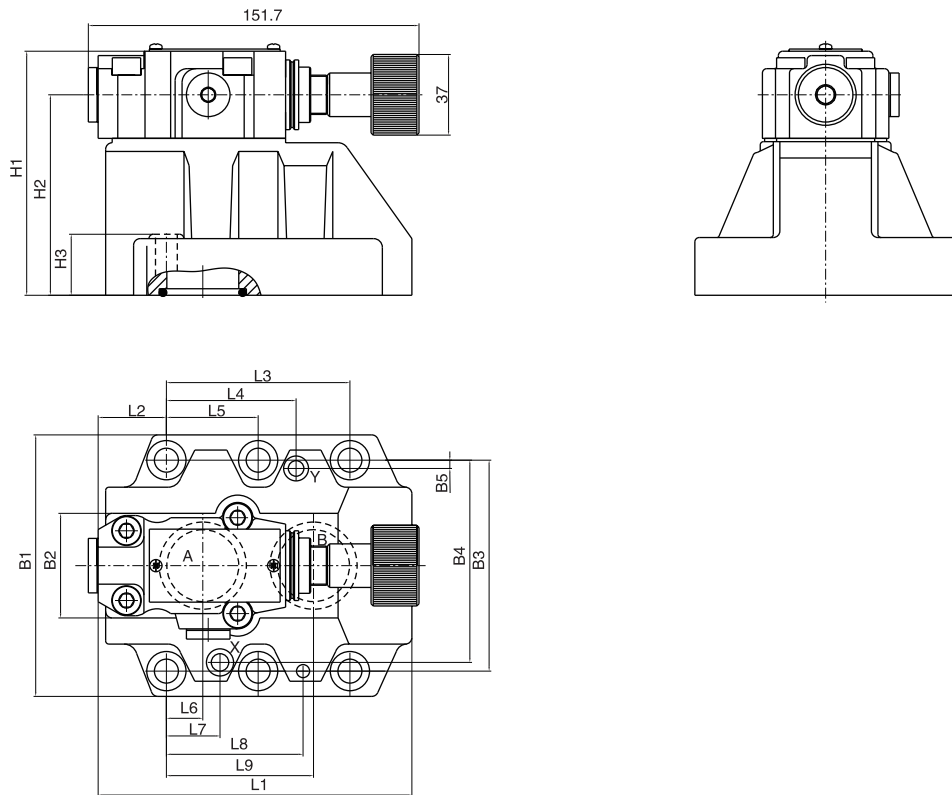
The curve  $\Delta P-Q$  pass through the check valve



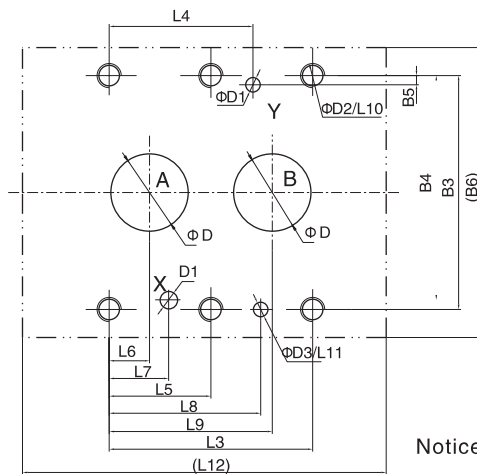
The characteristic curves are valid for outlet pressure  $P_B=0$  for the complete flow range

# Sequence Valve

## External dimensions



## Subplate mounting size



Specification	Mounting screw	Tighten torque
YS-03	4-M10x50-10.9	75Nm
YS-06	4-M10x60-10.9	75Nm
YS-10	6-M10x70-10.9	75Nm

Notice: The surface, connecting with the valve, should be Ra0.8 roughness, and 0.01/100mm flatness.

Model	L1	L2	L3	L4	L5	L6	L7	L8	L9	L10	L11	L12	B1	B2	B3	B4	B5	B6	H1	H2	H3	D	D1	D2	D3
YS-03	96	35.5	42.9	21.5	-	7.2	21.5	31.5	35.8	23	6	98	85	80	66.7	58.8	7.9	87	112	92	28	12	6	M10	7
YS-06	116	37.5	60.3	39.7	-	11.1	20.6	44.5	49.2	24	6	118	102	59.5	79.4	73	6.4	104	122	102	38	25	6	M10	7
YS-10	145	33	84.2	59.5	42.1	16.7	24.6	62.7	67.5	25	6	147	120	76	96.8	92.8	3.8	149	130	110	46	32	6	M10	7