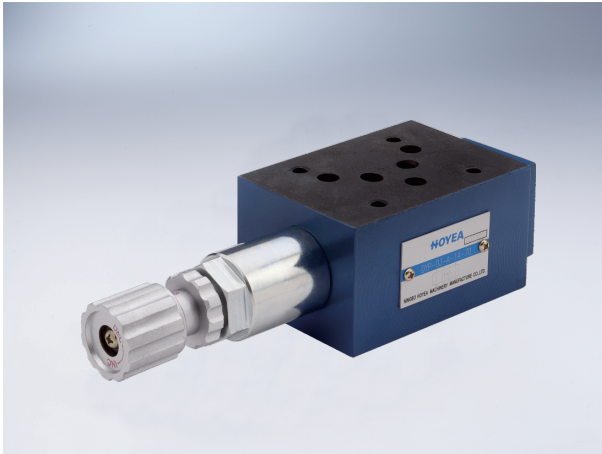


Modular Counter-balance Valve

Technical specification



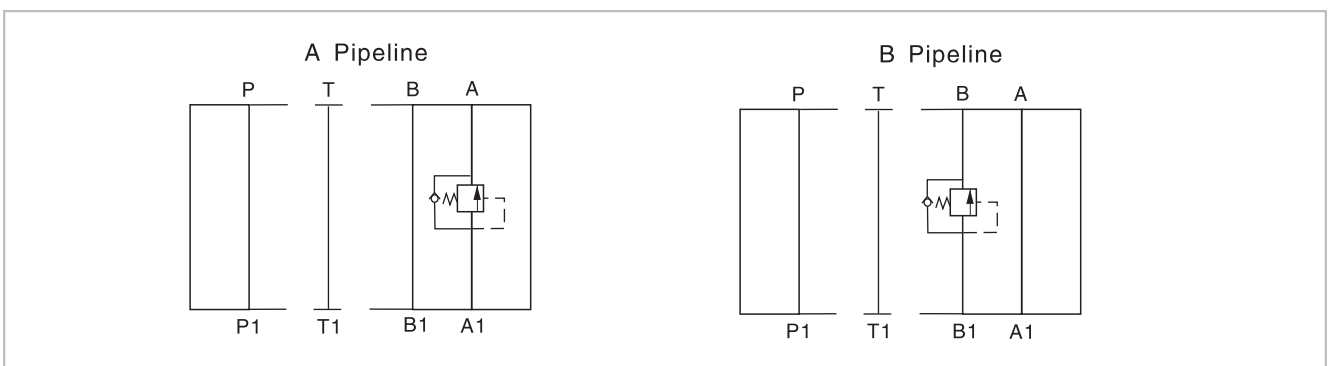
Specification	02	03
Max. working pressure (MPa)	25	
Max. Flow (L/min)	35	70
Working fluid	Mineral oil; phosphate-ester	
Fluid temp. (°C)	-20~70	
Viscosity (mm ² /s)	12~380	
Adjusting pressure (MPa)	7, 14,	21
Cleanliness	The maximum allowable cleanliness of the oil should be according to 9th degree of Standard NAS1638. It is suggested that the minimum filter rating should be $\beta_{10} \geq 75$.	

Model description

DYP - * * - * - * / * 7X *

<p>Modular counter-balance valve</p> <p>Specification 02 DN 6 03 DN 10</p> <p>A A Pipeline relief B B Pipeline relief</p> <p>Adjusting pressure 7 to 7MPa 14 to 14MPa 21 to 21MPa</p>	<p>Remarks</p> <p>Serial number</p> <p>Seal material Omit NBR Seals V FPM Seals</p> <p>8 Handle</p>
---	---

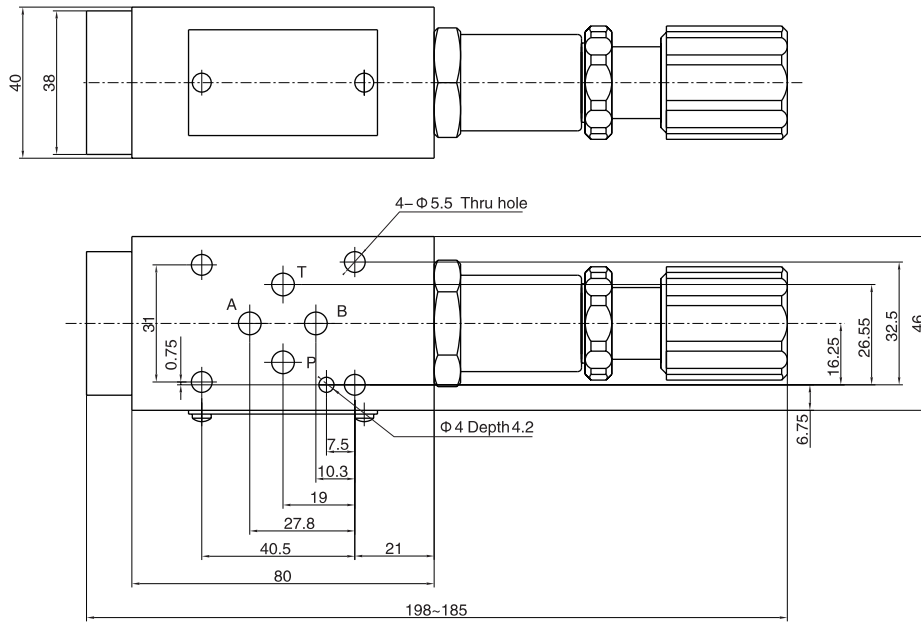
Code symbol



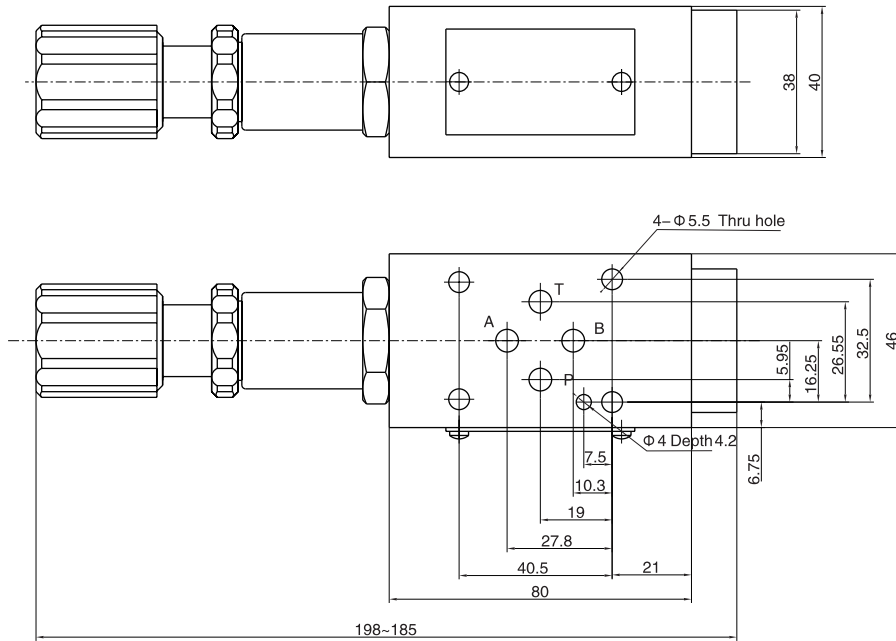
Modular Counter-balance Valve

02 External dimensions

DYP-02-A ...



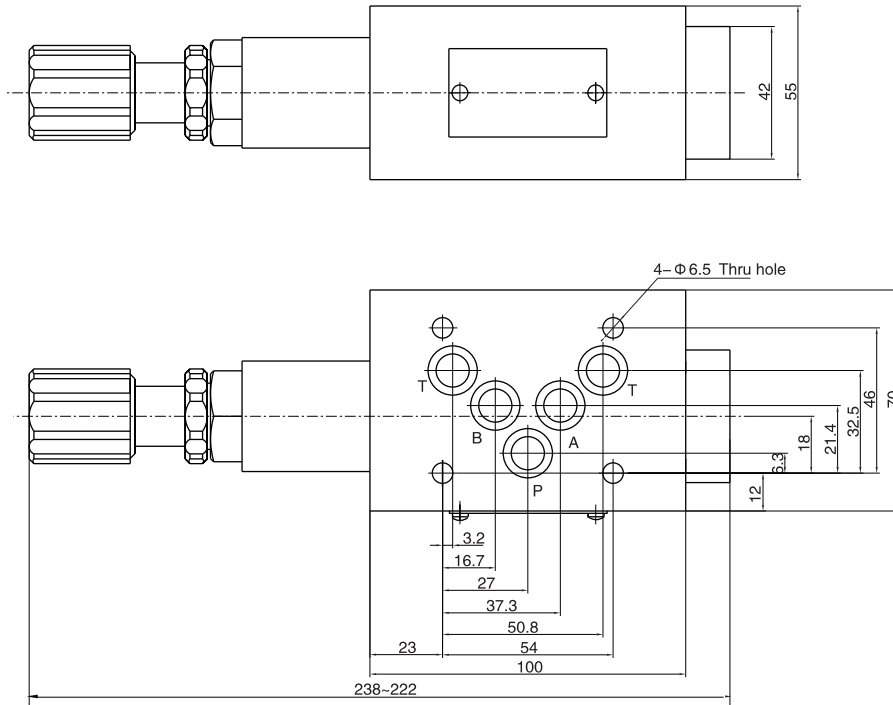
DYP-02-B ...



Modular Counter-balance Valve

03 External dimensions

DYP-03-A ...



DYP-03-B ...

