

2-way Cartridge Valve (Direction Function)

Technical data

技术参数 technical specification



Size	16	25	32	40	50	63
Max working pressure (Mpa)	31.5					
Max flow rate (L/min)	160	460	800	1200	1800	2700
Working fluid	Mineral hydraulic oil; phosphate ester hydraulic oil					
Fluid temp (°C)	-20~70					
Fluid viscosity (mm ² /s)	-2.8~500					
Cleanliness	NAS1638 Class 9, recommended filtration precision Min β ≥75.					

HYLC is a high-flow rate and high-pressure logic valve mainly to control the oil on/off, shall work together with the coverplate.

Model description

HYLC - * - * - * - * - * / 5X *

2-way cartridge valve (direction function)

Specification
 16 DN16
 25 DN25
 32 DN32
 40 DN40
 50 DN50
 63 DN63

50 series
 A area ratio 2:1 (annular area=50%)
 B area ratio 14.3:1 (annular area=7%)
 90series
 area ratio 3:1 (annular area=33%)

Remark

Serial number
50

51

Seal material
omit NBR
V FPM

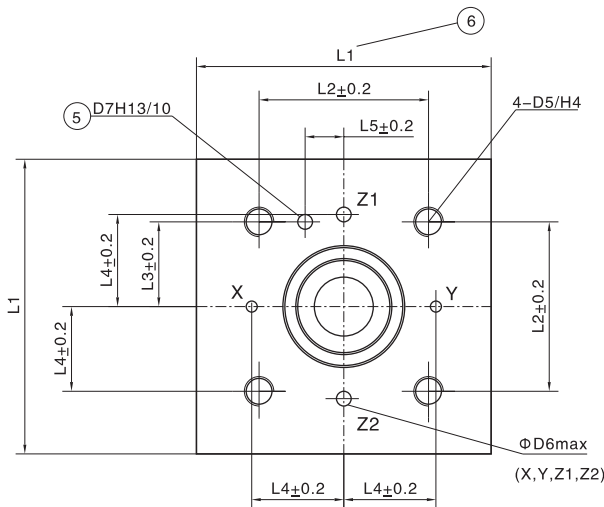
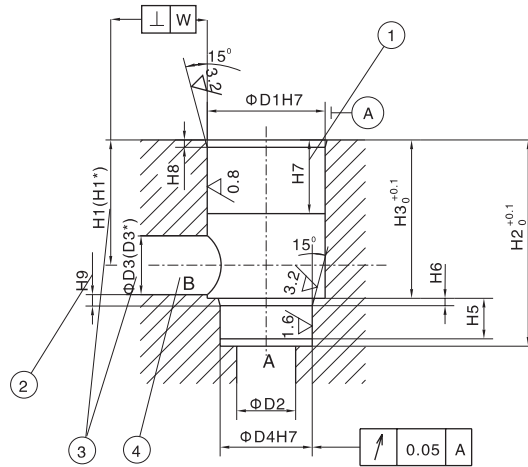
E Valve poppet without damping nose
D Valve poppet with damping nose

00 Cracking pressure 0 bar (without spring)
 05 Cracking pressure approx. 0.05Mpa
 10 Cracking pressure approx. 0.1Mpa
 20 Cracking pressure approx. 0.2Mpa
 40 Cracking pressure approx. 0.4Mpa

E.2.1

2-way Cartridge Valve (Direction Function)

Dimension



1. depth of fit
2. Reference size
3. Due to the use of a bore with $\phi D3^*$, port B protrudes over the upper limit of the area intended in ISO 7368. This is, however, possible due to the sealing concept and reduces the pressure loss during flow through the valve. Thus, we recommend a bore with $\phi D3$
4. Port B can be positioned around the central axis of port A. However, it must be observed that the mounting bores and the control bores are not damaged
5. Bore for locating pin
6. 80 mm only with control cover for directional valve set-up NG16 (axis X-Y bores)

规格	ΦD1H7	ΦD2H7	ΦD3H7	(ΦD3*)	ΦD4	ΦD5	ΦD6H7	ΦD7	H1	(H1*)	H2	H3
16	32	16	16	25	25	M8	4	4	34	29.5	56	43
25	45	25	25	32	34	M12	6	6	44	40.5	72	58
32	60	32	32	40	45	M16	8	6	52	48	85	70
40	75	40	40	50	55	M20	10	6	64	59	105	87
50	90	50	50	63	68	M20	10	8	72	65.5	122	100
63	120	63	63	80	90	M30	12	8	95	86.5	155	130

规格	H4	H5	H6	H7	H8	H9	L1	L2	L3	L4	L5	W
16	20	11	2	20	2	0.5	65/80	46	23	25	10.5	0.05
25	25	12	2.5	30	2.5	1	85	58	29	33	16	0.05
32	35	13	2.5	30	2.5	1.5	102	70	35	41	17	0.1
40	45	15	3	30	3	2.5	125	85	42.5	50	23	0.1
50	45	17	3	35	4	2.5	140	100	50	58	30	0.1
63	65	20	4	40	4	3	180	125	62.5	75	38	0.2

E.2.2