

## Coverplate(Direction Function)

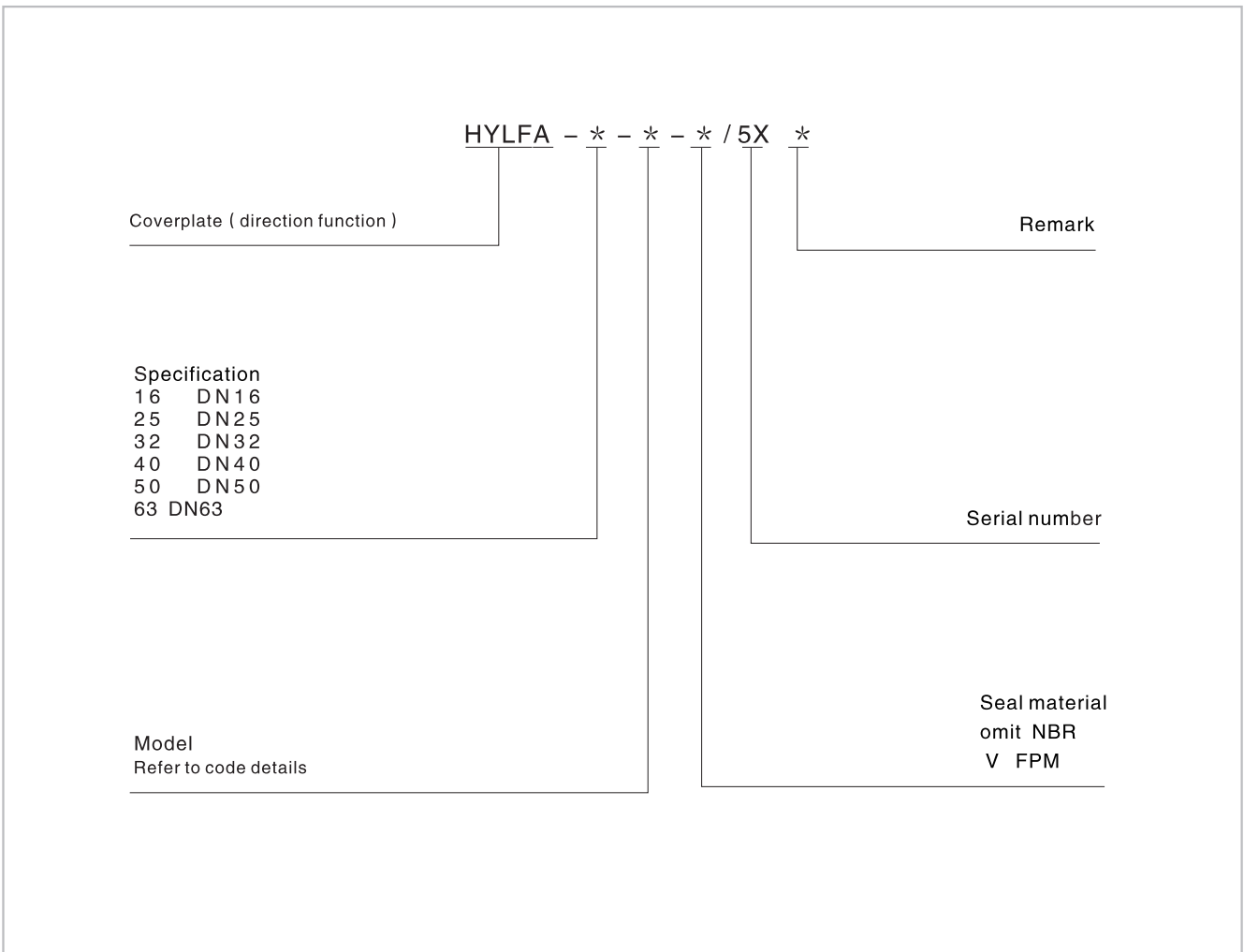
### Technical data



Size	16	25	32	40	50	63
Max working pressure (MPa)	31.5					
	Mineral hydraulic oil; phosphate ester hydraulic oil					
Working fluid(°C)	-20~70					
Fluid temp (mm²/s)	-2.8~500					
Cleanliness	NAS1638 Class 9, recommended filtration precision Min β ≥75.					

HYLFA is control the logic valve on/off. Different coverplates can realize diverse flow rates and direction of the hydraulic fluid.

### Model description

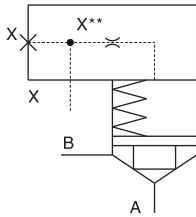


# Control Cover Type Hylfa

## Model description

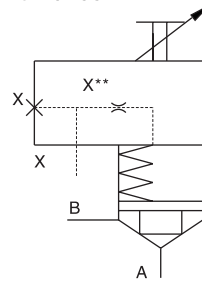
### LFA...D.../F

Control cover with remote control port  
Size: 16~63



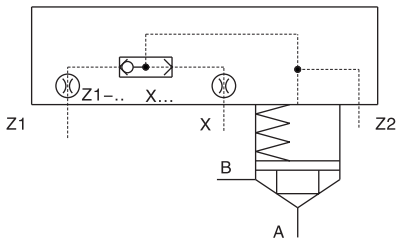
### LFA...H2.../F

Control cover with stroke limitation and remote control port  
Size: 16~63



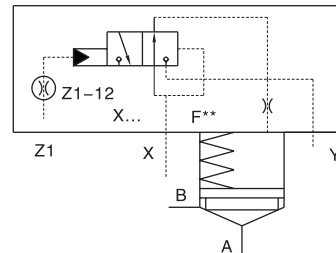
### LFA...G.../...

Control cover with integrated shuttle valve  
Size: 16~63



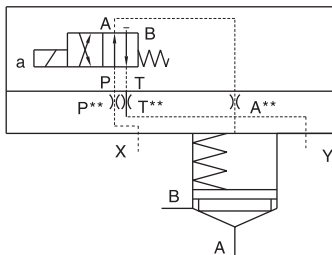
### LFA...R.../...

Control cover with integrated pilot operated pilot control valve (directional seat valve)  
Size: 16~63



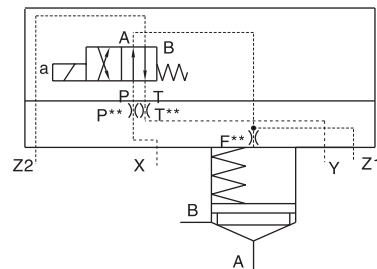
### LFA...WEA.../...

Control cover for set-up of a directional valve  
Size: 16~63



### LFA...WEA8-60/...

Control cover for set-up of a directional valve; additional control port  
Size: 16~63

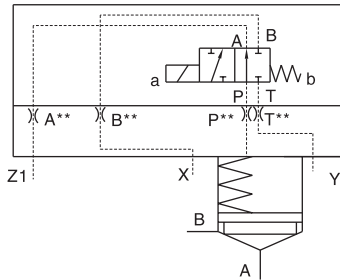


# Control Cover Type Hylfa

## Model description

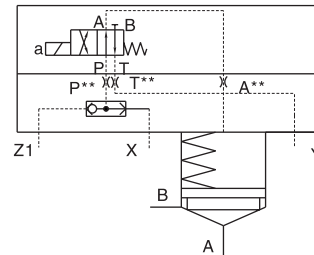
### LFA...WEA9-60/...

Control cover for set-up of a directional spool valve as check valve circuit  
Size:16-63



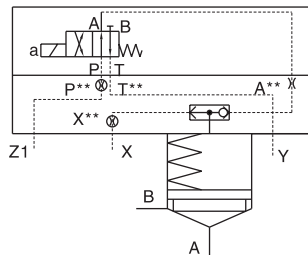
### LFA...GWA.../...

Control cover for set-up of a directional spool valve or seat valve, with integrated shuttle valve  
Size:16-63



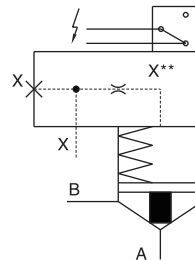
### LFA...KWA.../...

Control cover with shuttle valve and for set-up of a directional valve (check valve circuit)  
Size:16-63



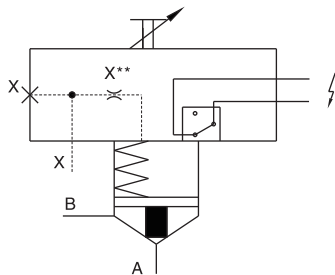
### LFA...E60/...DQ.G24F

Control cover with electric close position monitoring, incl. installation kit  
Size:16-63



### LFA...EH2-60/...DQ.G24F

Control cover with electric close position and stroke limitation monitoring, incl. installation kit  
Size:16-63



### LFA...EWA60/...DQOG24

Control cover with electric monitoring of the close position, for mounting a directional spool valve  
Size:16-63

